

United Nations Economic Commission for Europe/  
Food and Agriculture Organization of the United  
Nations

**UNECE**



Timber Branch, Geneva, Switzerland

*Country Tables*

*Eastern Europe*

*from the*

**EUROPEAN FOREST SECTOR OUTLOOK STUDY**



**UNITED NATIONS**  
Geneva, 2005

Important forest sector parameters - historical trends and forecasts:

Albania

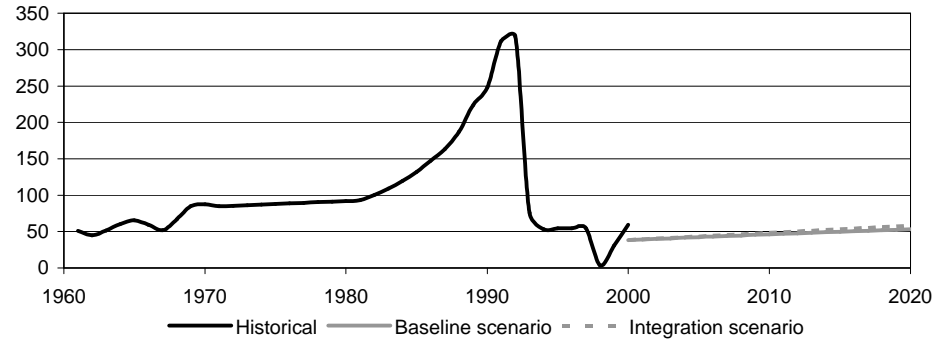
Parameter	Units (millions)	Historical statistics					Annual change (in %)	Baseline scenario			Annual change (in %)	Conservation scenario			Annual change (in %)	Integration scenario			Annual change (in %)
		Year						Year				Year				Year			
		1961	1970	1980	1990	2000		2000	2010	2020		2000	2010	2020		2000	2010	2020	
<b>Forest resources</b>																			
Forest area	ha	0.98	0.95	0.93	0.91	0.90	-0.2	0.90	0.87	0.85	-0.3	n.a.	n.a.	n.a.	n.a.	0.90	0.88	0.86	-0.2
Growing stock	m <sup>3</sup> o.b.	88.13	84.47	80.41	73.00	74.00	-0.4	77.88	91.59	99.67	+1.2	n.a.	n.a.	n.a.	n.a.	77.88	91.20	98.53	+1.2
Increment	m <sup>3</sup> o.b.	3.58	3.32	3.03	1.00	0.90	-3.5	1.77	1.49	1.45	-1.0	n.a.	n.a.	n.a.	n.a.	1.77	1.50	1.48	-0.9
Fellings	m <sup>3</sup> o.b.	1.84	2.90	2.79	2.48	0.53	-3.1	0.68	0.69	0.77	+0.6	0.68	0.65	0.66	-0.1	0.68	0.72	0.86	+1.2
<b>Product production</b>																			
Roundwood	m <sup>3</sup> u.b.	1.54	2.43	2.33	2.08	0.45	-3.1	0.57	0.58	0.64	+0.6	0.57	0.54	0.55	-0.1	0.57	0.60	0.72	+1.2
Sawnwood	m <sup>3</sup>	0.17	0.20	0.20	0.38	0.09	-1.6	0.04	0.05	0.07	+3.6	0.04	0.04	0.05	+1.6	0.04	0.06	0.09	+4.6
Wood based panels	m <sup>3</sup>	0.01	0.01	0.01	0.02	0.04	+3.2	0.00	0.01	0.02	+9.4	0.00	0.00	0.01	+4.3	0.00	0.01	0.03	+11.8
Wood pulp used for paper production	MT	0.00	0.00	0.00	0.00	0.00	n.a.	0.00	0.00	0.00	n.a.	0.00	0.00	0.00	n.a.	0.00	0.00	0.00	n.a.
Paper and paperboard	MT	0.00	0.01	0.01	0.04	0.00	n.a.	0.04	0.07	0.13	+5.6	0.04	0.05	0.07	+2.5	0.04	0.09	0.17	+7.2
Recovered paper	MT	0.00	0.00	0.00	0.00	0.00	n.a.	0.00	0.00	0.00	n.a.	0.00	0.00	0.00	n.a.	0.00	0.00	0.00	n.a.
<b>Product consumption</b>																			
Roundwood	m <sup>3</sup> u.b.	1.54	2.43	2.33	2.08	0.45	-3.1	0.57	0.57	0.64	+0.6	0.57	0.54	0.55	-0.2	0.57	0.60	0.71	+1.1
Sawnwood	m <sup>3</sup>	0.17	0.20	0.20	0.38	0.10	-1.4	0.02	0.03	0.05	+4.3	0.02	0.02	0.03	+2.0	0.02	0.04	0.06	+5.4
Wood based panels	m <sup>3</sup>	0.01	0.01	0.01	0.02	0.05	+4.9	0.05	0.13	0.29	+8.9	0.05	0.07	0.12	+4.0	0.05	0.20	0.44	+11.2
Wood pulp used for paper production	MT	0.00	0.01	0.01	0.02	0.00	n.a.	0.02	0.03	0.06	+5.9	0.02	0.02	0.03	+2.6	0.02	0.04	0.08	+7.5
Paper and paperboard	MT	0.01	0.01	0.01	0.05	0.02	+3.1	0.06	0.10	0.18	+5.7	0.06	0.07	0.10	+2.5	0.06	0.12	0.24	+7.3
Recovered paper	MT	0.00	0.00	0.00	0.00	0.00	n.a.	0.00	0.00	0.00	n.a.	0.00	0.00	0.00	n.a.	0.00	0.00	0.00	n.a.
<b>Derived demand for wood raw materials</b>																			
Other industrial roundwood	m <sup>3</sup> WRME	0.00	0.00	0.00	0.00	0.00	n.a.	0.00	0.00	0.00	n.a.	0.00	0.00	0.00	n.a.	0.00	0.00	0.00	n.a.
Sawnwood, plywood and veneer sheets	m <sup>3</sup> WRME	0.36	0.43	0.43	0.81	0.29	-0.6	0.08	0.12	0.19	+4.6	0.08	0.09	0.12	+2.0	0.08	0.15	0.25	+5.9
Reconstituted panels	m <sup>3</sup> WRME	0.00	0.00	0.00	0.00	0.00	n.a.	0.00	0.00	0.00	n.a.	0.00	0.00	0.00	n.a.	0.00	0.00	0.00	n.a.
Net pulp exports	m <sup>3</sup> WRME	0.00	0.00	0.00	0.00	0.00	n.a.	0.00	0.00	0.00	n.a.	0.00	0.00	0.00	n.a.	0.00	0.00	0.00	n.a.
Paper and paperboard	m <sup>3</sup> WRME	0.00	0.03	0.03	0.15	0.01	n.a.	0.15	0.25	0.47	+5.9	0.15	0.17	0.25	+2.6	0.15	0.31	0.63	+7.5
<b>Total</b>	<b>m<sup>3</sup> WRME</b>	<b>0.36</b>	<b>0.46</b>	<b>0.46</b>	<b>0.96</b>	<b>0.30</b>	<b>-0.5</b>	<b>0.23</b>	<b>0.37</b>	<b>0.66</b>	<b>+5.4</b>	<b>0.23</b>	<b>0.26</b>	<b>0.37</b>	<b>+2.4</b>	<b>0.23</b>	<b>0.45</b>	<b>0.88</b>	<b>+7.0</b>
<b>Consumption of wood raw materials</b>																			
Industrial roundwood	m <sup>3</sup> WRME	0.49	0.75	0.72	0.52	0.12	-3.5	0.07	0.11	0.21	+5.6	0.07	0.08	0.11	+2.5	0.07	0.14	0.28	+7.1
Recovered paper	m <sup>3</sup> WRME	0.00	0.00	0.00	0.00	0.00	n.a.	0.00	0.00	0.00	n.a.	0.00	0.00	0.00	n.a.	0.00	0.00	0.00	n.a.
Net pulp imports	m <sup>3</sup> WRME	0.00	0.00	0.00	0.00	0.02	n.a.	0.09	0.14	0.27	+5.9	0.09	0.10	0.15	+2.6	0.09	0.18	0.37	+7.5
Other	m <sup>3</sup> WRME	-0.13	-0.29	-0.26	0.44	0.16	-200.5	0.07	0.11	0.18	+4.7	0.07	0.08	0.11	+2.0	0.07	0.13	0.23	+6.1
<b>Total</b>	<b>m<sup>3</sup> WRME</b>	<b>0.36</b>	<b>0.46</b>	<b>0.46</b>	<b>0.96</b>	<b>0.30</b>	<b>-0.5</b>	<b>0.23</b>	<b>0.37</b>	<b>0.66</b>	<b>+5.4</b>	<b>0.23</b>	<b>0.26</b>	<b>0.37</b>	<b>+2.4</b>	<b>0.23</b>	<b>0.45</b>	<b>0.88</b>	<b>+7.0</b>

Please read the introduction for information about data sources, definitions and measurement units

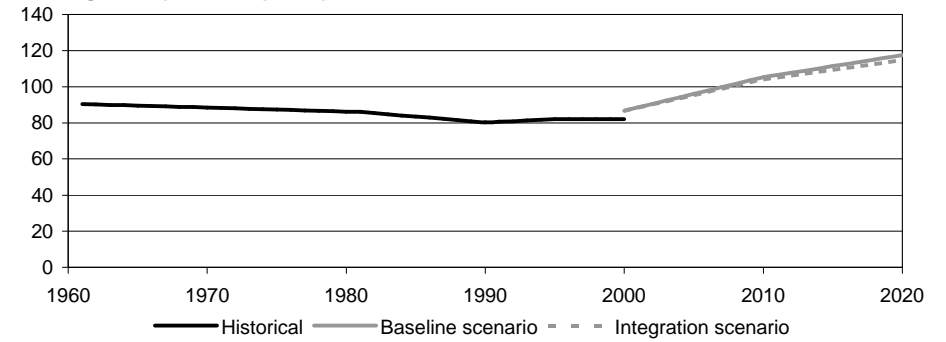
Important forest sector parameters - historical trends and forecasts:

Albania

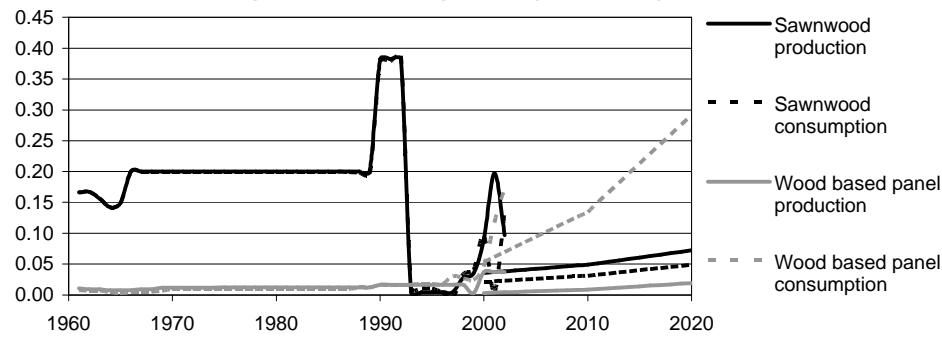
Ratio of fellings to increment (in percent)



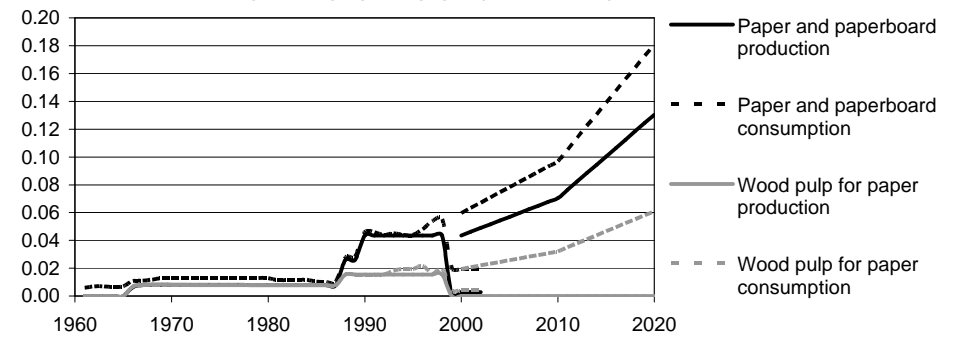
Growing stock (in m<sup>3</sup> o.b. per ha)



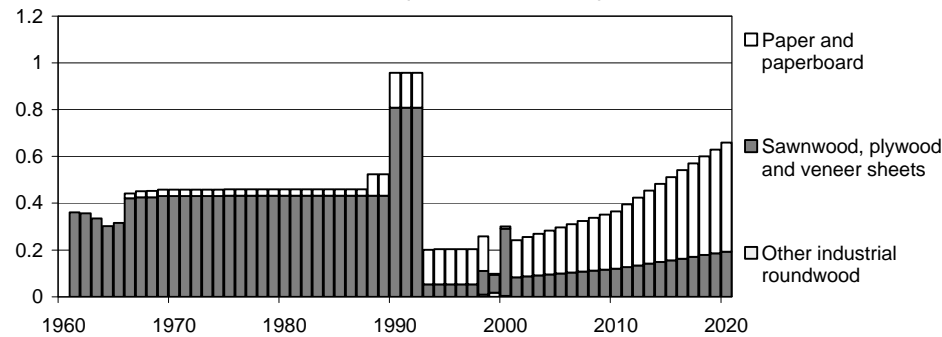
Production and consumption of solid wood products (in million m<sup>3</sup>)



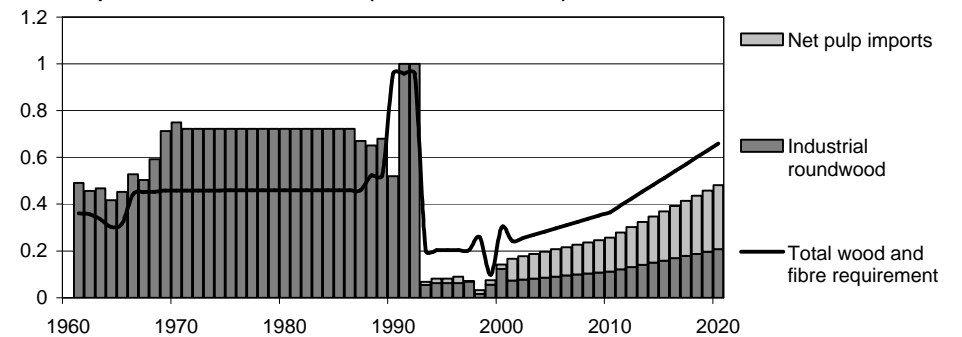
Production and consumption of pulp and paper (in million MT)



Derived demand for wood raw materials (in million m<sup>3</sup> WRME)



Consumption of wood raw materials (in million m<sup>3</sup> WRME)



Please read the introduction for information about data sources, definitions and measurement units

Important forest sector parameters - historical trends and forecasts:

Bosnia and Herzegovina

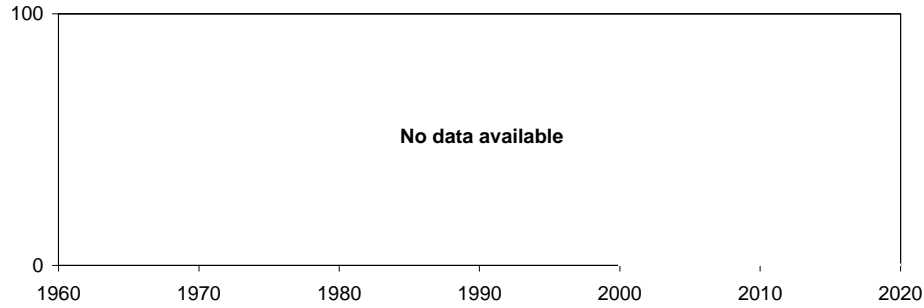
Parameter	Units (millions)	Historical statistics					Annual change (in %)	Baseline scenario			Annual change (in %)	Conservation scenario			Annual change (in %)	Integration scenario			Annual change (in %)
		Year						Year				Year				Year			
		1961	1970	1980	1990	2000		2000	2010	2020		2000	2010	2020		2000	2010	2020	
<b>Forest resources</b>																			
Forest area	ha	n.a.	n.a.	n.a.	n.a.	0.00	n.a.	0.00	0.00	0.00	n.a.	n.a.	n.a.	n.a.	n.a.	0.00	0.00	0.00	n.a.
Growing stock	m <sup>3</sup> o.b.	n.a.	n.a.	n.a.	n.a.	0.00	n.a.	0.00	0.00	0.00	n.a.	n.a.	n.a.	n.a.	n.a.	0.00	0.00	0.00	n.a.
Increment	m <sup>3</sup> o.b.	n.a.	n.a.	n.a.	n.a.	0.00	n.a.	0.00	0.00	0.00	n.a.	n.a.	n.a.	n.a.	n.a.	0.00	0.00	0.00	n.a.
Fellings	m <sup>3</sup> o.b.	n.a.	n.a.	n.a.	n.a.	0.00	n.a.	5.35	6.12	6.91	+1.3	5.35	5.63	5.84	+0.4	5.35	7.24	8.92	+2.6
<b>Product production</b>																			
Roundwood	m <sup>3</sup> u.b.	n.a.	n.a.	n.a.	n.a.	4.28	n.a.	4.28	4.90	5.53	+1.3	4.28	4.51	4.67	+0.4	4.28	5.79	7.14	+2.6
Sawnwood	m <sup>3</sup>	n.a.	n.a.	n.a.	n.a.	0.32	n.a.	0.32	0.38	0.45	+1.7	0.38	0.41	0.45	+0.8	0.41	0.53	0.65	+2.3
Wood based panels	m <sup>3</sup>	n.a.	n.a.	n.a.	n.a.	0.03	n.a.	0.03	0.06	0.08	+4.4	0.06	0.08	0.10	+2.3	0.08	0.18	0.26	+6.0
Wood pulp used for paper production	MT	n.a.	n.a.	n.a.	n.a.	0.00	n.a.	0.00	0.00	0.00	n.a.	0.00	0.00	0.00	n.a.	0.00	0.00	0.00	n.a.
Paper and paperboard	MT	n.a.	n.a.	n.a.	n.a.	0.00	n.a.	0.00	0.00	0.00	n.a.	0.00	0.00	0.00	n.a.	0.00	0.00	0.00	n.a.
Recovered paper	MT	n.a.	n.a.	n.a.	n.a.	0.00	n.a.	0.00	0.00	0.00	n.a.	0.00	0.00	0.00	n.a.	0.00	0.00	0.00	n.a.
<b>Product consumption</b>																			
Roundwood	m <sup>3</sup> u.b.	n.a.	n.a.	n.a.	n.a.	4.28	n.a.	4.06	4.61	5.19	+1.2	4.89	5.19	5.42	+0.5	5.47	7.60	9.51	+2.8
Sawnwood	m <sup>3</sup>	n.a.	n.a.	n.a.	n.a.	0.11	n.a.	0.28	0.32	0.36	+1.4	0.32	0.34	0.36	+0.7	0.34	0.42	0.49	+1.9
Wood based panels	m <sup>3</sup>	n.a.	n.a.	n.a.	n.a.	0.05	n.a.	0.00	0.00	0.00	n.a.	0.00	0.00	0.00	n.a.	0.00	0.00	0.00	n.a.
Wood pulp used for paper production	MT	n.a.	n.a.	n.a.	n.a.	0.00	n.a.	0.00	0.00	0.00	n.a.	0.00	0.00	0.00	n.a.	0.00	0.00	0.00	n.a.
Paper and paperboard	MT	n.a.	n.a.	n.a.	n.a.	0.01	n.a.	0.00	0.00	0.00	n.a.	0.00	0.00	0.00	n.a.	0.00	0.00	0.00	n.a.
Recovered paper	MT	n.a.	n.a.	n.a.	n.a.	0.00	n.a.	0.00	0.00	0.00	n.a.	0.00	0.00	0.00	n.a.	0.00	0.00	0.00	n.a.
<b>Derived demand for wood raw materials</b>																			
Other industrial roundwood	m <sup>3</sup> WRME	n.a.	n.a.	n.a.	n.a.	0.46	n.a.	0.22	0.10	0.03	-9.5	0.22	0.10	0.03	-9.5	0.22	0.10	0.03	-9.5
Sawnwood, plywood and veneer sheets	m <sup>3</sup> WRME	n.a.	n.a.	n.a.	n.a.	0.65	n.a.	0.65	0.83	1.00	+2.2	0.83	0.94	1.04	+1.2	0.94	1.43	1.87	+3.5
Reconstituted panels	m <sup>3</sup> WRME	n.a.	n.a.	n.a.	n.a.	0.00	n.a.	0.00	0.00	0.00	n.a.	0.00	0.00	0.00	n.a.	0.00	0.00	0.00	n.a.
Net pulp exports	m <sup>3</sup> WRME	n.a.	n.a.	n.a.	n.a.	0.00	n.a.	0.00	0.00	0.00	n.a.	0.00	0.00	0.00	n.a.	0.00	0.00	0.00	n.a.
Paper and paperboard	m <sup>3</sup> WRME	n.a.	n.a.	n.a.	n.a.	0.00	n.a.	0.00	0.00	0.00	n.a.	0.00	0.00	0.00	n.a.	0.00	0.00	0.00	n.a.
<b>Total</b>	<b>m<sup>3</sup> WRME</b>	<b>n.a.</b>	<b>n.a.</b>	<b>n.a.</b>	<b>n.a.</b>	<b>1.10</b>	<b>n.a.</b>	<b>0.87</b>	<b>0.93</b>	<b>1.03</b>	<b>+0.9</b>	<b>1.05</b>	<b>1.04</b>	<b>1.07</b>	<b>+0.1</b>	<b>1.16</b>	<b>1.53</b>	<b>1.90</b>	<b>+2.5</b>
<b>Consumption of wood raw materials</b>																			
Industrial roundwood	m <sup>3</sup> WRME	n.a.	n.a.	n.a.	n.a.	3.33	n.a.	2.94	3.65	4.39	+2.0	3.77	4.23	4.61	+1.0	4.35	6.63	8.71	+3.5
Recovered paper	m <sup>3</sup> WRME	n.a.	n.a.	n.a.	n.a.	0.00	n.a.	0.00	0.00	0.00	n.a.	0.00	0.00	0.00	n.a.	0.00	0.00	0.00	n.a.
Net pulp imports	m <sup>3</sup> WRME	n.a.	n.a.	n.a.	n.a.	0.01	n.a.	0.01	0.01	0.01	n.a.	0.01	0.01	0.01	n.a.	0.01	0.01	0.01	n.a.
Other	m <sup>3</sup> WRME	n.a.	n.a.	n.a.	n.a.	-2.24	n.a.	-2.08	-2.74	-3.37	+2.4	-2.74	-3.20	-3.56	+1.3	-3.20	-5.12	-6.82	+3.9
<b>Total</b>	<b>m<sup>3</sup> WRME</b>	<b>n.a.</b>	<b>n.a.</b>	<b>n.a.</b>	<b>n.a.</b>	<b>1.10</b>	<b>n.a.</b>	<b>0.87</b>	<b>0.93</b>	<b>1.03</b>	<b>+0.9</b>	<b>1.05</b>	<b>1.04</b>	<b>1.07</b>	<b>+0.1</b>	<b>1.16</b>	<b>1.53</b>	<b>1.90</b>	<b>+2.5</b>

Please read the introduction for information about data sources, definitions and measurement units

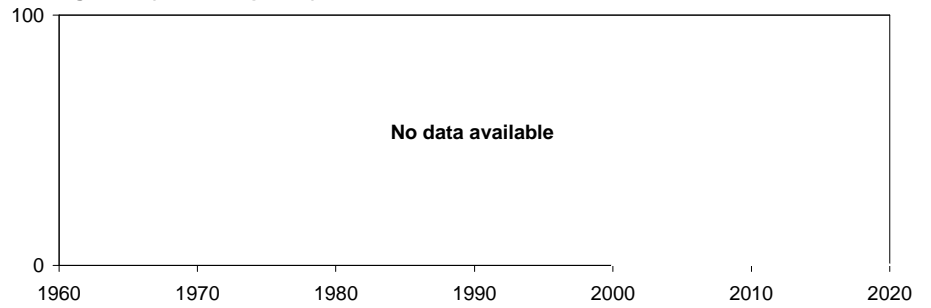
Important forest sector parameters - historical trends and forecasts:

Bosnia and Herzegovina

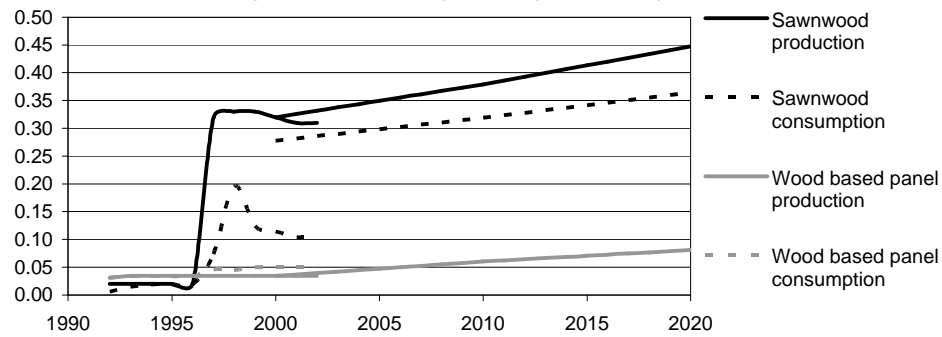
Ratio of fellings to increment (in percent)



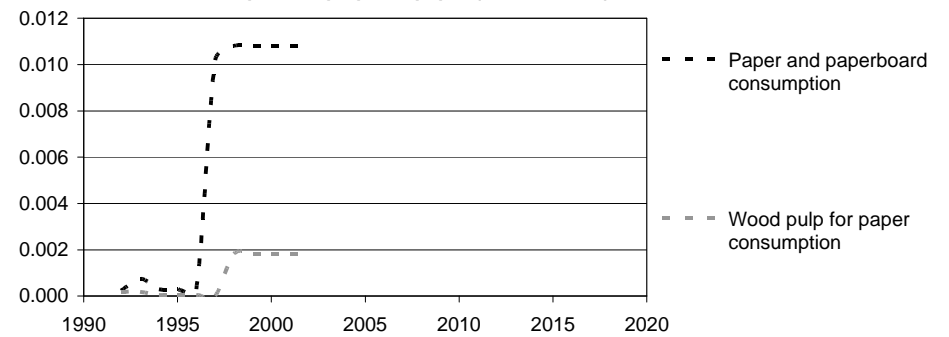
Growing stock (in m<sup>3</sup> o.b. per ha)



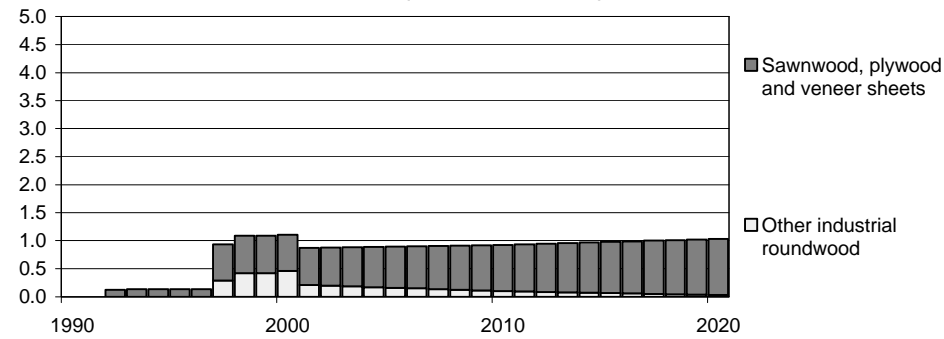
Production and consumption of solid wood products (in million m<sup>3</sup>)



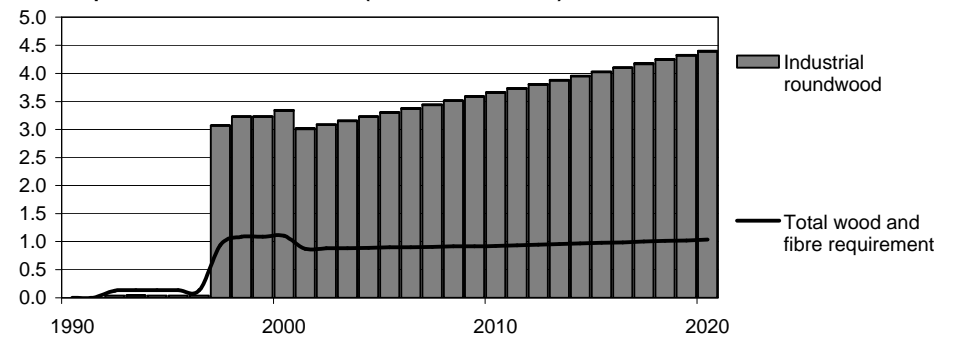
Production and consumption of pulp and paper (in million MT)



Derived demand for wood raw materials (in million m<sup>3</sup> WRME)



Consumption of wood raw materials (in million m<sup>3</sup> WRME)



Please read the introduction for information about data sources, definitions and measurement units

## Important forest sector parameters - historical trends and forecasts:

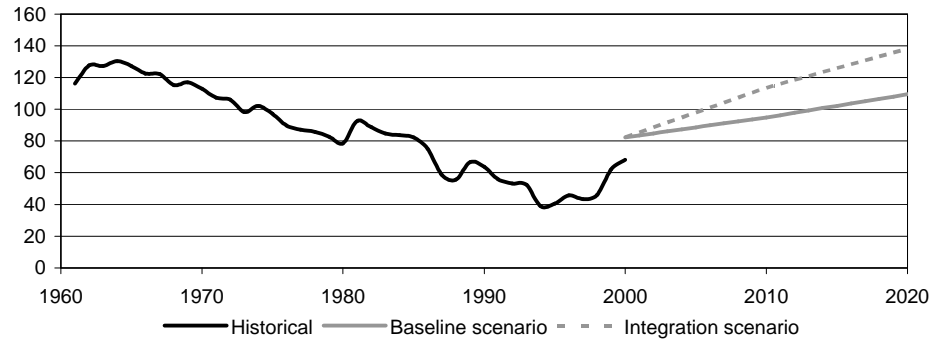
Bulgaria

Parameter	Units (millions)	Historical statistics					Annual change (in %)	Baseline scenario			Annual change (in %)	Conservation scenario			Annual change (in %)	Integration scenario			Annual change (in %)
		Year						Year				Year				Year			
		1961	1970	1980	1990	2000		2000	2010	2020		2000	2010	2020		2000	2010	2020	
<b>Forest resources</b>																			
Forest area	ha	3.24	3.20	3.30	3.22	3.12	-0.1	3.12	3.12	3.12	0.0	n.a.	n.a.	n.a.	n.a.	3.12	3.16	3.32	+0.3
Growing stock	m <sup>3</sup> o.b.	250.50	264.00	298.00	405.00	401.00	+1.2	404.67	411.90	419.13	+0.2	n.a.	n.a.	n.a.	n.a.	404.67	408.26	411.51	+0.1
Increment	m <sup>3</sup> o.b.	6.34	6.50	7.60	9.33	10.20	+1.2	6.88	6.83	6.79	-0.1	n.a.	n.a.	n.a.	n.a.	6.88	6.85	7.11	+0.2
Fellings	m <sup>3</sup> o.b.	7.37	7.34	5.97	5.94	6.95	-0.1	5.65	6.47	7.43	+1.4	5.65	4.99	5.08	-0.5	5.65	7.77	9.83	+2.8
<b>Product production</b>																			
Roundwood	m <sup>3</sup> u.b.	5.07	5.05	4.10	4.09	4.78	-0.1	3.89	4.45	5.11	+1.4	3.89	3.44	3.49	-0.5	3.89	5.35	6.76	+2.8
Sawnwood	m <sup>3</sup>	1.66	1.68	1.43	1.11	0.31	-4.2	0.36	0.47	0.60	+2.6	0.36	0.40	0.45	+1.1	0.36	0.54	0.73	+3.6
Wood based panels	m <sup>3</sup>	0.14	0.38	0.58	0.41	0.47	+3.1	0.22	0.40	0.55	+4.8	0.22	0.27	0.33	+2.1	0.22	0.52	0.77	+6.6
Wood pulp used for paper production	MT	0.00	0.01	0.03	0.01	0.01	+2.4	0.08	0.10	0.13	+2.7	0.08	0.08	0.10	+1.3	0.08	0.11	0.16	+3.6
Paper and paperboard	MT	0.08	0.23	0.40	0.32	0.14	+1.2	0.13	0.17	0.22	+2.7	0.13	0.14	0.16	+1.3	0.13	0.19	0.26	+3.6
Recovered paper	MT	n.a.	0.09	0.13	0.13	0.08	-0.2	0.08	0.14	0.22	+4.9	0.08	0.11	0.15	+3.0	0.08	0.16	0.28	+6.3
<b>Product consumption</b>																			
Roundwood	m <sup>3</sup> u.b.	5.14	5.44	4.42	3.93	4.53	-0.3	3.41	3.74	4.12	+0.9	3.41	3.29	3.40	-0.0	3.41	4.14	4.79	+1.7
Sawnwood	m <sup>3</sup>	1.71	1.83	1.55	1.16	0.07	-8.0	0.18	0.24	0.30	+2.5	0.18	0.20	0.23	+1.1	0.18	0.27	0.36	+3.5
Wood based panels	m <sup>3</sup>	0.11	0.32	0.50	0.37	0.33	+2.8	0.11	0.19	0.27	+4.6	0.11	0.13	0.16	+2.0	0.11	0.25	0.37	+6.3
Wood pulp used for paper production	MT	0.06	0.15	0.39	0.20	0.04	-1.0	0.04	0.05	0.06	+2.7	0.04	0.04	0.05	+1.3	0.04	0.05	0.08	+3.6
Paper and paperboard	MT	0.12	0.33	0.52	0.39	0.21	+1.4	0.21	0.29	0.42	+3.5	0.21	0.24	0.29	+1.6	0.21	0.34	0.54	+4.9
Recovered paper	MT	n.a.	0.09	0.13	0.13	0.11	+0.8	0.08	0.11	0.14	+2.7	0.08	0.09	0.10	+1.3	0.08	0.12	0.17	+3.7
<b>Derived demand for wood raw materials</b>																			
Other industrial roundwood	m <sup>3</sup> WRME	1.50	1.48	0.68	0.92	0.09	-6.9	0.40	0.25	0.14	-5.1	0.40	0.25	0.14	-5.1	0.40	0.25	0.14	-5.1
Sawnwood, plywood and veneer sheets	m <sup>3</sup> WRME	3.38	3.40	2.88	2.18	0.69	-4.0	0.78	1.17	1.51	+3.3	0.78	0.90	1.04	+1.4	0.78	1.42	1.97	+4.7
Reconstituted panels	m <sup>3</sup> WRME	0.11	0.46	0.78	0.55	0.79	+5.2	0.27	0.42	0.58	+4.0	0.27	0.32	0.38	+1.8	0.27	0.52	0.77	+5.5
Net pulp exports	m <sup>3</sup> WRME	0.00	0.00	0.00	0.00	0.24	n.a.	0.21	0.27	0.35	+2.7	0.21	0.23	0.27	+1.3	0.21	0.31	0.43	+3.6
Paper and paperboard	m <sup>3</sup> WRME	0.29	0.81	1.36	1.13	0.47	+1.2	0.43	0.57	0.74	+2.7	0.43	0.48	0.56	+1.3	0.43	0.64	0.89	+3.6
<b>Total</b>	<b>m<sup>3</sup> WRME</b>	<b>5.28</b>	<b>6.15</b>	<b>5.70</b>	<b>4.78</b>	<b>2.29</b>	<b>-2.1</b>	<b>2.09</b>	<b>2.69</b>	<b>3.32</b>	<b>+2.3</b>	<b>2.09</b>	<b>2.17</b>	<b>2.38</b>	<b>+0.7</b>	<b>2.09</b>	<b>3.14</b>	<b>4.20</b>	<b>+3.5</b>
<b>Consumption of wood raw materials</b>																			
Industrial roundwood	m <sup>3</sup> WRME	3.75	4.34	3.59	2.43	2.49	-1.0	2.08	2.28	2.51	+0.9	2.08	1.83	1.79	-0.7	2.08	2.69	3.19	+2.2
Recovered paper	m <sup>3</sup> WRME	n.a.	0.32	0.49	0.49	0.41	+0.8	0.31	0.41	0.53	+2.7	0.31	0.34	0.40	+1.3	0.31	0.46	0.63	+3.7
Net pulp imports	m <sup>3</sup> WRME	0.12	0.34	0.66	0.32	0.00	n.a.	0.00	0.00	0.00	n.a.	0.00	0.00	0.00	n.a.	0.00	0.00	0.00	n.a.
Other	m <sup>3</sup> WRME	1.40	1.15	0.96	1.55	-0.62	n.a.	-0.29	0.00	0.29	n.a.	-0.29	0.00	0.19	n.a.	-0.29	0.00	0.38	n.a.
<b>Total</b>	<b>m<sup>3</sup> WRME</b>	<b>5.28</b>	<b>6.15</b>	<b>5.70</b>	<b>4.78</b>	<b>2.29</b>	<b>-2.1</b>	<b>2.09</b>	<b>2.69</b>	<b>3.32</b>	<b>+2.3</b>	<b>2.09</b>	<b>2.17</b>	<b>2.38</b>	<b>+0.7</b>	<b>2.09</b>	<b>3.14</b>	<b>4.20</b>	<b>+3.5</b>

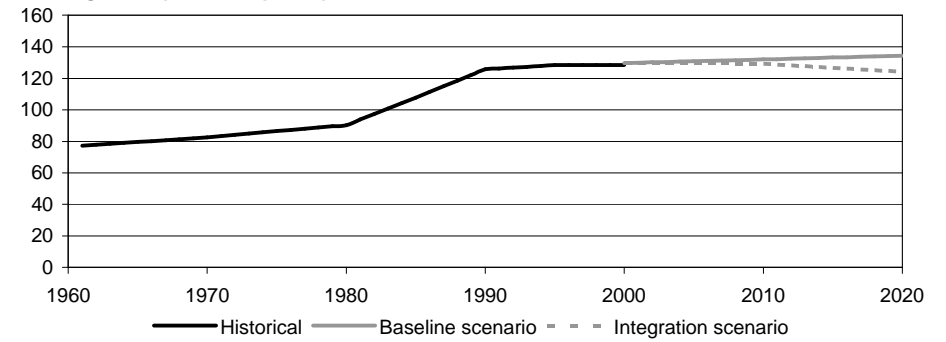
Please read the introduction for information about data sources, definitions and measurement units

**Important forest sector parameters - historical trends and forecasts: Bulgaria**

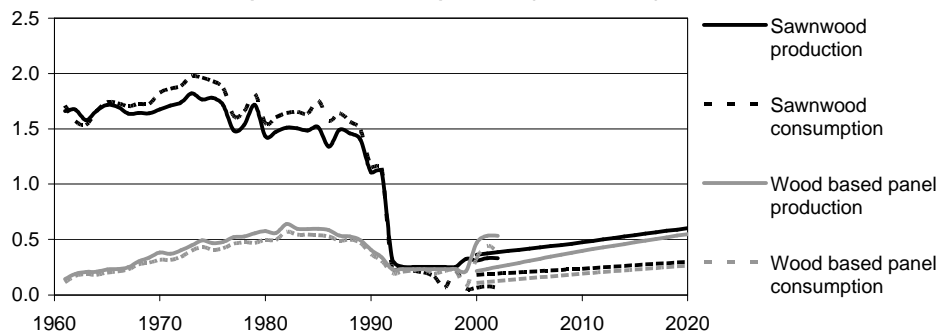
**Ratio of fellings to increment (in percent)**



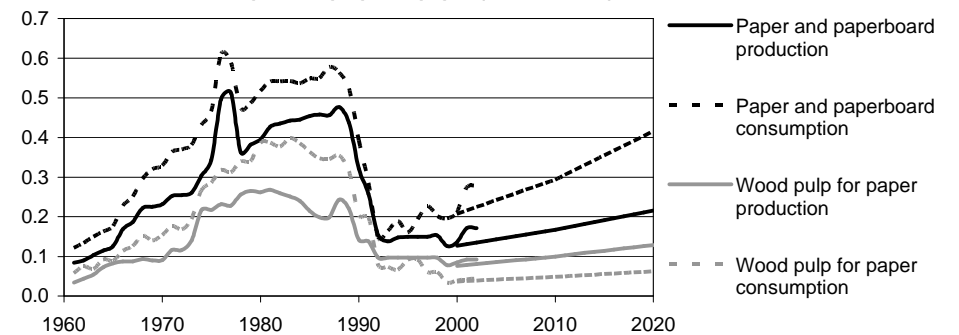
**Growing stock (in m<sup>3</sup> o.b. per ha)**



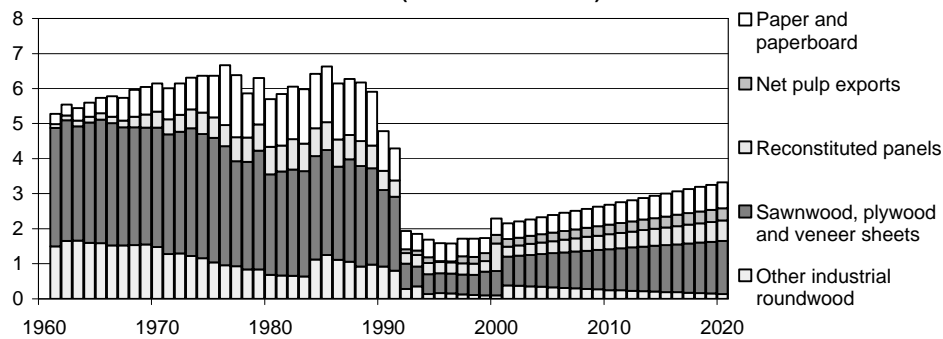
**Production and consumption of solid wood products (in million m<sup>3</sup>)**



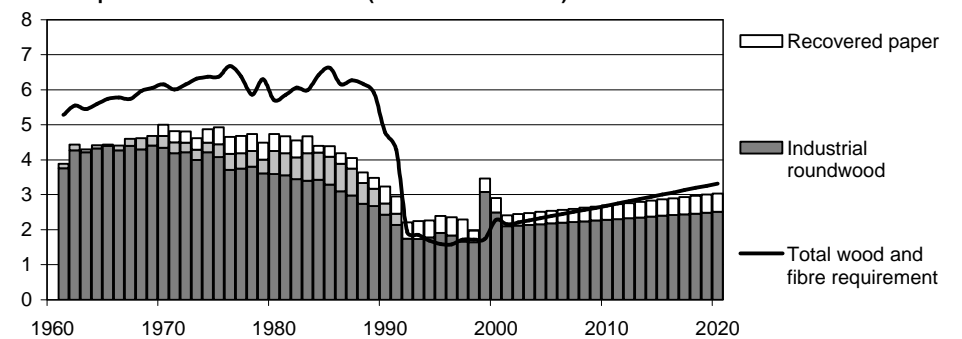
**Production and consumption of pulp and paper (in million MT)**



**Derived demand for wood raw materials (in million m<sup>3</sup> WRME)**



**Consumption of wood raw materials (in million m<sup>3</sup> WRME)**



Please read the introduction for information about data sources, definitions and measurement units

## Important forest sector parameters - historical trends and forecasts:

Croatia

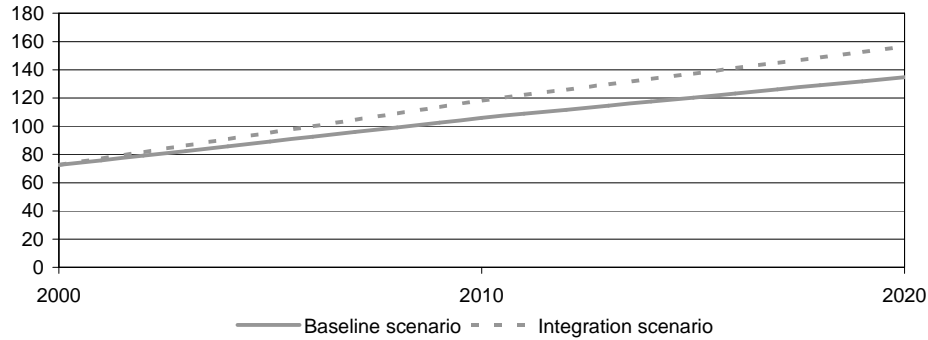
Parameter	Units (millions)	Historical statistics					Annual change (in %)	Baseline scenario			Annual change (in %)	Conservation scenario			Annual change (in %)	Integration scenario			Annual change (in %)
		Year						Year				Year				Year			
		1961	1970	1980	1990	2000		2000	2010	2020		2000	2010	2020		2000	2010	2020	
<b>Forest resources</b>																			
Forest area	ha	n.a.	n.a.	n.a.	n.a.	1.69	n.a.	1.69	1.72	1.74	+0.1	n.a.	n.a.	n.a.	n.a.	1.69	1.73	1.76	+0.2
Growing stock	m <sup>3</sup> o.b.	n.a.	n.a.	n.a.	n.a.	229.83	n.a.	229.83	243.91	250.22	+0.4	n.a.	n.a.	n.a.	n.a.	229.83	242.81	247.11	+0.4
Increment	m <sup>3</sup> o.b.	n.a.	n.a.	n.a.	n.a.	5.19	n.a.	5.19	4.40	4.33	-0.9	n.a.	n.a.	n.a.	n.a.	5.19	4.41	4.39	-0.8
Fellings	m <sup>3</sup> o.b.	n.a.	n.a.	n.a.	n.a.	3.76	n.a.	3.76	4.66	5.83	+2.2	3.76	4.13	4.48	+0.9	3.76	5.22	6.86	+3.1
<b>Product production</b>																			
Roundwood	m <sup>3</sup> u.b.	n.a.	n.a.	n.a.	n.a.	3.67	n.a.	3.03	3.74	4.69	+2.2	3.03	3.32	3.61	+0.9	3.03	4.20	5.52	+3.1
Sawnwood	m <sup>3</sup>	n.a.	n.a.	n.a.	n.a.	0.64	n.a.	0.69	0.83	0.99	+1.8	0.69	0.76	0.83	+0.9	0.69	0.90	1.10	+2.4
Wood based panels	m <sup>3</sup>	n.a.	n.a.	n.a.	n.a.	0.08	n.a.	0.10	0.18	0.25	+4.8	0.10	0.14	0.17	+2.9	0.10	0.22	0.32	+6.1
Wood pulp used for paper production	MT	n.a.	n.a.	n.a.	n.a.	0.01	n.a.	0.10	0.12	0.15	+2.0	0.10	0.11	0.12	+0.7	0.10	0.14	0.18	+2.7
Paper and paperboard	MT	n.a.	n.a.	n.a.	n.a.	0.41	n.a.	0.42	0.55	0.72	+2.7	0.42	0.50	0.57	+1.5	0.42	0.61	0.82	+3.5
Recovered paper	MT	n.a.	n.a.	n.a.	n.a.	0.06	n.a.	0.07	0.16	0.26	+6.5	0.07	0.15	0.20	+5.2	0.07	0.18	0.30	+7.3
<b>Product consumption</b>																			
Roundwood	m <sup>3</sup> u.b.	n.a.	n.a.	n.a.	n.a.	3.18	n.a.	2.62	3.06	3.60	+1.6	2.62	2.79	2.94	+0.6	2.62	3.34	4.09	+2.2
Sawnwood	m <sup>3</sup>	n.a.	n.a.	n.a.	n.a.	0.35	n.a.	0.36	0.46	0.57	+2.3	0.36	0.41	0.46	+1.2	0.36	0.51	0.66	+3.0
Wood based panels	m <sup>3</sup>	n.a.	n.a.	n.a.	n.a.	0.16	n.a.	0.13	0.24	0.33	+4.7	0.13	0.19	0.23	+2.7	0.13	0.29	0.42	+5.9
Wood pulp used for paper production	MT	n.a.	n.a.	n.a.	n.a.	0.09	n.a.	0.07	0.08	0.10	+2.0	0.07	0.07	0.08	+0.7	0.07	0.09	0.12	+2.7
Paper and paperboard	MT	n.a.	n.a.	n.a.	n.a.	0.45	n.a.	0.49	0.65	0.86	+2.9	0.49	0.58	0.67	+1.6	0.49	0.73	1.00	+3.6
Recovered paper	MT	n.a.	n.a.	n.a.	n.a.	0.06	n.a.	0.10	0.17	0.24	+4.6	0.10	0.15	0.19	+3.3	0.10	0.19	0.28	+5.3
<b>Derived demand for wood raw materials</b>																			
Other industrial roundwood	m <sup>3</sup> WRME	n.a.	n.a.	n.a.	n.a.	0.17	n.a.	0.10	0.10	0.10	0.0	0.10	0.10	0.10	0.0	0.10	0.10	0.10	0.0
Sawnwood, plywood and veneer sheets	m <sup>3</sup> WRME	n.a.	n.a.	n.a.	n.a.	1.18	n.a.	1.28	1.63	1.98	+2.2	1.28	1.47	1.61	+1.1	1.28	1.80	2.26	+2.9
Reconstituted panels	m <sup>3</sup> WRME	n.a.	n.a.	n.a.	n.a.	0.06	n.a.	0.08	0.13	0.19	+4.8	0.08	0.11	0.13	+2.8	0.08	0.16	0.24	+6.0
Net pulp exports	m <sup>3</sup> WRME	n.a.	n.a.	n.a.	n.a.	0.08	n.a.	0.08	0.09	0.12	+2.0	0.08	0.08	0.09	+0.7	0.08	0.10	0.13	+2.7
Paper and paperboard	m <sup>3</sup> WRME	n.a.	n.a.	n.a.	n.a.	1.50	n.a.	1.42	1.89	2.46	+2.8	1.42	1.70	1.94	+1.6	1.42	2.10	2.83	+3.5
<b>Total</b>	<b>m<sup>3</sup> WRME</b>	<b>n.a.</b>	<b>n.a.</b>	<b>n.a.</b>	<b>n.a.</b>	<b>2.99</b>	<b>n.a.</b>	<b>2.96</b>	<b>3.85</b>	<b>4.84</b>	<b>+2.5</b>	<b>2.96</b>	<b>3.46</b>	<b>3.87</b>	<b>+1.3</b>	<b>2.96</b>	<b>4.26</b>	<b>5.56</b>	<b>+3.2</b>
<b>Consumption of wood raw materials</b>																			
Industrial roundwood	m <sup>3</sup> WRME	n.a.	n.a.	n.a.	n.a.	2.28	n.a.	2.19	2.70	3.31	+2.1	2.19	2.43	2.65	+0.9	2.19	2.98	3.80	+2.8
Recovered paper	m <sup>3</sup> WRME	n.a.	n.a.	n.a.	n.a.	0.24	n.a.	0.37	0.64	0.91	+4.6	0.37	0.58	0.72	+3.3	0.37	0.71	1.05	+5.3
Net pulp imports	m <sup>3</sup> WRME	n.a.	n.a.	n.a.	n.a.	0.00	n.a.	0.00	0.00	0.00	n.a.	0.00	0.00	0.00	n.a.	0.00	0.00	0.00	n.a.
Other	m <sup>3</sup> WRME	n.a.	n.a.	n.a.	n.a.	0.47	n.a.	0.39	0.51	0.62	+2.3	0.39	0.46	0.50	+1.2	0.39	0.56	0.71	+3.0
<b>Total</b>	<b>m<sup>3</sup> WRME</b>	<b>n.a.</b>	<b>n.a.</b>	<b>n.a.</b>	<b>n.a.</b>	<b>2.99</b>	<b>n.a.</b>	<b>2.96</b>	<b>3.85</b>	<b>4.84</b>	<b>+2.5</b>	<b>2.96</b>	<b>3.46</b>	<b>3.87</b>	<b>+1.3</b>	<b>2.96</b>	<b>4.26</b>	<b>5.56</b>	<b>+3.2</b>

Please read the introduction for information about data sources, definitions and measurement units

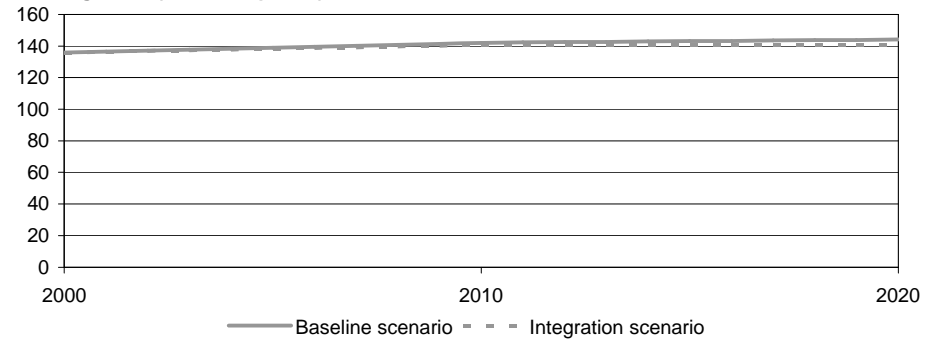


**Important forest sector parameters - historical trends and forecasts: Croatia**

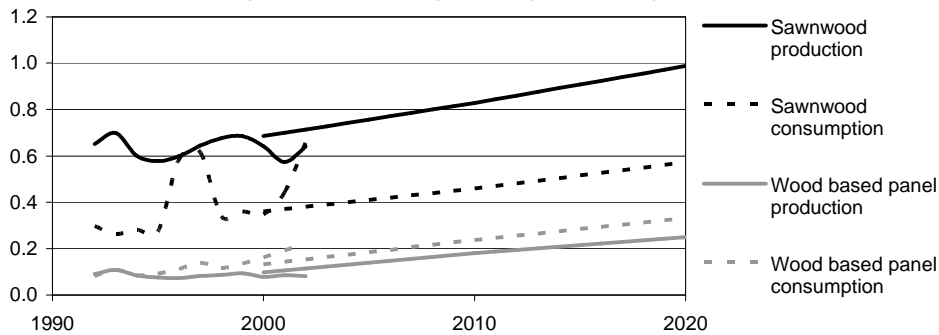
**Ratio of fellings to increment (in percent)**



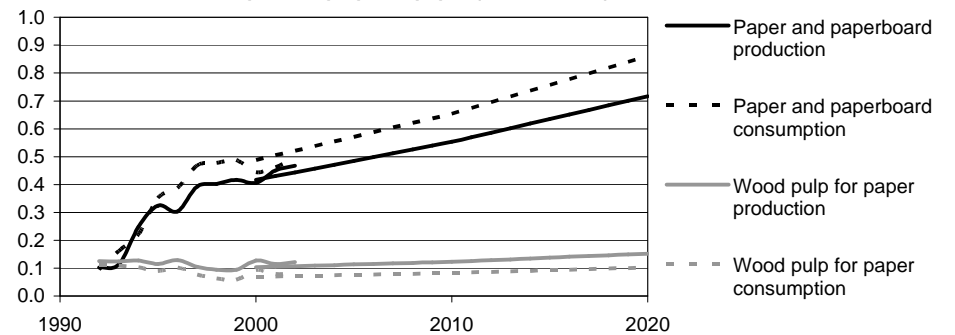
**Growing stock (in m<sup>3</sup> o.b. per ha)**



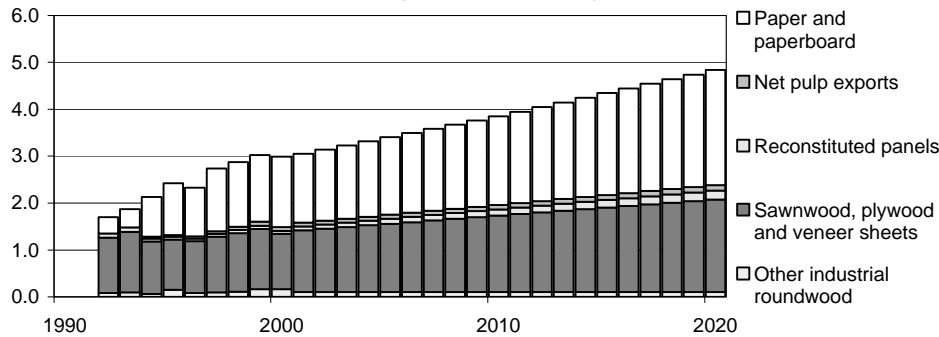
**Production and consumption of solid wood products (in million m<sup>3</sup>)**



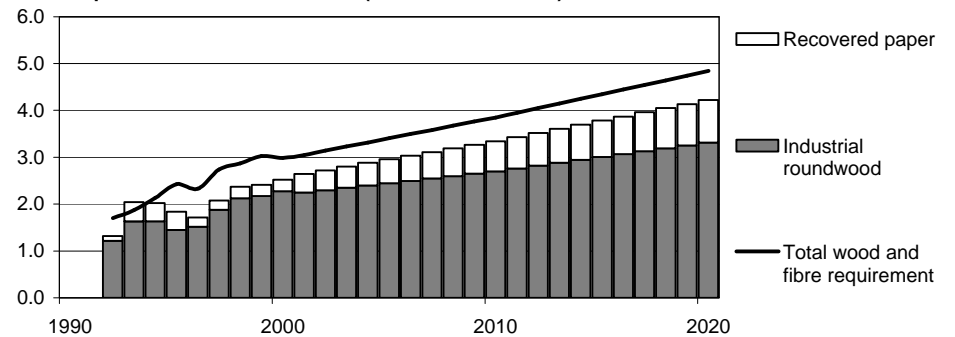
**Production and consumption of pulp and paper (in million MT)**



**Derived demand for wood raw materials (in million m<sup>3</sup> WRME)**



**Consumption of wood raw materials (in million m<sup>3</sup> WRME)**



Please read the introduction for information about data sources, definitions and measurement units

## Important forest sector parameters - historical trends and forecasts:

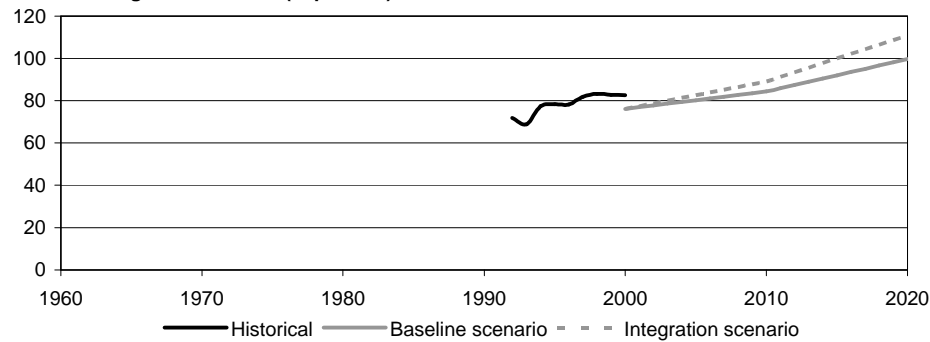
## Czech Republic

Parameter	Units (millions)	Historical statistics					Annual change (in %)	Baseline scenario			Annual change (in %)	Conservation scenario			Annual change (in %)	Integration scenario			Annual change (in %)
		Year						Year				Year				Year			
		1961	1970	1980	1990	2000		2000	2010	2020		2000	2010	2020		2000	2010	2020	
<b>Forest resources</b>																			
Forest area	ha	2.49	2.41	2.51	2.55	2.49	-0.0	2.56	2.57	2.59	+0.1	n.a.	n.a.	n.a.	n.a.	2.56	2.56	2.56	+0.0
Growing stock	m <sup>3</sup> o.b.	426.50	530.00	639.00	683.00	752.00	+1.5	782.31	801.65	791.31	+0.1	n.a.	n.a.	n.a.	n.a.	782.31	787.86	752.90	-0.2
Increment	m <sup>3</sup> o.b.	14.02	16.90	19.40	18.60	23.10	+1.3	24.61	23.77	22.21	-0.5	n.a.	n.a.	n.a.	n.a.	24.61	23.73	22.13	-0.5
Fellings	m <sup>3</sup> o.b.	n.a.	n.a.	n.a.	n.a.	2.56	n.a.	18.73	20.05	22.15	+0.8	18.73	19.18	20.73	+0.5	18.73	21.13	24.50	+1.4
<b>Product production</b>																			
Roundwood	m <sup>3</sup> u.b.	n.a.	n.a.	n.a.	n.a.	14.44	n.a.	14.18	15.18	16.77	+0.8	14.18	14.52	15.70	+0.5	14.18	16.00	18.55	+1.4
Sawnwood	m <sup>3</sup>	n.a.	n.a.	n.a.	n.a.	4.11	n.a.	3.94	4.74	5.59	+1.8	3.94	4.43	4.94	+1.1	3.94	5.07	6.36	+2.4
Wood based panels	m <sup>3</sup>	n.a.	n.a.	n.a.	n.a.	0.92	n.a.	0.91	1.36	1.73	+3.2	0.91	1.21	1.43	+2.3	0.91	1.53	2.10	+4.2
Wood pulp used for paper production	MT	n.a.	n.a.	n.a.	n.a.	0.06	n.a.	0.61	0.89	1.23	+3.5	0.61	0.78	0.99	+2.4	0.61	1.01	1.55	+4.7
Paper and paperboard	MT	n.a.	n.a.	n.a.	n.a.	0.80	n.a.	0.80	1.19	1.62	+3.6	0.80	1.05	1.31	+2.5	0.80	1.35	2.04	+4.8
Recovered paper	MT	n.a.	n.a.	n.a.	n.a.	0.37	n.a.	0.36	0.61	0.91	+4.7	0.36	0.54	0.72	+3.5	0.36	0.70	1.15	+6.0
<b>Product consumption</b>																			
Roundwood	m <sup>3</sup> u.b.	n.a.	n.a.	n.a.	n.a.	13.37	n.a.	12.97	14.53	17.16	+1.4	12.97	13.36	14.73	+0.6	12.97	15.82	20.19	+2.2
Sawnwood	m <sup>3</sup>	n.a.	n.a.	n.a.	n.a.	2.66	n.a.	2.54	3.05	3.59	+1.7	2.54	2.86	3.18	+1.1	2.54	3.26	4.08	+2.4
Wood based panels	m <sup>3</sup>	n.a.	n.a.	n.a.	n.a.	0.74	n.a.	0.72	1.05	1.32	+3.1	0.72	0.93	1.10	+2.2	0.72	1.17	1.60	+4.1
Wood pulp used for paper production	MT	n.a.	n.a.	n.a.	n.a.	0.46	n.a.	0.46	0.62	0.82	+2.9	0.46	0.55	0.66	+1.8	0.46	0.71	1.03	+4.1
Paper and paperboard	MT	n.a.	n.a.	n.a.	n.a.	0.85	n.a.	0.84	1.28	1.78	+3.8	0.84	1.12	1.41	+2.6	0.84	1.46	2.26	+5.1
Recovered paper	MT	n.a.	n.a.	n.a.	n.a.	0.34	n.a.	0.31	0.52	0.75	+4.5	0.31	0.46	0.60	+3.4	0.31	0.60	0.94	+5.7
<b>Derived demand for wood raw materials</b>																			
Other industrial roundwood	m <sup>3</sup> WRME	n.a.	n.a.	n.a.	n.a.	0.40	n.a.	0.40	0.40	0.40	0.0	0.40	0.40	0.40	0.0	0.40	0.40	0.40	0.0
Sawnwood, plywood and veneer sheets	m <sup>3</sup> WRME	n.a.	n.a.	n.a.	n.a.	6.82	n.a.	6.54	7.98	9.43	+1.8	6.54	7.44	8.30	+1.2	6.54	8.57	10.77	+2.5
Reconstituted panels	m <sup>3</sup> WRME	n.a.	n.a.	n.a.	n.a.	1.28	n.a.	1.27	1.84	2.35	+3.1	1.27	1.64	1.95	+2.2	1.27	2.06	2.84	+4.1
Net pulp exports	m <sup>3</sup> WRME	n.a.	n.a.	n.a.	n.a.	0.94	n.a.	0.83	1.40	2.19	+5.0	0.83	1.23	1.76	+3.8	0.83	1.59	2.76	+6.2
Paper and paperboard	m <sup>3</sup> WRME	n.a.	n.a.	n.a.	n.a.	2.78	n.a.	2.77	4.16	5.69	+3.7	2.77	3.66	4.57	+2.5	2.77	4.72	7.16	+4.9
<b>Total</b>	<b>m<sup>3</sup> WRME</b>	<b>n.a.</b>	<b>n.a.</b>	<b>n.a.</b>	<b>n.a.</b>	<b>12.22</b>	<b>n.a.</b>	<b>11.81</b>	<b>15.79</b>	<b>20.06</b>	<b>+2.7</b>	<b>11.81</b>	<b>14.38</b>	<b>16.98</b>	<b>+1.8</b>	<b>11.81</b>	<b>17.34</b>	<b>23.92</b>	<b>+3.6</b>
<b>Consumption of wood raw materials</b>																			
Industrial roundwood	m <sup>3</sup> WRME	n.a.	n.a.	n.a.	n.a.	12.59	n.a.	12.17	13.81	16.52	+1.5	12.17	12.64	14.08	+0.7	12.17	15.10	19.54	+2.4
Recovered paper	m <sup>3</sup> WRME	n.a.	n.a.	n.a.	n.a.	1.28	n.a.	1.18	1.99	2.84	+4.5	1.18	1.75	2.28	+3.4	1.18	2.26	3.57	+5.7
Net pulp imports	m <sup>3</sup> WRME	n.a.	n.a.	n.a.	n.a.	0.00	n.a.	0.00	0.00	0.00	n.a.	0.00	0.00	0.00	n.a.	0.00	0.00	0.00	n.a.
Other	m <sup>3</sup> WRME	n.a.	n.a.	n.a.	n.a.	-1.65	n.a.	-1.54	-0.02	0.70	n.a.	-1.54	-0.02	0.62	n.a.	-1.54	-0.02	0.80	n.a.
<b>Total</b>	<b>m<sup>3</sup> WRME</b>	<b>n.a.</b>	<b>n.a.</b>	<b>n.a.</b>	<b>n.a.</b>	<b>12.22</b>	<b>n.a.</b>	<b>11.81</b>	<b>15.79</b>	<b>20.06</b>	<b>+2.7</b>	<b>11.81</b>	<b>14.38</b>	<b>16.98</b>	<b>+1.8</b>	<b>11.81</b>	<b>17.34</b>	<b>23.92</b>	<b>+3.6</b>

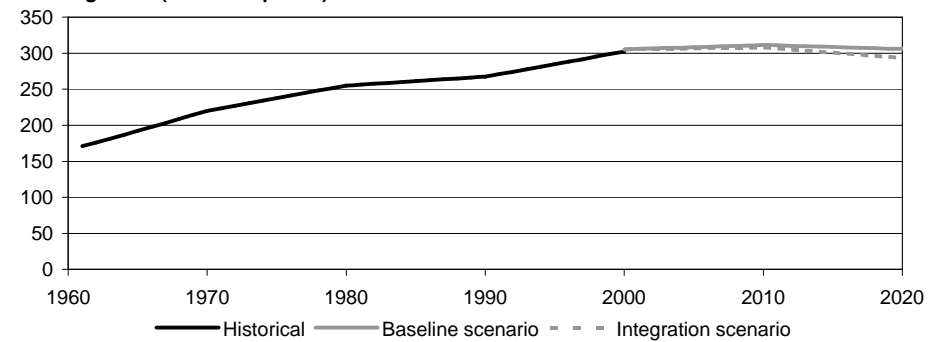
Please read the introduction for information about data sources, definitions and measurement units

**Important forest sector parameters - historical trends and forecasts: Czech Republic**

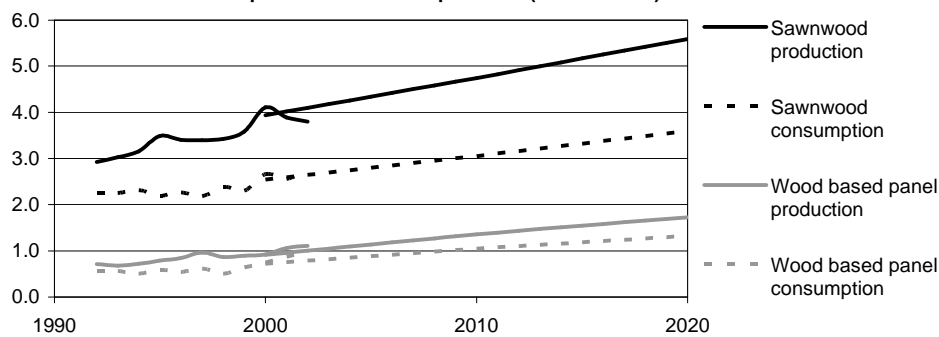
**Ratio of fellings to increment (in percent)**



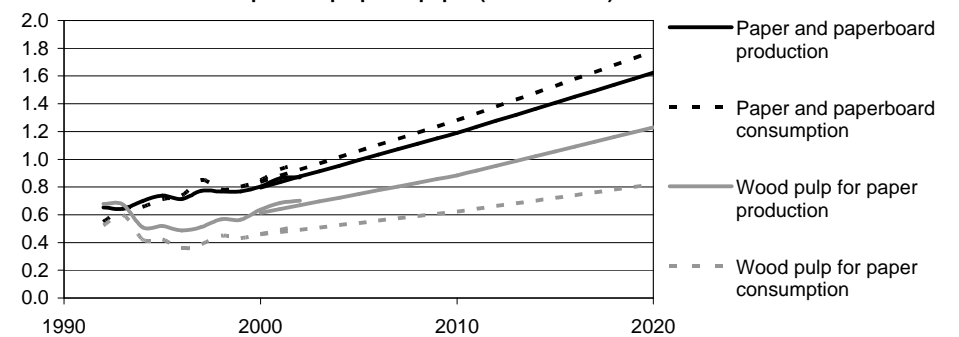
**Growing stock (in m<sup>3</sup> o.b. per ha)**



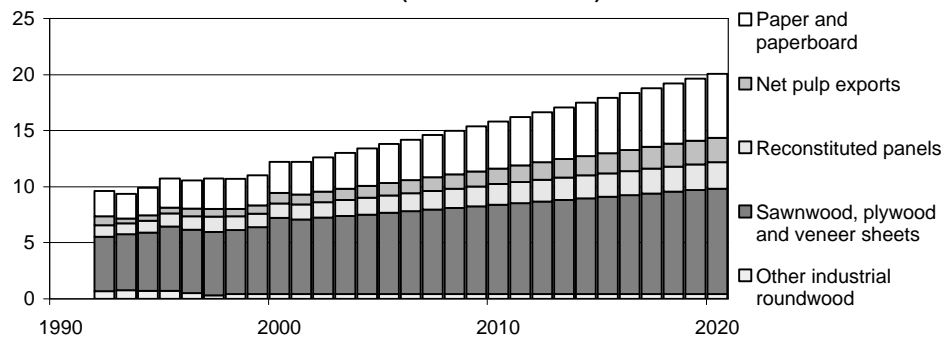
**Production and consumption of solid wood products (in million m<sup>3</sup>)**



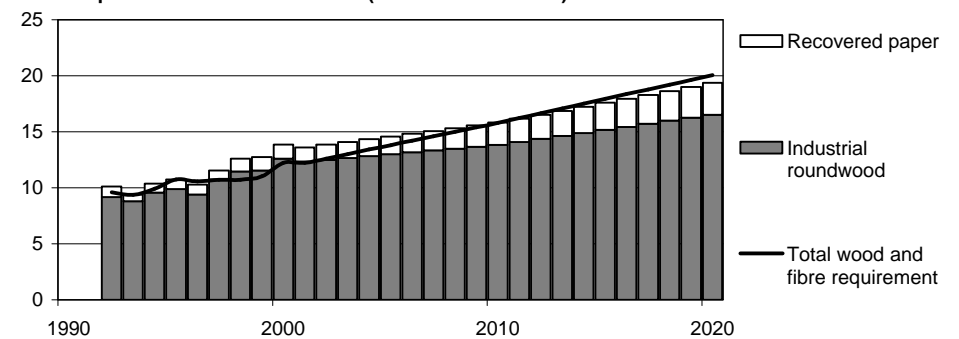
**Production and consumption of pulp and paper (in million MT)**



**Derived demand for wood raw materials (in million m<sup>3</sup> WRME)**



**Consumption of wood raw materials (in million m<sup>3</sup> WRME)**



Please read the introduction for information about data sources, definitions and measurement units

## Important forest sector parameters - historical trends and forecasts:

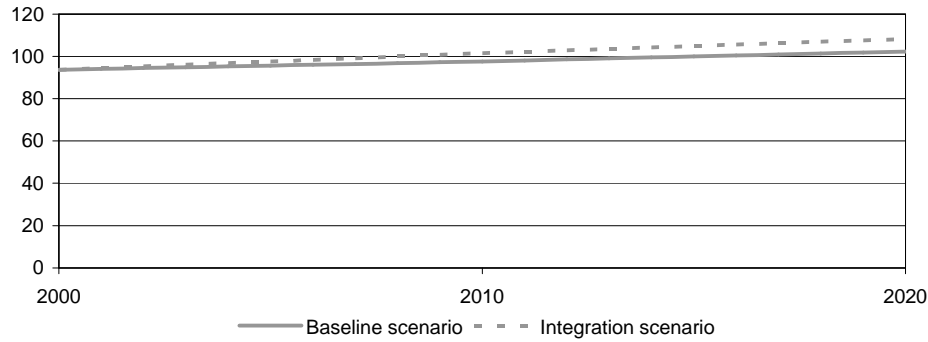
Estonia

Parameter	Units (millions)	Historical statistics					Annual change (in %)	Baseline scenario			Annual change (in %)	Conservation scenario			Annual change (in %)	Integration scenario			Annual change (in %)
		Year						Year				Year				Year			
		1961	1970	1980	1990	2000		2000	2010	2020		2000	2010	2020		2000	2010	2020	
<b>Forest resources</b>																			
Forest area	ha	n.a.	n.a.	n.a.	n.a.	1.92	n.a.	1.92	1.97	2.01	+0.2	n.a.	n.a.	n.a.	n.a.	1.92	1.81	1.80	-0.3
Growing stock	m <sup>3</sup> o.b.	n.a.	n.a.	n.a.	n.a.	412.45	n.a.	412.45	407.25	402.06	-0.1	n.a.	n.a.	n.a.	n.a.	412.45	402.02	385.36	-0.3
Increment	m <sup>3</sup> o.b.	n.a.	n.a.	n.a.	n.a.	10.89	n.a.	10.89	10.34	9.80	-0.5	n.a.	n.a.	n.a.	n.a.	10.89	9.94	9.26	-0.8
Fellings	m <sup>3</sup> o.b.	n.a.	n.a.	n.a.	n.a.	10.20	n.a.	10.20	10.09	10.02	-0.1	10.20	10.09	10.02	-0.1	10.20	10.09	10.02	-0.1
<b>Product production</b>																			
Roundwood	m <sup>3</sup> u.b.	n.a.	n.a.	n.a.	n.a.	8.91	n.a.	7.65	7.57	7.52	-0.1	7.65	7.57	7.52	-0.1	7.65	7.57	7.52	-0.1
Sawnwood	m <sup>3</sup>	n.a.	n.a.	n.a.	n.a.	1.44	n.a.	1.44	1.79	2.18	+2.1	1.44	1.63	1.86	+1.3	1.44	1.94	2.52	+2.9
Wood based panels	m <sup>3</sup>	n.a.	n.a.	n.a.	n.a.	0.41	n.a.	0.42	0.61	0.72	+2.7	0.42	0.53	0.59	+1.7	0.42	0.68	0.85	+3.6
Wood pulp used for paper production	MT	n.a.	n.a.	n.a.	n.a.	0.01	n.a.	0.04	0.05	0.06	+2.2	0.04	0.05	0.06	+1.8	0.04	0.06	0.07	+3.1
Paper and paperboard	MT	n.a.	n.a.	n.a.	n.a.	0.05	n.a.	0.05	0.06	0.08	+2.0	0.05	0.06	0.07	+1.3	0.05	0.07	0.09	+2.6
Recovered paper	MT	n.a.	n.a.	n.a.	n.a.	0.01	n.a.	0.01	0.02	0.04	+7.0	0.01	0.02	0.03	+5.8	0.01	0.02	0.04	+8.1
<b>Product consumption</b>																			
Roundwood	m <sup>3</sup> u.b.	n.a.	n.a.	n.a.	n.a.	4.82	n.a.	3.68	4.40	5.09	+1.6	3.68	4.05	4.44	+0.9	3.68	4.74	5.82	+2.3
Sawnwood	m <sup>3</sup>	n.a.	n.a.	n.a.	n.a.	0.57	n.a.	0.63	0.79	0.97	+2.1	0.63	0.72	0.82	+1.3	0.63	0.86	1.12	+2.9
Wood based panels	m <sup>3</sup>	n.a.	n.a.	n.a.	n.a.	0.16	n.a.	0.19	0.30	0.35	+3.0	0.19	0.25	0.28	+1.9	0.19	0.34	0.42	+3.9
Wood pulp used for paper production	MT	n.a.	n.a.	n.a.	n.a.	0.05	n.a.	0.04	0.05	0.05	+1.2	0.04	0.04	0.05	+0.8	0.04	0.05	0.06	+2.1
Paper and paperboard	MT	n.a.	n.a.	n.a.	n.a.	0.07	n.a.	0.06	0.09	0.12	+3.3	0.06	0.08	0.09	+2.2	0.06	0.10	0.15	+4.5
Recovered paper	MT	n.a.	n.a.	n.a.	n.a.	0.00	n.a.	0.00	0.01	0.01	+8.1	0.00	0.00	0.01	+7.4	0.00	0.01	0.01	+8.8
<b>Derived demand for wood raw materials</b>																			
Other industrial roundwood	m <sup>3</sup> WRME	n.a.	n.a.	n.a.	n.a.	0.62	n.a.	0.28	0.25	0.23	-1.0	0.28	0.25	0.23	-1.0	0.28	0.25	0.23	-1.0
Sawnwood, plywood and veneer sheets	m <sup>3</sup> WRME	n.a.	n.a.	n.a.	n.a.	2.57	n.a.	2.57	3.27	3.96	+2.2	2.57	2.95	3.37	+1.4	2.57	3.56	4.60	+3.0
Reconstituted panels	m <sup>3</sup> WRME	n.a.	n.a.	n.a.	n.a.	0.57	n.a.	0.58	0.80	0.94	+2.5	0.58	0.70	0.79	+1.6	0.58	0.88	1.11	+3.3
Net pulp exports	m <sup>3</sup> WRME	n.a.	n.a.	n.a.	n.a.	0.00	n.a.	0.00	0.02	0.05	n.a.	0.00	0.02	0.04	n.a.	0.00	0.02	0.06	n.a.
Paper and paperboard	m <sup>3</sup> WRME	n.a.	n.a.	n.a.	n.a.	0.18	n.a.	0.17	0.22	0.26	+2.0	0.17	0.20	0.23	+1.3	0.17	0.23	0.29	+2.6
<b>Total</b>	<b>m<sup>3</sup> WRME</b>	<b>n.a.</b>	<b>n.a.</b>	<b>n.a.</b>	<b>n.a.</b>	<b>3.94</b>	<b>n.a.</b>	<b>3.60</b>	<b>4.55</b>	<b>5.44</b>	<b>+2.1</b>	<b>3.60</b>	<b>4.13</b>	<b>4.66</b>	<b>+1.3</b>	<b>3.60</b>	<b>4.94</b>	<b>6.29</b>	<b>+2.8</b>
<b>Consumption of wood raw materials</b>																			
Industrial roundwood	m <sup>3</sup> WRME	n.a.	n.a.	n.a.	n.a.	3.36	n.a.	3.12	3.92	4.66	+2.0	3.12	3.56	4.01	+1.3	3.12	4.26	5.39	+2.8
Recovered paper	m <sup>3</sup> WRME	n.a.	n.a.	n.a.	n.a.	-0.01	n.a.	0.01	0.03	0.05	+8.1	0.01	0.02	0.03	+7.4	0.01	0.02	0.04	+8.8
Net pulp imports	m <sup>3</sup> WRME	n.a.	n.a.	n.a.	n.a.	0.00	n.a.	0.00	0.00	0.00	n.a.	0.00	0.00	0.00	n.a.	0.00	0.00	0.00	n.a.
Other	m <sup>3</sup> WRME	n.a.	n.a.	n.a.	n.a.	0.59	n.a.	0.47	0.61	0.73	+2.2	0.47	0.55	0.62	+1.4	0.47	0.66	0.85	+3.0
<b>Total</b>	<b>m<sup>3</sup> WRME</b>	<b>n.a.</b>	<b>n.a.</b>	<b>n.a.</b>	<b>n.a.</b>	<b>3.94</b>	<b>n.a.</b>	<b>3.60</b>	<b>4.55</b>	<b>5.44</b>	<b>+2.1</b>	<b>3.60</b>	<b>4.13</b>	<b>4.66</b>	<b>+1.3</b>	<b>3.60</b>	<b>4.94</b>	<b>6.29</b>	<b>+2.8</b>

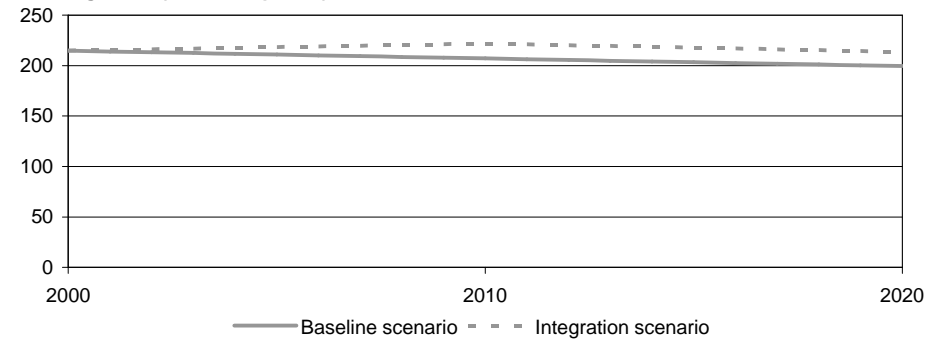
Please read the introduction for information about data sources, definitions and measurement units

Important forest sector parameters - historical trends and forecasts: Estonia

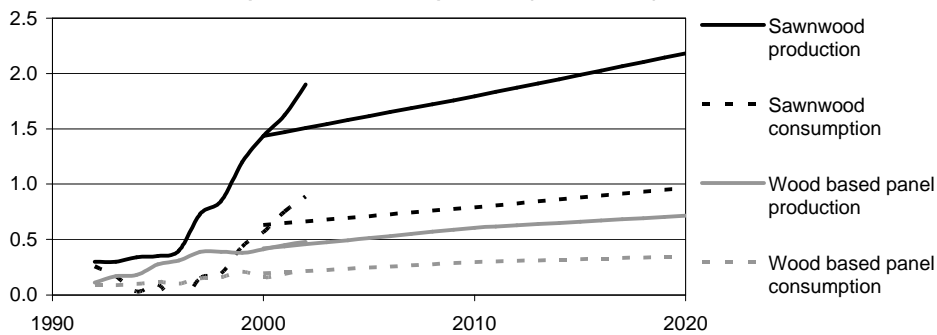
Ratio of fellings to increment (in percent)



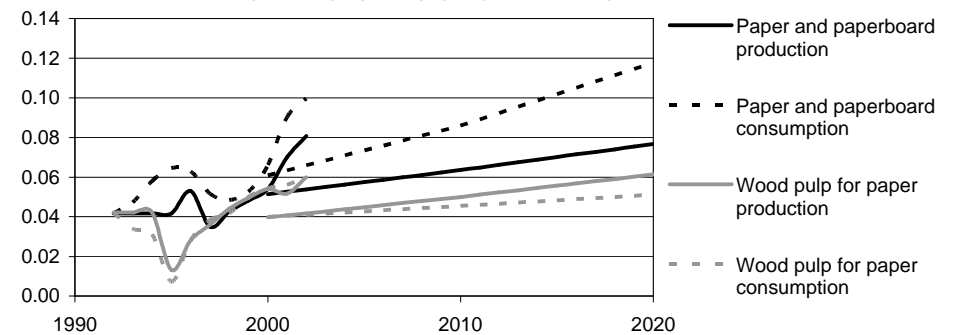
Growing stock (in m<sup>3</sup> o.b. per ha)



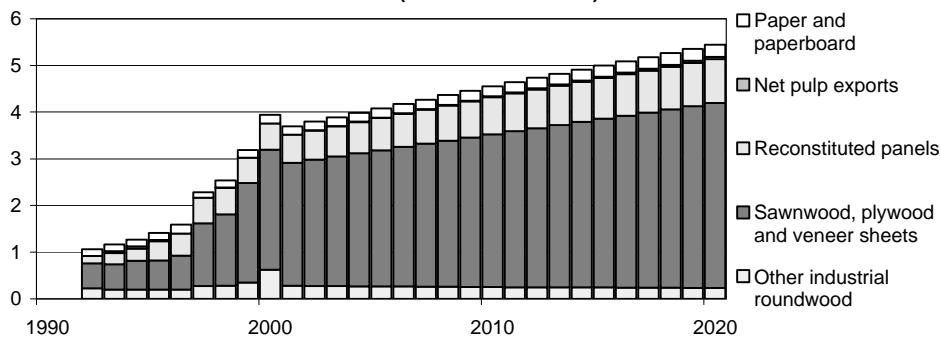
Production and consumption of solid wood products (in million m<sup>3</sup>)



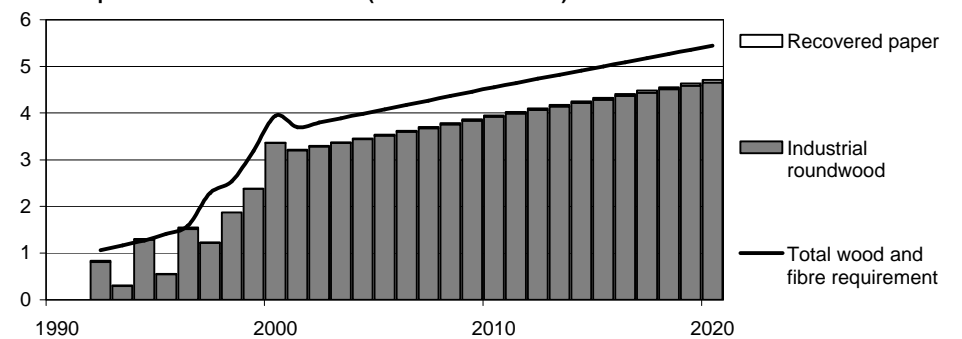
Production and consumption of pulp and paper (in million MT)



Derived demand for wood raw materials (in million m<sup>3</sup> WRME)



Consumption of wood raw materials (in million m<sup>3</sup> WRME)



Please read the introduction for information about data sources, definitions and measurement units

## Important forest sector parameters - historical trends and forecasts:

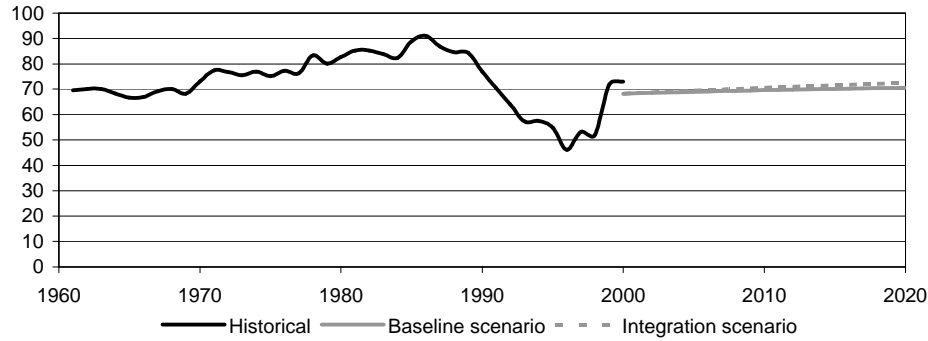
Hungary

Parameter	Units (millions)	Historical statistics					Annual change (in %)	Baseline scenario			Annual change (in %)	Conservation scenario			Annual change (in %)	Integration scenario			Annual change (in %)
		Year						Year				Year				Year			
		1961	1970	1980	1990	2000		2000	2010	2020		2000	2010	2020		2000	2010	2020	
<b>Forest resources</b>																			
Forest area	ha	1.32	1.48	1.60	1.69	1.75	+0.7	1.70	1.74	1.77	+0.2	n.a.	n.a.	n.a.	n.a.	1.70	1.75	1.79	+0.2
Growing stock	m <sup>3</sup> o.b.	183.40	214.00	244.00	274.00	305.00	+1.3	316.65	352.17	370.23	+0.8	n.a.	n.a.	n.a.	n.a.	316.65	350.04	362.62	+0.7
Increment	m <sup>3</sup> o.b.	6.71	8.60	9.30	9.70	10.10	+1.1	9.71	9.33	9.15	-0.3	n.a.	n.a.	n.a.	n.a.	9.71	9.36	9.23	-0.3
Fellings	m <sup>3</sup> o.b.	4.67	6.29	7.69	7.46	7.37	+1.2	6.63	6.50	6.46	-0.1	6.63	6.38	6.22	-0.3	6.63	6.61	6.69	+0.0
<b>Product production</b>																			
Roundwood	m <sup>3</sup> u.b.	3.74	5.03	6.16	5.97	5.90	+1.2	5.31	5.21	5.17	-0.1	5.31	5.11	4.98	-0.3	5.31	5.29	5.36	+0.0
Sawnwood	m <sup>3</sup>	0.70	0.94	1.32	1.10	0.29	-2.2	0.30	0.35	0.41	+1.6	0.30	0.33	0.37	+1.0	0.30	0.37	0.45	+2.1
Wood based panels	m <sup>3</sup>	0.11	0.20	0.42	0.40	0.56	+4.4	0.55	0.82	1.13	+3.6	0.55	0.72	0.89	+2.4	0.55	0.91	1.39	+4.7
Wood pulp used for paper production	MT	0.01	0.01	0.01	0.00	0.00	n.a.	0.00	0.00	0.00	n.a.	0.00	0.00	0.00	n.a.	0.00	0.00	0.00	n.a.
Paper and paperboard	MT	0.15	0.26	0.44	0.44	0.51	+3.1	0.49	0.78	1.13	+4.2	0.49	0.66	0.85	+2.8	0.49	0.89	1.44	+5.5
Recovered paper	MT	n.a.	0.10	0.22	0.32	0.27	+3.3	0.30	0.55	0.84	+5.4	0.30	0.47	0.63	+3.9	0.30	0.63	1.08	+6.7
<b>Product consumption</b>																			
Roundwood	m <sup>3</sup> u.b.	5.32	6.09	7.04	5.07	4.66	-0.3	3.95	3.96	4.07	+0.1	3.95	3.82	3.76	-0.2	3.95	4.08	4.38	+0.5
Sawnwood	m <sup>3</sup>	1.37	1.77	2.10	1.71	1.07	-0.6	1.04	1.27	1.51	+1.9	1.04	1.17	1.30	+1.1	1.04	1.35	1.72	+2.5
Wood based panels	m <sup>3</sup>	0.13	0.27	0.48	0.40	0.49	+3.5	0.48	0.72	0.99	+3.7	0.48	0.63	0.78	+2.5	0.48	0.80	1.22	+4.8
Wood pulp used for paper production	MT	0.10	0.20	0.28	0.18	0.17	+1.4	0.18	0.28	0.41	+4.3	0.18	0.24	0.31	+2.8	0.18	0.32	0.53	+5.6
Paper and paperboard	MT	0.22	0.46	0.68	0.61	0.77	+3.3	0.74	1.18	1.68	+4.2	0.74	1.00	1.26	+2.7	0.74	1.35	2.15	+5.5
Recovered paper	MT	n.a.	0.10	0.18	0.56	0.32	+3.8	0.32	0.52	0.75	+4.3	0.32	0.44	0.56	+2.8	0.32	0.59	0.97	+5.6
<b>Derived demand for wood raw materials</b>																			
Other industrial roundwood	m <sup>3</sup> WRME	0.84	0.76	0.59	0.32	1.31	+1.2	0.64	0.64	0.64	0.0	0.64	0.64	0.64	0.0	0.64	0.64	0.64	0.0
Sawnwood, plywood and veneer sheets	m <sup>3</sup> WRME	1.25	1.58	2.21	1.85	0.52	-2.2	0.53	0.64	0.75	+1.8	0.53	0.60	0.66	+1.1	0.53	0.68	0.83	+2.3
Reconstituted panels	m <sup>3</sup> WRME	0.10	0.35	0.78	0.67	0.97	+6.1	0.96	1.38	1.88	+3.4	0.96	1.21	1.49	+2.3	0.96	1.53	2.29	+4.5
Net pulp exports	m <sup>3</sup> WRME	0.00	0.00	0.00	0.00	0.00	n.a.	0.00	0.00	0.00	n.a.	0.00	0.00	0.00	n.a.	0.00	0.00	0.00	n.a.
Paper and paperboard	m <sup>3</sup> WRME	0.54	0.92	1.57	1.58	1.85	+3.2	1.79	2.86	4.16	+4.3	1.79	2.43	3.11	+2.8	1.79	3.28	5.35	+5.6
<b>Total</b>	<b>m<sup>3</sup> WRME</b>	<b>2.73</b>	<b>3.62</b>	<b>5.15</b>	<b>4.43</b>	<b>4.65</b>	<b>+1.4</b>	<b>3.91</b>	<b>5.52</b>	<b>7.43</b>	<b>+3.3</b>	<b>3.91</b>	<b>4.88</b>	<b>5.91</b>	<b>+2.1</b>	<b>3.91</b>	<b>6.13</b>	<b>9.11</b>	<b>+4.3</b>
<b>Consumption of wood raw materials</b>																			
Industrial roundwood	m <sup>3</sup> WRME	2.79	3.55	4.56	2.77	2.37	-0.4	1.81	2.16	2.54	+1.7	1.81	2.02	2.23	+1.1	1.81	2.28	2.85	+2.3
Recovered paper	m <sup>3</sup> WRME	n.a.	0.40	0.69	2.12	1.21	+3.8	1.23	1.96	2.85	+4.3	1.23	1.66	2.13	+2.8	1.23	2.25	3.67	+5.6
Net pulp imports	m <sup>3</sup> WRME	0.18	0.53	0.84	0.59	0.74	+3.8	0.79	1.26	1.83	+4.3	0.79	1.07	1.37	+2.8	0.79	1.44	2.35	+5.6
Other	m <sup>3</sup> WRME	-0.24	-0.86	-0.94	-1.05	0.33	-200.9	0.09	0.14	0.20	+4.2	0.09	0.13	0.17	+3.4	0.09	0.15	0.24	+4.9
<b>Total</b>	<b>m<sup>3</sup> WRME</b>	<b>2.73</b>	<b>3.62</b>	<b>5.15</b>	<b>4.43</b>	<b>4.65</b>	<b>+1.4</b>	<b>3.91</b>	<b>5.52</b>	<b>7.43</b>	<b>+3.3</b>	<b>3.91</b>	<b>4.88</b>	<b>5.91</b>	<b>+2.1</b>	<b>3.91</b>	<b>6.13</b>	<b>9.11</b>	<b>+4.3</b>

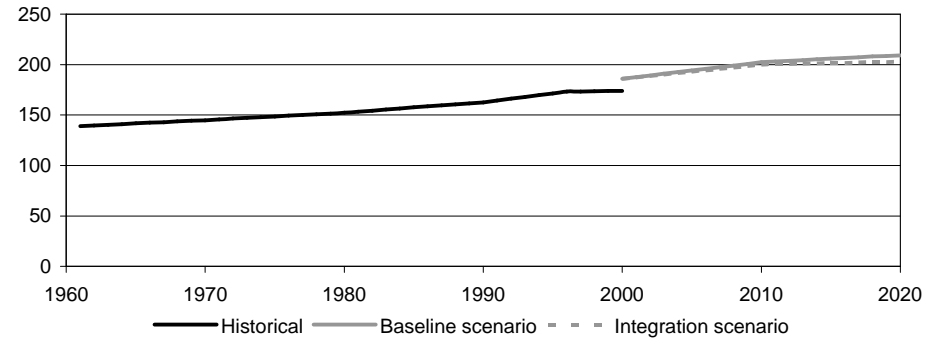
Please read the introduction for information about data sources, definitions and measurement units

Important forest sector parameters - historical trends and forecasts: Hungary

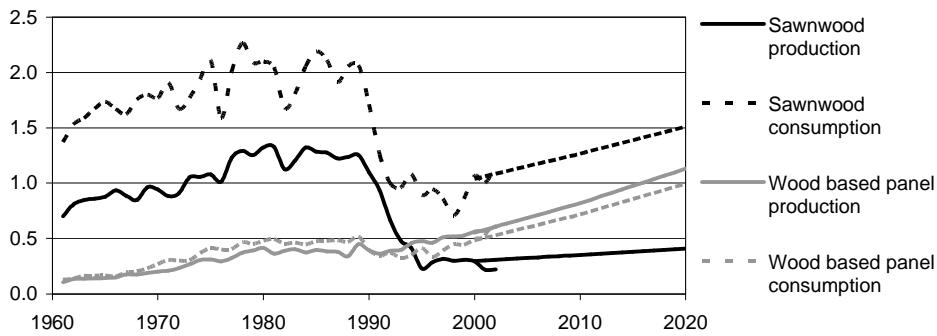
Ratio of fellings to increment (in percent)



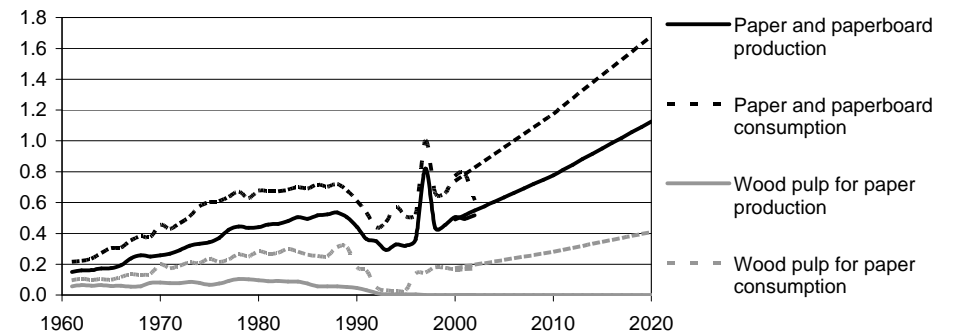
Growing stock (in m<sup>3</sup> o.b. per ha)



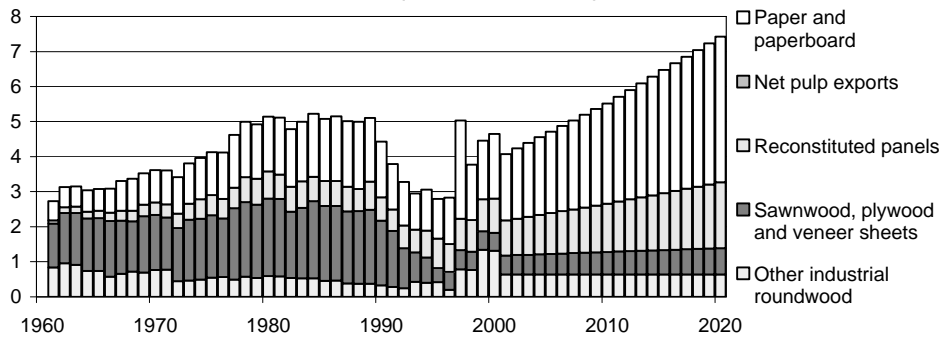
Production and consumption of solid wood products (in million m<sup>3</sup>)



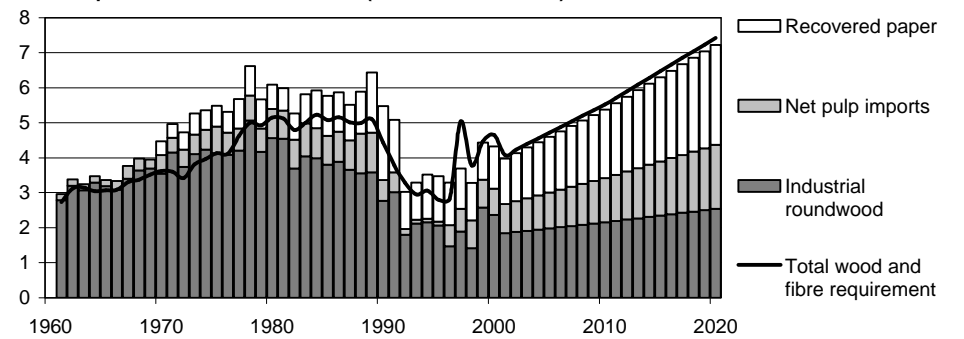
Production and consumption of pulp and paper (in million MT)



Derived demand for wood raw materials (in million m<sup>3</sup> WRME)



Consumption of wood raw materials (in million m<sup>3</sup> WRME)



Please read the introduction for information about data sources, definitions and measurement units

## Important forest sector parameters - historical trends and forecasts:

Latvia

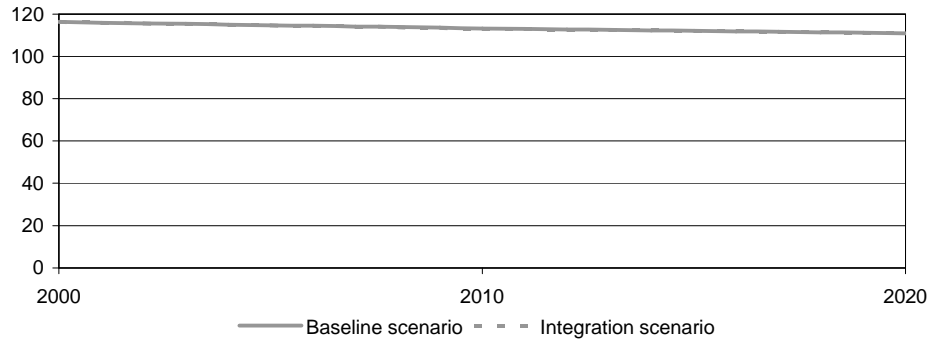
Parameter	Units (millions)	Historical statistics					Annual change (in %)	Baseline scenario			Annual change (in %)	Conservation scenario			Annual change (in %)	Integration scenario			Annual change (in %)
		Year						Year				Year				Year			
		1961	1970	1980	1990	2000		2000	2010	2020		2000	2010	2020		2000	2010	2020	
<b>Forest resources</b>																			
Forest area	ha	n.a.	n.a.	n.a.	n.a.	2.42	n.a.	2.42	2.49	2.55	+0.3	n.a.	n.a.	n.a.	n.a.	2.42	2.51	2.58	+0.3
Growing stock	m <sup>3</sup> o.b.	n.a.	n.a.	n.a.	n.a.	487.69	n.a.	487.69	454.88	422.07	-0.7	n.a.	n.a.	n.a.	n.a.	487.69	445.68	396.12	-1.0
Increment	m <sup>3</sup> o.b.	n.a.	n.a.	n.a.	n.a.	14.02	n.a.	14.02	14.20	14.38	+0.1	n.a.	n.a.	n.a.	n.a.	14.02	14.21	14.39	+0.1
Fellings	m <sup>3</sup> o.b.	n.a.	n.a.	n.a.	n.a.	16.29	n.a.	16.29	16.08	15.95	-0.1	16.29	16.08	15.95	-0.1	16.29	16.08	15.95	-0.1
<b>Product production</b>																			
Roundwood	m <sup>3</sup> u.b.	n.a.	n.a.	n.a.	n.a.	14.30	n.a.	11.89	11.73	11.64	-0.1	11.89	11.73	11.64	-0.1	11.89	11.73	11.64	-0.1
Sawnwood	m <sup>3</sup>	n.a.	n.a.	n.a.	n.a.	3.90	n.a.	3.92	5.21	6.56	+2.6	3.92	4.63	5.46	+1.7	3.92	5.67	7.59	+3.4
Wood based panels	m <sup>3</sup>	n.a.	n.a.	n.a.	n.a.	0.29	n.a.	0.30	0.46	0.59	+3.4	0.30	0.39	0.47	+2.2	0.30	0.51	0.70	+4.3
Wood pulp used for paper production	MT	n.a.	n.a.	n.a.	n.a.	0.00	n.a.	0.00	0.00	0.00	n.a.	0.00	0.00	0.00	n.a.	0.00	0.00	0.00	n.a.
Paper and paperboard	MT	n.a.	n.a.	n.a.	n.a.	0.02	n.a.	0.02	0.02	0.03	+3.1	0.02	0.02	0.03	+2.1	0.02	0.03	0.04	+3.9
Recovered paper	MT	n.a.	n.a.	n.a.	n.a.	0.04	n.a.	0.04	0.06	0.10	+4.9	0.04	0.05	0.07	+3.5	0.04	0.07	0.12	+6.1
<b>Product consumption</b>																			
Roundwood	m <sup>3</sup> u.b.	n.a.	n.a.	n.a.	n.a.	10.09	n.a.	8.31	10.07	11.82	+1.8	8.31	9.08	10.00	+0.9	8.31	10.88	13.53	+2.5
Sawnwood	m <sup>3</sup>	n.a.	n.a.	n.a.	n.a.	0.96	n.a.	1.06	1.41	1.77	+2.6	1.06	1.25	1.47	+1.7	1.06	1.53	2.04	+3.3
Wood based panels	m <sup>3</sup>	n.a.	n.a.	n.a.	n.a.	0.10	n.a.	0.10	0.16	0.20	+3.6	0.10	0.13	0.16	+2.4	0.10	0.17	0.24	+4.5
Wood pulp used for paper production	MT	n.a.	n.a.	n.a.	n.a.	0.00	n.a.	0.00	0.00	0.00	+3.2	0.00	0.00	0.00	+2.1	0.00	0.00	0.00	+4.0
Paper and paperboard	MT	n.a.	n.a.	n.a.	n.a.	0.09	n.a.	0.08	0.12	0.18	+4.2	0.08	0.10	0.13	+2.8	0.08	0.14	0.22	+5.3
Recovered paper	MT	n.a.	n.a.	n.a.	n.a.	0.01	n.a.	0.01	0.01	0.02	+3.2	0.01	0.01	0.01	+2.1	0.01	0.01	0.02	+4.0
<b>Derived demand for wood raw materials</b>																			
Other industrial roundwood	m <sup>3</sup> WRME	n.a.	n.a.	n.a.	n.a.	0.47	n.a.	0.40	0.40	0.40	0.0	0.40	0.40	0.40	0.0	0.40	0.40	0.40	0.0
Sawnwood, plywood and veneer sheets	m <sup>3</sup> WRME	n.a.	n.a.	n.a.	n.a.	7.03	n.a.	7.05	9.35	11.74	+2.6	7.05	8.33	9.80	+1.7	7.05	10.16	13.55	+3.3
Reconstituted panels	m <sup>3</sup> WRME	n.a.	n.a.	n.a.	n.a.	0.17	n.a.	0.19	0.35	0.48	+4.7	0.19	0.28	0.36	+3.2	0.19	0.41	0.61	+5.9
Net pulp exports	m <sup>3</sup> WRME	n.a.	n.a.	n.a.	n.a.	0.00	n.a.	0.00	0.00	0.00	n.a.	0.00	0.00	0.00	n.a.	0.00	0.00	0.00	n.a.
Paper and paperboard	m <sup>3</sup> WRME	n.a.	n.a.	n.a.	n.a.	0.06	n.a.	0.06	0.08	0.11	+3.2	0.06	0.07	0.09	+2.1	0.06	0.09	0.13	+4.0
<b>Total</b>	<b>m<sup>3</sup> WRME</b>	<b>n.a.</b>	<b>n.a.</b>	<b>n.a.</b>	<b>n.a.</b>	<b>7.72</b>	<b>n.a.</b>	<b>7.70</b>	<b>10.18</b>	<b>12.73</b>	<b>+2.5</b>	<b>7.70</b>	<b>9.09</b>	<b>10.65</b>	<b>+1.6</b>	<b>7.70</b>	<b>11.06</b>	<b>14.68</b>	<b>+3.3</b>
<b>Consumption of wood raw materials</b>																			
Industrial roundwood	m <sup>3</sup> WRME	n.a.	n.a.	n.a.	n.a.	8.57	n.a.	7.39	9.31	11.15	+2.1	7.39	8.32	9.33	+1.2	7.39	10.12	12.86	+2.8
Recovered paper	m <sup>3</sup> WRME	n.a.	n.a.	n.a.	n.a.	0.05	n.a.	0.03	0.05	0.06	+3.2	0.03	0.04	0.05	+2.1	0.03	0.05	0.07	+4.0
Net pulp imports	m <sup>3</sup> WRME	n.a.	n.a.	n.a.	n.a.	0.00	n.a.	0.00	0.00	0.00	+3.2	0.00	0.00	0.00	+2.1	0.00	0.00	0.00	+4.0
Other	m <sup>3</sup> WRME	n.a.	n.a.	n.a.	n.a.	-0.90	n.a.	0.28	0.82	1.52	+8.9	0.28	0.73	1.27	+7.9	0.28	0.89	1.75	+9.7
<b>Total</b>	<b>m<sup>3</sup> WRME</b>	<b>n.a.</b>	<b>n.a.</b>	<b>n.a.</b>	<b>n.a.</b>	<b>7.72</b>	<b>n.a.</b>	<b>7.70</b>	<b>10.18</b>	<b>12.73</b>	<b>+2.5</b>	<b>7.70</b>	<b>9.09</b>	<b>10.65</b>	<b>+1.6</b>	<b>7.70</b>	<b>11.06</b>	<b>14.68</b>	<b>+3.3</b>

Please read the introduction for information about data sources, definitions and measurement units

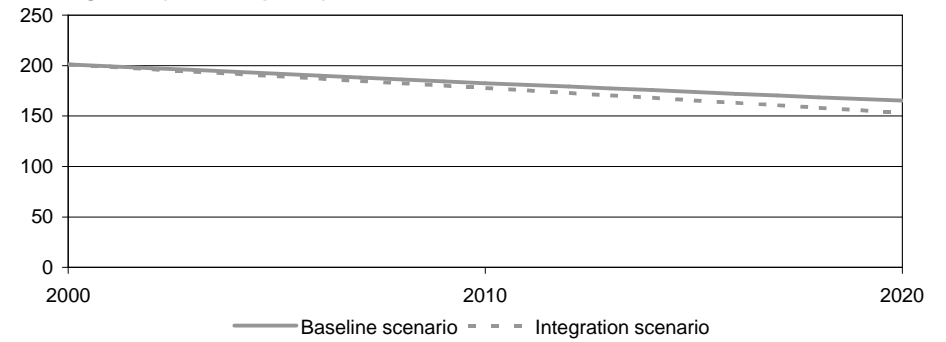


Important forest sector parameters - historical trends and forecasts: Latvia

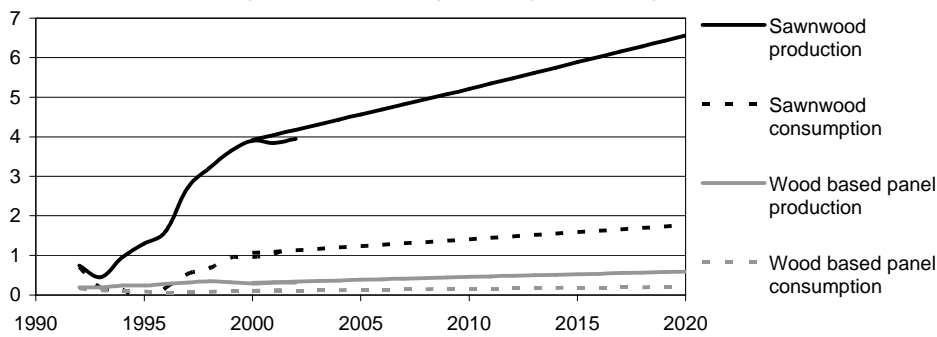
Ratio of fellings to increment (in percent)



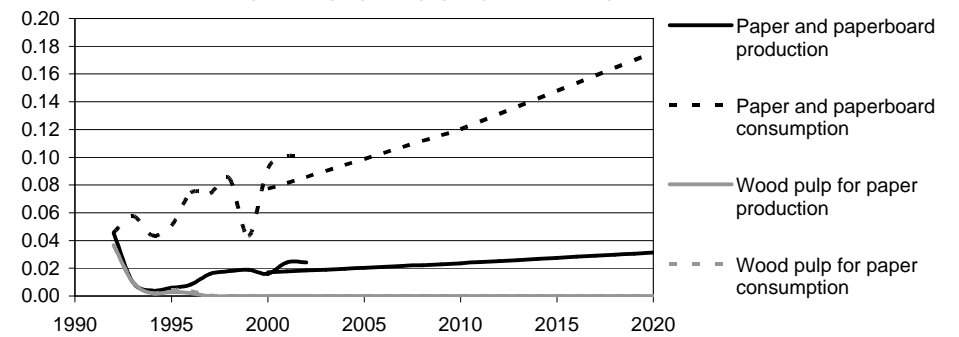
Growing stock (in m<sup>3</sup> o.b. per ha)



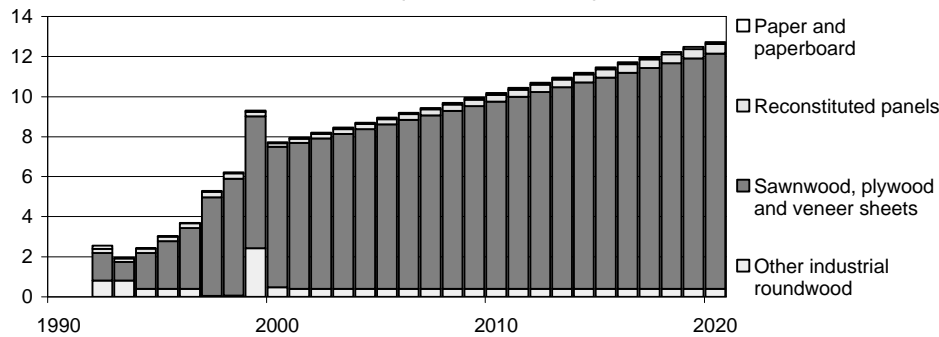
Production and consumption of solid wood products (in million m<sup>3</sup>)



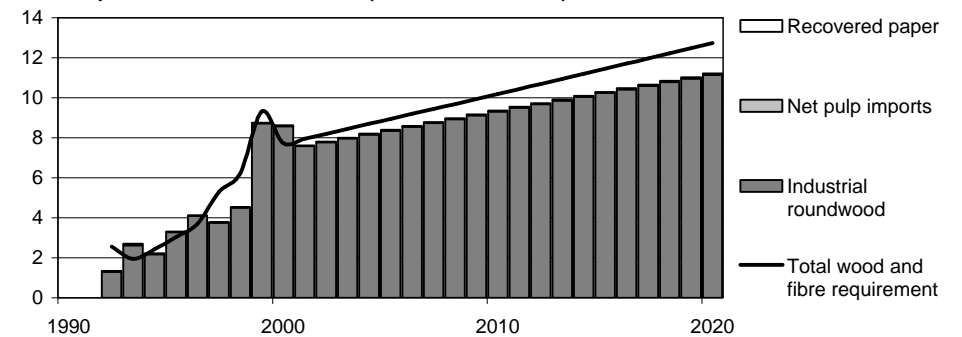
Production and consumption of pulp and paper (in million MT)



Derived demand for wood raw materials (in million m<sup>3</sup> WRME)



Consumption of wood raw materials (in million m<sup>3</sup> WRME)



Please read the introduction for information about data sources, definitions and measurement units

## Important forest sector parameters - historical trends and forecasts:

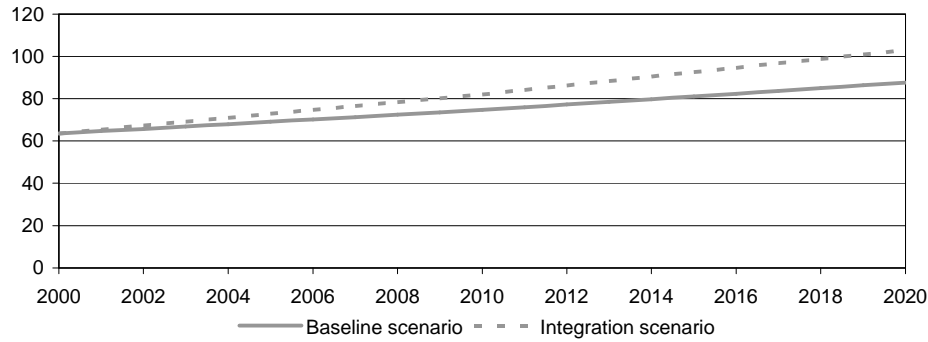
## Lithuania

Parameter	Units (millions)	Historical statistics					Annual change (in %)	Baseline scenario			Annual change (in %)	Conservation scenario			Annual change (in %)	Integration scenario			Annual change (in %)
		Year						Year				Year				Year			
		1961	1970	1980	1990	2000		2000	2010	2020		2000	2010	2020		2000	2010	2020	
<b>Forest resources</b>																			
Forest area	ha	n.a.	n.a.	n.a.	n.a.	1.68	n.a.	1.68	1.71	1.75	+0.2	n.a.	n.a.	n.a.	n.a.	1.68	1.72	1.76	+0.2
Growing stock	m <sup>3</sup> o.b.	n.a.	n.a.	n.a.	n.a.	343.22	n.a.	343.22	352.58	361.94	+0.3	n.a.	n.a.	n.a.	n.a.	343.22	348.49	347.68	+0.1
Increment	m <sup>3</sup> o.b.	n.a.	n.a.	n.a.	n.a.	9.76	n.a.	9.76	9.44	9.12	-0.3	n.a.	n.a.	n.a.	n.a.	9.76	9.47	9.24	-0.3
Fellings	m <sup>3</sup> o.b.	n.a.	n.a.	n.a.	n.a.	6.20	n.a.	6.20	7.04	7.99	+1.3	6.20	6.23	6.96	+0.6	6.20	7.76	9.51	+2.2
<b>Product production</b>																			
Roundwood	m <sup>3</sup> u.b.	n.a.	n.a.	n.a.	n.a.	5.50	n.a.	4.68	5.32	6.04	+1.3	4.68	4.71	5.26	+0.6	4.68	5.87	7.19	+2.2
Sawnwood	m <sup>3</sup>	n.a.	n.a.	n.a.	n.a.	1.30	n.a.	1.25	1.68	2.15	+2.7	1.25	1.51	1.80	+1.8	1.25	1.83	2.48	+3.5
Wood based panels	m <sup>3</sup>	n.a.	n.a.	n.a.	n.a.	0.27	n.a.	0.23	0.40	0.56	+4.6	0.23	0.33	0.43	+3.2	0.23	0.46	0.69	+5.7
Wood pulp used for paper production	MT	n.a.	n.a.	n.a.	n.a.	0.00	n.a.	0.00	0.00	0.00	n.a.	0.00	0.00	0.00	n.a.	0.00	0.00	0.00	n.a.
Paper and paperboard	MT	n.a.	n.a.	n.a.	n.a.	0.05	n.a.	0.05	0.07	0.09	+3.3	0.05	0.06	0.07	+2.3	0.05	0.07	0.11	+4.1
Recovered paper	MT	n.a.	n.a.	n.a.	n.a.	0.03	n.a.	0.04	0.07	0.11	+5.6	0.04	0.06	0.08	+4.2	0.04	0.08	0.14	+6.8
<b>Product consumption</b>																			
Roundwood	m <sup>3</sup> u.b.	n.a.	n.a.	n.a.	n.a.	4.36	n.a.	3.74	4.12	4.55	+1.0	3.74	3.70	3.83	+0.1	3.74	4.47	5.25	+1.7
Sawnwood	m <sup>3</sup>	n.a.	n.a.	n.a.	n.a.	0.76	n.a.	0.73	1.00	1.28	+2.8	0.73	0.89	1.07	+1.9	0.73	1.09	1.49	+3.6
Wood based panels	m <sup>3</sup>	n.a.	n.a.	n.a.	n.a.	0.17	n.a.	0.15	0.26	0.36	+4.5	0.15	0.21	0.27	+3.1	0.15	0.29	0.44	+5.6
Wood pulp used for paper production	MT	n.a.	n.a.	n.a.	n.a.	0.00	n.a.	0.00	0.00	0.00	+3.3	0.00	0.00	0.00	+2.3	0.00	0.00	0.01	+4.2
Paper and paperboard	MT	n.a.	n.a.	n.a.	n.a.	0.09	n.a.	0.09	0.14	0.22	+4.4	0.09	0.12	0.16	+3.0	0.09	0.16	0.27	+5.6
Recovered paper	MT	n.a.	n.a.	n.a.	n.a.	0.07	n.a.	0.05	0.08	0.10	+3.3	0.05	0.07	0.09	+2.3	0.05	0.08	0.12	+4.2
<b>Derived demand for wood raw materials</b>																			
Other industrial roundwood	m <sup>3</sup> WRME	n.a.	n.a.	n.a.	n.a.	0.05	n.a.	0.10	0.10	0.10	0.0	0.10	0.10	0.10	0.0	0.10	0.10	0.10	0.0
Sawnwood, plywood and veneer sheets	m <sup>3</sup> WRME	n.a.	n.a.	n.a.	n.a.	2.20	n.a.	2.11	2.87	3.66	+2.8	2.11	2.56	3.06	+1.9	2.11	3.12	4.25	+3.6
Reconstituted panels	m <sup>3</sup> WRME	n.a.	n.a.	n.a.	n.a.	0.47	n.a.	0.39	0.67	0.94	+4.4	0.39	0.56	0.72	+3.1	0.39	0.77	1.15	+5.5
Net pulp exports	m <sup>3</sup> WRME	n.a.	n.a.	n.a.	n.a.	0.00	n.a.	0.00	0.00	0.00	n.a.	0.00	0.00	0.00	n.a.	0.00	0.00	0.00	n.a.
Paper and paperboard	m <sup>3</sup> WRME	n.a.	n.a.	n.a.	n.a.	0.18	n.a.	0.16	0.23	0.31	+3.3	0.16	0.21	0.26	+2.3	0.16	0.26	0.37	+4.2
<b>Total</b>	<b>m<sup>3</sup> WRME</b>	<b>n.a.</b>	<b>n.a.</b>	<b>n.a.</b>	<b>n.a.</b>	<b>2.90</b>	<b>n.a.</b>	<b>2.77</b>	<b>3.88</b>	<b>5.01</b>	<b>+3.0</b>	<b>2.77</b>	<b>3.42</b>	<b>4.14</b>	<b>+2.0</b>	<b>2.77</b>	<b>4.24</b>	<b>5.87</b>	<b>+3.8</b>
<b>Consumption of wood raw materials</b>																			
Industrial roundwood	m <sup>3</sup> WRME	n.a.	n.a.	n.a.	n.a.	2.91	n.a.	3.18	3.64	4.11	+1.3	3.18	3.21	3.39	+0.3	3.18	3.98	4.82	+2.1
Recovered paper	m <sup>3</sup> WRME	n.a.	n.a.	n.a.	n.a.	0.25	n.a.	0.21	0.29	0.40	+3.3	0.21	0.26	0.33	+2.3	0.21	0.32	0.47	+4.2
Net pulp imports	m <sup>3</sup> WRME	n.a.	n.a.	n.a.	n.a.	0.01	n.a.	0.01	0.02	0.02	+3.3	0.01	0.01	0.02	+2.3	0.01	0.02	0.03	+4.2
Other	m <sup>3</sup> WRME	n.a.	n.a.	n.a.	n.a.	-0.27	n.a.	-0.63	-0.07	0.48	n.a.	-0.63	-0.06	0.40	n.a.	-0.63	-0.08	0.56	n.a.
<b>Total</b>	<b>m<sup>3</sup> WRME</b>	<b>n.a.</b>	<b>n.a.</b>	<b>n.a.</b>	<b>n.a.</b>	<b>2.90</b>	<b>n.a.</b>	<b>2.77</b>	<b>3.88</b>	<b>5.01</b>	<b>+3.0</b>	<b>2.77</b>	<b>3.42</b>	<b>4.14</b>	<b>+2.0</b>	<b>2.77</b>	<b>4.24</b>	<b>5.87</b>	<b>+3.8</b>

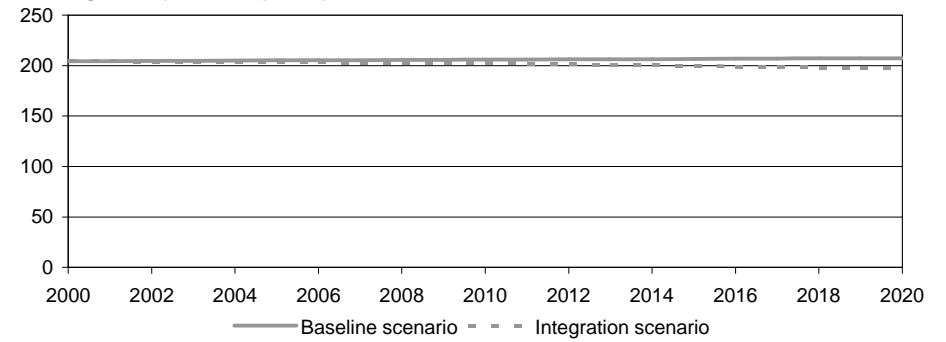
Please read the introduction for information about data sources, definitions and measurement units

**Important forest sector parameters - historical trends and forecasts: Lithuania**

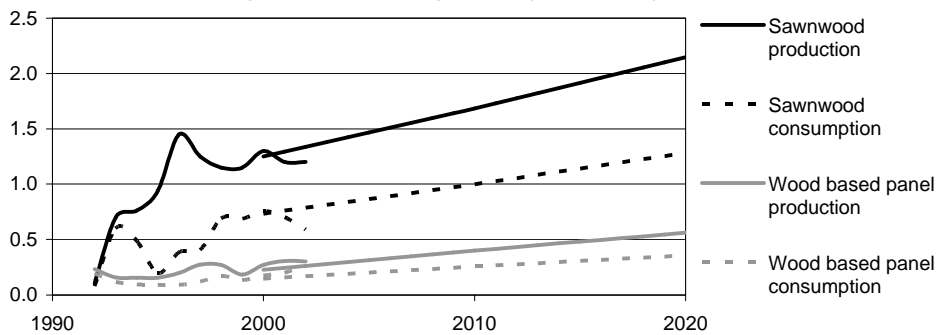
**Ratio of fellings to increment (in percent)**



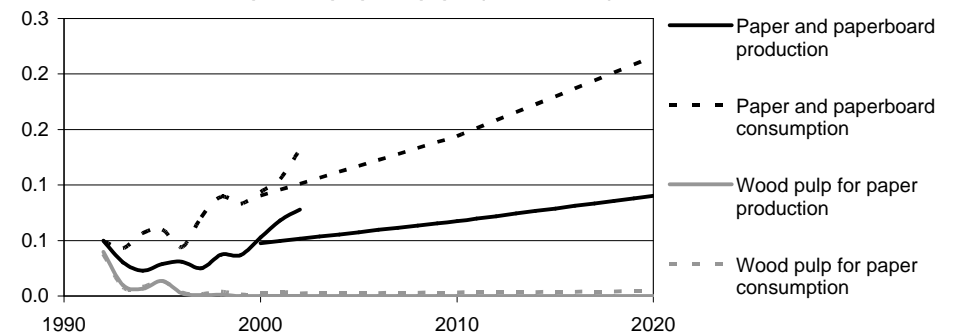
**Growing stock (in m<sup>3</sup> o.b. per ha)**



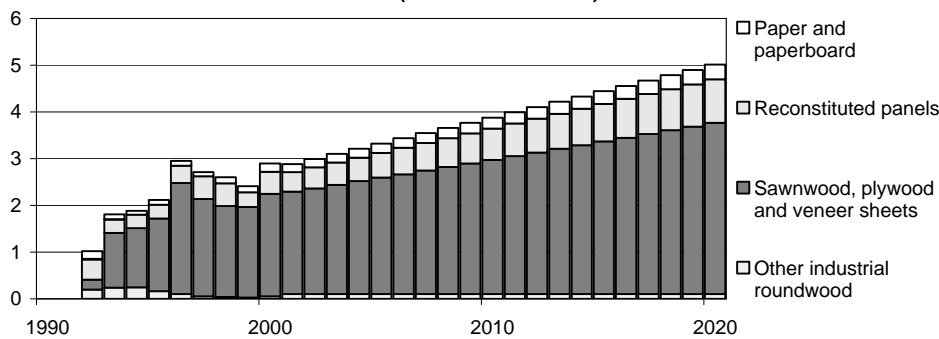
**Production and consumption of solid wood products (in million m<sup>3</sup>)**



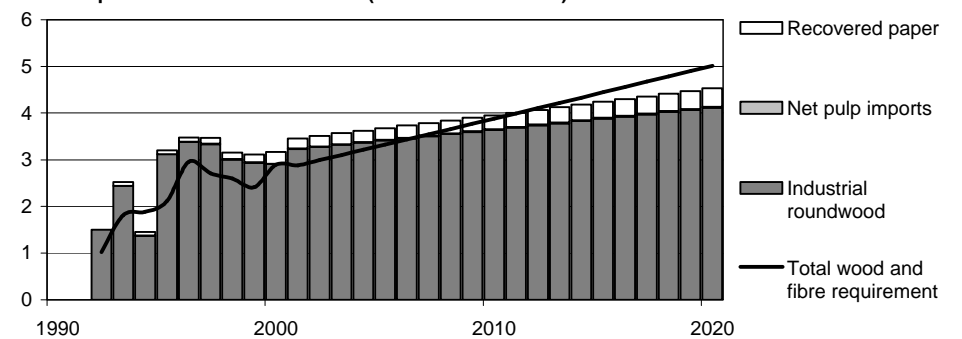
**Production and consumption of pulp and paper (in million MT)**



**Derived demand for wood raw materials (in million m<sup>3</sup> WRME)**



**Consumption of wood raw materials (in million m<sup>3</sup> WRME)**



Please read the introduction for information about data sources, definitions and measurement units

## Important forest sector parameters - historical trends and forecasts:

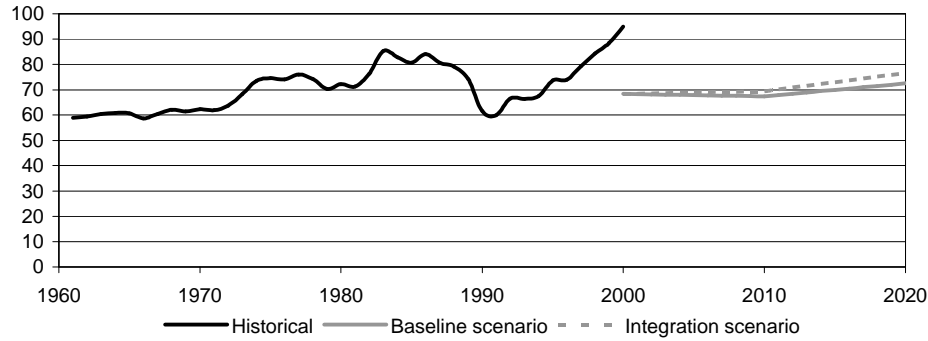
Poland

Parameter	Units (millions)	Historical statistics					Annual change (in %)	Baseline scenario			Annual change (in %)	Conservation scenario			Annual change (in %)	Integration scenario			Annual change (in %)
		Year						Year				Year				Year			
		1961	1970	1980	1990	2000		2000	2010	2020		2000	2010	2020		2000	2010	2020	
<b>Forest resources</b>																			
Forest area	ha	7.57	8.24	8.31	8.35	8.30	+0.2	8.40	8.60	8.76	+0.2	n.a.	n.a.	n.a.	n.a.	8.40	8.60	8.77	+0.2
Growing stock	m <sup>3</sup> o.b.	1,184.45	1,319.00	1,437.00	1,632.00	1,771.00	+1.0	1,792.42	2,067.68	2,274.62	+1.2	n.a.	n.a.	n.a.	n.a.	1,792.42	2,055.07	2,238.61	+1.1
Increment	m <sup>3</sup> o.b.	39.27	42.60	41.40	41.10	39.40	+0.0	53.73	58.87	60.40	+0.6	n.a.	n.a.	n.a.	n.a.	53.73	58.95	60.84	+0.6
Fellings	m <sup>3</sup> o.b.	23.11	26.53	29.90	25.30	37.37	+1.2	36.71	39.68	43.79	+0.9	36.71	38.11	40.74	+0.5	36.71	40.93	46.59	+1.2
<b>Product production</b>																			
Roundwood	m <sup>3</sup> u.b.	16.10	18.47	20.82	17.62	26.03	+1.2	25.56	27.63	30.49	+0.9	25.56	26.54	28.37	+0.5	25.56	28.50	32.44	+1.2
Sawnwood	m <sup>3</sup>	6.63	7.17	7.39	4.13	4.26	-1.1	4.14	5.07	6.18	+2.0	4.14	5.01	6.05	+1.9	4.14	5.12	6.29	+2.1
Wood based panels	m <sup>3</sup>	0.41	1.04	2.02	1.40	4.62	+6.4	4.34	5.89	7.35	+2.7	4.34	5.65	7.00	+2.4	4.34	6.08	7.64	+2.9
Wood pulp used for paper production	MT	0.04	0.05	0.06	0.07	0.10	+2.1	0.93	1.67	2.55	+5.1	0.93	1.37	1.86	+3.5	0.93	1.92	3.21	+6.4
Paper and paperboard	MT	0.69	0.96	1.28	1.06	1.93	+2.7	1.91	3.59	5.82	+5.7	1.91	2.93	4.23	+4.1	1.91	4.12	7.36	+7.0
Recovered paper	MT	n.a.	0.24	0.48	0.43	0.78	+4.0	0.83	2.08	3.84	+7.9	0.83	1.68	2.75	+6.1	0.83	2.41	4.91	+9.3
<b>Product consumption</b>																			
Roundwood	m <sup>3</sup> u.b.	15.94	18.17	19.76	17.21	26.41	+1.3	26.94	31.25	37.18	+1.6	26.94	29.27	33.07	+1.0	26.94	32.85	41.08	+2.1
Sawnwood	m <sup>3</sup>	6.17	6.59	6.86	3.94	3.54	-1.4	3.42	4.51	5.74	+2.6	3.42	4.10	4.88	+1.8	3.42	4.83	6.49	+3.3
Wood based panels	m <sup>3</sup>	0.39	1.11	2.15	1.05	3.97	+6.1	3.69	5.79	7.09	+3.3	3.69	5.03	5.85	+2.3	3.69	6.39	8.15	+4.0
Wood pulp used for paper production	MT	0.49	0.69	0.86	0.75	1.23	+2.4	1.15	1.86	2.55	+4.0	1.15	1.53	1.86	+2.4	1.15	2.13	3.21	+5.3
Paper and paperboard	MT	0.67	1.08	1.43	0.92	2.41	+3.3	2.38	4.62	7.67	+6.0	2.38	3.74	5.49	+4.3	2.38	5.35	9.83	+7.3
Recovered paper	MT	n.a.	0.24	0.47	0.44	0.75	+3.9	0.72	1.71	3.37	+8.0	0.72	1.40	2.46	+6.4	0.72	1.96	4.25	+9.3
<b>Derived demand for wood raw materials</b>																			
Other industrial roundwood	m <sup>3</sup> WRME	3.18	3.60	3.32	2.14	1.89	-1.3	2.35	2.15	2.00	-0.8	2.35	2.15	2.00	-0.8	2.35	2.15	2.00	-0.8
Sawnwood, plywood and veneer sheets	m <sup>3</sup> WRME	10.33	11.16	11.53	6.44	7.03	-1.0	6.75	8.16	9.83	+1.9	6.75	8.06	9.65	+1.8	6.75	8.23	9.98	+2.0
Reconstituted panels	m <sup>3</sup> WRME	0.36	1.46	3.16	2.26	7.73	+8.2	7.32	10.09	12.67	+2.8	7.32	9.65	12.05	+2.5	7.32	10.43	13.21	+3.0
Net pulp exports	m <sup>3</sup> WRME	0.00	0.00	0.00	0.00	0.00	n.a.	0.00	0.00	0.00	n.a.	0.00	0.00	0.00	n.a.	0.00	0.00	0.00	n.a.
Paper and paperboard	m <sup>3</sup> WRME	3.01	4.26	5.73	4.79	8.51	+2.7	8.30	15.48	25.12	+5.7	8.30	12.70	18.35	+4.0	8.30	17.75	31.67	+6.9
<b>Total</b>	<b>m<sup>3</sup> WRME</b>	<b>16.87</b>	<b>20.48</b>	<b>23.74</b>	<b>15.63</b>	<b>25.16</b>	<b>+1.0</b>	<b>24.71</b>	<b>35.87</b>	<b>49.62</b>	<b>+3.5</b>	<b>24.71</b>	<b>32.57</b>	<b>42.05</b>	<b>+2.7</b>	<b>24.71</b>	<b>38.55</b>	<b>56.86</b>	<b>+4.3</b>
<b>Consumption of wood raw materials</b>																			
Industrial roundwood	m <sup>3</sup> WRME	14.38	16.40	18.00	15.14	24.90	+1.4	24.89	29.94	36.30	+1.9	24.89	27.96	32.19	+1.3	24.89	31.54	40.20	+2.4
Recovered paper	m <sup>3</sup> WRME	n.a.	0.91	1.79	1.65	2.86	+3.9	2.72	6.49	12.79	+8.0	2.72	5.33	9.35	+6.4	2.72	7.44	16.13	+9.3
Net pulp imports	m <sup>3</sup> WRME	0.28	0.75	1.20	0.31	1.17	+3.7	1.13	0.96	0.00	n.a.	1.13	0.79	0.00	n.a.	1.13	1.10	0.00	n.a.
Other	m <sup>3</sup> WRME	2.21	2.42	2.75	-1.48	-3.77	n.a.	-4.04	-1.52	0.52	n.a.	-4.04	-1.51	0.51	n.a.	-4.04	-1.53	0.53	n.a.
<b>Total</b>	<b>m<sup>3</sup> WRME</b>	<b>16.87</b>	<b>20.48</b>	<b>23.74</b>	<b>15.63</b>	<b>25.16</b>	<b>+1.0</b>	<b>24.71</b>	<b>35.87</b>	<b>49.62</b>	<b>+3.5</b>	<b>24.71</b>	<b>32.57</b>	<b>42.05</b>	<b>+2.7</b>	<b>24.71</b>	<b>38.55</b>	<b>56.86</b>	<b>+4.3</b>

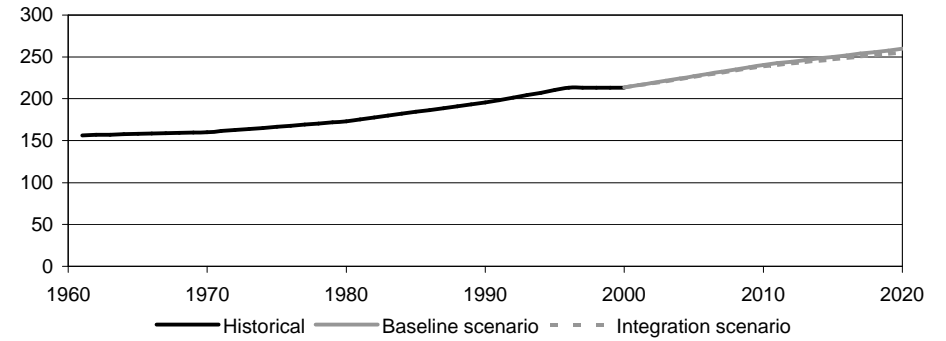
Please read the introduction for information about data sources, definitions and measurement units

Important forest sector parameters - historical trends and forecasts: Poland

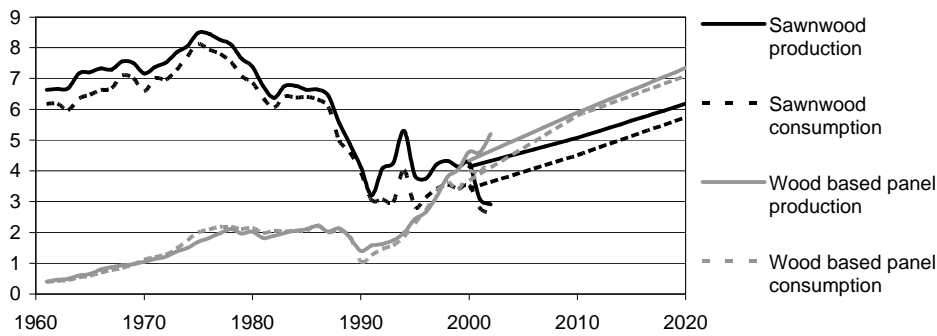
Ratio of fellings to increment (in percent)



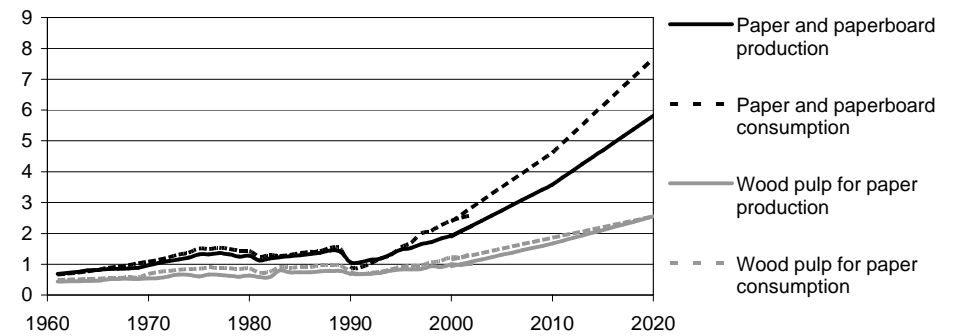
Growing stock (in m<sup>3</sup> o.b. per ha)



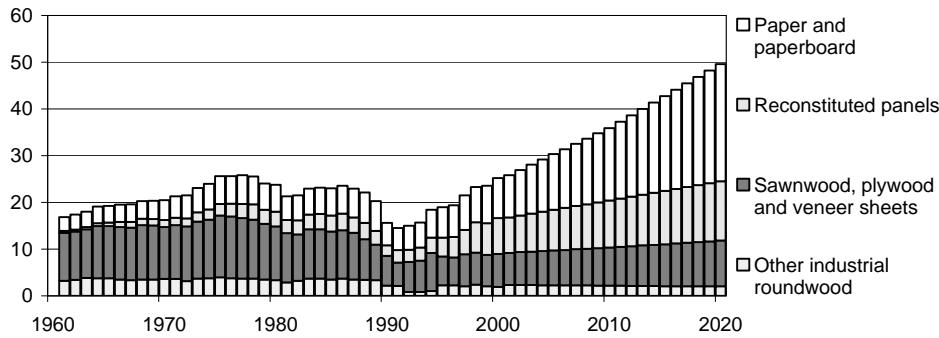
Production and consumption of solid wood products (in million m<sup>3</sup>)



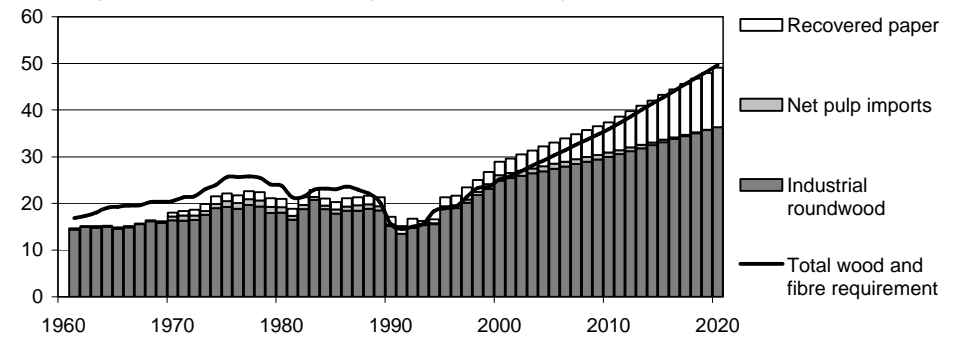
Production and consumption of pulp and paper (in million MT)



Derived demand for wood raw materials (in million m<sup>3</sup> WRME)



Consumption of wood raw materials (in million m<sup>3</sup> WRME)



Please read the introduction for information about data sources, definitions and measurement units

Important forest sector parameters - historical trends and forecasts:

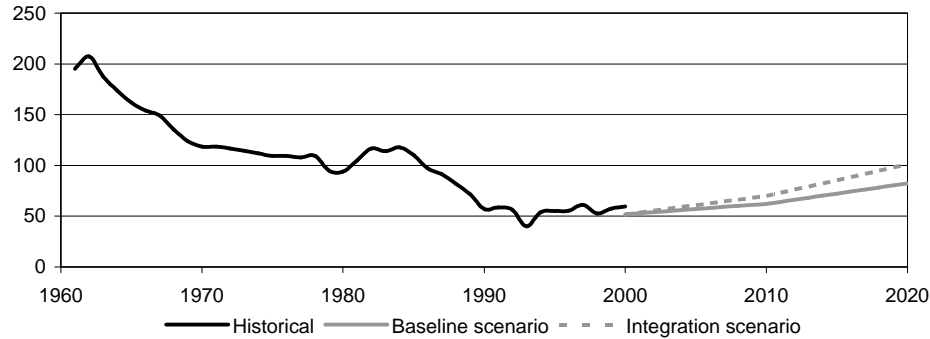
Romania

Parameter	Units (millions)	Historical statistics					Annual change (in %)	Baseline scenario			Annual change (in %)	Conservation scenario			Annual change (in %)	Integration scenario			Annual change (in %)
		Year						Year				Year				Year			
		1961	1970	1980	1990	2000		2000	2010	2020		2000	2010	2020		2000	2010	2020	
<b>Forest resources</b>																			
Forest area	ha	5.20	5.90	5.86	5.41	6.68	+0.6	5.57	5.39	5.25	-0.3	n.a.	n.a.	n.a.	n.a.	5.57	5.43	5.32	-0.2
Growing stock	m <sup>3</sup> o.b.	938.00	1,268.00	1,268.00	1,202.00	1,202.00	+0.6	1,518.90	1,786.46	1,922.82	+1.2	n.a.	n.a.	n.a.	n.a.	1,518.90	1,772.84	1,882.84	+1.1
Increment	m <sup>3</sup> o.b.	14.45	26.90	26.90	31.60	31.60	+2.0	38.63	36.51	32.19	-0.9	n.a.	n.a.	n.a.	n.a.	38.63	36.72	33.02	-0.8
Fellings	m <sup>3</sup> o.b.	28.21	31.84	25.24	18.01	18.78	-1.0	20.02	22.64	26.49	+1.4	20.02	19.13	21.68	+0.4	20.02	25.64	33.31	+2.6
<b>Product production</b>																			
Roundwood	m <sup>3</sup> u.b.	19.75	22.29	17.67	12.61	13.15	-1.0	14.01	15.85	18.55	+1.4	14.01	13.39	15.17	+0.4	14.01	17.95	23.32	+2.6
Sawnwood	m <sup>3</sup>	4.43	5.44	4.68	2.91	3.40	-0.7	3.24	4.16	5.17	+2.4	3.24	3.56	4.02	+1.1	3.24	4.63	6.11	+3.2
Wood based panels	m <sup>3</sup>	0.20	0.87	1.61	1.09	0.31	+1.1	0.31	0.65	1.06	+6.3	0.31	0.43	0.58	+3.1	0.31	0.85	1.55	+8.3
Wood pulp used for paper production	MT	0.02	0.04	0.07	0.04	0.03	+1.6	0.24	0.35	0.49	+3.7	0.24	0.26	0.32	+1.4	0.24	0.43	0.66	+5.2
Paper and paperboard	MT	0.20	0.52	0.82	0.55	0.34	+1.4	0.32	0.52	0.75	+4.3	0.32	0.39	0.48	+2.0	0.32	0.63	1.01	+5.9
Recovered paper	MT	n.a.	0.14	0.18	0.20	0.10	-1.2	0.09	0.21	0.41	+8.0	0.09	0.15	0.25	+5.4	0.09	0.26	0.57	+9.7
<b>Product consumption</b>																			
Roundwood	m <sup>3</sup> u.b.	18.64	21.47	17.97	13.02	12.63	-1.0	14.60	15.66	17.19	+0.8	14.60	13.93	13.93	-0.2	14.60	17.07	20.11	+1.6
Sawnwood	m <sup>3</sup>	2.85	3.42	3.68	2.64	1.08	-2.5	1.04	1.29	1.56	+2.0	1.04	1.13	1.25	+0.9	1.04	1.42	1.81	+2.8
Wood based panels	m <sup>3</sup>	0.15	0.66	1.17	1.05	0.38	+2.3	0.39	0.76	1.23	+5.9	0.39	0.52	0.70	+3.0	0.39	0.96	1.74	+7.8
Wood pulp used for paper production	MT	0.15	0.37	0.74	0.48	0.27	+1.4	0.23	0.33	0.47	+3.7	0.23	0.25	0.30	+1.4	0.23	0.41	0.63	+5.2
Paper and paperboard	MT	0.20	0.47	0.69	0.46	0.37	+1.6	0.35	0.60	0.91	+4.8	0.35	0.44	0.56	+2.3	0.35	0.75	1.26	+6.6
Recovered paper	MT	n.a.	0.14	0.18	0.20	0.10	-1.2	0.12	0.22	0.33	+5.1	0.12	0.17	0.21	+2.8	0.12	0.27	0.45	+6.7
<b>Derived demand for wood raw materials</b>																			
Other industrial roundwood	m <sup>3</sup> WRME	3.03	4.17	2.05	2.61	2.32	-0.7	3.20	3.05	3.00	-0.3	3.20	3.05	3.00	-0.3	3.20	3.05	3.00	-0.3
Sawnwood, plywood and veneer sheets	m <sup>3</sup> WRME	7.70	9.77	8.57	5.22	5.86	-0.7	5.60	7.37	9.28	+2.6	5.60	6.21	7.07	+1.2	5.60	8.26	11.12	+3.5
Reconstituted panels	m <sup>3</sup> WRME	0.10	1.00	2.25	1.70	0.40	+3.6	0.42	0.89	1.49	+6.6	0.42	0.57	0.79	+3.3	0.42	1.17	2.22	+8.7
Net pulp exports	m <sup>3</sup> WRME	0.04	0.00	0.00	0.00	0.18	+4.1	0.08	0.12	0.16	+3.7	0.08	0.09	0.10	+1.4	0.08	0.14	0.22	+5.2
Paper and paperboard	m <sup>3</sup> WRME	0.69	1.82	2.86	1.91	1.16	+1.3	1.11	1.79	2.59	+4.3	1.11	1.34	1.66	+2.1	1.11	2.18	3.49	+5.9
<b>Total</b>	<b>m<sup>3</sup> WRME</b>	<b>11.56</b>	<b>16.76</b>	<b>15.73</b>	<b>11.45</b>	<b>9.92</b>	<b>-0.4</b>	<b>10.41</b>	<b>13.21</b>	<b>16.52</b>	<b>+2.3</b>	<b>10.41</b>	<b>11.27</b>	<b>12.63</b>	<b>+1.0</b>	<b>10.41</b>	<b>14.80</b>	<b>20.04</b>	<b>+3.3</b>
<b>Consumption of wood raw materials</b>																			
Industrial roundwood	m <sup>3</sup> WRME	11.18	15.63	14.54	11.14	9.61	-0.4	10.62	12.38	14.49	+1.6	10.62	10.64	11.24	+0.3	10.62	13.79	17.42	+2.5
Recovered paper	m <sup>3</sup> WRME	n.a.	0.53	0.70	0.75	0.36	-1.2	0.46	0.84	1.26	+5.1	0.46	0.63	0.81	+2.8	0.46	1.02	1.70	+6.7
Net pulp imports	m <sup>3</sup> WRME	0.00	0.09	0.45	0.44	0.00	n.a.	0.00	0.00	0.00	n.a.	0.00	0.00	0.00	n.a.	0.00	0.00	0.00	n.a.
Other	m <sup>3</sup> WRME	0.38	0.51	0.04	-0.88	-0.05	n.a.	-0.67	0.00	0.76	n.a.	-0.67	0.00	0.58	n.a.	-0.67	0.00	0.92	n.a.
<b>Total</b>	<b>m<sup>3</sup> WRME</b>	<b>11.56</b>	<b>16.76</b>	<b>15.73</b>	<b>11.45</b>	<b>9.92</b>	<b>-0.4</b>	<b>10.41</b>	<b>13.21</b>	<b>16.52</b>	<b>+2.3</b>	<b>10.41</b>	<b>11.27</b>	<b>12.63</b>	<b>+1.0</b>	<b>10.41</b>	<b>14.80</b>	<b>20.04</b>	<b>+3.3</b>

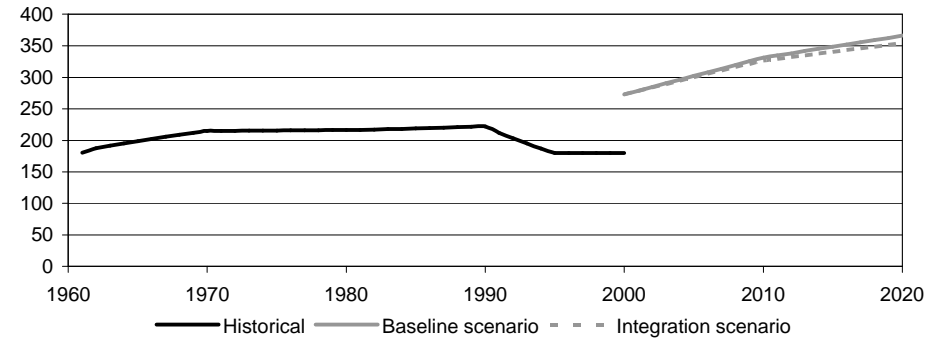
Please read the introduction for information about data sources, definitions and measurement units

**Important forest sector parameters - historical trends and forecasts: Romania**

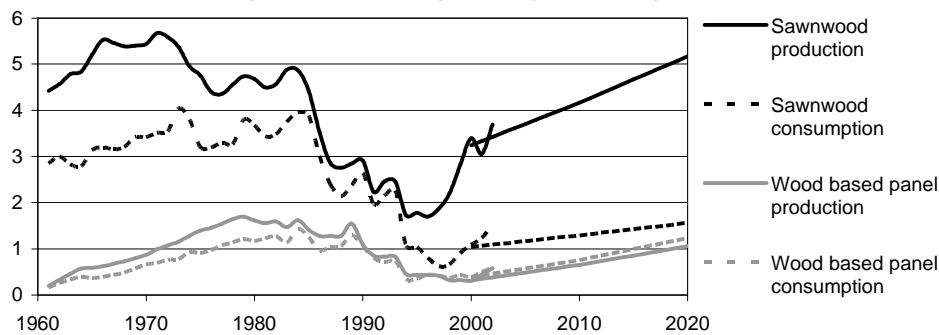
**Ratio of fellings to increment (in percent)**



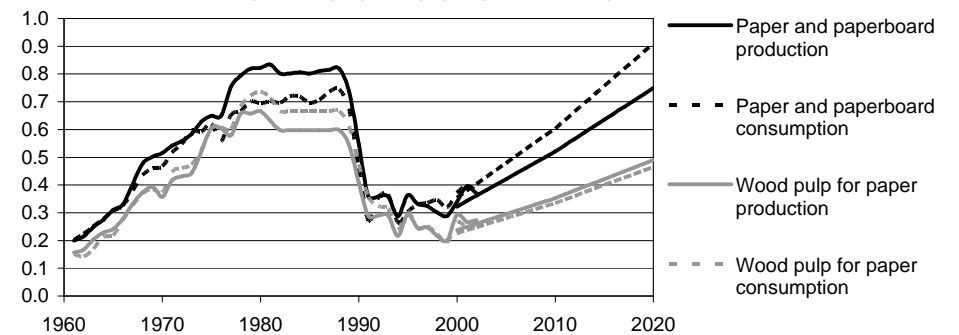
**Growing stock (in m<sup>3</sup> o.b. per ha)**



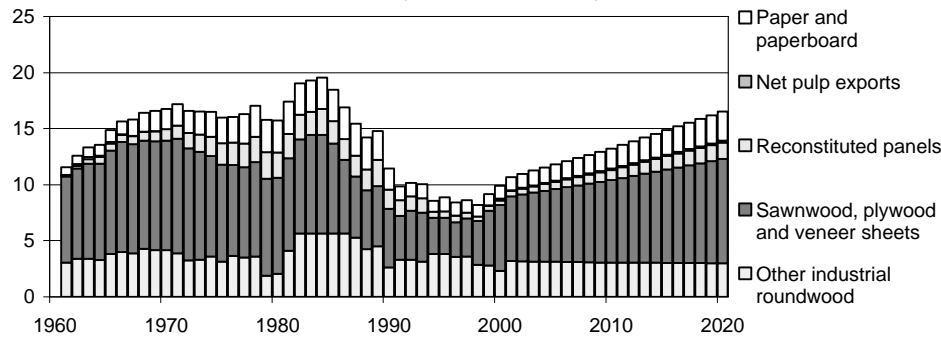
**Production and consumption of solid wood products (in million m<sup>3</sup>)**



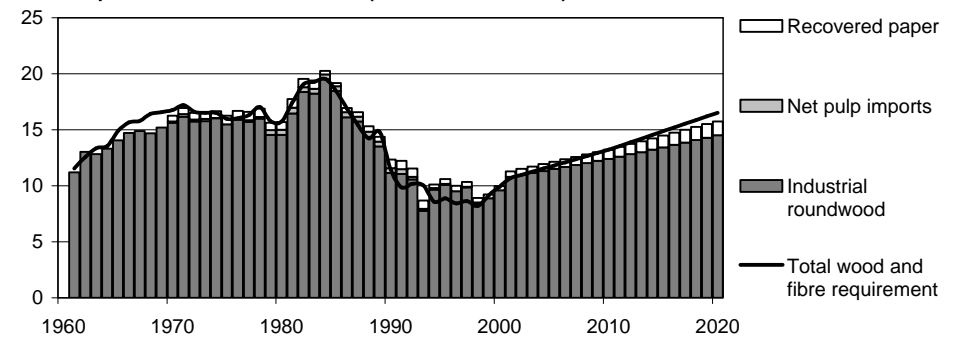
**Production and consumption of pulp and paper (in million MT)**



**Derived demand for wood raw materials (in million m<sup>3</sup> WRME)**



**Consumption of wood raw materials (in million m<sup>3</sup> WRME)**



Please read the introduction for information about data sources, definitions and measurement units

## Important forest sector parameters - historical trends and forecasts:

## Serbia and Montenegro

Parameter	Units (millions)	Historical statistics					Annual change (in %)	Baseline scenario			Annual change (in %)	Conservation scenario			Annual change (in %)	Integration scenario			Annual change (in %)
		Year						Year				Year				Year			
		1961	1970	1980	1990	2000		2000	2010	2020		2000	2010	2020		2000	2010	2020	
<b>Forest resources</b>																			
Forest area	ha	n.a.	n.a.	n.a.	n.a.	2.36	n.a.	2.36	2.29	2.23	-0.3	n.a.	n.a.	n.a.	n.a.	2.36	2.30	2.26	-0.2
Growing stock	m <sup>3</sup> o.b.	n.a.	n.a.	n.a.	n.a.	273.18	n.a.	273.18	312.74	330.56	+1.0	n.a.	n.a.	n.a.	n.a.	273.18	310.45	324.49	+0.9
Increment	m <sup>3</sup> o.b.	n.a.	n.a.	n.a.	n.a.	5.83	n.a.	5.83	4.49	3.48	-2.6	n.a.	n.a.	n.a.	n.a.	5.83	4.51	3.56	-2.4
Fellings	m <sup>3</sup> o.b.	n.a.	n.a.	n.a.	n.a.	3.39	n.a.	3.39	3.85	4.60	+1.5	3.39	3.39	3.51	+0.2	3.39	4.28	5.55	+2.5
<b>Product production</b>																			
Roundwood	m <sup>3</sup> u.b.	n.a.	n.a.	n.a.	n.a.	3.35	n.a.	2.70	3.07	3.67	+1.5	2.70	2.70	2.80	+0.2	2.70	3.41	4.43	+2.5
Sawnwood	m <sup>3</sup>	n.a.	n.a.	n.a.	n.a.	0.50	n.a.	0.41	0.52	0.69	+2.6	0.41	0.44	0.51	+1.1	0.41	0.59	0.83	+3.6
Wood based panels	m <sup>3</sup>	n.a.	n.a.	n.a.	n.a.	0.12	n.a.	0.18	0.35	0.55	+5.7	0.18	0.23	0.29	+2.5	0.18	0.47	0.79	+7.7
Wood pulp used for paper production	MT	n.a.	n.a.	n.a.	n.a.	0.01	n.a.	0.07	0.10	0.15	+3.5	0.07	0.08	0.09	+0.9	0.07	0.13	0.20	+5.1
Paper and paperboard	MT	n.a.	n.a.	n.a.	n.a.	0.18	n.a.	0.16	0.24	0.39	+4.5	0.16	0.19	0.24	+1.9	0.16	0.29	0.52	+6.0
Recovered paper	MT	n.a.	n.a.	n.a.	n.a.	0.00	n.a.	0.03	0.08	0.20	+10.3	0.03	0.07	0.12	+7.6	0.03	0.10	0.27	+11.9
<b>Product consumption</b>																			
Roundwood	m <sup>3</sup> u.b.	n.a.	n.a.	n.a.	n.a.	3.34	n.a.	2.52	2.83	3.34	+1.4	2.52	2.51	2.59	+0.1	2.52	3.12	4.00	+2.3
Sawnwood	m <sup>3</sup>	n.a.	n.a.	n.a.	n.a.	0.63	n.a.	0.65	0.90	1.27	+3.4	0.65	0.73	0.87	+1.4	0.65	1.05	1.58	+4.5
Wood based panels	m <sup>3</sup>	n.a.	n.a.	n.a.	n.a.	0.16	n.a.	0.21	0.40	0.63	+5.7	0.21	0.26	0.34	+2.4	0.21	0.54	0.90	+7.6
Wood pulp used for paper production	MT	n.a.	n.a.	n.a.	n.a.	0.14	n.a.	0.07	0.10	0.14	+3.5	0.07	0.08	0.09	+0.9	0.07	0.12	0.20	+5.1
Paper and paperboard	MT	n.a.	n.a.	n.a.	n.a.	0.25	n.a.	0.29	0.42	0.67	+4.4	0.29	0.33	0.41	+1.9	0.29	0.51	0.90	+5.9
Recovered paper	MT	n.a.	n.a.	n.a.	n.a.	0.00	n.a.	0.01	0.02	0.08	+14.0	0.01	0.02	0.05	+11.1	0.01	0.03	0.11	+15.7
<b>Derived demand for wood raw materials</b>																			
Other industrial roundwood	m <sup>3</sup> WRME	n.a.	n.a.	n.a.	n.a.	0.13	n.a.	0.20	0.13	0.08	-4.8	0.20	0.13	0.08	-4.8	0.20	0.13	0.08	-4.8
Sawnwood, plywood and veneer sheets	m <sup>3</sup> WRME	n.a.	n.a.	n.a.	n.a.	1.00	n.a.	0.90	1.31	1.80	+3.6	0.90	1.01	1.19	+1.4	0.90	1.58	2.33	+4.9
Reconstituted panels	m <sup>3</sup> WRME	n.a.	n.a.	n.a.	n.a.	0.10	n.a.	0.16	0.28	0.44	+5.3	0.16	0.19	0.25	+2.3	0.16	0.36	0.62	+7.1
Net pulp exports	m <sup>3</sup> WRME	n.a.	n.a.	n.a.	n.a.	0.00	n.a.	0.00	0.00	0.00	+3.5	0.00	0.00	0.00	+0.9	0.00	0.00	0.00	+5.1
Paper and paperboard	m <sup>3</sup> WRME	n.a.	n.a.	n.a.	n.a.	0.60	n.a.	0.57	0.86	1.40	+4.6	0.57	0.66	0.84	+2.0	0.57	1.04	1.90	+6.2
<b>Total</b>	<b>m<sup>3</sup> WRME</b>	<b>n.a.</b>	<b>n.a.</b>	<b>n.a.</b>	<b>n.a.</b>	<b>1.82</b>	<b>n.a.</b>	<b>1.82</b>	<b>2.58</b>	<b>3.72</b>	<b>+3.6</b>	<b>1.82</b>	<b>2.00</b>	<b>2.35</b>	<b>+1.3</b>	<b>1.82</b>	<b>3.12</b>	<b>4.93</b>	<b>+5.1</b>
<b>Consumption of wood raw materials</b>																			
Industrial roundwood	m <sup>3</sup> WRME	n.a.	n.a.	n.a.	n.a.	1.56	n.a.	1.14	1.49	2.02	+2.9	1.14	1.17	1.28	+0.6	1.14	1.78	2.68	+4.4
Recovered paper	m <sup>3</sup> WRME	n.a.	n.a.	n.a.	n.a.	0.00	n.a.	0.02	0.09	0.31	+14.0	0.02	0.07	0.19	+11.1	0.02	0.11	0.42	+15.7
Net pulp imports	m <sup>3</sup> WRME	n.a.	n.a.	n.a.	n.a.	0.07	n.a.	0.00	0.00	0.00	n.a.	0.00	0.00	0.00	n.a.	0.00	0.00	0.00	n.a.
Other	m <sup>3</sup> WRME	n.a.	n.a.	n.a.	n.a.	0.20	n.a.	0.66	1.00	1.39	+3.8	0.66	0.76	0.89	+1.5	0.66	1.23	1.83	+5.3
<b>Total</b>	<b>m<sup>3</sup> WRME</b>	<b>n.a.</b>	<b>n.a.</b>	<b>n.a.</b>	<b>n.a.</b>	<b>1.82</b>	<b>n.a.</b>	<b>1.82</b>	<b>2.58</b>	<b>3.72</b>	<b>+3.6</b>	<b>1.82</b>	<b>2.00</b>	<b>2.35</b>	<b>+1.3</b>	<b>1.82</b>	<b>3.12</b>	<b>4.93</b>	<b>+5.1</b>

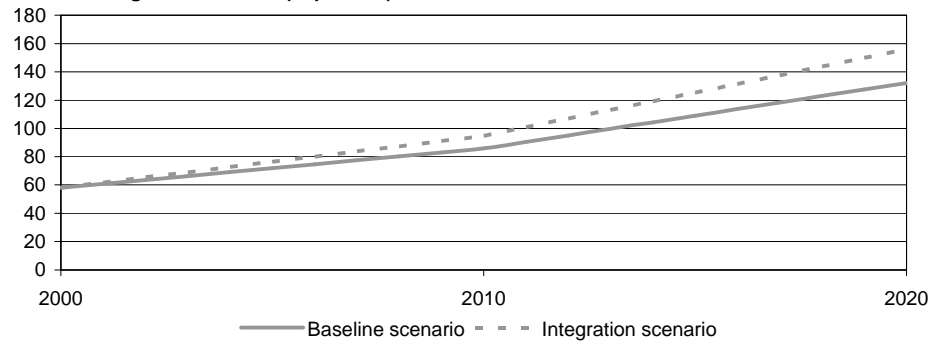
Please read the introduction for information about data sources, definitions and measurement units



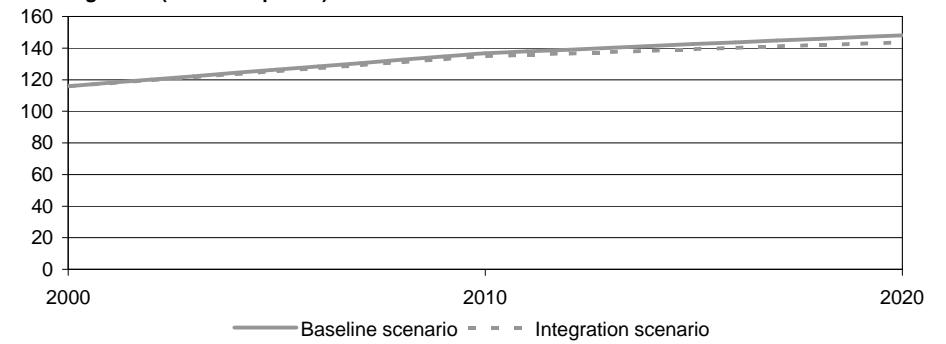
Important forest sector parameters - historical trends and forecasts:

Serbia and Montenegro

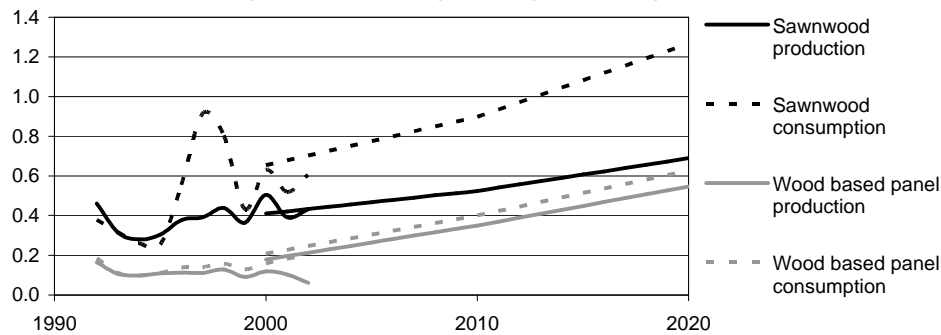
Ratio of fellings to increment (in percent)



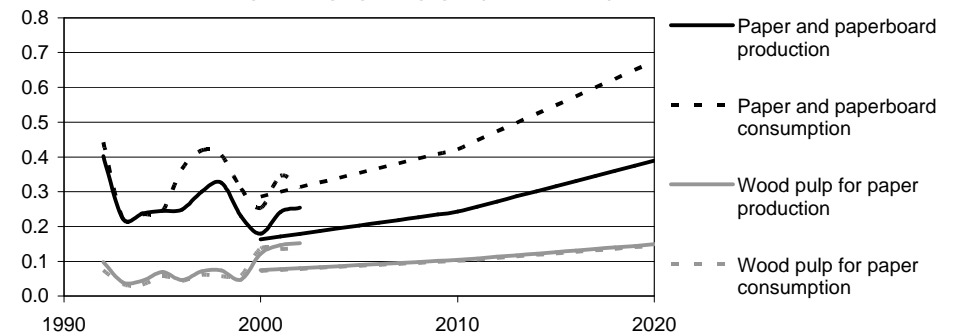
Growing stock (in m<sup>3</sup> o.b. per ha)



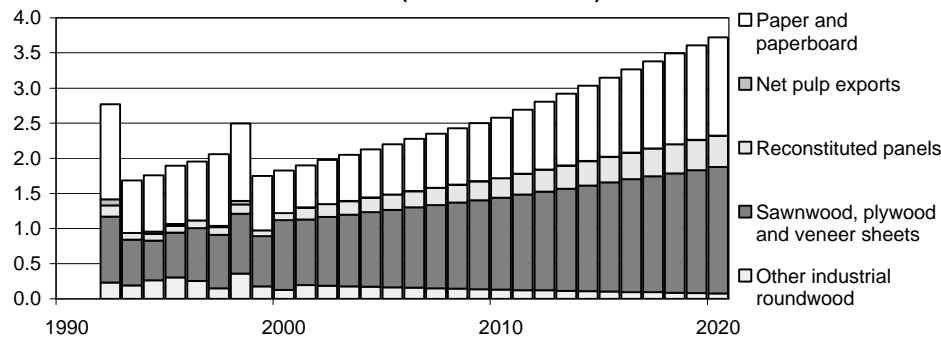
Production and consumption of solid wood products (in million m<sup>3</sup>)



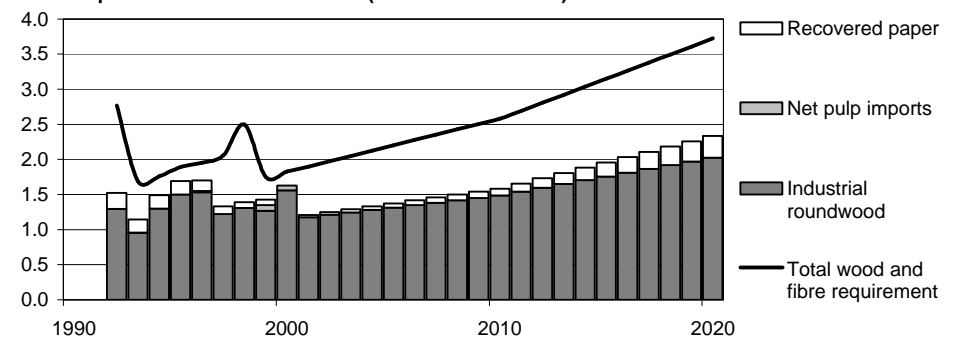
Production and consumption of pulp and paper (in million MT)



Derived demand for wood raw materials (in million m<sup>3</sup> WRME)



Consumption of wood raw materials (in million m<sup>3</sup> WRME)



Please read the introduction for information about data sources, definitions and measurement units

## Important forest sector parameters - historical trends and forecasts:

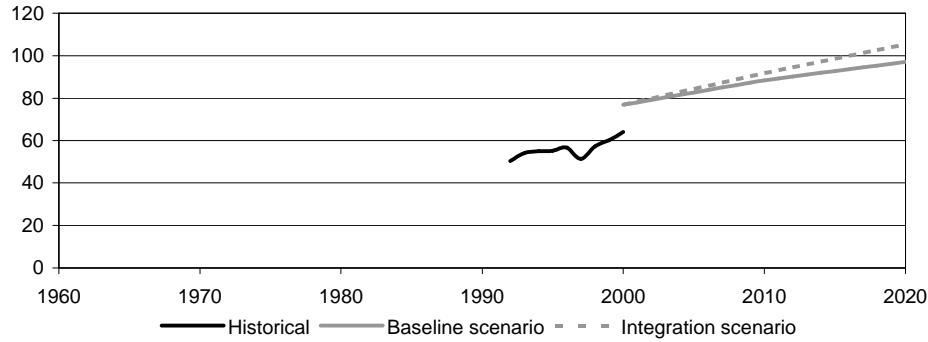
Slovakia

Parameter	Units (millions)	Historical statistics					Annual change (in %)	Baseline scenario			Annual change (in %)	Conservation scenario			Annual change (in %)	Integration scenario			Annual change (in %)
		Year						Year				Year				Year			
		1961	1970	1980	1990	2000		2000	2010	2020		2000	2010	2020		2000	2010	2020	
<b>Forest resources</b>																			
Forest area	ha	1.79	1.92	1.95	1.99	2.02	+0.3	1.71	1.72	1.72	+0.0	n.a.	n.a.	n.a.	n.a.	1.71	1.69	1.66	-0.2
Growing stock	m <sup>3</sup> o.b.	264.60	315.00	414.00	475.75	511.00	+1.7	386.97	408.26	402.84	+0.2	n.a.	n.a.	n.a.	n.a.	386.97	397.11	370.81	-0.2
Increment	m <sup>3</sup> o.b.	8.78	11.30	12.90	14.05	13.90	+1.2	11.76	11.42	11.33	-0.2	n.a.	n.a.	n.a.	n.a.	11.76	11.45	11.21	-0.2
Fellings	m <sup>3</sup> o.b.	n.a.	n.a.	n.a.	n.a.	1.71	n.a.	9.04	10.11	11.00	+1.0	9.04	9.60	10.11	+0.6	9.04	10.51	11.81	+1.3
<b>Product production</b>																			
Roundwood	m <sup>3</sup> u.b.	n.a.	n.a.	n.a.	n.a.	6.16	n.a.	6.27	7.00	7.63	+1.0	6.27	6.65	7.01	+0.6	6.27	7.28	8.19	+1.3
Sawnwood	m <sup>3</sup>	n.a.	n.a.	n.a.	n.a.	1.27	n.a.	0.77	0.95	1.15	+2.0	0.77	0.88	1.00	+1.3	0.77	1.01	1.30	+2.6
Wood based panels	m <sup>3</sup>	n.a.	n.a.	n.a.	n.a.	0.13	n.a.	0.34	0.53	0.64	+3.2	0.34	0.46	0.52	+2.2	0.34	0.59	0.74	+4.0
Wood pulp used for paper production	MT	n.a.	n.a.	n.a.	n.a.	0.06	n.a.	0.40	0.49	0.60	+2.1	0.40	0.43	0.49	+1.0	0.40	0.54	0.72	+3.0
Paper and paperboard	MT	n.a.	n.a.	n.a.	n.a.	0.93	n.a.	0.63	0.92	1.22	+3.3	0.63	0.81	0.99	+2.3	0.63	1.00	1.44	+4.2
Recovered paper	MT	n.a.	n.a.	n.a.	n.a.	0.15	n.a.	0.11	0.28	0.48	+7.8	0.11	0.24	0.39	+6.6	0.11	0.31	0.57	+8.8
<b>Product consumption</b>																			
Roundwood	m <sup>3</sup> u.b.	n.a.	n.a.	n.a.	n.a.	4.68	n.a.	4.32	5.29	6.23	+1.8	4.32	4.82	5.32	+1.0	4.32	5.68	7.10	+2.5
Sawnwood	m <sup>3</sup>	n.a.	n.a.	n.a.	n.a.	0.40	n.a.	0.29	0.36	0.43	+1.9	0.29	0.33	0.37	+1.2	0.29	0.38	0.48	+2.5
Wood based panels	m <sup>3</sup>	n.a.	n.a.	n.a.	n.a.	0.22	n.a.	0.46	0.72	0.86	+3.2	0.46	0.63	0.71	+2.1	0.46	0.80	1.00	+3.9
Wood pulp used for paper production	MT	n.a.	n.a.	n.a.	n.a.	0.61	n.a.	0.38	0.47	0.58	+2.1	0.38	0.41	0.47	+1.0	0.38	0.52	0.69	+3.0
Paper and paperboard	MT	n.a.	n.a.	n.a.	n.a.	0.82	n.a.	0.53	0.79	1.07	+3.5	0.53	0.69	0.86	+2.4	0.53	0.87	1.27	+4.4
Recovered paper	MT	n.a.	n.a.	n.a.	n.a.	0.28	n.a.	0.16	0.35	0.52	+5.9	0.16	0.31	0.42	+4.8	0.16	0.38	0.62	+6.9
<b>Derived demand for wood raw materials</b>																			
Other industrial roundwood	m <sup>3</sup> WRME	n.a.	n.a.	n.a.	n.a.	0.20	n.a.	0.20	0.20	0.20	0.0	0.20	0.20	0.20	0.0	0.20	0.20	0.20	0.0
Sawnwood, plywood and veneer sheets	m <sup>3</sup> WRME	n.a.	n.a.	n.a.	n.a.	2.40	n.a.	1.51	1.93	2.32	+2.2	1.51	1.76	2.00	+1.4	1.51	2.07	2.62	+2.8
Reconstituted panels	m <sup>3</sup> WRME	n.a.	n.a.	n.a.	n.a.	0.12	n.a.	0.43	0.65	0.79	+3.1	0.43	0.57	0.65	+2.1	0.43	0.72	0.91	+3.9
Net pulp exports	m <sup>3</sup> WRME	n.a.	n.a.	n.a.	n.a.	0.02	n.a.	0.07	0.08	0.10	+2.1	0.07	0.07	0.08	+1.0	0.07	0.09	0.12	+3.0
Paper and paperboard	m <sup>3</sup> WRME	n.a.	n.a.	n.a.	n.a.	3.26	n.a.	2.31	3.39	4.54	+3.4	2.31	2.98	3.67	+2.3	2.31	3.72	5.39	+4.3
<b>Total</b>	<b>m<sup>3</sup> WRME</b>	<b>n.a.</b>	<b>n.a.</b>	<b>n.a.</b>	<b>n.a.</b>	<b>6.00</b>	<b>n.a.</b>	<b>4.52</b>	<b>6.25</b>	<b>7.95</b>	<b>+2.9</b>	<b>4.52</b>	<b>5.59</b>	<b>6.59</b>	<b>+1.9</b>	<b>4.52</b>	<b>6.80</b>	<b>9.25</b>	<b>+3.6</b>
<b>Consumption of wood raw materials</b>																			
Industrial roundwood	m <sup>3</sup> WRME	n.a.	n.a.	n.a.	n.a.	4.47	n.a.	3.59	4.55	5.50	+2.2	3.59	4.07	4.59	+1.2	3.59	4.94	6.37	+2.9
Recovered paper	m <sup>3</sup> WRME	n.a.	n.a.	n.a.	n.a.	1.06	n.a.	0.63	1.32	1.99	+5.9	0.63	1.16	1.61	+4.8	0.63	1.45	2.36	+6.9
Net pulp imports	m <sup>3</sup> WRME	n.a.	n.a.	n.a.	n.a.	0.00	n.a.	0.00	0.00	0.00	n.a.	0.00	0.00	0.00	n.a.	0.00	0.00	0.00	n.a.
Other	m <sup>3</sup> WRME	n.a.	n.a.	n.a.	n.a.	0.47	n.a.	0.30	0.39	0.46	+2.2	0.30	0.35	0.40	+1.4	0.30	0.41	0.53	+2.9
<b>Total</b>	<b>m<sup>3</sup> WRME</b>	<b>n.a.</b>	<b>n.a.</b>	<b>n.a.</b>	<b>n.a.</b>	<b>6.00</b>	<b>n.a.</b>	<b>4.52</b>	<b>6.25</b>	<b>7.95</b>	<b>+2.9</b>	<b>4.52</b>	<b>5.59</b>	<b>6.59</b>	<b>+1.9</b>	<b>4.52</b>	<b>6.80</b>	<b>9.25</b>	<b>+3.6</b>

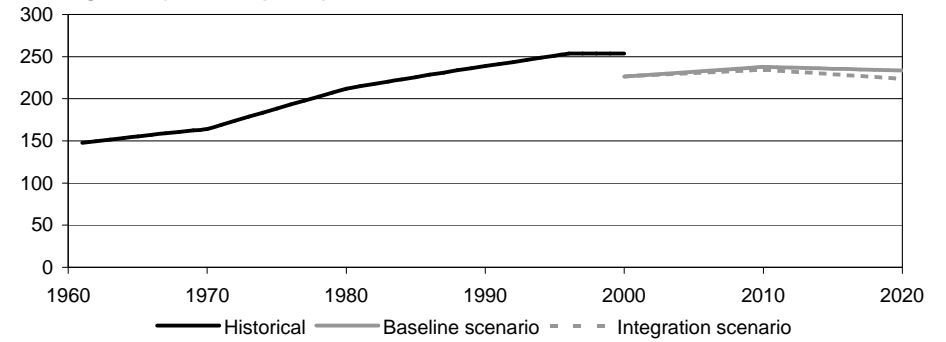
Please read the introduction for information about data sources, definitions and measurement units

**Important forest sector parameters - historical trends and forecasts: Slovakia**

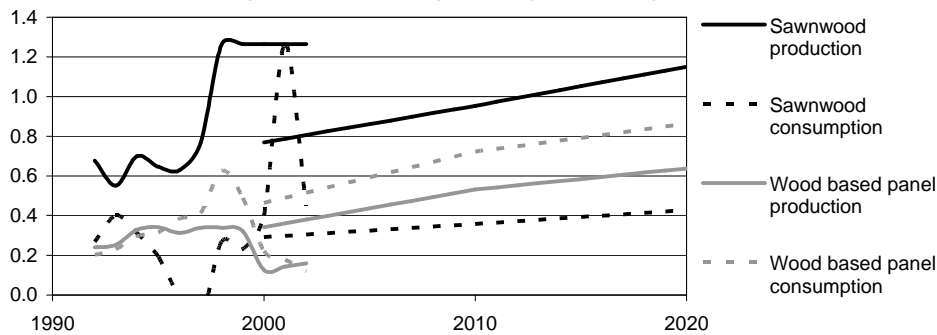
**Ratio of fellings to increment (in percent)**



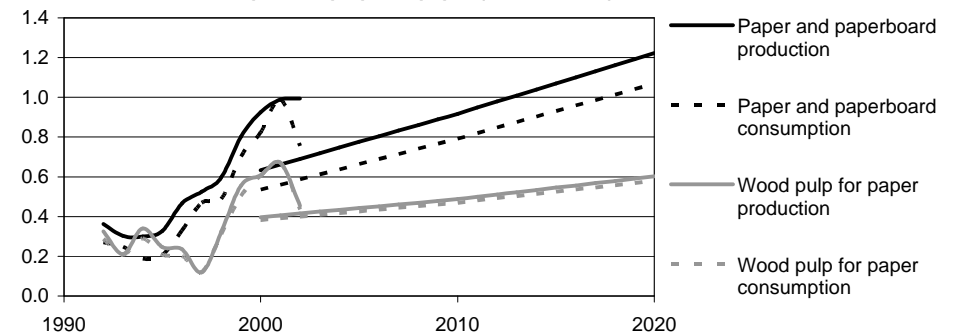
**Growing stock (in m<sup>3</sup> o.b. per ha)**



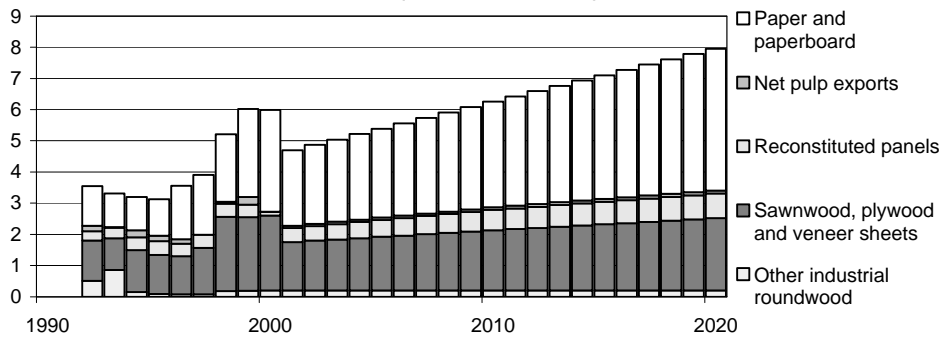
**Production and consumption of solid wood products (in million m<sup>3</sup>)**



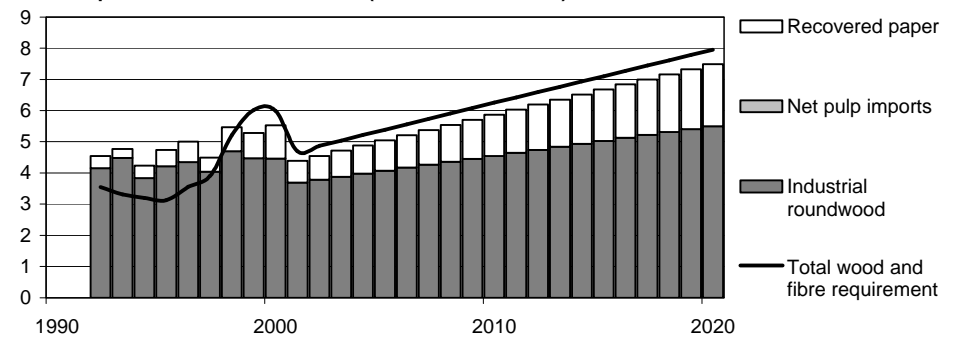
**Production and consumption of pulp and paper (in million MT)**



**Derived demand for wood raw materials (in million m<sup>3</sup> WRME)**



**Consumption of wood raw materials (in million m<sup>3</sup> WRME)**



Please read the introduction for information about data sources, definitions and measurement units

## Important forest sector parameters - historical trends and forecasts:

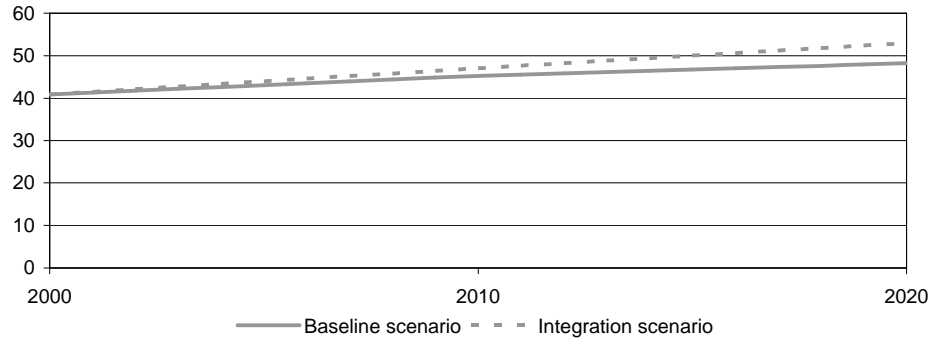
Slovenia

Parameter	Units (millions)	Historical statistics					Annual change (in %)	Baseline scenario			Annual change (in %)	Conservation scenario			Annual change (in %)	Integration scenario			Annual change (in %)
		Year						Year				Year				Year			
		1961	1970	1980	1990	2000		2000	2010	2020		2000	2010	2020		2000	2010	2020	
<b>Forest resources</b>																			
Forest area	ha	n.a.	n.a.	n.a.	n.a.	1.04	n.a.	1.04	1.06	1.07	+0.2	n.a.	n.a.	n.a.	n.a.	1.04	1.07	1.08	+0.2
Growing stock	m <sup>3</sup> o.b.	n.a.	n.a.	n.a.	n.a.	328.37	n.a.	328.37	373.76	405.04	+1.1	n.a.	n.a.	n.a.	n.a.	328.37	370.93	396.50	+0.9
Increment	m <sup>3</sup> o.b.	n.a.	n.a.	n.a.	n.a.	6.82	n.a.	6.82	6.79	6.87	+0.0	n.a.	n.a.	n.a.	n.a.	6.82	6.85	6.93	+0.1
Fellings	m <sup>3</sup> o.b.	n.a.	n.a.	n.a.	n.a.	2.79	n.a.	2.79	3.08	3.31	+0.9	2.79	2.94	2.99	+0.4	2.79	3.22	3.67	+1.4
<b>Product production</b>																			
Roundwood	m <sup>3</sup> u.b.	n.a.	n.a.	n.a.	n.a.	2.25	n.a.	2.43	2.67	2.88	+0.9	2.43	2.55	2.60	+0.4	2.43	2.80	3.19	+1.4
Sawnwood	m <sup>3</sup>	n.a.	n.a.	n.a.	n.a.	0.44	n.a.	0.46	0.54	0.61	+1.4	0.46	0.51	0.55	+0.8	0.46	0.56	0.67	+1.9
Wood based panels	m <sup>3</sup>	n.a.	n.a.	n.a.	n.a.	0.54	n.a.	0.42	0.57	0.68	+2.4	0.42	0.53	0.59	+1.7	0.42	0.61	0.78	+3.1
Wood pulp used for paper production	MT	n.a.	n.a.	n.a.	n.a.	0.02	n.a.	0.13	0.16	0.20	+2.3	0.13	0.15	0.17	+1.5	0.13	0.18	0.24	+3.1
Paper and paperboard	MT	n.a.	n.a.	n.a.	n.a.	0.41	n.a.	0.41	0.54	0.69	+2.6	0.41	0.50	0.59	+1.8	0.41	0.58	0.80	+3.4
Recovered paper	MT	n.a.	n.a.	n.a.	n.a.	0.07	n.a.	0.08	0.11	0.15	+3.4	0.08	0.11	0.13	+2.7	0.08	0.12	0.17	+4.1
<b>Product consumption</b>																			
Roundwood	m <sup>3</sup> u.b.	n.a.	n.a.	n.a.	n.a.	2.44	n.a.	2.46	2.71	2.92	+0.9	2.46	2.59	2.64	+0.4	2.46	2.84	3.24	+1.4
Sawnwood	m <sup>3</sup>	n.a.	n.a.	n.a.	n.a.	0.29	n.a.	0.32	0.36	0.40	+1.2	0.32	0.34	0.37	+0.7	0.32	0.38	0.44	+1.7
Wood based panels	m <sup>3</sup>	n.a.	n.a.	n.a.	n.a.	0.48	n.a.	0.37	0.50	0.60	+2.4	0.37	0.46	0.52	+1.7	0.37	0.54	0.69	+3.1
Wood pulp used for paper production	MT	n.a.	n.a.	n.a.	n.a.	0.28	n.a.	0.23	0.29	0.36	+2.3	0.23	0.27	0.31	+1.5	0.23	0.32	0.43	+3.1
Paper and paperboard	MT	n.a.	n.a.	n.a.	n.a.	0.17	n.a.	0.19	0.24	0.29	+2.2	0.19	0.22	0.26	+1.5	0.19	0.25	0.34	+2.9
Recovered paper	MT	n.a.	n.a.	n.a.	n.a.	0.22	n.a.	0.18	0.25	0.33	+3.1	0.18	0.23	0.28	+2.3	0.18	0.27	0.39	+3.9
<b>Derived demand for wood raw materials</b>																			
Other industrial roundwood	m <sup>3</sup> WRME	n.a.	n.a.	n.a.	n.a.	0.21	n.a.	0.24	0.19	0.16	-2.0	0.24	0.19	0.16	-2.0	0.24	0.19	0.16	-2.0
Sawnwood, plywood and veneer sheets	m <sup>3</sup> WRME	n.a.	n.a.	n.a.	n.a.	0.93	n.a.	1.00	1.21	1.39	+1.6	1.00	1.14	1.24	+1.1	1.00	1.29	1.55	+2.2
Reconstituted panels	m <sup>3</sup> WRME	n.a.	n.a.	n.a.	n.a.	0.71	n.a.	0.53	0.69	0.83	+2.3	0.53	0.65	0.72	+1.6	0.53	0.75	0.95	+3.0
Net pulp exports	m <sup>3</sup> WRME	n.a.	n.a.	n.a.	n.a.	0.00	n.a.	0.00	0.00	0.00	n.a.	0.00	0.00	0.00	n.a.	0.00	0.00	0.00	n.a.
Paper and paperboard	m <sup>3</sup> WRME	n.a.	n.a.	n.a.	n.a.	1.51	n.a.	1.52	2.00	2.57	+2.7	1.52	1.86	2.19	+1.8	1.52	2.15	3.02	+3.5
<b>Total</b>	<b>m<sup>3</sup> WRME</b>	<b>n.a.</b>	<b>n.a.</b>	<b>n.a.</b>	<b>n.a.</b>	<b>3.35</b>	<b>n.a.</b>	<b>3.29</b>	<b>4.10</b>	<b>4.94</b>	<b>+2.1</b>	<b>3.29</b>	<b>3.84</b>	<b>4.31</b>	<b>+1.4</b>	<b>3.29</b>	<b>4.37</b>	<b>5.68</b>	<b>+2.8</b>
<b>Consumption of wood raw materials</b>																			
Industrial roundwood	m <sup>3</sup> WRME	n.a.	n.a.	n.a.	n.a.	1.97	n.a.	1.80	2.14	2.46	+1.6	1.80	2.02	2.18	+1.0	1.80	2.27	2.78	+2.2
Recovered paper	m <sup>3</sup> WRME	n.a.	n.a.	n.a.	n.a.	0.84	n.a.	0.68	0.94	1.25	+3.1	0.68	0.87	1.07	+2.3	0.68	1.01	1.47	+3.9
Net pulp imports	m <sup>3</sup> WRME	n.a.	n.a.	n.a.	n.a.	0.55	n.a.	0.43	0.55	0.68	+2.3	0.43	0.51	0.58	+1.5	0.43	0.59	0.80	+3.1
Other	m <sup>3</sup> WRME	n.a.	n.a.	n.a.	n.a.	-0.02	n.a.	0.37	0.47	0.55	+1.9	0.37	0.44	0.48	+1.3	0.37	0.50	0.62	+2.6
<b>Total</b>	<b>m<sup>3</sup> WRME</b>	<b>n.a.</b>	<b>n.a.</b>	<b>n.a.</b>	<b>n.a.</b>	<b>3.35</b>	<b>n.a.</b>	<b>3.29</b>	<b>4.10</b>	<b>4.94</b>	<b>+2.1</b>	<b>3.29</b>	<b>3.84</b>	<b>4.31</b>	<b>+1.4</b>	<b>3.29</b>	<b>4.37</b>	<b>5.68</b>	<b>+2.8</b>

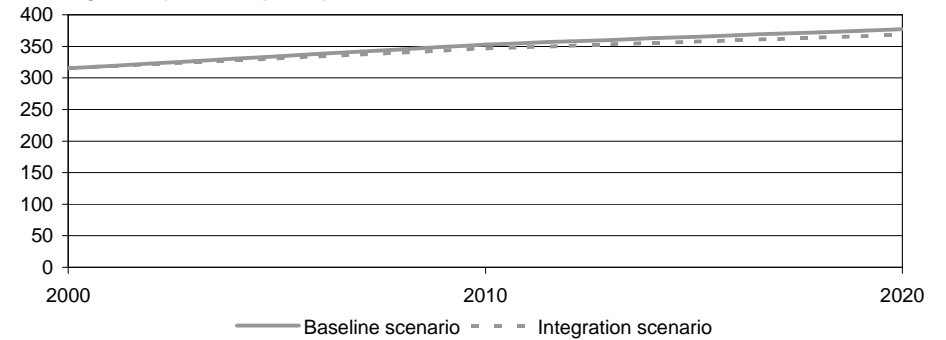
Please read the introduction for information about data sources, definitions and measurement units

Important forest sector parameters - historical trends and forecasts: **Slovenia**

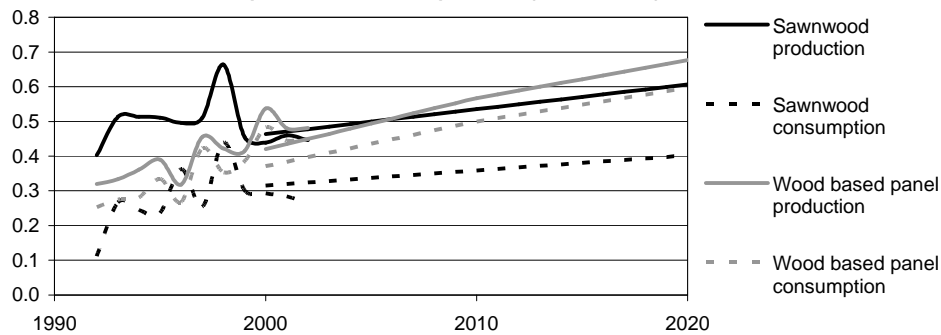
Ratio of fellings to increment (in percent)



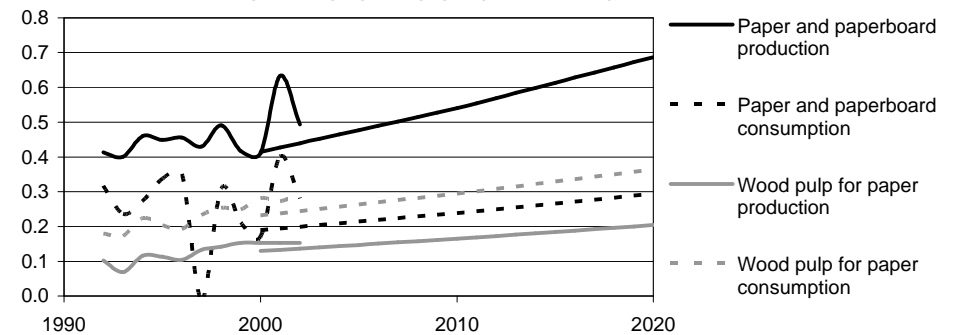
Growing stock (in m<sup>3</sup> o.b. per ha)



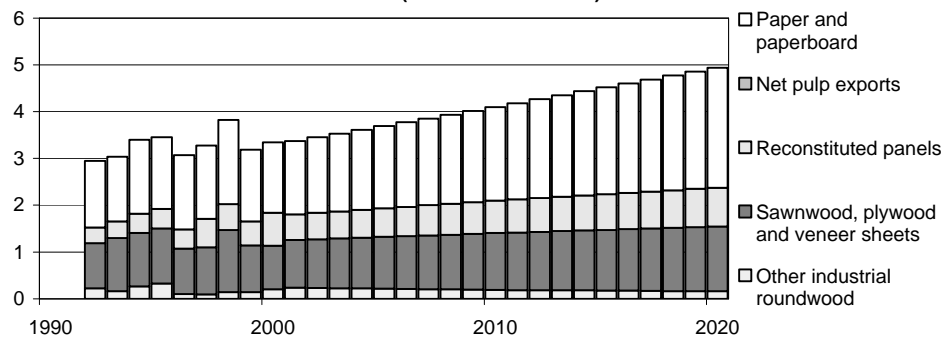
Production and consumption of solid wood products (in million m<sup>3</sup>)



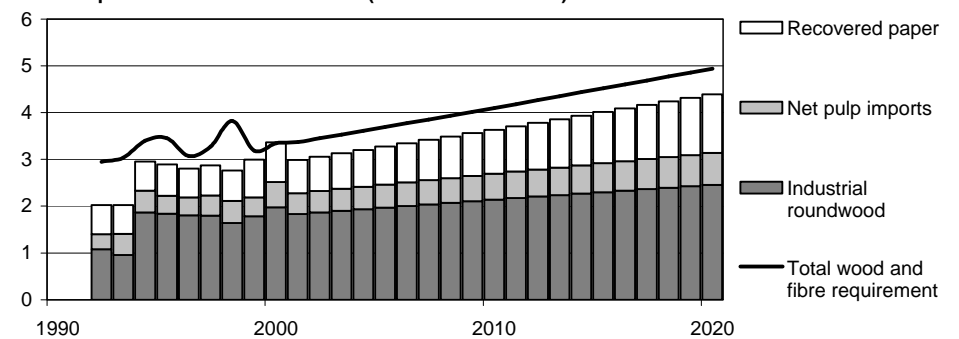
Production and consumption of pulp and paper (in million MT)



Derived demand for wood raw materials (in million m<sup>3</sup> WRME)



Consumption of wood raw materials (in million m<sup>3</sup> WRME)



Please read the introduction for information about data sources, definitions and measurement units

Important forest sector parameters - historical trends and forecasts:

The former Yugoslav Republic of Macedonia

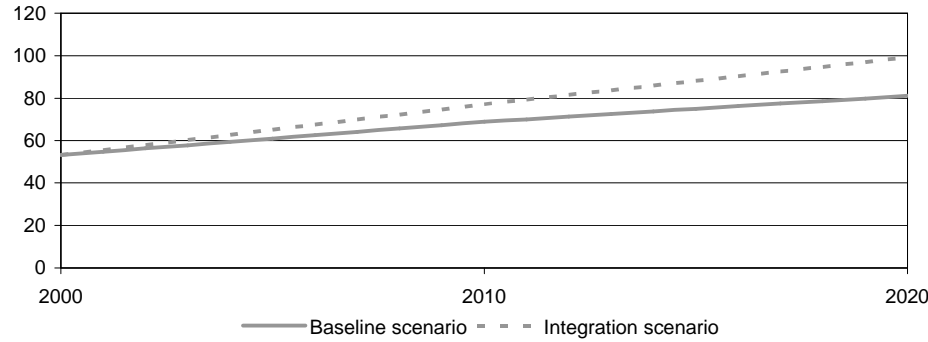
Parameter	Units (millions)	Historical statistics					Annual change (in %)	Baseline scenario			Annual change (in %)	Conservation scenario			Annual change (in %)	Integration scenario			Annual change (in %)
		Year						Year				Year				Year			
		1961	1970	1980	1990	2000		2000	2010	2020		2000	2010	2020		2000	2010	2020	
<b>Forest resources</b>																			
Forest area	ha	n.a.	n.a.	n.a.	n.a.	0.75	n.a.	0.75	0.75	0.75	0.0	n.a.	n.a.	n.a.	n.a.	0.75	0.75	0.75	+0.1
Growing stock	m <sup>3</sup> o.b.	n.a.	n.a.	n.a.	n.a.	60.67	n.a.	60.67	61.98	61.14	+0.0	n.a.	n.a.	n.a.	n.a.	60.67	61.05	58.52	-0.2
Increment	m <sup>3</sup> o.b.	n.a.	n.a.	n.a.	n.a.	1.42	n.a.	1.42	1.33	1.39	-0.1	n.a.	n.a.	n.a.	n.a.	1.42	1.33	1.41	-0.0
Fellings	m <sup>3</sup> o.b.	n.a.	n.a.	n.a.	n.a.	0.75	n.a.	0.75	0.91	1.13	+2.0	0.75	0.78	0.82	+0.4	0.75	1.02	1.40	+3.1
<b>Product production</b>																			
Roundwood	m <sup>3</sup> u.b.	n.a.	n.a.	n.a.	n.a.	1.05	n.a.	0.68	0.83	1.02	+2.0	0.68	0.71	0.74	+0.4	0.68	0.93	1.27	+3.1
Sawnwood	m <sup>3</sup>	n.a.	n.a.	n.a.	n.a.	0.04	n.a.	0.04	0.05	0.06	+2.5	0.04	0.04	0.05	+1.1	0.04	0.05	0.07	+3.3
Wood based panels	m <sup>3</sup>	n.a.	n.a.	n.a.	n.a.	0.15	n.a.	0.15	0.27	0.38	+4.6	0.15	0.20	0.24	+2.2	0.15	0.33	0.49	+6.0
Wood pulp used for paper production	MT	n.a.	n.a.	n.a.	n.a.	0.00	n.a.	0.00	0.00	0.00	+4.8	0.00	0.00	0.00	+2.1	0.00	0.00	0.00	+6.4
Paper and paperboard	MT	n.a.	n.a.	n.a.	n.a.	0.02	n.a.	0.02	0.02	0.04	+4.9	0.02	0.02	0.02	+2.3	0.02	0.03	0.05	+6.4
Recovered paper	MT	n.a.	n.a.	n.a.	n.a.	0.00	n.a.	0.00	0.01	0.03	+14.3	0.00	0.01	0.02	+11.1	0.00	0.01	0.05	+16.2
<b>Product consumption</b>																			
Roundwood	m <sup>3</sup> u.b.	n.a.	n.a.	n.a.	n.a.	1.09	n.a.	0.78	0.92	1.05	+1.5	0.78	0.80	0.83	+0.3	0.78	1.01	1.23	+2.3
Sawnwood	m <sup>3</sup>	n.a.	n.a.	n.a.	n.a.	0.17	n.a.	0.09	0.13	0.18	+3.4	0.09	0.11	0.13	+1.6	0.09	0.15	0.23	+4.5
Wood based panels	m <sup>3</sup>	n.a.	n.a.	n.a.	n.a.	0.21	n.a.	0.19	0.34	0.47	+4.7	0.19	0.24	0.30	+2.3	0.19	0.42	0.62	+6.1
Wood pulp used for paper production	MT	n.a.	n.a.	n.a.	n.a.	0.00	n.a.	0.00	0.00	0.01	+4.8	0.00	0.00	0.00	+2.1	0.00	0.00	0.01	+6.4
Paper and paperboard	MT	n.a.	n.a.	n.a.	n.a.	0.05	n.a.	0.05	0.08	0.14	+5.4	0.05	0.06	0.08	+2.5	0.05	0.10	0.19	+7.2
Recovered paper	MT	n.a.	n.a.	n.a.	n.a.	0.00	n.a.	0.00	0.00	0.00	+7.4	0.00	0.00	0.00	+4.6	0.00	0.00	0.01	+9.0
<b>Derived demand for wood raw materials</b>																			
Other industrial roundwood	m <sup>3</sup> WRME	n.a.	n.a.	n.a.	n.a.	0.01	n.a.	0.01	0.01	0.01	0.0	0.01	0.01	0.01	0.0	0.01	0.01	0.01	0.0
Sawnwood, plywood and veneer sheets	m <sup>3</sup> WRME	n.a.	n.a.	n.a.	n.a.	0.06	n.a.	0.06	0.08	0.11	+2.6	0.06	0.07	0.08	+1.2	0.06	0.09	0.13	+3.5
Reconstituted panels	m <sup>3</sup> WRME	n.a.	n.a.	n.a.	n.a.	0.21	n.a.	0.21	0.38	0.53	+4.6	0.21	0.27	0.33	+2.2	0.21	0.46	0.68	+6.0
Net pulp exports	m <sup>3</sup> WRME	n.a.	n.a.	n.a.	n.a.	0.00	n.a.	0.00	0.00	0.00	n.a.	0.00	0.00	0.00	n.a.	0.00	0.00	0.00	n.a.
Paper and paperboard	m <sup>3</sup> WRME	n.a.	n.a.	n.a.	n.a.	0.06	n.a.	0.05	0.09	0.14	+5.0	0.05	0.07	0.09	+2.4	0.05	0.11	0.20	+6.6
<b>Total</b>	<b>m<sup>3</sup> WRME</b>	<b>n.a.</b>	<b>n.a.</b>	<b>n.a.</b>	<b>n.a.</b>	<b>0.34</b>	<b>n.a.</b>	<b>0.34</b>	<b>0.56</b>	<b>0.79</b>	<b>+4.3</b>	<b>0.34</b>	<b>0.42</b>	<b>0.51</b>	<b>+2.0</b>	<b>0.34</b>	<b>0.67</b>	<b>1.02</b>	<b>+5.6</b>
<b>Consumption of wood raw materials</b>																			
Industrial roundwood	m <sup>3</sup> WRME	n.a.	n.a.	n.a.	n.a.	0.18	n.a.	0.23	0.41	0.59	+4.7	0.23	0.30	0.36	+2.2	0.23	0.50	0.77	+6.1
Recovered paper	m <sup>3</sup> WRME	n.a.	n.a.	n.a.	n.a.	0.00	n.a.	0.00	0.01	0.02	+7.4	0.00	0.01	0.01	+4.6	0.00	0.01	0.02	+9.0
Net pulp imports	m <sup>3</sup> WRME	n.a.	n.a.	n.a.	n.a.	0.01	n.a.	0.01	0.01	0.02	+4.8	0.01	0.01	0.01	+2.1	0.01	0.02	0.03	+6.4
Other	m <sup>3</sup> WRME	n.a.	n.a.	n.a.	n.a.	0.15	n.a.	0.10	0.13	0.16	+2.7	0.10	0.11	0.12	+1.2	0.10	0.14	0.19	+3.6
<b>Total</b>	<b>m<sup>3</sup> WRME</b>	<b>n.a.</b>	<b>n.a.</b>	<b>n.a.</b>	<b>n.a.</b>	<b>0.34</b>	<b>n.a.</b>	<b>0.34</b>	<b>0.56</b>	<b>0.79</b>	<b>+4.3</b>	<b>0.34</b>	<b>0.42</b>	<b>0.51</b>	<b>+2.0</b>	<b>0.34</b>	<b>0.67</b>	<b>1.02</b>	<b>+5.6</b>

Please read the introduction for information about data sources, definitions and measurement units

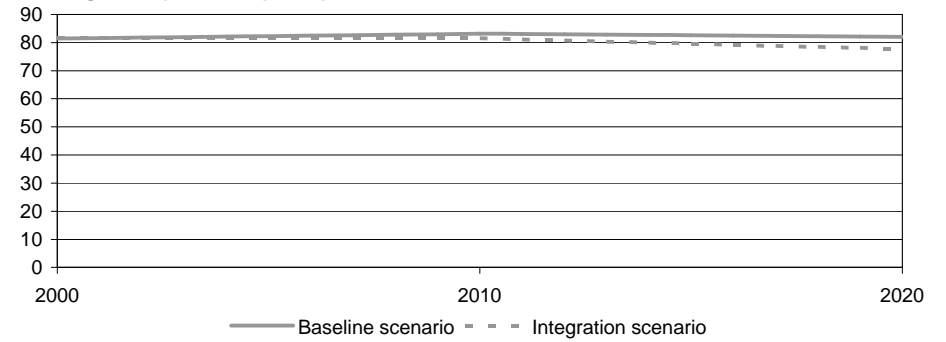
Important forest sector parameters - historical trends and forecasts:

The former Yugoslav Republic of Macedonia

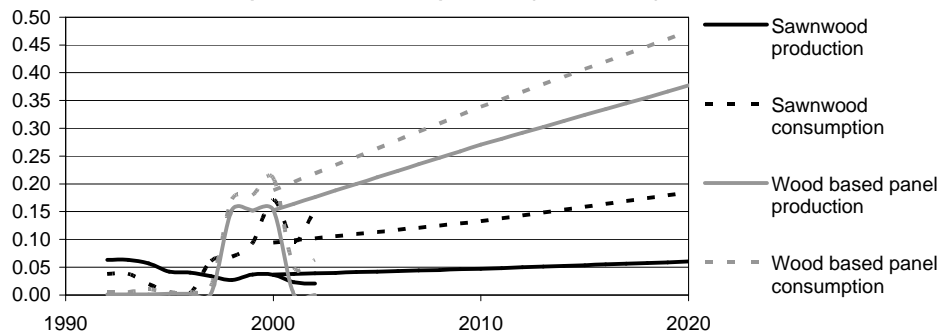
Ratio of fellings to increment (in percent)



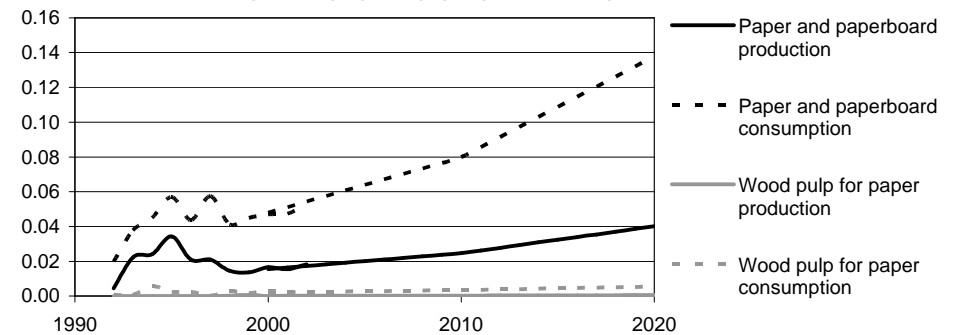
Growing stock (in m<sup>3</sup> o.b. per ha)



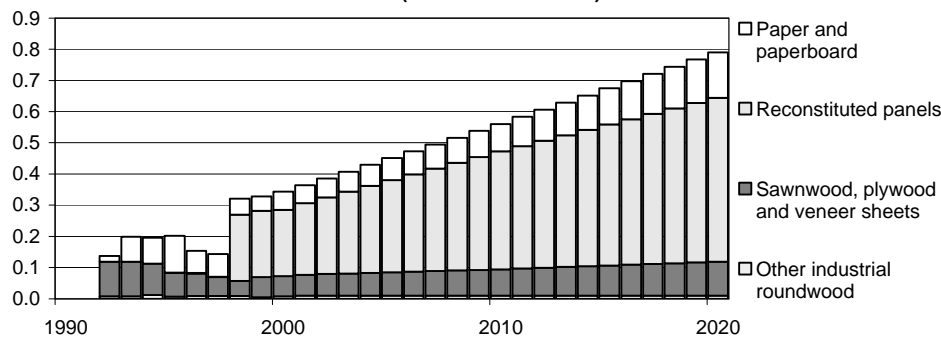
Production and consumption of solid wood products (in million m<sup>3</sup>)



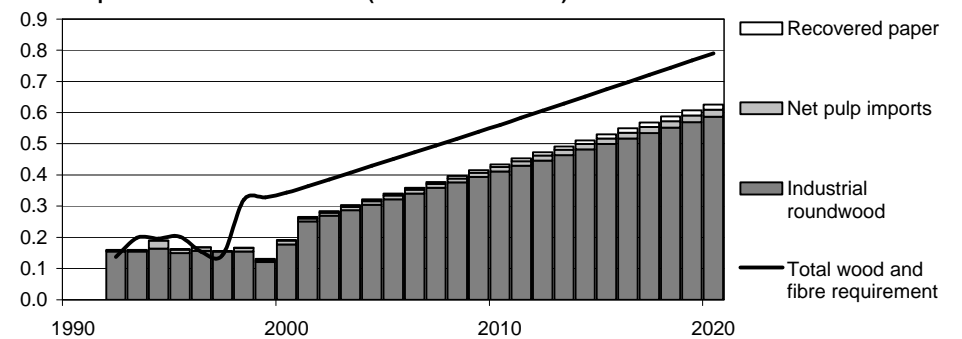
Production and consumption of pulp and paper (in million MT)



Derived demand for wood raw materials (in million m<sup>3</sup> WRME)



Consumption of wood raw materials (in million m<sup>3</sup> WRME)



Please read the introduction for information about data sources, definitions and measurement units

Important forest sector parameters - historical trends and forecasts:

Turkey

Parameter	Units (millions)	Historical statistics					Annual change (in %)	Baseline scenario			Annual change (in %)	Conservation scenario			Annual change (in %)	Integration scenario			Annual change (in %)
		Year						Year				Year				Year			
		1961	1970	1980	1990	2000	2000	2010	2020	2000	2010	2020	2000	2010	2020	2000	2010	2020	
<b>Forest resources</b>																			
Forest area	ha	8.73	8.73	8.71	8.66	8.65	-0.0	8.63	8.59	8.55	-0.0	n.a.	n.a.	n.a.	n.a.	8.63	8.75	8.83	+0.1
Growing stock	m <sup>3</sup> o.b.	1,032.00	1,032.00	1,030.00	1,085.00	1,196.00	+0.4	1,174.67	1,161.53	1,148.39	-0.1	n.a.	n.a.	n.a.	n.a.	1,174.67	1,129.96	1,061.70	-0.5
Increment	m <sup>3</sup> o.b.	30.90	30.90	30.20	31.80	34.30	+0.3	29.01	27.37	25.74	-0.6	n.a.	n.a.	n.a.	n.a.	29.01	27.30	25.62	-0.6
Fellings	m <sup>3</sup> o.b.	10.76	45.62	27.65	19.30	20.56	+1.7	23.25	21.80	22.25	-0.2	23.25	20.49	19.26	-0.9	23.25	22.74	24.63	+0.3
<b>Product production</b>																			
Roundwood	m <sup>3</sup> u.b.	8.78	37.24	22.58	15.76	15.94	+1.5	18.98	17.80	18.16	-0.2	18.98	16.73	15.72	-0.9	18.98	18.56	20.11	+0.3
Sawnwood	m <sup>3</sup>	0.76	2.33	4.65	4.92	5.53	+5.2	4.42	5.76	7.46	+2.7	4.42	5.01	5.70	+1.3	4.42	6.31	8.86	+3.5
Wood based panels	m <sup>3</sup>	0.04	0.17	0.45	0.78	2.37	+10.9	2.16	3.45	5.25	+4.5	2.16	2.77	3.51	+2.4	2.16	3.94	6.76	+5.9
Wood pulp used for paper production	MT	0.00	0.01	0.03	0.03	0.03	+5.4	0.26	0.42	0.76	+5.5	0.26	0.30	0.44	+2.7	0.26	0.50	1.04	+7.1
Paper and paperboard	MT	0.06	0.16	0.48	0.89	1.57	+8.6	1.48	3.01	5.47	+6.7	1.48	2.20	3.18	+3.9	1.48	3.60	7.41	+8.4
Recovered paper	MT	n.a.	0.04	0.16	0.16	0.87	+11.0	0.88	2.09	4.18	+8.1	0.88	1.53	2.41	+5.2	0.88	2.50	5.69	+9.8
<b>Product consumption</b>																			
Roundwood	m <sup>3</sup> u.b.	8.89	37.29	22.58	16.60	17.82	+1.8	19.42	19.78	22.62	+0.8	19.42	17.85	17.80	-0.4	19.42	21.19	26.72	+1.6
Sawnwood	m <sup>3</sup>	0.75	2.29	4.64	4.91	5.80	+5.4	4.68	6.07	7.82	+2.6	4.68	5.29	6.00	+1.3	4.68	6.64	9.28	+3.5
Wood based panels	m <sup>3</sup>	0.04	0.17	0.45	0.78	2.84	+11.4	2.51	4.09	6.36	+4.8	2.51	3.25	4.15	+2.5	2.51	4.71	8.32	+6.2
Wood pulp used for paper production	MT	0.05	0.10	0.30	0.42	0.63	+6.9	0.58	1.19	2.18	+6.8	0.58	0.87	1.26	+3.9	0.58	1.43	2.96	+8.5
Paper and paperboard	MT	0.09	0.22	0.58	1.11	2.51	+8.9	2.52	5.09	9.28	+6.7	2.52	3.72	5.36	+3.9	2.52	6.10	12.64	+8.4
Recovered paper	MT	n.a.	0.04	0.16	0.19	0.94	+11.3	0.92	1.87	3.42	+6.8	0.92	1.37	1.98	+3.9	0.92	2.24	4.65	+8.5
<b>Derived demand for wood raw materials</b>																			
Other industrial roundwood	m <sup>3</sup> WRME	0.23	0.85	0.73	1.63	1.88	+5.5	2.25	2.45	2.60	+0.7	2.25	2.45	2.60	+0.7	2.25	2.45	2.60	+0.7
Sawnwood, plywood and veneer sheets	m <sup>3</sup> WRME	1.41	4.25	8.39	8.92	9.88	+5.1	7.91	10.26	13.20	+2.6	7.91	8.94	10.14	+1.3	7.91	11.20	15.63	+3.5
Reconstituted panels	m <sup>3</sup> WRME	0.04	0.19	0.59	1.02	3.40	+12.2	3.13	5.13	8.02	+4.8	3.13	4.06	5.20	+2.6	3.13	5.92	10.51	+6.2
Net pulp exports	m <sup>3</sup> WRME	0.00	0.00	0.00	0.00	0.00	n.a.	0.00	0.00	0.00	n.a.	0.00	0.00	0.00	n.a.	0.00	0.00	0.00	n.a.
Paper and paperboard	m <sup>3</sup> WRME	0.22	0.58	1.65	3.08	5.46	+8.6	5.18	10.59	19.35	+6.8	5.18	7.72	11.19	+3.9	5.18	12.68	26.28	+8.5
<b>Total</b>	<b>m<sup>3</sup> WRME</b>	<b>1.89</b>	<b>5.87</b>	<b>11.36</b>	<b>14.64</b>	<b>20.62</b>	<b>+6.3</b>	<b>18.47</b>	<b>28.42</b>	<b>43.16</b>	<b>+4.3</b>	<b>18.47</b>	<b>23.17</b>	<b>29.14</b>	<b>+2.3</b>	<b>18.47</b>	<b>32.25</b>	<b>55.02</b>	<b>+5.6</b>
<b>Consumption of wood raw materials</b>																			
Industrial roundwood	m <sup>3</sup> WRME	1.86	4.92	6.23	6.81	11.94	+4.9	10.79	14.28	19.26	+2.9	10.79	12.35	14.44	+1.5	10.79	15.70	23.36	+3.9
Recovered paper	m <sup>3</sup> WRME	n.a.	0.14	0.62	0.70	3.58	+11.3	3.48	7.12	13.00	+6.8	3.48	5.19	7.52	+3.9	3.48	8.52	17.66	+8.5
Net pulp imports	m <sup>3</sup> WRME	0.02	0.00	0.13	0.43	1.44	+12.1	1.44	3.47	6.34	+7.7	1.44	2.53	3.66	+4.8	1.44	4.15	8.60	+9.3
Other	m <sup>3</sup> WRME	0.01	0.80	4.37	6.70	3.67	+15.3	2.75	3.56	4.56	+2.6	2.75	3.11	3.52	+1.2	2.75	3.88	5.40	+3.4
<b>Total</b>	<b>m<sup>3</sup> WRME</b>	<b>1.89</b>	<b>5.87</b>	<b>11.36</b>	<b>14.64</b>	<b>20.62</b>	<b>+6.3</b>	<b>18.47</b>	<b>28.42</b>	<b>43.16</b>	<b>+4.3</b>	<b>18.47</b>	<b>23.17</b>	<b>29.14</b>	<b>+2.3</b>	<b>18.47</b>	<b>32.25</b>	<b>55.02</b>	<b>+5.6</b>

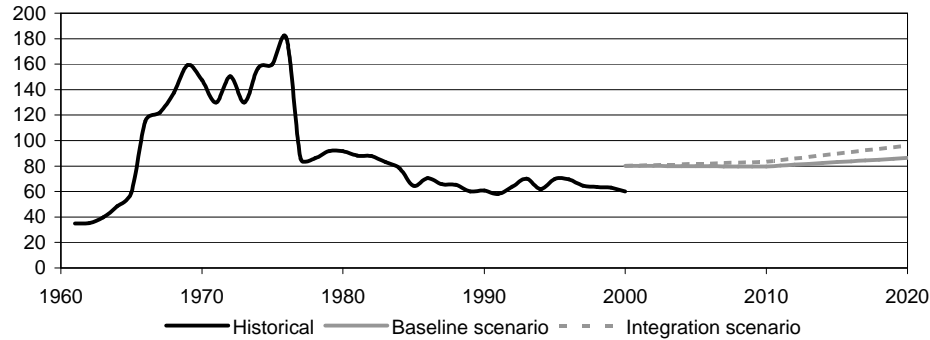
Please read the introduction for information about data sources, definitions and measurement units



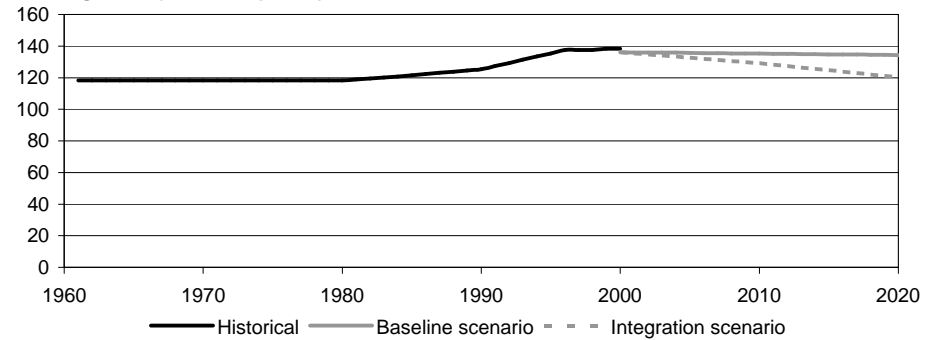
Important forest sector parameters - historical trends and forecasts:

Turkey

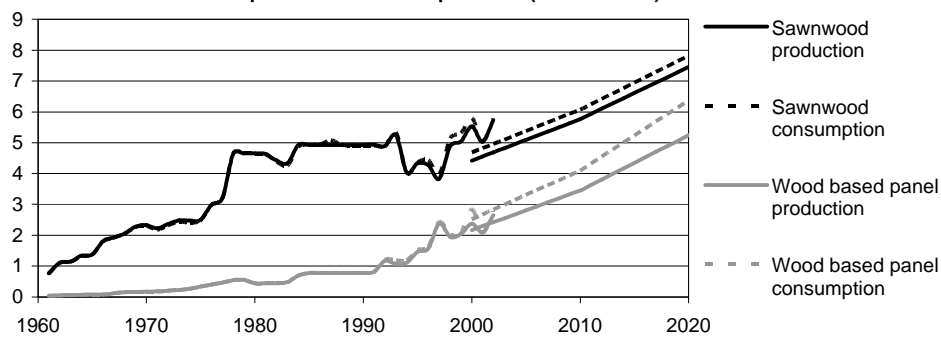
Ratio of fellings to increment (in percent)



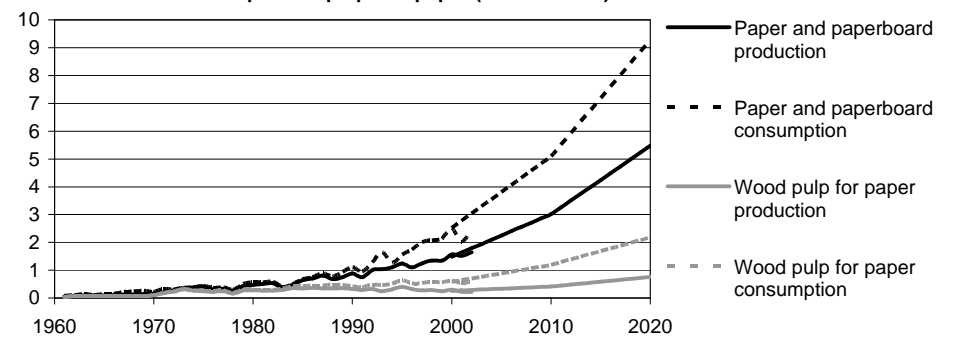
Growing stock (in m<sup>3</sup> o.b. per ha)



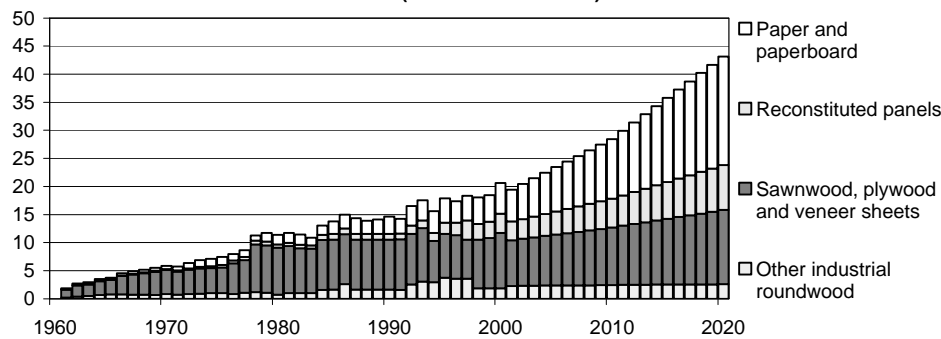
Production and consumption of solid wood products (in million m<sup>3</sup>)



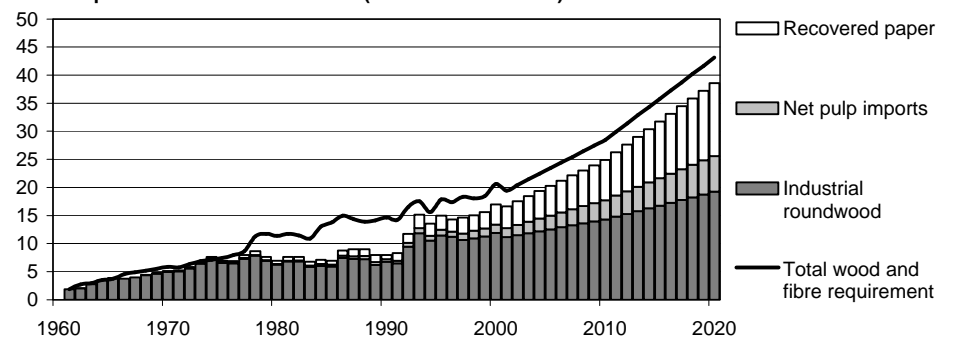
Production and consumption of pulp and paper (in million MT)



Derived demand for wood raw materials (in million m<sup>3</sup> WRME)



Consumption of wood raw materials (in million m<sup>3</sup> WRME)



Please read the introduction for information about data sources, definitions and measurement units