

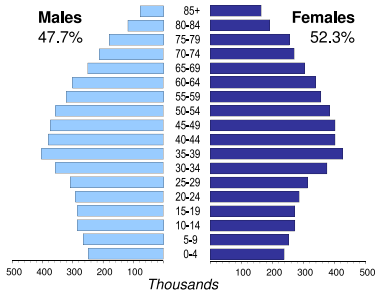


PORTUGAL

Capital (population in thsd, 2013)	Lisbon (518)
Area (km²)	91 982
Total population (thsd, 2012)	10 515
Population density (per km²)	114
Official language(s)	Portuguese
National currency	Euro (EUR)
National statistical office	

Statistics Portugal
www.ine.pt

Population by age, 2012



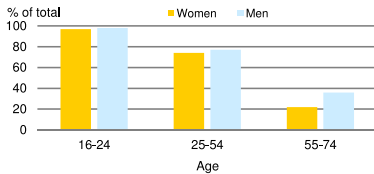
Life expectancy (in years)	at birth		at 65	
	Males	Females	2012	2012
	77.3	83.6	17.6	21.3

Total fertility rate, 2012
 average number of children per woman: 1.3

Adolescent fertility rate, 2012
 number of live births per 1,000 women aged 15-19: 11.9

Mean age of women at birth of first child, 2012
 age in years: 29.5

Computer use by age and sex, 2013

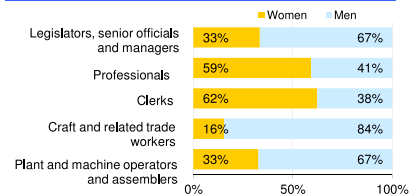


Time: UTC + 01:00

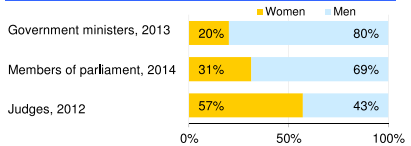


Women in the labour force, 2013 percentage of total for both sexes	48%
Gender pay gap monthly earnings, 2010 hourly wage, 2012	15% 16%
Women in part-time employment, 2013 percentage of total of women employed	16%
Female tertiary students, 2011 percentage of total for both sexes	53%
Women victims of homicide, 2005 percentage of total for both sexes	34%
Women researchers, 2011 percentage of total for both sexes	46%

Women and men in selected occupation groups, 2013



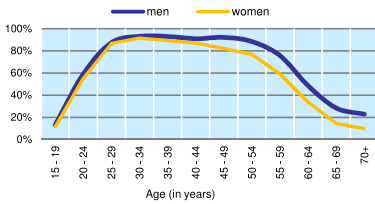
Women and men in public life



PORTUGAL

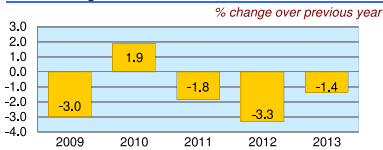
	2008	2009	2010	2011	2012	2013
Employment (% change over previous year)	0.5	-2.6	-1.5	-1.5	-4.2	-2.8
Unemployment rate (%)	8.5	10.6	12.0	12.9	15.9	16.5
Youth unemployment rate (%)	16.7	20.3	22.8	30.3	37.9	38.1

Economic activity rate, 2013

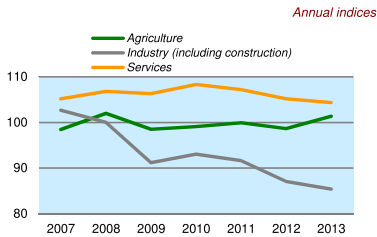


	% of GDP
Exports of goods and services, 2013	39.3
Imports of goods and services, 2013	38.3
External trade balance, 2013	1.0

Real GDP growth rate



GDP in agriculture, industry, services (2005=100)



Forest resources

Area of forest percentage of land area, 2010	38.1
---	------

Road accidents

Persons injured in road accidents, 2012	39 726
Persons killed in road accidents, 2012	738

GDP at current prices

millions of US Dollars, PPP, 2013	279 894
millions of EUR, 2013	171 211

GDP at current prices, per capita

US Dollars, PPP, 2013	26 704
EUR, 2013	16 335

Final consumption expenditure at current prices, per capita

US Dollars, PPP, 2013	22 325
-----------------------	--------

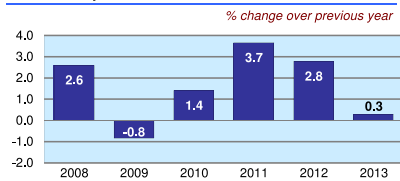
Purchasing Power Parity (PPP)

EUR per USD, US=1, 2013	0.612
-------------------------	-------

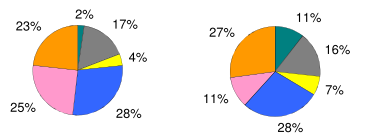
Exchange rate

Annual average, EUR per USD, 2013	0.753
-----------------------------------	-------

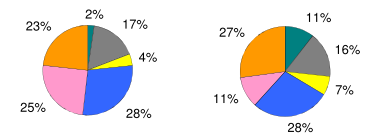
Consumer price index



GDP by major sectors, 2013



Employment in major sectors, 2013



- Agriculture, forestry and fishing (ISIC 4 A)
- Manufacturing, mining and quarrying, energy and water supply (ISIC 4 B-E)
- Construction (ISIC 4 F)
- Wholesale and retail trade, transportation, accommodation and food, communication activities (ISIC 4 G-J)
- Financial, insurance, real estate and other business service activities (ISIC 4 K-N)
- Public administration and defence, education, health and other service activities (ISIC 4 O-U)

Transport infrastructure

Railways total length in kilometres, 2012	2 541
Motorways total length in kilometres, 2012	2 988