



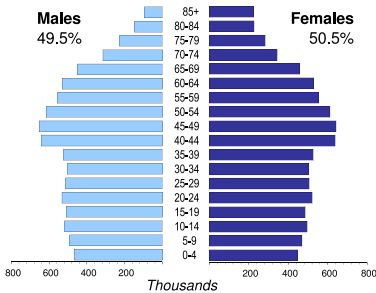
NETHERLANDS

Capital (population thsd, 2014)	Amsterdam (1 108)
Area (km²)	41 526
Total population (thsd, 2012)	16 755
Population density (per km²)	403
Official language(s)	Dutch
National currency	Euro (EUR)
National statistical office	Statistics Netherlands www.cbs.nl

Time: UTC + 01:00



Population by age, 2012



Women in the labour force, 2013 percentage of total for both sexes	46%
Gender pay gap monthly earnings, 2012	42%
hourly wage, 2012	17%
Women in part-time employment, 2013 percentage of total of women employed	77%
Female tertiary students, 2011 percentage of total for both sexes	51%
Women victims of homicide, 2010 percentage of total for both sexes	31%
Women researchers, 2011 percentage of total for both sexes	24%

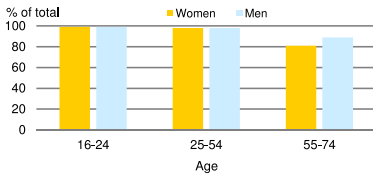
Life expectancy (in years)	at birth		at 65	
	2012	2012	2012	2012
Males	79.3	18.0		
Females	83.0	21.0		

Total fertility rate, 2012
average number of children per woman: 1.7

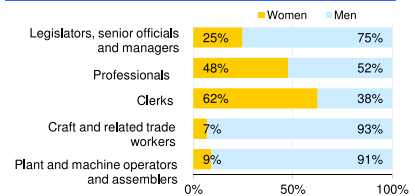
Adolescent fertility rate, 2012
number of live births per 1,000 women aged 15-19: 4.5

Mean age of women at birth of first child, 2011
age in years: 29.4

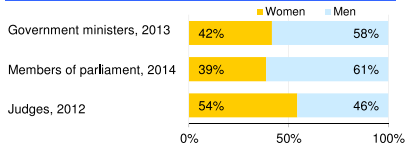
Computer use by age and sex, 2013



Women and men in selected occupation groups, 2013



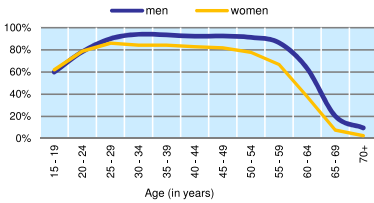
Women and men in public life



NETHERLANDS

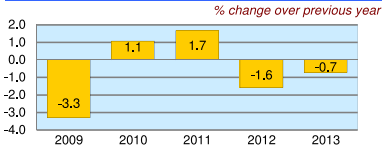
	2008	2009	2010	2011	2012	2013
Employment (% change over previous year)	1.5	-0.7	-0.4	0.7	-0.2	-1.0
Unemployment rate (%)	3.1	3.7	4.5	4.4	5.3	6.7
Youth unemployment rate (%)	5.3	6.6	8.7	7.6	9.5	11.0

Economic activity rate, 2013

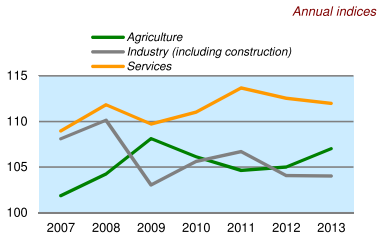


	% of GDP
Exports of goods and services, 2013	82.9
Imports of goods and services, 2013	72.6
External trade balance, 2013	10.3

Real GDP growth rate



GDP in agriculture, industry, services (2005=100)



Forest resources

Area of forest percentage of land area, 2010	10.8
---	------

Road accidents

Persons injured in road accidents, 2012	5 535
Persons killed in road accidents, 2012	650

GDP at current prices

millions of US Dollars, PPP, 2013	778 009
millions of EUR, 2013	642 851

GDP at current prices, per capita

US Dollars, PPP, 2013	46 311
EUR, 2013	38 266

Final consumption expenditure at current prices, per capita

US Dollars, PPP, 2013	33 057
-----------------------	--------

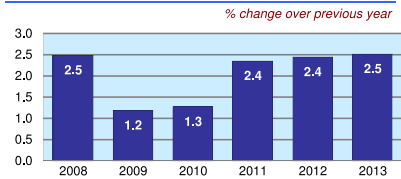
Purchasing Power Parity (PPP)

EUR per USD, US=1, 2013	0.826
-------------------------	-------

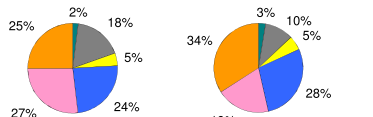
Exchange rate

Annual average, EUR per USD, 2013	0.753
-----------------------------------	-------

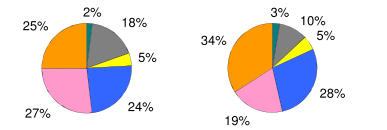
Consumer price index



GDP by major sectors, 2013



Employment in major sectors, 2013



- Agriculture, forestry and fishing (ISIC 4 A)
- Manufacturing, mining and quarrying, energy and water supply (ISIC 4 B-E)
- Construction (ISIC 4 F)
- Wholesale and retail trade, transportation, accommodation and food, communication activities (ISIC 4 G-J)
- Financial, insurance, real estate and other business service activities (ISIC 4 K-N)
- Public administration and defence, education, health and other service activities (ISIC 4 O-U)

Transport infrastructure

Railways total length in kilometres, 2011	3 013
Motorways total length in kilometres, 2009	2 631