



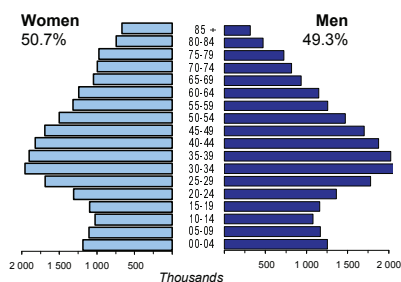
SPAIN

Capital (population, 2008)	Madrid (3 213 271)
Two largest cities	Barcelona (1 615 908)
	Valencia (807 200)
Area (km²)	505 992
Total population, 2009	45 908 594
Population density (per km²), 2009	91
Official languages	Spanish
Date joined UN	14 December 1955
National currency	Euro (EUR)
National statistical office	National Institute of Statistics http://www.ine.es/

Time: UTC + 1h



Population by age, 2009



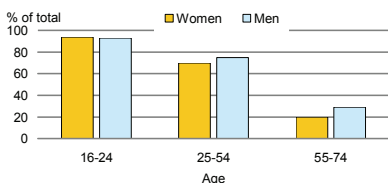
Life expectancy (in years), 2008	at birth	at 65	
	Women	84	22
	Men	78	18

Total fertility rate, 2008	1.5
average number of children per woman	

Adolescent fertility rate, 2008	14
number of live births per 1000 women aged 15-19	

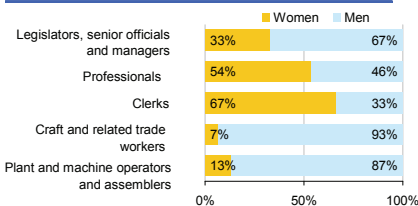
Mean age of women at birth of first child, 2006	29.3
age in years	

Computer use by age and sex, 2009

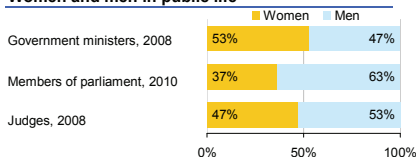


Women in the labour force, 2009	44%
percentage of total for both sexes	
Gender pay gap	..
monthly earnings	
hourly wage, 2008	17%
Women in part-time employment, 2009	23%
percentage of total of women employed	
Female tertiary students, 2007	54%
percentage of total for both sexes	
Women victims of homicide, 2008	31%
percentage of total for both sexes	
Women researchers, 2007	37%
percentage of total for both sexes	

Women and men in selected occupation groups, 2009



Women and men in public life

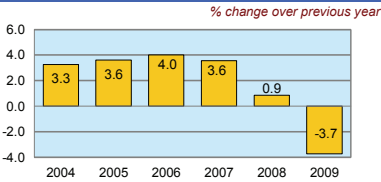


SPAIN

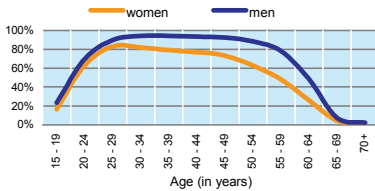
	2000	2005	2006	2007	2008	2009
Employment (% change over previous year)	5.1	4.1	3.9	3.0	-0.4	-6.6
Unemployment rate (%)	11.1	9.2	8.5	8.3	11.3	18.0
Youth unemployment rate (%)	24.3	19.7	17.9	18.2	24.6	37.8

	% of GDP
Exports of goods and services, 2009	23.4
Imports of goods and services, 2009	25.5
External trade balance, 2009	-2.2
Gross External Debt, 2009	173.7

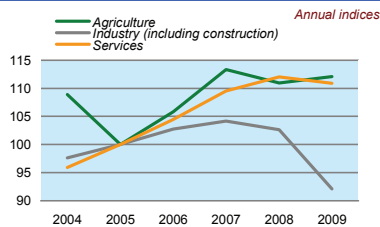
Real GDP growth rate



Economic activity rate, 2009



GDP in agriculture, industry, services (2005=100)



Forest resources

Area of Forest percentage of land area	35.9
---	------

Road accidents

Persons injured in road accidents, 2008	130 948
Persons killed in road accidents, 2009	2 714

GDP at current prices

millions of US Dollars, PPP, 2009	1 487 720
millions of EUR, 2009	1 053 910

GDP at current prices, per capita

US Dollars, PPP, 2009	32 391
EUR, 2009	22 946

Final consumption expenditure at current prices, per capita

US Dollars, PPP, 2009	25 178
-----------------------	--------

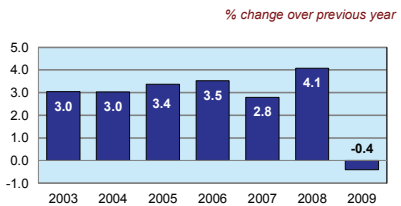
Purchasing Power Parity (PPP)

EUR per USD, US=1, 2009	0.708
-------------------------	-------

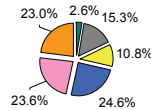
Exchange rate

Annual average, EUR per USD, 2009	0.719
-----------------------------------	-------

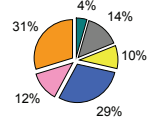
Consumer price index



GDP by major sectors, 2009



Employment in major sectors, 2009



- Agriculture, hunting & forestry; fishing (ISIC A-B)
- Industry, including energy (ISIC C-E)
- Construction (ISIC F)
- Wholesale & retail trade, repairs; hotels & restaurants; transport & communications (ISIC G-I)
- Financial intermediation; real estate, renting & business activities (ISIC J-K)
- Other service activities (ISIC L-P)

Transport infrastructure

Railways total length in kilometres, 2007	13 368
Motorways total length in kilometres, 2007	13 013