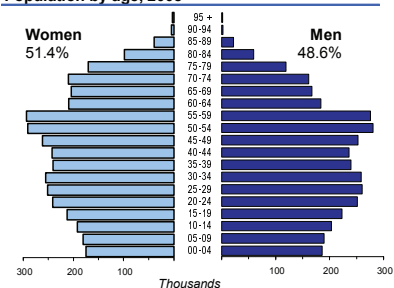




SERBIA

Capital (population, 2008)	Belgrade (1 621 396)
Two largest cities	Novi Sad (323 708)
	Niš (255 295)
Area (km ²)	88 361
Total population, 2008	7 350 221
Population density (per km ²), 2008	83
Official languages	Serbian
Date joined UN	1 November 2000
National currency	Serbian dinar (RSD)
National statistical office	Statistical Office of the Republic of Serbia http://www.stat.gov.rs

Population by age, 2008



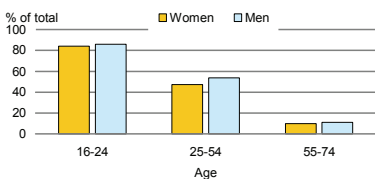
Life expectancy (in years), 2008	at birth	at 65
Women	76	16
Men	71	14

Total fertility rate, 2008	1.4
average number of children per woman	

Adolescent fertility rate, 2008	22
number of live births per 1000 women aged 15-19	

Mean age of women at birth of first child, 2008	26.5
age in years	

Computer use by age and sex, 2008

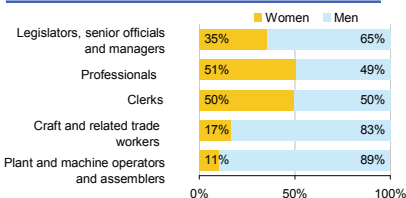


Time: UTC + 1h

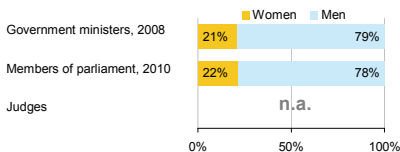


Women in the labour force, 2007	43%
percentage of total for both sexes	
Gender pay gap	4%
monthly earnings, 2007	
hourly wage	..
Women in part-time employment, 2008	11%
percentage of total of women employed	
Female tertiary students, 2008	55%
percentage of total for both sexes	
Women victims of homicide, 2008	29%
percentage of total for both sexes	
Women researchers, 2008	47%
percentage of total for both sexes	

Women and men in selected occupation groups, 2007



Women and men in public life

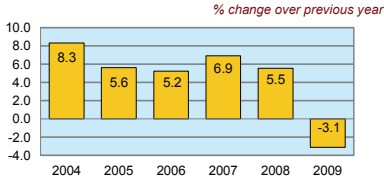


SERBIA

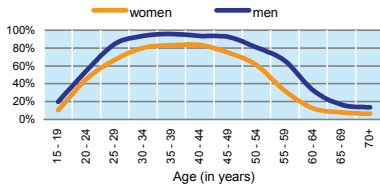
	2000	2005	2006	2007	2008	2009
Employment (% change over previous year)	..	-6.7	-3.8	1.0	6.3	-7.3
Unemployment rate (%)	12.1	20.8	20.9	18.1	13.6	16.1
Youth unemployment rate (%)	..	47.7	47.8	43.7	35.2	..

	% of GDP
Exports of goods and services, 2008	30.7
Imports of goods and services, 2008	54.2
External trade balance, 2008	-23.6
Gross External Debt, 2009	79.9

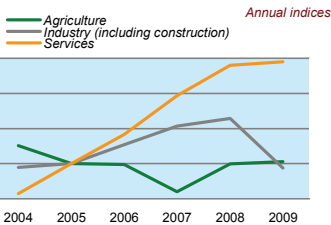
Real GDP growth rate



Economic activity rate, 2007



GDP in agriculture, industry, services (2005=100)



Forest resources

Area of Forest percentage of land area	20.5
---	------

Road accidents

Persons injured in road accidents, 2009	22 320
Persons killed in road accidents, 2009	808

GDP at current prices

millions of US Dollars, PPP, 2009	84 360
millions of RSD, 2009	2 815 000

GDP at current prices, per capita

US Dollars, PPP, 2009	11 477
RSD, 2009	382 982

Final consumption expenditure at current prices, per capita

US Dollars, PPP, 2008	11 228
-----------------------	--------

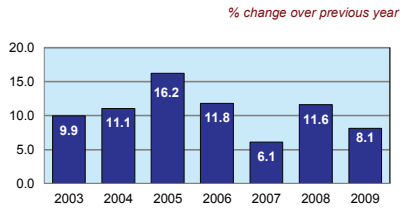
Purchasing Power Parity (PPP)

RSD per USD, US=1, 2009	33.369
-------------------------	--------

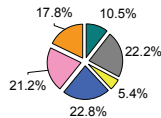
Exchange rate

Annual average, RSD per USD, 2009	67.581
-----------------------------------	--------

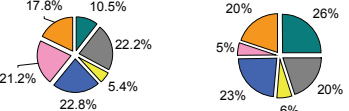
Consumer price index



GDP by major sectors, 2008



Employment in major sectors, 2008



- Agriculture, hunting & forestry; fishing (ISIC A-B)
- Industry, including energy (ISIC C-E)
- Construction (ISIC F)
- Wholesale & retail trade, repairs; hotels & restaurants; transport & communications (ISIC G-I)
- Financial intermediation; real estate, renting & business activities (ISIC J-K)
- Other service activities (ISIC L-P)

Transport infrastructure

Railways total length in kilometres, 2008	3 809
Motorways total length in kilometres, 2008	465