



CYPRUS

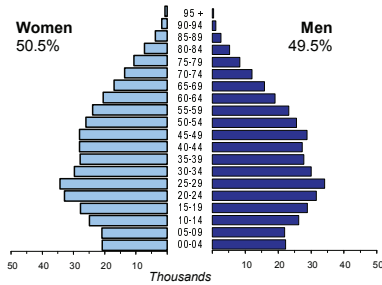
Capital (population, 2001)	Nicosia (47 832)
Two largest cities	Limassol (94 250)
	Larnaca (46 666)
Area (km ²)	9 251
Total population, 2008	793 072
Population density (per km ²), 2008	86
Official languages	Greek and Turkish
Date joined UN	20 September 1960
National currency	Euro (EUR)
National statistical office	Statistical Service of Cyprus

Statistical Service of Cyprus
<http://www.mof.gov.cy/cystat>

Time: UTC + 2h



Population by age, 2008



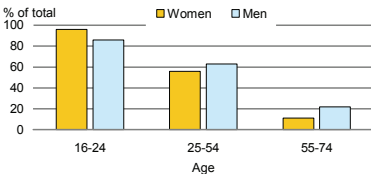
Life expectancy (in years), 2008	at birth	at 65	
	Women	83	20
	Men	78	18

Total fertility rate, 2008	1.5
average number of children per woman	

Adolescent fertility rate, 2008	7
number of live births per 1000 women aged 15-19	

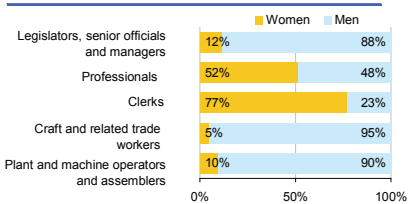
Mean age of women at birth of first child, 2005	27.5
age in years	

Computer use by age and sex, 2009

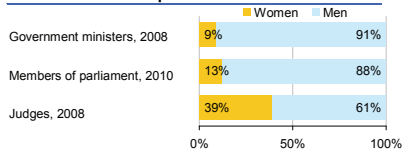


Women in the labour force, 2009	45%
percentage of total for both sexes	
Gender pay gap	..
monthly earnings	
hourly wage, 2008	22%
Women in part-time employment, 2009	12%
percentage of total of women employed	
Female tertiary students, 2007	49%
percentage of total for both sexes	
Women victims of homicide, 2007	32%
percentage of total for both sexes	
Women researchers, 2007	33%
percentage of total for both sexes	

Women and men in selected occupation groups, 2009



Women and men in public life

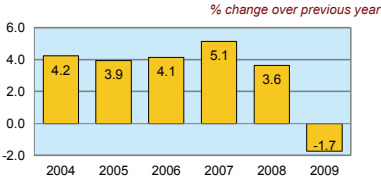


CYPRUS

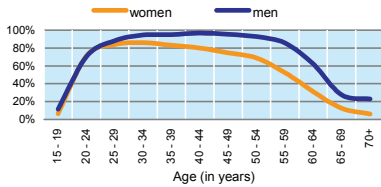
	2000	2005	2006	2007	2008	2009
Employment (% change over previous year)	2.3	3.6	1.7	3.2	2.8	-0.8
Unemployment rate (%)	4.9	5.3	4.6	4.0	3.6	5.3
Youth unemployment rate (%)	10.1	13.0	10.5	10.1	8.8	14.0

	% of GDP
Exports of goods and services, 2009	39.4
Imports of goods and services, 2009	45.2
External trade balance, 2009	-5.8
Gross External Debt, 2008	104.3

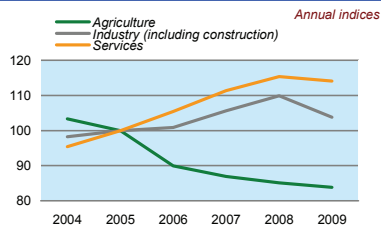
Real GDP growth rate



Economic activity rate, 2009



GDP in agriculture, industry, services (2005=100)



Forest resources

Area of Forest percentage of land area	18.9
---	------

Road accidents

Persons injured in road accidents, 2008	1 963
Persons killed in road accidents, 2008	82

GDP at current prices

millions of US Dollars, PPP, 2009	24 694
millions of EUR, 2009	16 947

GDP at current prices, per capita

US Dollars, PPP, 2009	30 944
EUR, 2009	21 236

Final consumption expenditure at current prices, per capita

US Dollars, PPP, 2009	27 416
-----------------------	--------

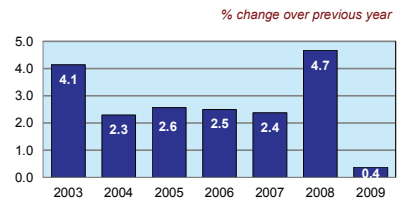
Purchasing Power Parity (PPP)

EUR per USD, US=1, 2009	0.686
-------------------------	-------

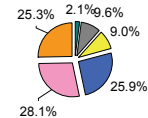
Exchange rate

Annual average, EUR per USD, 2009	0.719
-----------------------------------	-------

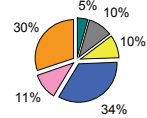
Consumer price index



GDP by major sectors, 2009



Employment in major sectors, 2009



- Agriculture, hunting & forestry; fishing (ISIC A-B)
- Industry, including energy (ISIC C-E)
- Construction (ISIC F)
- Wholesale & retail trade, repairs; hotels & restaurants; transport & communications (ISIC G-I)
- Financial intermediation; real estate, renting & business activities (ISIC J-K)
- Other service activities (ISIC L-P)

Transport infrastructure

Railways total length in kilometres	..
Motorways total length in kilometres	257