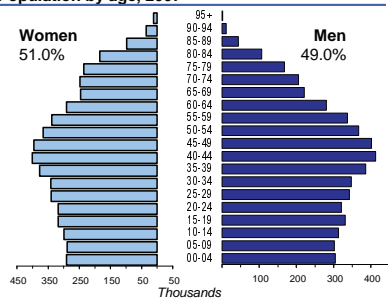




BELGIUM

Capital (population, 2009)	Brussels (153 514)
Two largest cities	Antwerp (478 170) Gent (240 191)
Area (km²)	30 528
Total population, 2009	10 788 500
Population density (per km²), 2009	353
Official languages	Dutch, French and German
Date joined UN	27 December 1945
National currency	Euro (EUR)
National statistical office	Directorate General Statistics and Economic Information http://www.statbel.fgov.be

Population by age, 2007



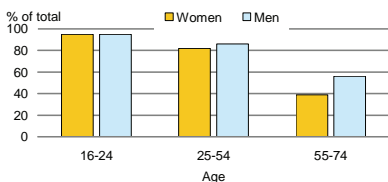
Life expectancy (in years), 2007	at birth		at 65	
	Women	Men	Women	Men
	83	77	21	17

Total fertility rate, 2007	1.8
average number of children per woman	

Adolescent fertility rate, 2007	10
number of live births per 1000 women aged 15-19	

Mean age of women at birth of first child, 2006	27.7
age in years	

Computer use by age and sex, 2009

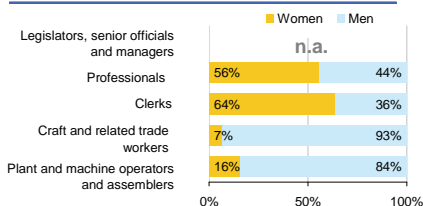


Time: UTC + 1h

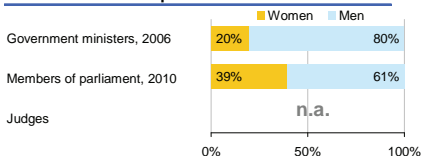


Women in the labour force, 2009	45%
percentage of total for both sexes	
Gender pay gap	..
monthly earnings	
hourly wage, 2008	9%
Women in part-time employment, 2009	41%
percentage of total of women employed	
Female tertiary students, 2007	55%
percentage of total for both sexes	
Women victims of homicide	..
percentage of total for both sexes	
Women researchers, 2007	31%
percentage of total for both sexes	

Women and men in selected occupation groups



Women and men in public life

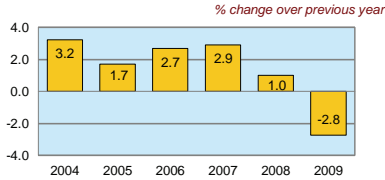


BELGIUM

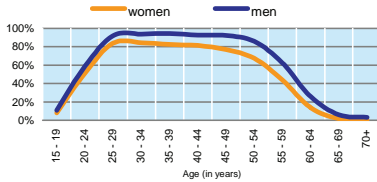
	2000	2005	2006	2007	2008	2009
Employment (% change over previous year)	2.0	1.4	1.2	1.6	1.7	-0.4
Unemployment rate (%)	6.9	8.5	8.3	7.5	7.0	7.9
Youth unemployment rate (%)	16.7	21.5	20.5	18.8	18.0	21.9

	% of GDP
Exports of goods and services, 2009	73.0
Imports of goods and services, 2009	70.2
External trade balance, 2009	2.7
Gross External Debt, 2009	304.8

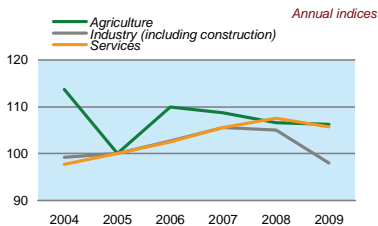
Real GDP growth rate



Economic activity rate, 2009



GDP in agriculture, industry, services (2005=100)



Forest resources

Area of Forest percentage of land area	22.2
---	------

Road accidents

Persons injured in road accidents, 2008	55 643
Persons killed in road accidents, 2008	944

GDP at current prices

millions of US Dollars, PPP, 2009	393 437
millions of EUR, 2009	339 162

GDP at current prices, per capita

US Dollars, PPP, 2009	36 463
EUR, 2009	31 433

Final consumption expenditure at current prices, per capita

US Dollars, PPP, 2009	28 110
-----------------------	--------

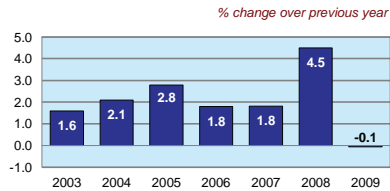
Purchasing Power Parity (PPP)

EUR per USD, US=1, 2009	0.862
-------------------------	-------

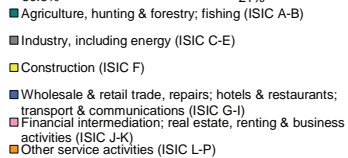
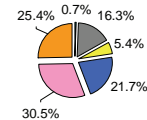
Exchange rate

Annual average, EUR per USD, 2009	0.719
-----------------------------------	-------

Consumer price index



GDP by major sectors, 2009



Transport infrastructure

Railways total length in kilometres, 2008	3 513
Motorways total length in kilometres, 2008	1 763