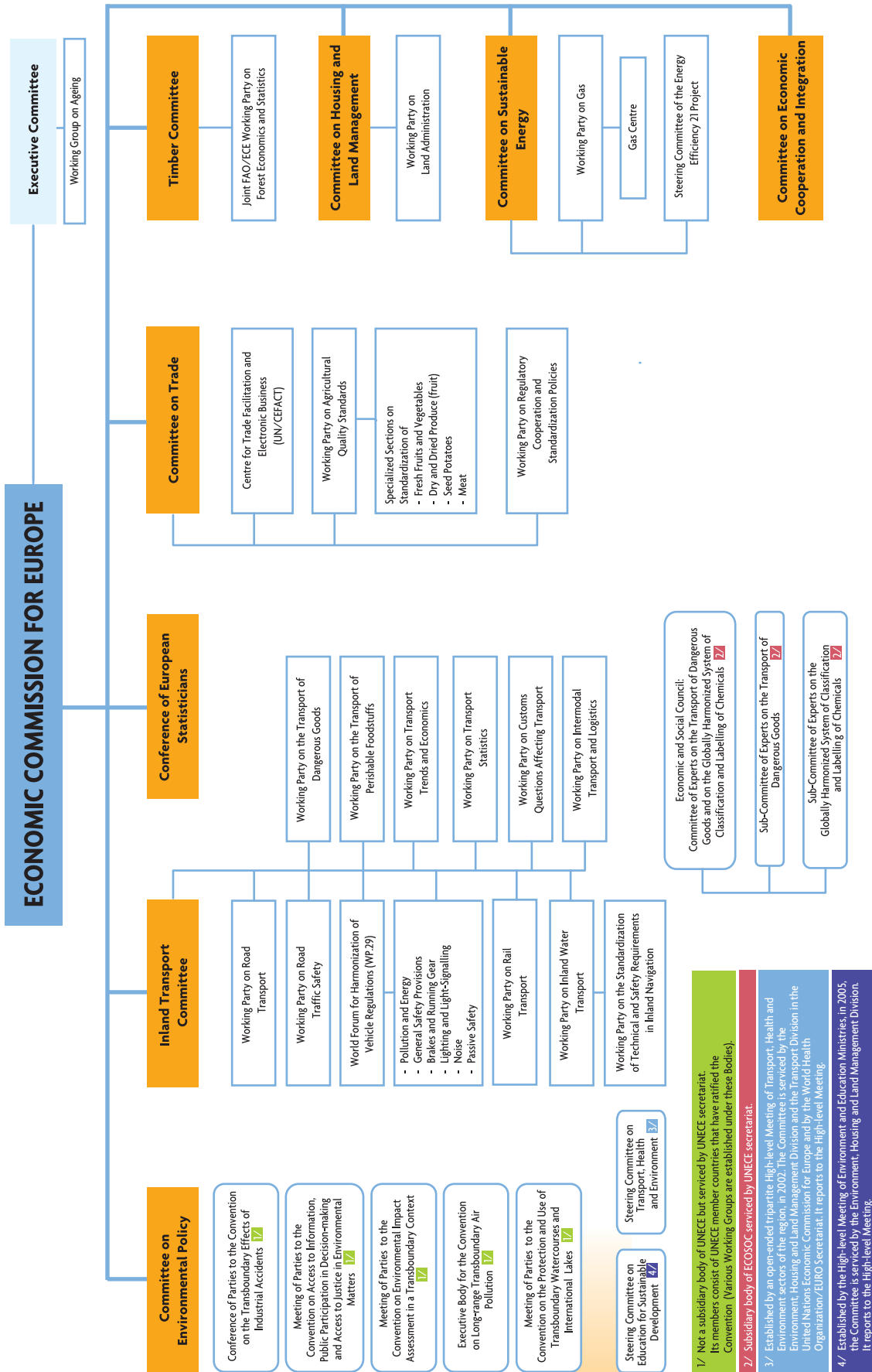


INTERGOVERNMENTAL STRUCTURE



^{1/} Not a subsidiary body of UNECE but serviced by UNECE secretariat. Its members consist of UNECE member countries that have ratified the Convention (Various Working Groups are established under these bodies).

^{2/} Subsidiary body of ECOSOC serviced by UNECE secretariat.

^{3/} Established by an open-ended tripartite High-level Meeting of Transport, Health and Environment sectors of the region, in 2002. The Committee is serviced by the Environment, Housing and Land Management Division and the Transport Division in the United Nations Economic Commission for Europe and by the World Health Organization/EURO Secretariat. It reports to the High-level Meeting.

^{4/} Established by the High-level Meeting of Environment and Education Ministries, in 2005. The Committee is serviced by the Environment, Housing and Land Management Division. It reports to the High-level Meeting.