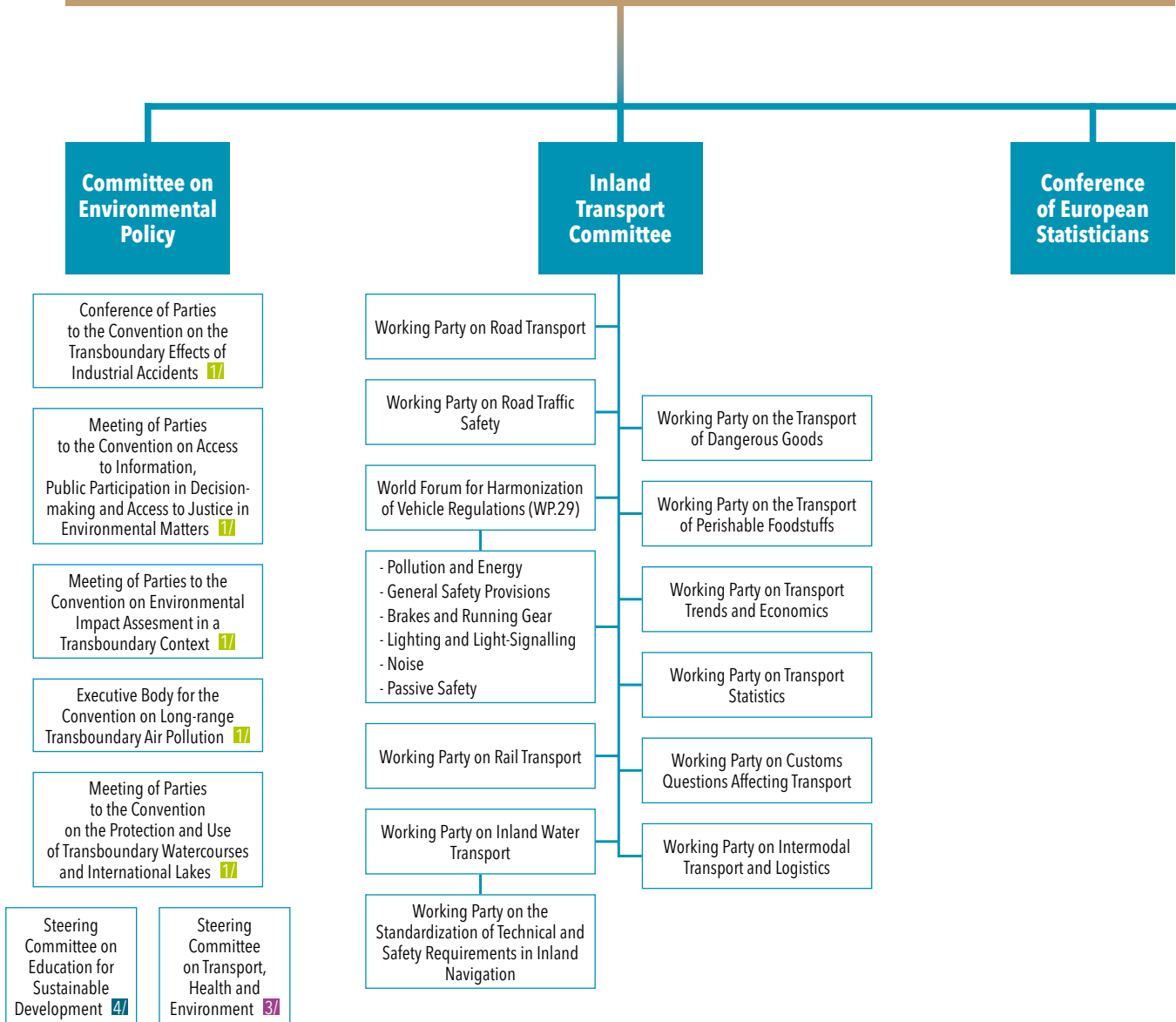


Economic Commission for Europe



1/ Not a subsidiary body of UNECE but serviced by UNECE secretariat. Its members consist of UNECE member countries that have ratified the Convention (Various Working Groups are established under these Bodies).

2/ Subsidiary body of ECOSOC serviced by UNECE secretariat.

3/ Established by an open-ended tripartite High-level Meeting of Transport, Health and Environment sectors of the region, in 2002. The Committee is serviced by the Environment, Housing and Land Management Division and the Transport Division in the United Nations Economic Commission for Europe and by the World Health Organization/EURO Secretariat. It reports to the High-level Meeting.

4/ Established by the High-level Meeting of Environment and Education Ministers, in 2005, the Committee is serviced by the Environment, Housing and Land Management Division. It reports to the High-level Meeting.

Economic and Social Council:
Committee of Experts on the Transport of Dangerous Goods and on the Globally Harmonized System of Classification and Labelling of Chemicals 27

Sub-Committee of Experts on the Transport of Dangerous Goods 27

Sub-Committee of Experts on the Globally Harmonized System of Classification and Labelling of Chemicals 27

Executive Committee

Working Group on Ageing

Committee on Trade

Centre for Trade Facilitation and Electronic Business (UN/CEFACT)

Working Party on Agricultural Quality Standards

Specialized Sections on Standardization of

- Fresh Fruit and Vegetables
- Dry and Dried Produce
- Seed Potatoes
- Meat

Working Party on Regulatory Cooperation and Standardization Policies

Timber Committee

Joint FAO/ECE Working Party on Forest Economics and Statistics

Committee on Housing and Land Management

Working Party on Land Administration

Committee on Sustainable Energy

Working Party on Gas

Gas Centre

Steering Committee of the Energy Efficiency 21 Project

Committee on Economic Cooperation and Integration