

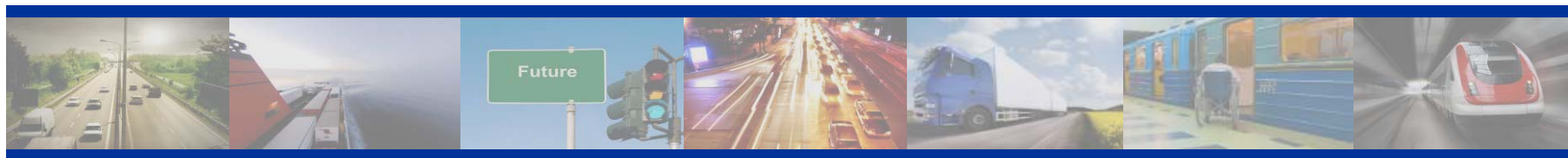


United Nations Economic Commission for Europe
Transport Division

ForFITS

For Future Inland Transport Systems

Eva Molnar, Director
UNECE Transport Division
March 31 - 2011



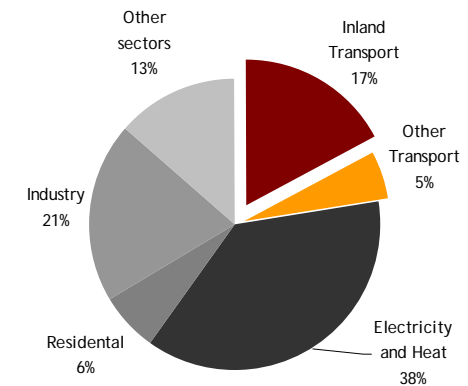


CO₂ emissions from transport

Urgent global need to reduce CO₂ emissions:

- Global total CO₂ emissions have more than doubled since 1971.
- Transport constitutes for more than one-fifth of total CO₂ emissions.
- Emissions from transport have increased by 17% from 2000 to 2008.
- Road transport constitutes for about three-quarter of CO₂ emissions from transport.

CO₂ emissions 2008



Source: IEA

Action is **urgently needed!**





Responses to climate challenge

UNECE WP.29 (2008) - a possible strategy for climate change mitigation :

2015. 30% increase of energy efficiency of all new vehicles with the current combustion engine technology

2020. full introduction into the global market of new environmentally friendly vehicles (e.g. plug-in hybrid electric vehicles hydrogen and fuel-cell vehicles)

2040. full introduction into the global market of electric vehicles

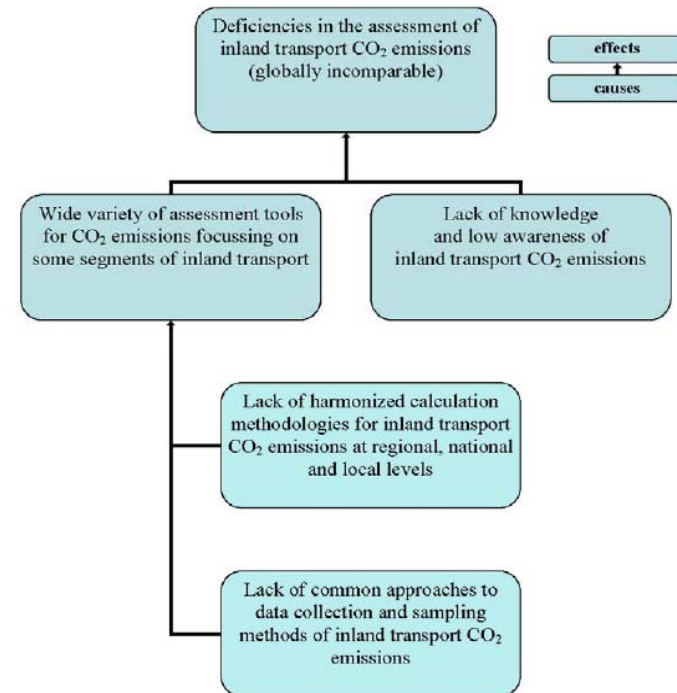




For Future Inland Transport Systems

Assessing the CO₂ emissions from inland transport

1. Global project: 2011-2013
2. Status Report
3. Data collection recommendations
4. Review of existing tools
5. Uniform methodology for the monitoring of inland transport CO₂ emissions
6. Transport Policy Converter
7. Pilots





Thank you for your attention



United Nations Economic Commission for Europe
Transport Division

