



## CENTRAL ASIA: REGIONAL RESILIENT LANDSCAPES RESTORATION PROGRAM (RESILAND CA+)



**RESILAND CA+**  
RESILIENT LANDSCAPES PROGRAM



**PROGREEN**



**WORLD BANK GROUP**

# THIS IS CENTRAL ASIA





# LANDSCAPE MAP OF CENTRAL ASIA: Mountains and Steppes







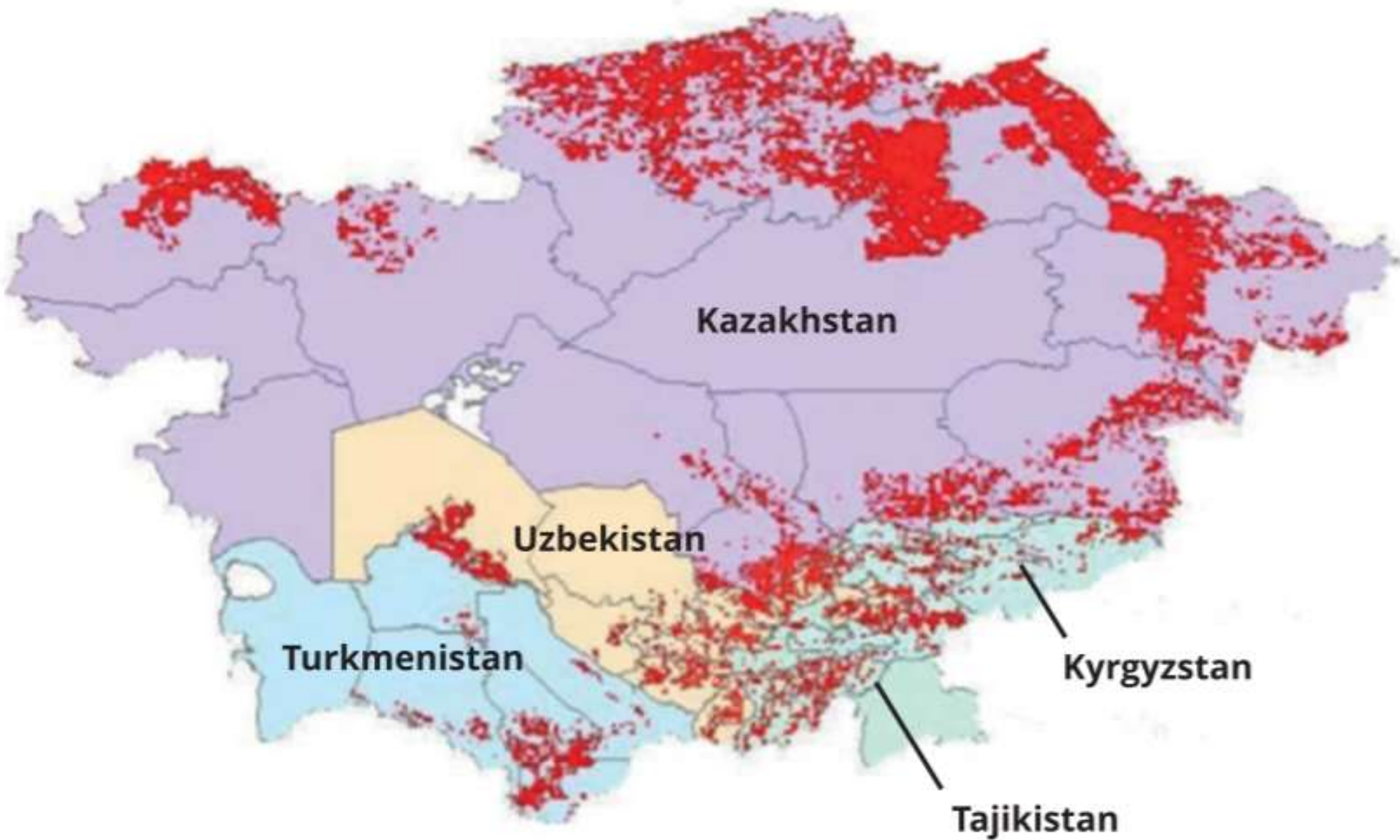
Why





# Hot spots of land degradation in Central Asia

Source: Mirzabaev et al. (2016)<sup>3</sup>





# Economic Impact

It costs the regional economy 4% of GDP  
(ELD, 2016)



# The Challenge is Regional

Land degradation poses a major threat to **regional natural infrastructure** (shared transboundary ecosystems and protected areas), **built regional infrastructures** (roads and dams) and to the **people and fragile economies along the borders** in Central Asia.



**RESILAND CA<sup>+</sup>**  
RESILIENT LANDSCAPES PROGRAM





# The issue is exacerbated by historically weak regional collaboration

Barriers include:

- competing geopolitical interests,
- differing national distribution of costs and benefits from regional cooperation initiatives, and
- contestation surrounding regional institutions.





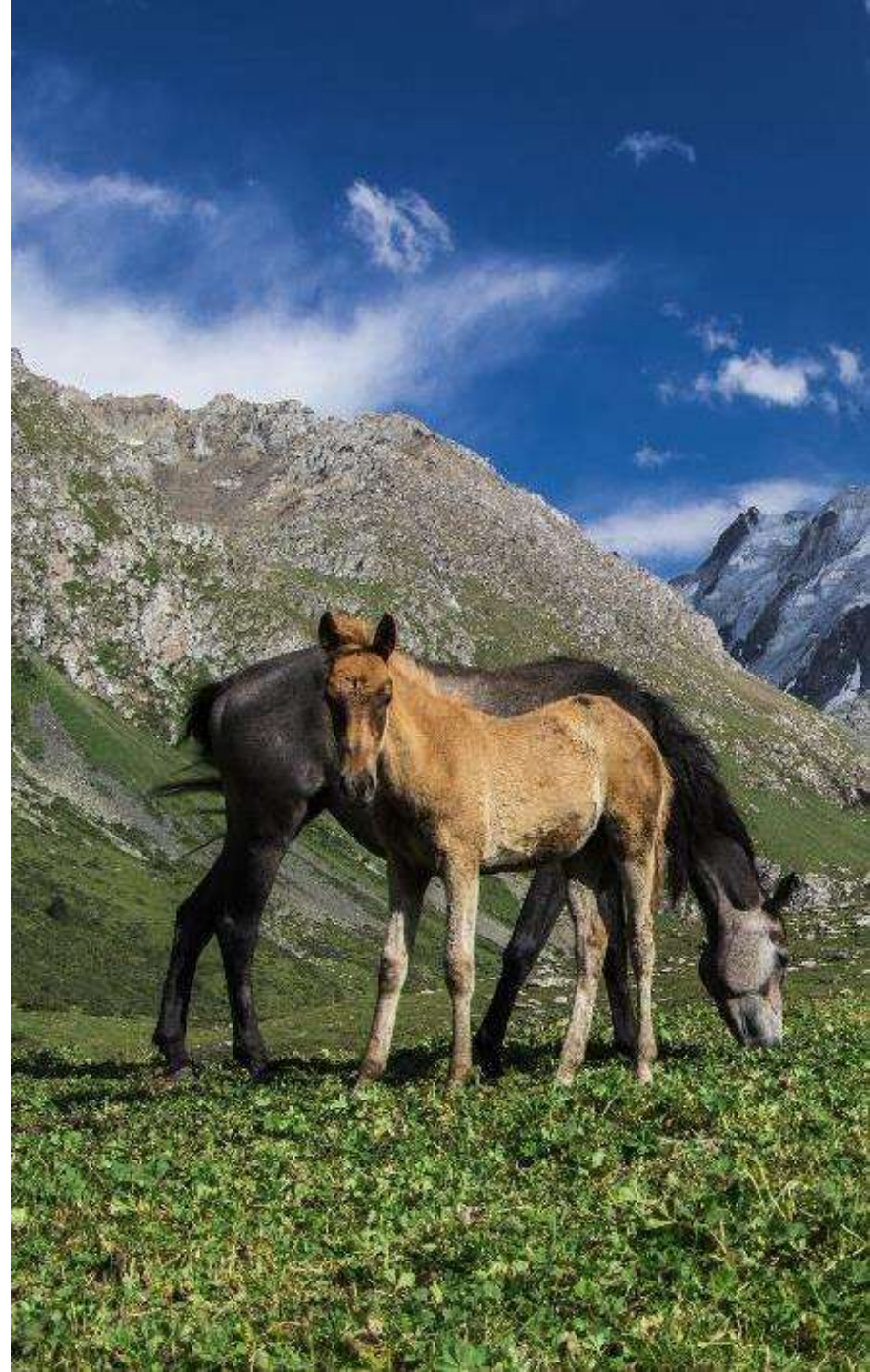
How





# A REGIONAL RESILAND PROGRAM:

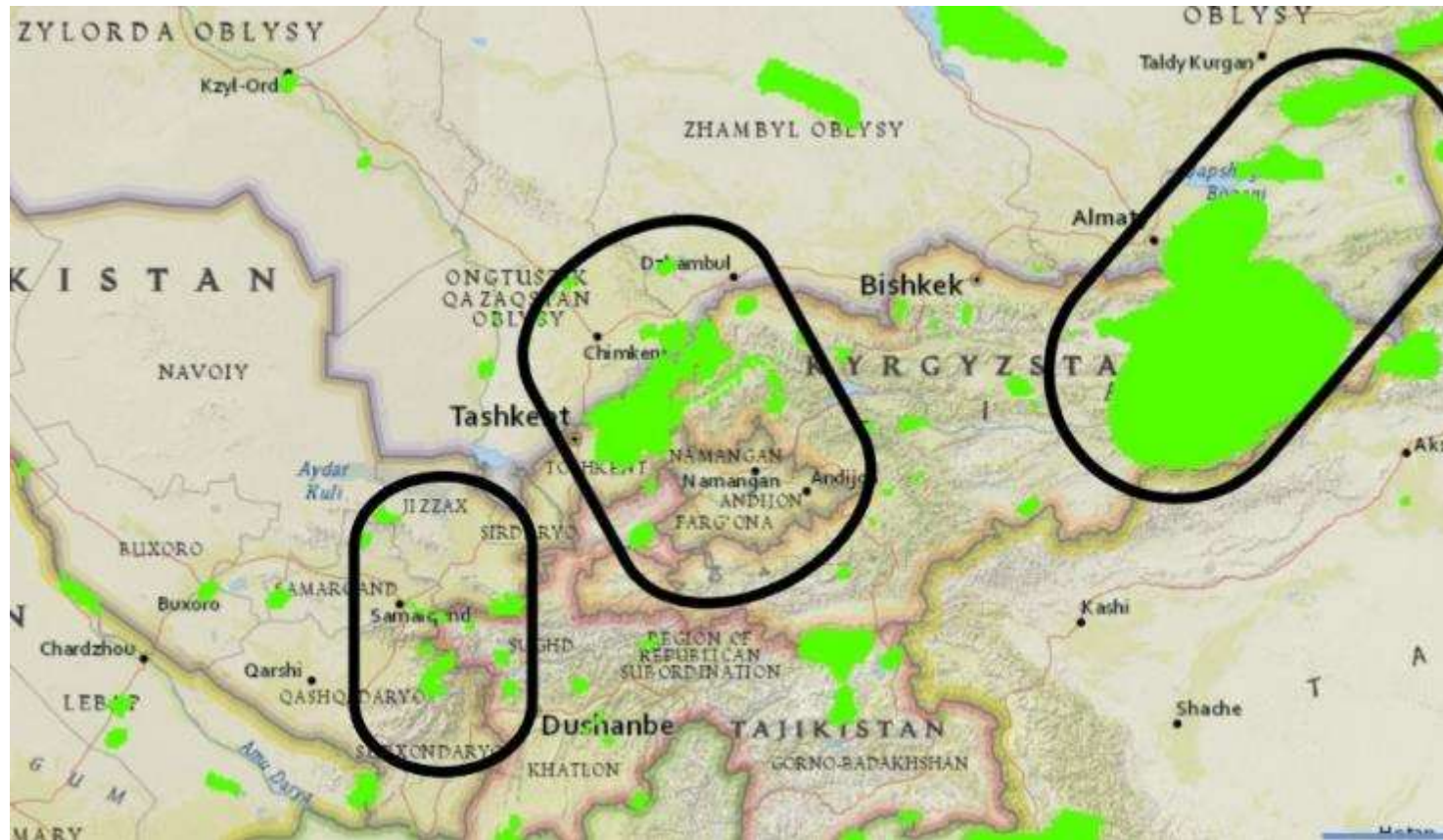
**Program PDO:** The objective of the RESILAND CA+ Program is to increase the resilience of regional landscapes in Central Asia.





# Targeting Transboundary Corridors

such as roads, waterways, transboundary protected areas or those prone to disasters



## Focusing on:

- **Increasing the resilience of regional infrastructure** (i.e. Belt and Road Initiative, dams, roads)
- **Increasing the resilience of transboundary ecosystems** that need to be managed as one
- **Tackling fragility along borders** by increasing livelihood opportunities and jobs
- **Improving regional collaboration** on collaborative landscapes management







## The Governments are committed

2019 - Governments requested World Bank assistance

2019 - Launch of ECCA30 Partnership for Restoration

2018 - Signature of the Astana Resolution for Restoration

2018- Historic summit by Central Asian Presidents

# The World Bank is committed:

2020: Regional Engagement Framework for Central Asia (REFCA) that prioritizes Trade and Connectivity and Regional Public Goods

2018: Systematic Diagnostic for Central Asia



**RESILAND CA<sup>+</sup>**  
RESILIENT LANDSCAPES PROGRAM



## REGIONAL Activities: built at two levels

### **Implemented with regional institutions (financed by IDA and BETF).**

- **RESILAND web portal implemented**
- **Regional communication and regional events**
- **Regional M&E**
- **Joint participation in ECCA30 Partnership**
- **Joint Implementation of Peace and Forest Initiative (UNCCD /Korea)**

### **Implemented with National Governments with National SOP. working on transboundary corridors and watersheds on landscape restoration and territorial development (financed by IDA)**

#### **Harmonized Projects results framework**

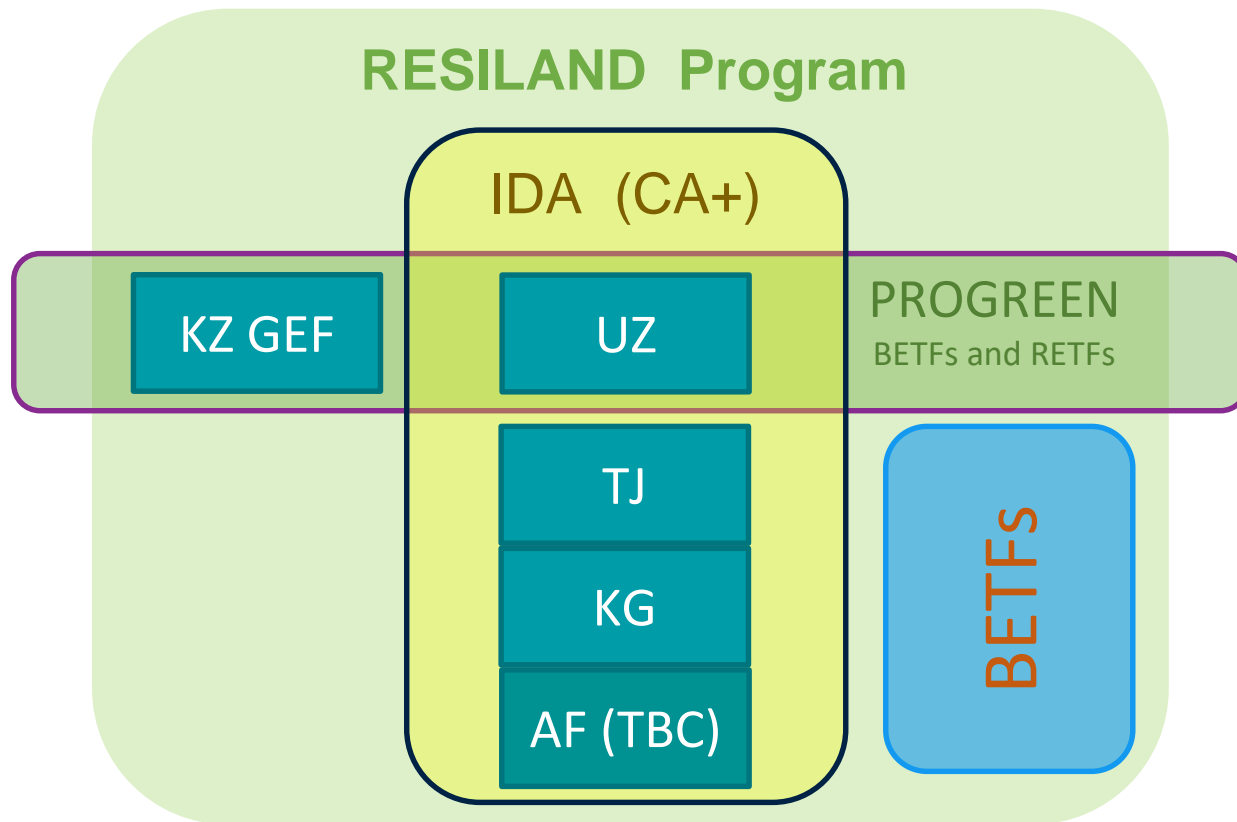
- **Landscape restored along corridors**
- **Peace parks implemented**
- **Key infrastructures (roads and dams) protected**
- **Livelihood and jobs restored along borders**



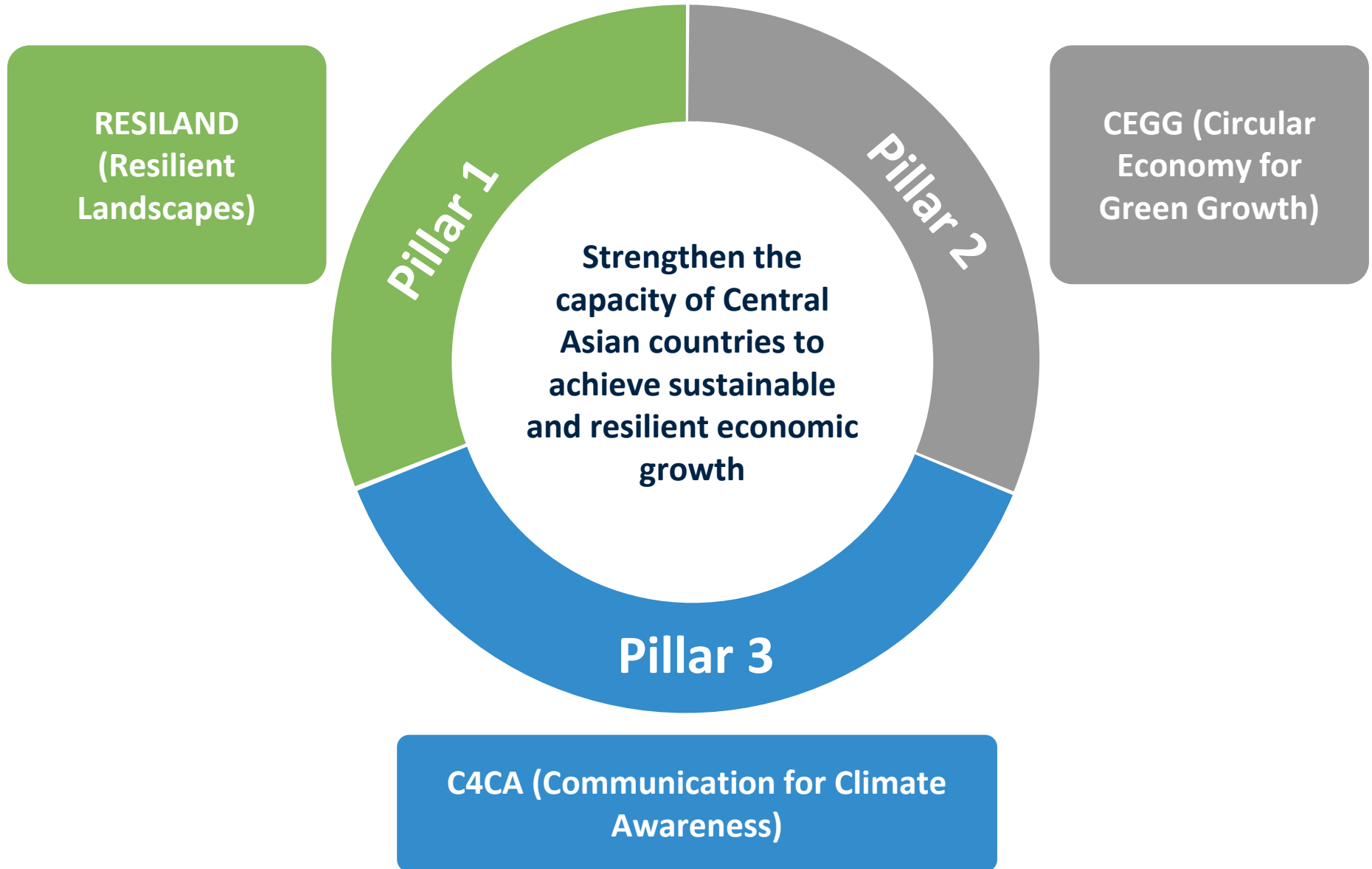
## RESILAND CA+ : impact beyond Central Asia

- **Existing engagements:** landscape engagement in Afghanistan
- **Protecting** infrastructure investment of the Belt and Road Initiative
- **Restoring** landscape corridors along the critical borders
- **Creating** economic opportunities in fragile transboundary communities and contribute to security





# CENTRAL ASIA: CLIMATE AND ENVIRONMENT (CLIENT) PROGRAM





# BETFs SUPPORTING THE CLIENT PROGRAM

With only \$75K in BB FY20 and \$50K in BB FY21, CLIENT has leveraged the following TFs

	TF	Objectives/Descriptions	USD
Pillar 1	PROFOR	Report ready to be published.	\$80K
	PROGREEN	PROGREEN program to add Landscape Restoration Component to CACIP. PROGREEN to also produce GFR.	\$2.5M
	CAWEP	Complete tasks 1 & 2 with ongoing data collection in Tajikistan (additional funding leveraged to universities)	\$480K
	CAWEP	This report will produce a map of landscape restoration opportunities at national level, and will inform the design of the Kyrgyz RESILAND CA+ project.	\$400K
	WAVES	Report raised the issue of LD with the government which contributed to their request for a new investment under the RESILAND program.	\$250K
Pillar 2	KGGTF	CE Studies, Webinar, Draft Report by Consultant	\$500K
	NDC JIT	To explore policy options including possible environment taxes for joint climate and air pollution benefits in fossil fuels	\$70K
Pillar 3	CAWEP	This Challenge is expected to be a flagship event, bringing in private sector like Plug and Play.	\$400K

# FIVE REGIONAL PROJECTS GLUED BY A REGIONAL UMBRELLA OF CROSS BORDER LANDSCAPES, ACTIVITIES AND INSTITUTIONS

## RESILAND REGIONAL ACTIVITIES

- **BUILDING RESILIENCE THROUGH REGIONAL LANDSCAPES, KNOWLEDGE AND INSTITUTIONS** : Regional IDA and/or RETF components in country projects, leveraged by BETFs, PROGREEN

## RESILAND GEF KAZAKHSTAN

- P171577
- GEF - \$ 4 M & PROGREEN
- DM SEPTEMBER 8 2020

## RESILAND CA+ TAJIKISTAN

- P171524
- REGIONAL TAG
- IDA – \$ 30 M
- 1st MISSION COMPLETED – PCN Sept 30, 2020 -BOARD Q1 FY22

## RESILAND CA+ UZBEKISTAN

- IDA - \$ 150 M & PROGREEN
- REGIONAL TAG
- AIS approved –PPG – PCN October 2020 – BOARD – Q2 FY22.

## RESILAND CA+ KYRGYZSTAN

- P CODE to be created
- REGIONAL TAG
- DELIVERY Q3 FY 22

## RESILAND CA+ AFGHANISTAN

- TBC





RESILAND CA+  
RESILIENT LANDSCAPES PROGRAM

## Harmonized National PDOs:

to increase adoption of landscape restoration practices by rural communities in selected regions and promote collaboration by Central Asia countries on transboundary landscape restoration.

# Harmonized SOP Project Components

I. Strengthen  
Institutions and  
Policies, and  
Regional  
Cooperation

II. Enhance  
Resilient Landscape  
Management and  
Livelihoods

III. Contingency  
Emergency  
Response  
Component

IV. Project  
Management and  
Coordination

## Harmonized PDO-Level Indicators

I. Land  
Degradation  
Neutrality Target  
Set (Yes/No)

II. Land Area under  
Sustainable  
Landscape  
Management  
Practices  
(CRI/Hectare)

III. Beneficiaries  
Adopting  
Landscape  
Restoration  
Practices (Number,  
disaggregated by  
sex)

IV. Transboundary  
sustainable  
landscape  
management  
policies  
harmonized  
(Number)



**RESILAND CA<sup>+</sup>**  
RESILIENT LANDSCAPES PROGRAM



**WORLD BANK GROUP**



# Intervention examples



**Productive  
plantation**



**Agroforestry**



**Ecotourism**



**Water harvesting**

# RESILAND CA+ SOP: Impacts







**More countries of Central Asia are invited  
to join RESILAND program and why not a  
RESILAND for Caucasus?**







**Thank you**





# RESILAND CA+ UZBEKISTAN



In Uzbekistan, forest covers 8.6% of the territory and has an important protective function



**RESILAND CA+**  
RESILIENT LANDSCAPES PROGRAM



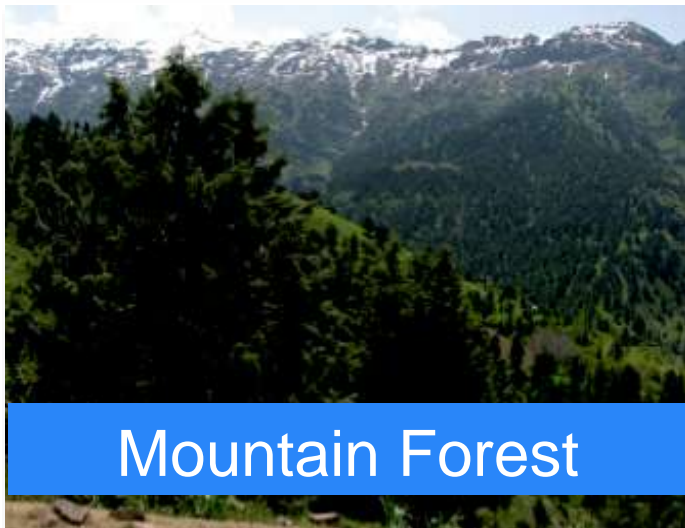
Forests are critical to combat land degradation and mitigate climate change (IPCC 2019)



Dryland Forest



Tugai Forest

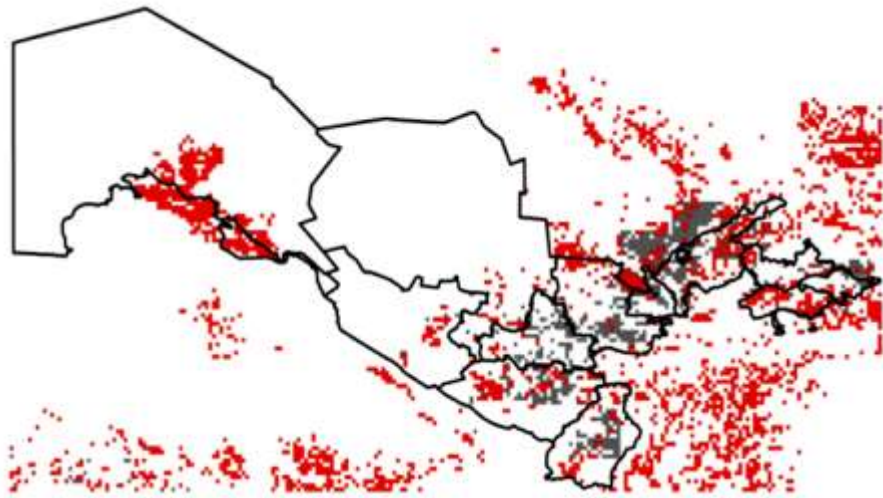


Mountain Forest



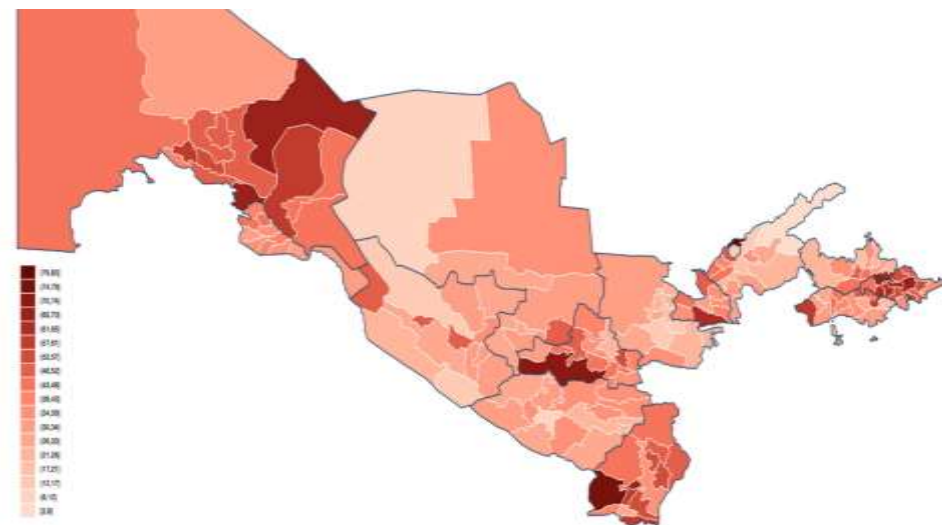
Fruit plantations

# Degradation hotspots are prevalent in South-East and correlate with poverty and borders



Biomass-based identification of land degradation hotspots in Uzbekistan (*in red*).  
Source Le et al. (2014)

Poverty headcount ratio at \$5.5-a-day PPP  
per person, 2018







## The issue is exacerbated by weak forest governance

- Fragmentation of responsibilities among different entities
- Proliferation of laws, decrees and policy acts
- Low engagement of private sector and the community
- Unclear concession mechanisms
- Lack of institutional capacity

# Proposed locations





# RESILAND CA+ TAJIKISTAN

- 60% of Central Asia's glaciers, 40-60% of national renewable freshwater resources
- Origin of Amudarya river – significant downstream and regional importance
- 82% including 98% of agricultural land is affected by some level of erosion, with **89 % affected by high and medium levels of erosion**
- Processes magnified by climate change to which the country is



RESILAND CA+  
RESILIENT LANDSCAPES PROGRAM

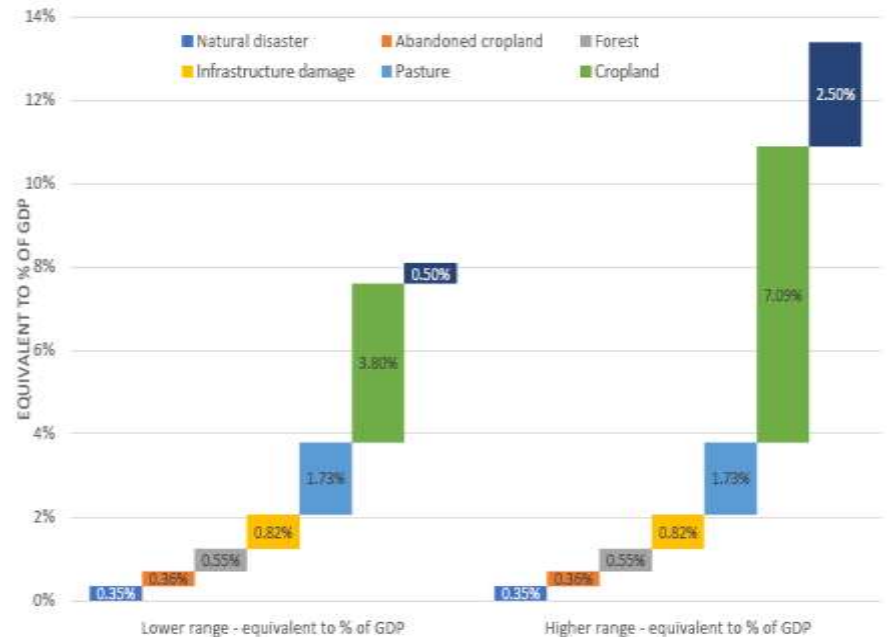




# Cost of Environmental Degradation 2020 - RESILAND with PROFOR grant

This study estimated the minimum total economic cost of LD in Tajikistan in 2019 to be between 539 Million US\$ and 950 Million US\$ which are equivalent to 8.1% and 13.4% of GDP, respectively

The major economic cost is related to yield (crop and crop residue) loss in crop lands including those abandoned or fallowed to regenerate (equivalent to 7.5% of GDP).



**RESILAND CA+**  
RESILIENT LANDSCAPES PROGRAM

# Institutional context

- Considerable change in institutional arrangements and mandates (mergers, re-organization, new structures)
- Limited frameworks and capacities for integrated natural resources management
- Opportunities – build upon River Basins arrangements (RBOs and RBCs), ecosystem-based adaptation approaches, lessons from previous and other projects



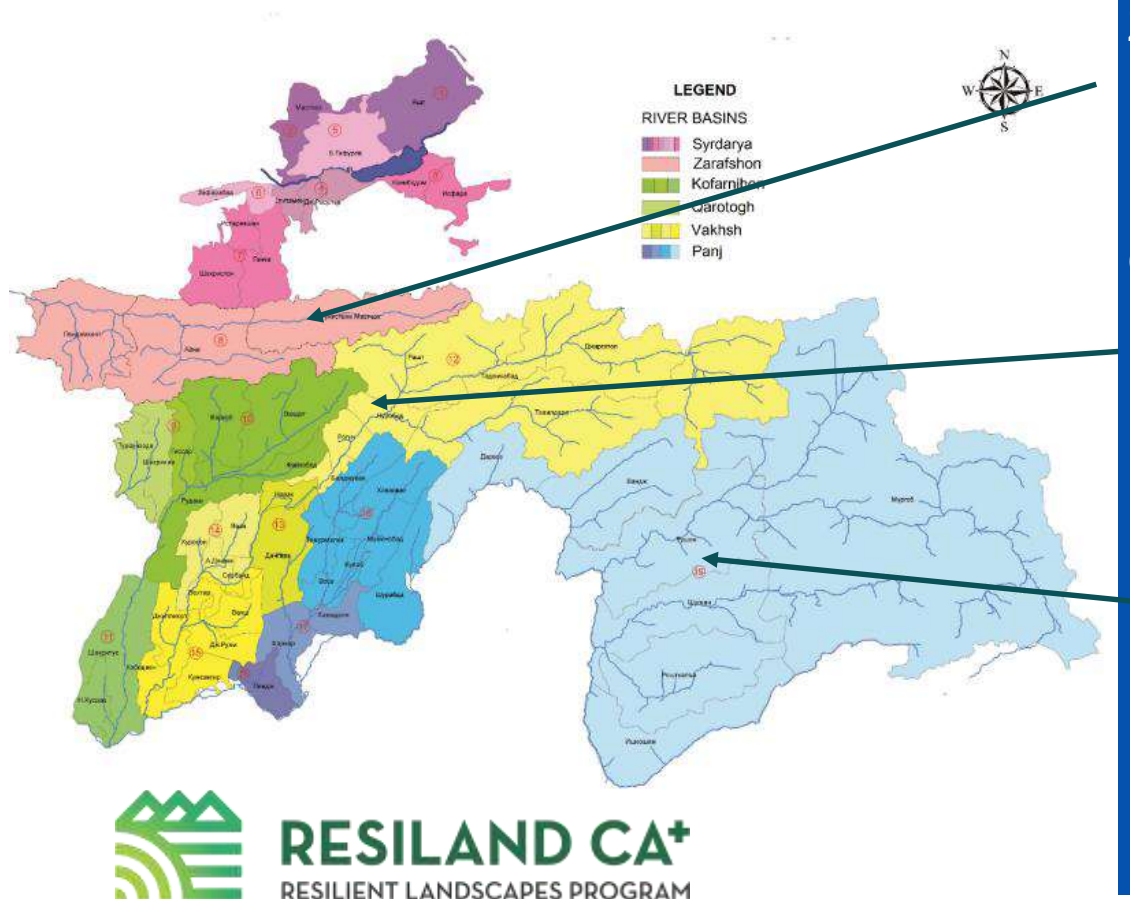
**RESILAND CA+**  
RESILIENT LANDSCAPES PROGRAM



# Key Stakeholders

- Government – Committee for Environmental Protection, Forestry Agency, Ministry of Water and Energy, Ministry of Agriculture
- Donor partners – World Bank, Asian Development Bank, JICA, Swiss Development Cooperation, KfW, Green Climate Fund (WFP), Adaptation Fund (UNDP), IFAD
- International implementing institutions – GIZ, UNDP, WFP,
- CSOs - Aga Khan Foundation, Caritas, local organizations
- Regional organizations – Regional Environmental Centre for Central Asia (CAREC), University of Central Asia (UCA)

# Possible Project Sites



Zarafshon River Basin (transboundary with Uzbekistan, Kyrgyz Republic),  
Nurek HEP catchment (Vakhsh river basin, transboundary with Kyrgyz Republic, Afghanistan)  
Gorno Badakshan Autonomous Oblast (Pyanj river basin, transboundary with Afghanistan, Kyrgyz Republic),



