

WORKSHOP ON FOREST MONITORING AND RESTORATION IN THE CAUCASUS AND CENTRAL ASIA

9 DECEMBER 2020, ONLINE

- **Carl Amirgulashvili**

**Head of Biodiversity and Forestry Department
The Ministry of Environmental Protection and Agriculture of
Georgia**

 Karlo.Amirgulashvili@mepa.gov.ge

FORESTS



National Forest Inventory(NFI)

FORESTS



- Project of NFI started in 2019 with the support of BMZ;



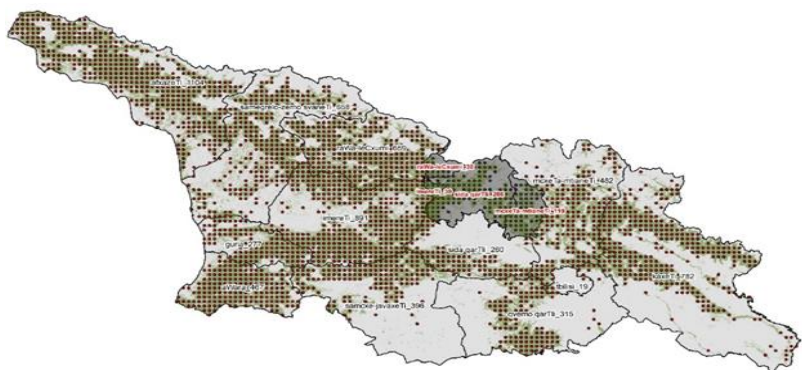
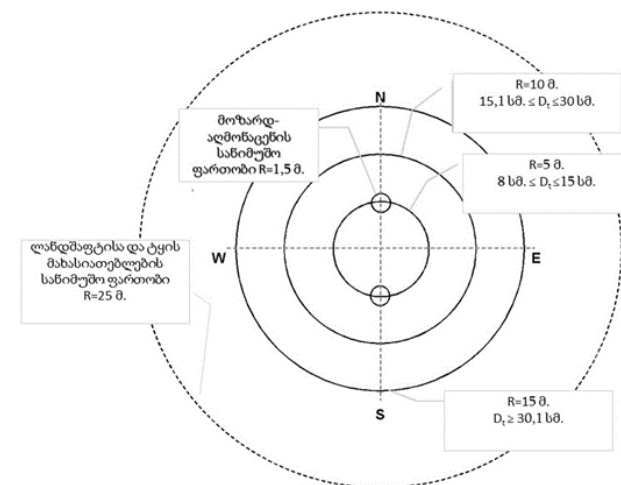
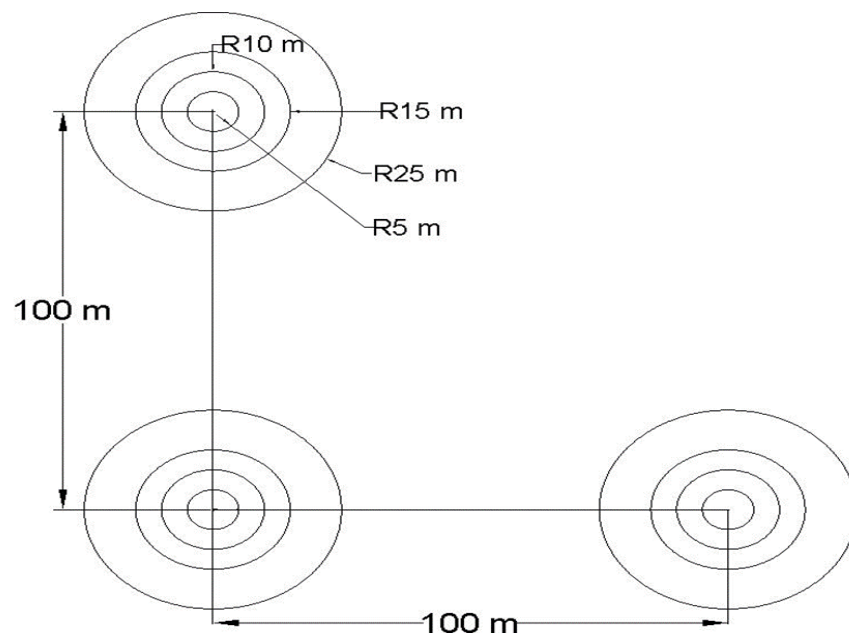
Main goals of NFI :

- ❖ Providing the political and strategic decision makers with the robust data;
- ❖ Reporting on National, Regional and International levels;
- ❖ Support the researches and strengthen the research institutions



NFI Cluster Design Diagram

#	Regions	Clusters
1	Kakheti	272
2	Kvemo Kartli	105
3	Tbilisi	11
4	Mtskheta-Mtianeti	160
5	Shida Kartli	87
6	Samtskhe Javakheti	132
7	Adjara	156
8	Guria	93
9	Imereti	297
10	Racha-Lechkhumi	220
11	Samegrelo-Zemo Svaneti	219
12	Abkhazeti	368
13	Total*	1752



- ✓ One cluster consists of 3 sample plots.
- ✓ Distance from one cluster's center to another cluster's center is 3,6 km.
- ✓ Data from Abkhazia and South Ossetia will be exported remotely .

National Forest Inventory(NFI)

FORESTS



❑ **Areas considered done under NFI(2019-20)**

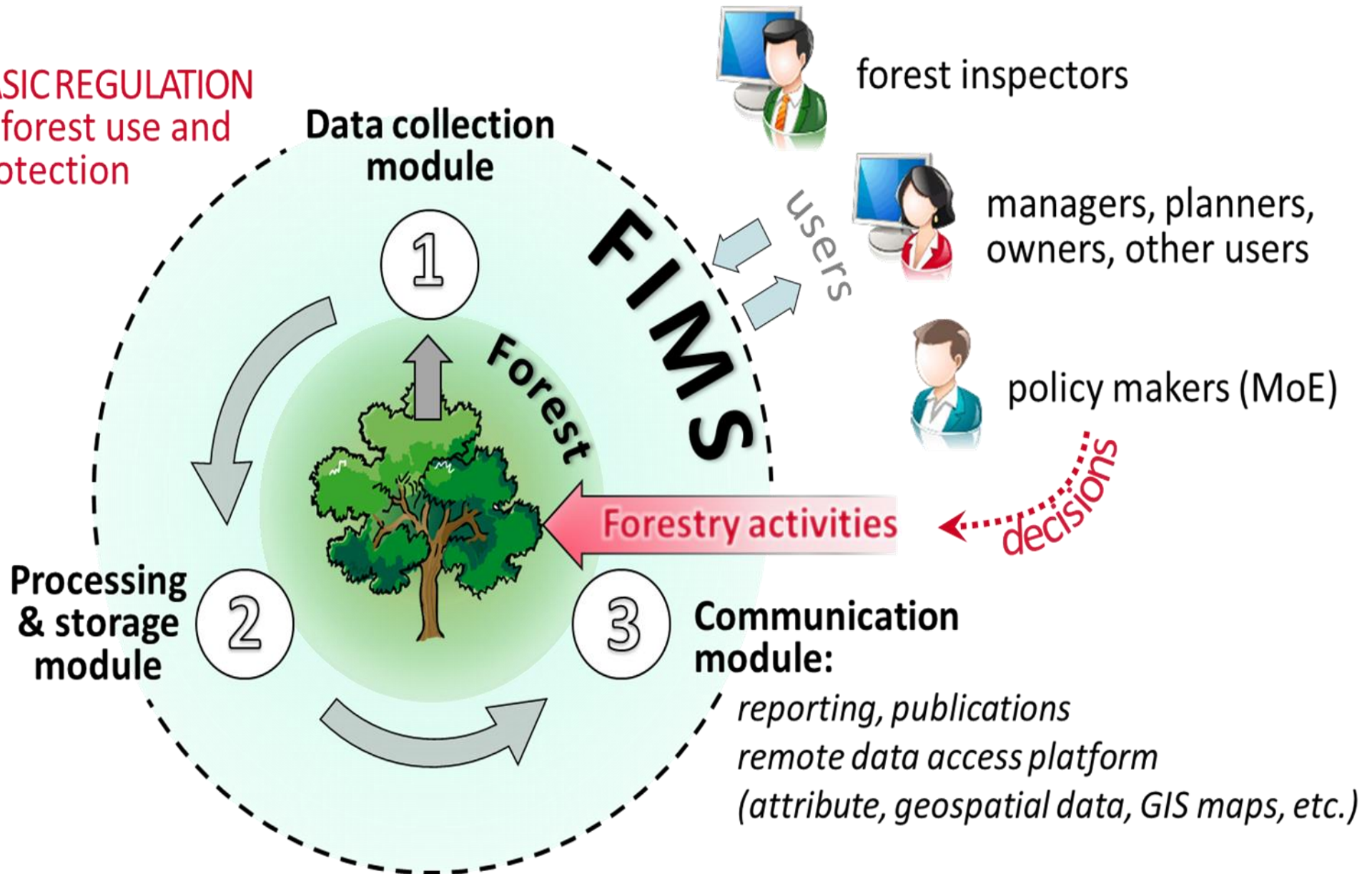
- ❖ NFI has been successfully done in 7 regions of Georgia covering total area of 1,836,443 ha.

❑ **Areas considered work in progress under NFI (2021) and next steps**

- ❑ NFI will be finished in 3 regions of Georgia by 2021
- ❑ After NFI process, gathered information and data will be uploaded in FIMS which will be accessible for everyone who wants to get more details about project's results.

Forest Monitoring and Information System(FIMS)

BASIC REGULATION
of forest use and
protection



Forest Monitoring and Information System(FIMS)

FORESTS



Generated results under FIMS:

- ✓ Adoption of the Inventory program document
- ✓ Adoption of the IT infrastructure module document
- ✓ All the necessary equipment for IT module Has been purchased and is available



Work in progress activities:

- Installation of illegal cutting reporting system
- United data management module (ABACO)
- Setup of IT infrastructure
- Completing Forest Inventory program

Forest and Land Use Atlas of Georgia

FORESTS



- ❖ Forest and Land Use Atlas of Georgia is an online monitoring platform that provides unique analysis tools and information related to forest and land use in Georgia. The Atlas is managed by the Ministry of Environment Protection and Agriculture (MEPA) of Georgia.
- ❖ GEF, WRI, Global Forest Watch.
- ❖ <https://atlas.mepa.gov.ge/?l=en> - Official website of Atlas Georgia



A man with a beard, wearing an orange long-sleeved shirt and a black backpack, stands in a lush green forest. He is looking towards a large, light-colored rock cliff that is partially covered in green vegetation. The scene is split vertically by a white diagonal line. The left side shows the cliff and the text 'THANK YOU'. The right side shows the man looking at the cliff. The foreground is filled with out-of-focus green ferns.

THANK YOU