

# Special topic

## “Wood Energy”

Report of the secretariat

Joint FAO/ECE Working Party on Forest  
Economics and Statistics, 3 May 2006

Douglas Clark and Florian Steierer



Working Party on Forest Economics and Statistics

28<sup>th</sup> Session, 2-4 May 2006, Geneva





# JWPFES 2005

- Provide regional overview based on official “real data”
  - Identify the smallest common denominator
  - Use the UBET terminology
- } Draft questionnaire
- Make recommendations for permanent arrangements





## The regional overview:

### IEA

- “Renewables Annual Questionnaire”
- Energy Statistics and Balances for OECD and non-OECD countries

### Timber Section:

- JFSQ (chem. Pulp and fuelwood)
- Improve some data points (pulp production and black liquor)





## The regional overview:

### Difficulties:

- Energy statistics on wood often aggregated with biomass
  - ➔ precise information difficult
  - ➔ Underestimated share of wood energy.
- Missing information about sources and flows of wood for energy.
- Direct wood energy for private households (data rare)
- Significant difference between annual increment and annual roundwood harvest in many countries.
  - ➔ Underestimation of potential wood supply





## The regional overview:

### Conclusions:

- Wood accounts for 40 –50 % of national roundwood production in most of the countries.
- High oil and gas prices & subsidies are likely to increase the use of wood for energy production.
- The regional overview cannot provide information on wood flows for energy production, yet.

New set of data assessment could help

➔ Draft questionnaire



Working Party on Forest Economics and Statistics

28<sup>th</sup> Session, 2-4 May 2006, Geneva





## The draft questionnaire on wood energy:

### The initial approach:

- Starting point: UBET Wood fuel balance scheme
- After consultation at Hamburg and the List server discussion group radical change:

### The modified approach:

- UBET grid as output grid
- Complex questionnaire for detailed data collection

1<sup>st</sup> version: Data collection with emphasis on wood industry units (m<sup>3</sup>, bulk volume, tons)

2<sup>nd</sup> version: Improvements to enable energy statisticians to contribute to the data collection (Statistics Austria)



Working Party on Forest Economics and Statistics

28<sup>th</sup> Session, 2-4 May 2006, Geneva





## The draft questionnaire on wood energy:

### Results:

- Data from countries showed **wood flows for energy supply on the national level.**
- **Importance of energy generation** for wood processing industries confirmed.

### Conclusion:

- ➔ Without **closer cooperation** between energy, wood and waste sectors we can not hope to improve the quality of wood energy data
- ➔ UNECE/FAO Timber Section could **fill a niche** linking the wood and energy sectors





## Possible ways forward (permanent arrangements ?)

- ➔ Data collection based on publicly available sources
  - We could expand to collect national sources and improve modelling
- ➔ Continue the data collection as at present
  - Use “draft questionnaire”, distribute to all countries and collect information
- ➔ Set up a new “Joint Questionnaire” on wood energy
  - Collaborate intensively with other organizations to improve data and achieve objectives of all







## Possible ways forward (permanent arrangements ?)

... all of this would require

- active cooperation with member countries
- improved data collection on wood energy at the national level (e.g. Austria, Germany, France)
- time / staff



Working Party on Forest Economics and Statistics

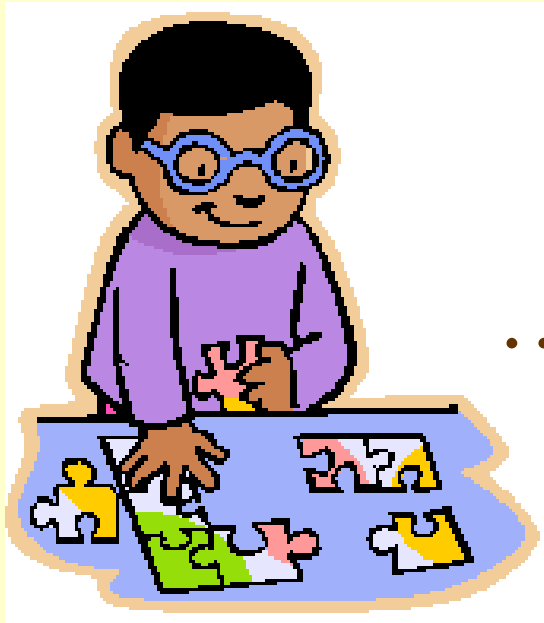
28<sup>th</sup> Session, 2-4 May 2006, Geneva





It is like a puzzle...

...once you have set up the frame, you  
can stick in the pieces...



... and with patience you can  
create a complete picture



Working Party on Forest Economics and Statistics

28<sup>th</sup> Session, 2-4 May 2006, Geneva



# Specific questions

- Do countries have the data to compile national wood energy frames (main sources and users of wood for energy)?
  - ➔ If not, what are the reasons?
- Are there any plans to improve statistics on wood energy?
- How does the Working Party want the secretariat and national correspondents to continue the work on wood energy?
  - ➔ Is the questionnaire taking the right approach?
- Should the secretariat revise the questionnaire and undertake a comprehensive survey of all ECE countries for one year?
- Would a Joint Wood Energy Questionnaire be an applicable solution? If yes, which organisations should be involved?
- Is UBET the appropriate terminology for future data collection? Any alternatives?
- What level of commitment would the Working Party wish to see and what resources can be made available?

