

New role for official statistics in Times of Covid-19

Branko Josipović

Biggest challenges

PREDICTION

Prediction of trends of the main economic indicators



INITIATIVE

Helping government in creating appropriate measures to mitigate pandemic effect



ANALYSIS

Analysing of taken measures and monitoring how effective they are



COMMUNICATION

Establishing strong and mutual interactive communication with respondents

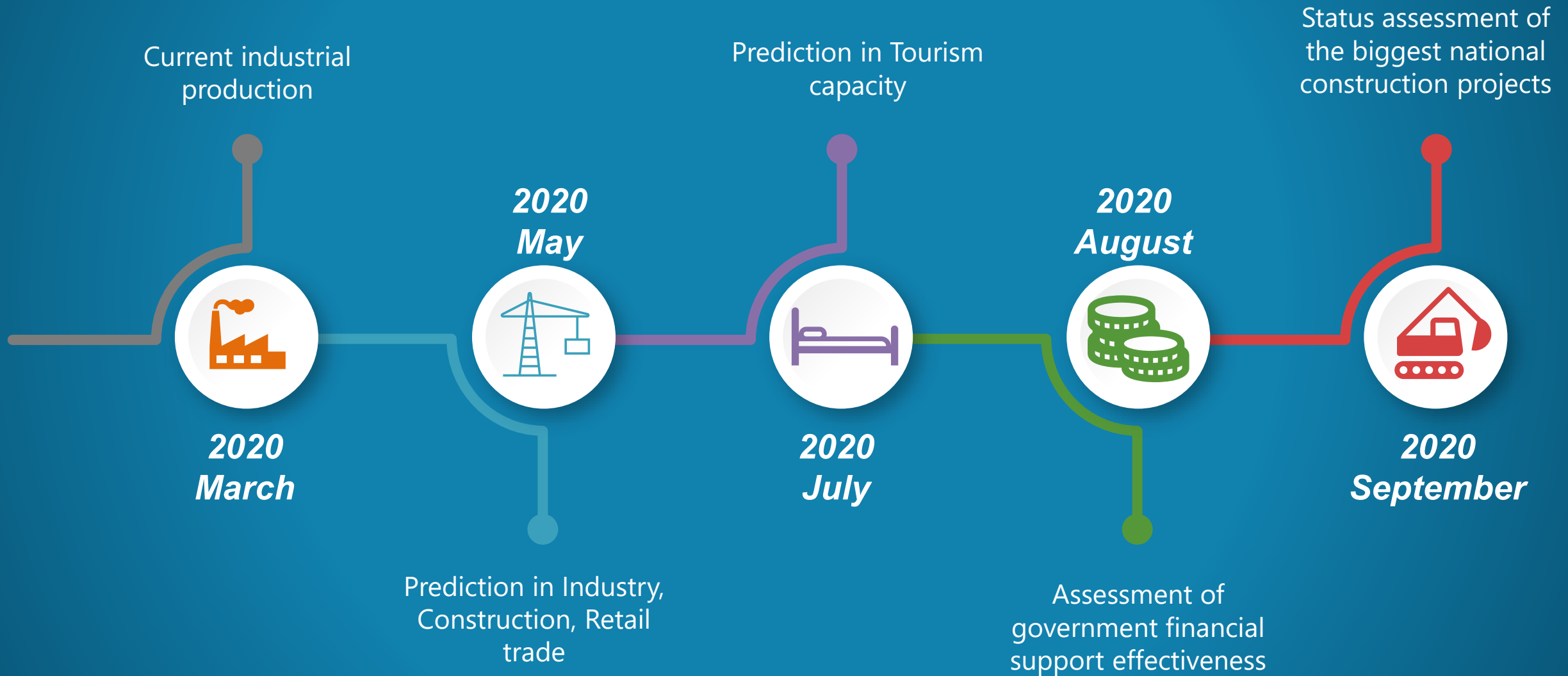


BURDEN

Putting as little burden as possible on respondents



Rapid survey timeline



4 Steps Layout for Rapid surveys system

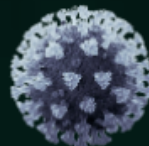
01 System for developing web questionnaires

02 Monitoring survey activities in the real-time.

03 Automatically building interactive results report.

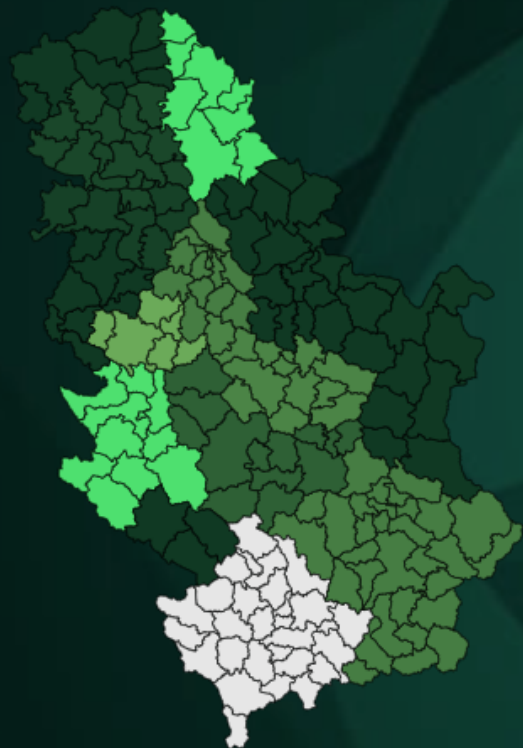
04 Updating government and policy makers with most relevant information





Data from incomplete coverage are presented at the overall and territorial organization level
(Regional statistical centres - each statistical centre with covered municipalities)

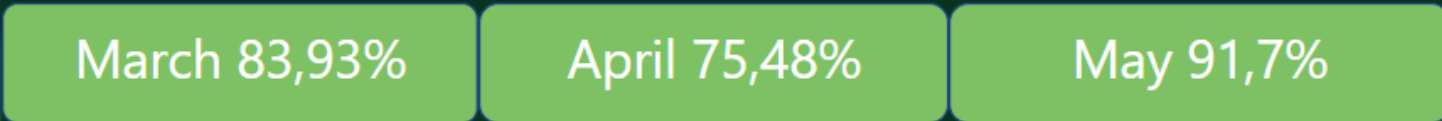
Map of Regional statistical centres in Serbia



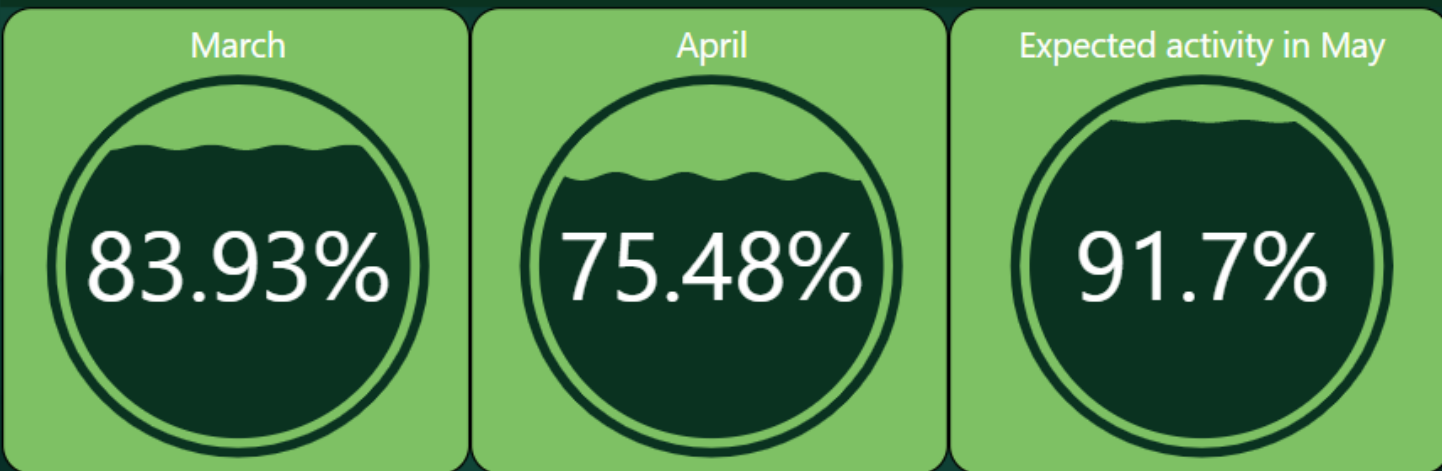
Municipality within Regional statistical centre

- Ada
- Aleksandrovac
- Aleksinac
- Alibunar

Assessment of construction activities / Republic of Serbia



Assessment of construction activities / Regional statistical centre



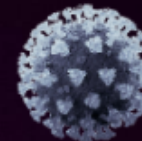
NACE Rev. 2	NACE Activity
23	Manufacture of other non-metallic mineral products
25	Manufacture of fabricated metal products, except machinery and equipment
28	Manufacture of machinery and equipment n.e.c.
41	Construction of buildings
42	Civil engineering
43	Specialised construction activities
70	Activities of head offices; management consultancy activities
71	Architectural and engineering activities; technical testing and analysis

Serbia

Regional statistical centre

- Belgrade
- Kragujevac
- Kraljevo
- Leskovac
- Niš
- Novi Pazar
- Novi Sad
- Pančevo
- Šabac
- Smederevo
- Sremska Mitrovica
- Subotica
- Užice
- Valjevo
- Zaječar
- Zrenjanin

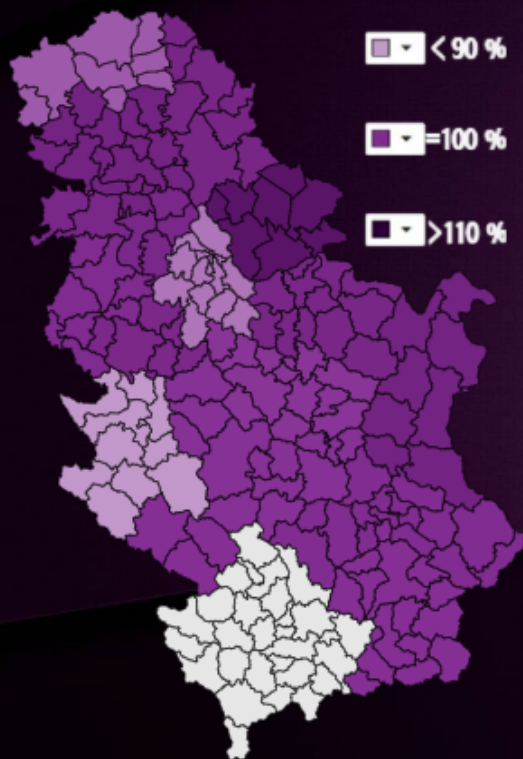




Data from incomplete coverage are presented at the overall and territorial organization level
(Regional statistical centres - each statistical centre with covered municipalities)

Serbia

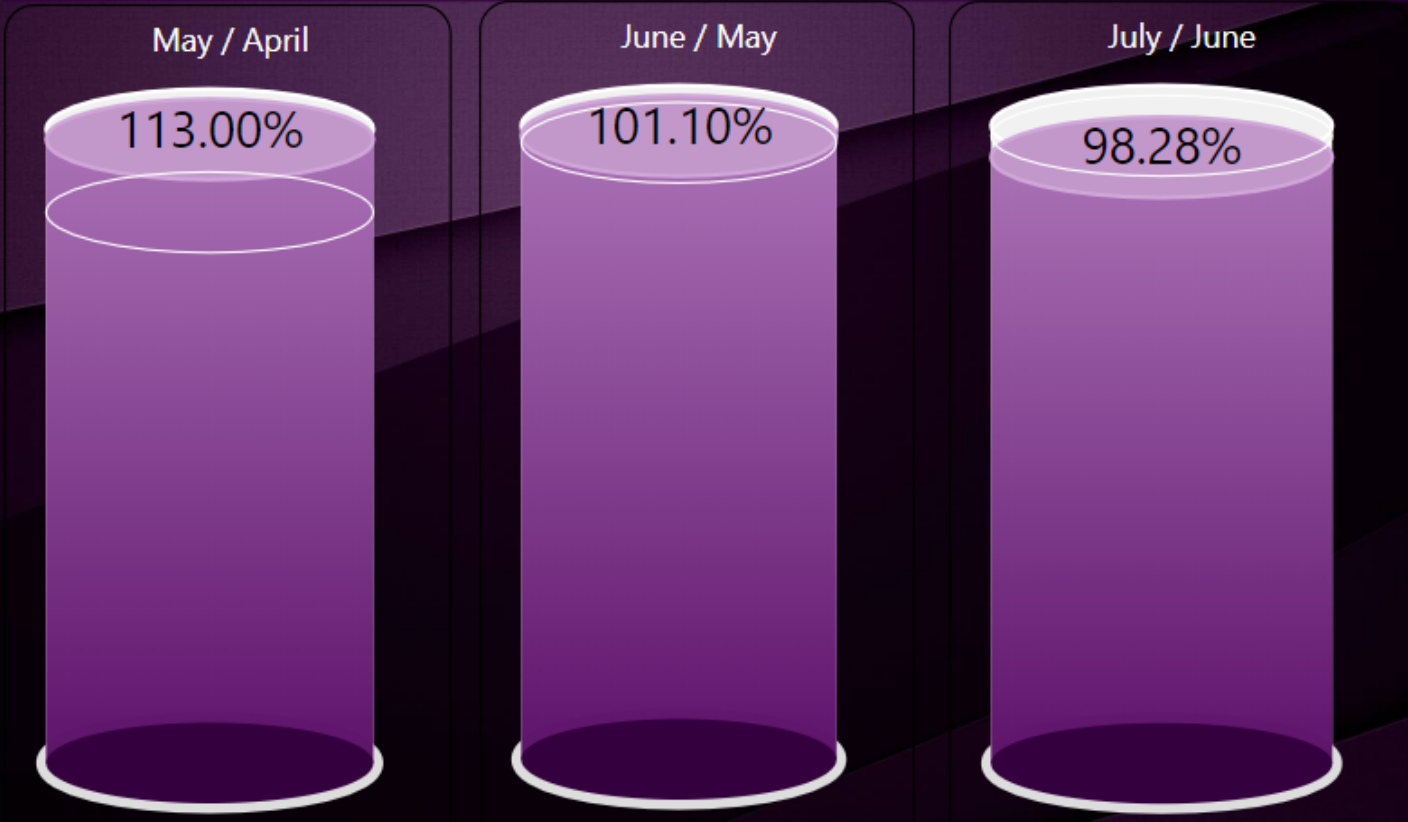
Map of Regional statistical centres in Serbia



Turnover Indices in Retail Trade in Republic of Serbia (%)



Turnover Indices in Retail Trade in Regional statistical centre (%)



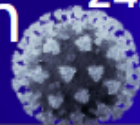
Regional statistical centre

- Belgrade
- Kragujevac
- Kraljevo
- Leskovac
- Nis
- Novi Pazar
- Novi Sad
- Pančevo
- Sabac
- Smederevo
- Sremska Mitrovica
- Subotica
- Uzice
- Valjevo
- Zajecar
- Zrenjanin

Municipality within Regional statistical centre

- Ada
- Aleksandrovac
- Aleksinac
- Alibunar




S e r b i a

Data from incomplete coverage are presented at the overall and territorial organization level
(Regional statistical centres - each statistical centre with covered municipalities)

 Regional statistical
centre

Belgrade

Kragujevac

Kraljevo

Leskovac

Nis

Novi Pazar

Novi Sad

Pancevo

Sabac

Smederevo

Sremska Mitrovica

Subotica

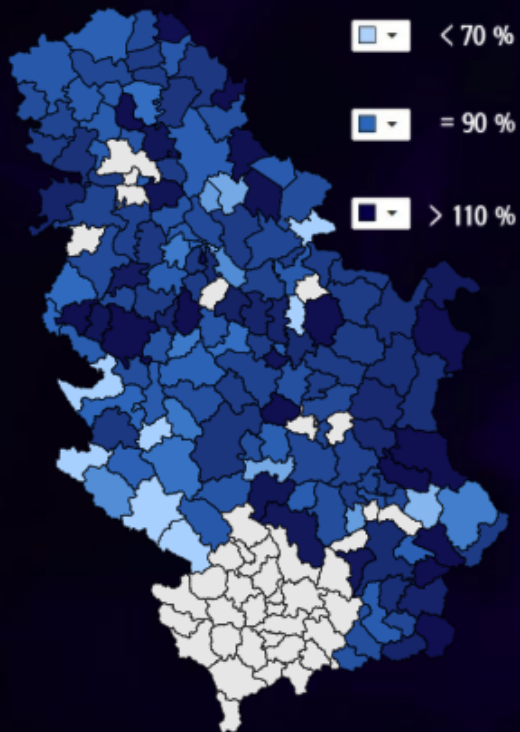
Uzice

Valjevo

Zajecar

Zrenjanin

RESET

 Expected production in July by
Regional statistical centres

 < 70 %

 = 90 %

 > 110 %

Republic of Serbia

 Production in May compared
to February 2020 is 83.83%

 Production in Jun compared to
May 2020 is 104.31%

 Expected production in July
compared to June is 97.21 %

Regional statistical centre / Municipality

 Production in May compared to
February 2020.

83.83%

 Production in Jun compared to
May 2020.

104.31%

 Expected production in July
compared to Jun 2020.

97.21%

NACE Rev.2

NACE Activity

05	Mining of coal and lignite
06	Extraction of crude petroleum and natural gas
07	Mining of metal ores
08	Other mining and quarrying
10	Manufacture of food products
11	Manufacture of beverages
12	Manufacture of tobacco products
13	Manufacture of textiles
14	Manufacture of wearing apparel

Municipality within Regional statistical centre

Ada

Aleksandrovac

Aleksinac

Alibunar

Apatin



Quick links



Let's start from the beginning!



Loan providers



Liquidity loan



Investment loan



Need a loan?



Loans by NACE sectors

Conclusion, lesson learned

Maintain direct and interactive communication with respondents.

Minimize the time for publishing results.

Explore possibilities of introducing new but less complex surveys.

Official statistics should be a key player
In decision making support process.

New role for official statistics in Times of Covid-19

Branko Josipović
branko.josipovic@stat.gov.rs

Thank you!

2020 Virtual Event: Data Collection in Times of Covid-19, Virtual, 5-8 October 2020

<https://powerbireportmvc.azurewebsites.net/Reports/IndexENG>