



Panel Session A: Integrating Location in Statistical Production

Marie Haldorson
Director, Statistics Sweden



facebook.com/statistiskacentralbyranscb



[@SCB_nyheter](https://twitter.com/SCB_nyheter)



[statistiska_centralbyran_scb](https://www.instagram.com/statistiska_centralbyran_scb)



www.linkedin.com/company/scb





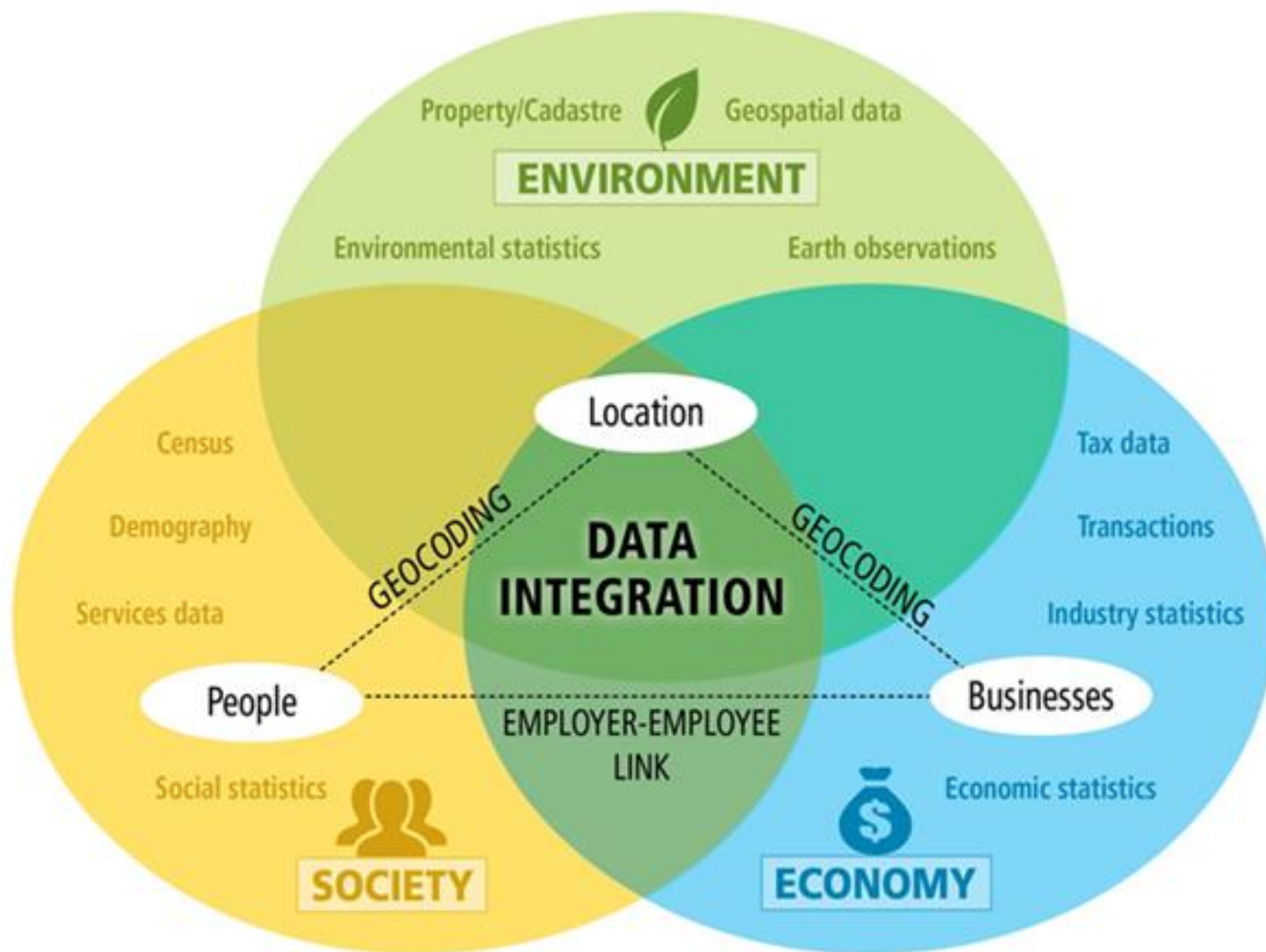
Agenda

- Introduction
- The Statistical Geospatial Framework
- GEOSTAT 2 – Testing GSBPM
- Need for more work on standards!



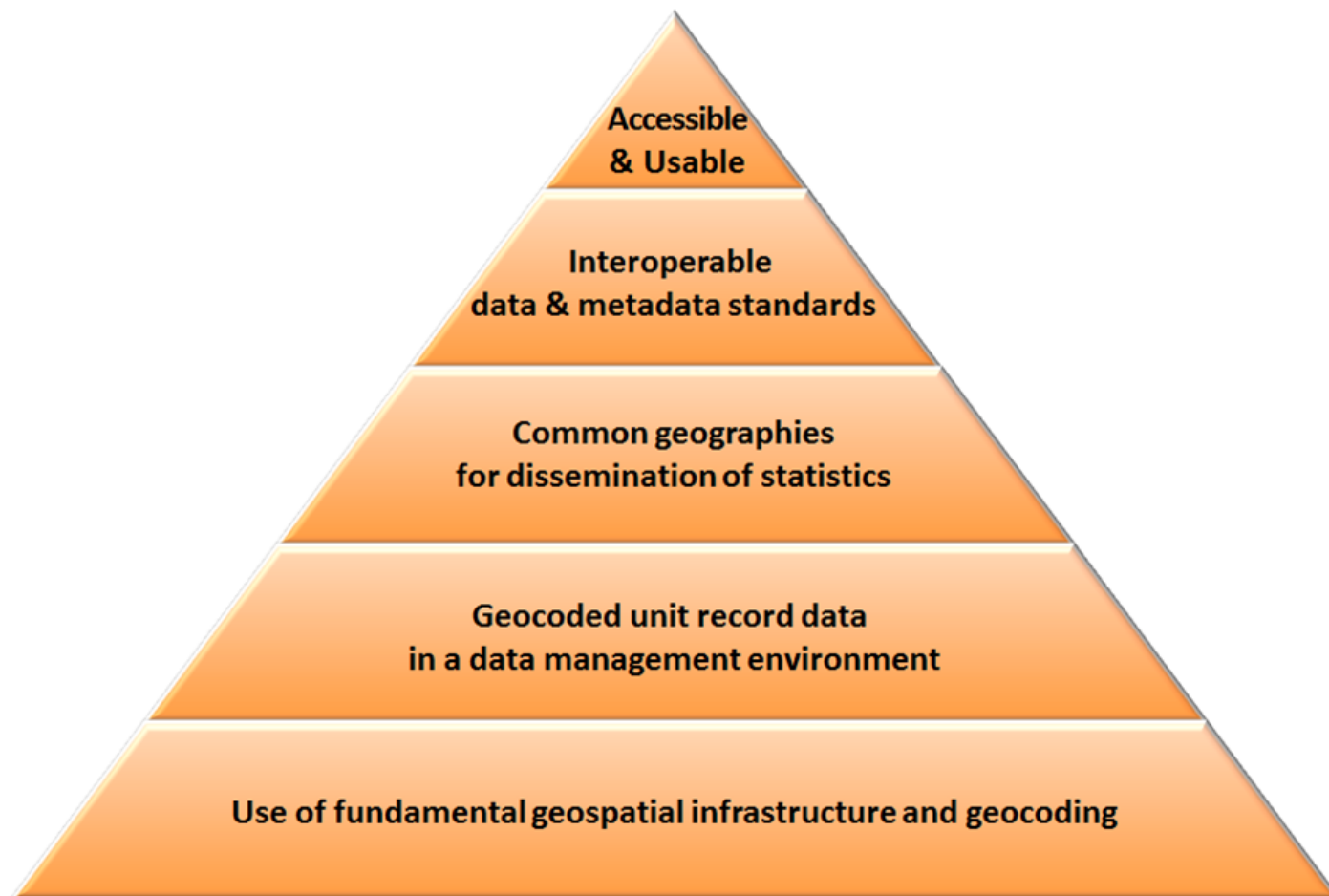


Introduction





Integrating statistical and geospatial information





Principle 4:

Interoperable data and metadata standards

Statistical

- GSIM
- GSBPM
- SDMX
- DDI

Geospatial

- General Feature Model (GFM)
- ISO 19115 Metadata standard
- Application specific standards





Contents of GEOSTAT 2



[GEOSTAT](#) [DATA](#) [ABOUT EFGS](#) [SHARE YOUR KNOWLEDGE](#)

EUROPEAN FORUM FOR GEOGRAPHY AND STATISTICS





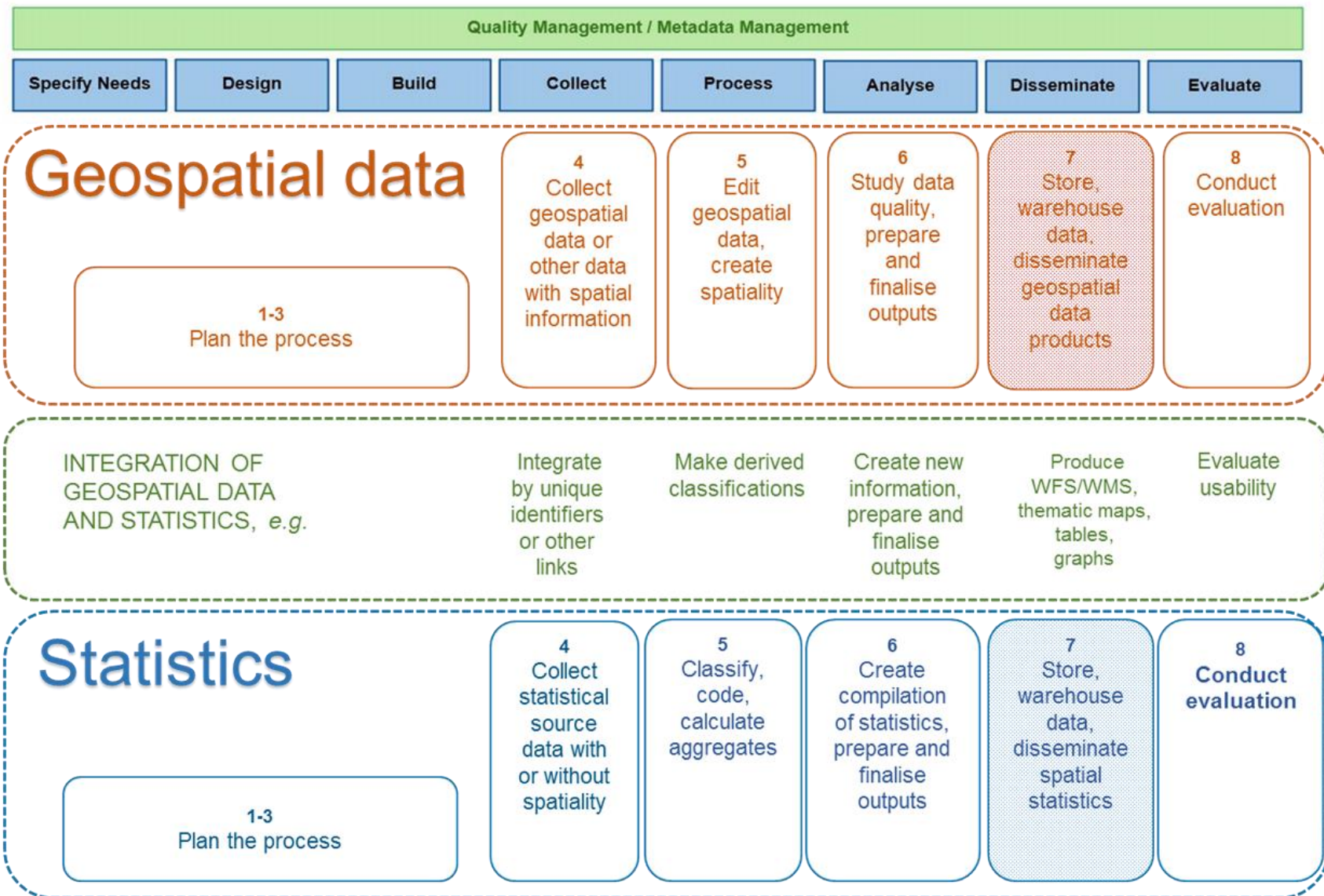
Production of Spatial Statistics: An applied sketch of GSBPM

Terms used:

Geospatial data: Data with direct reference to a specific location on the surface of the Earth (points, areas, lines)

Spatial statistics: Geospatial data with statistics or table data with location information.

General Statistical Business Process Model: <http://www1.unece.org/stat/platform/display/GSBPM/GSBPM+v5.0>





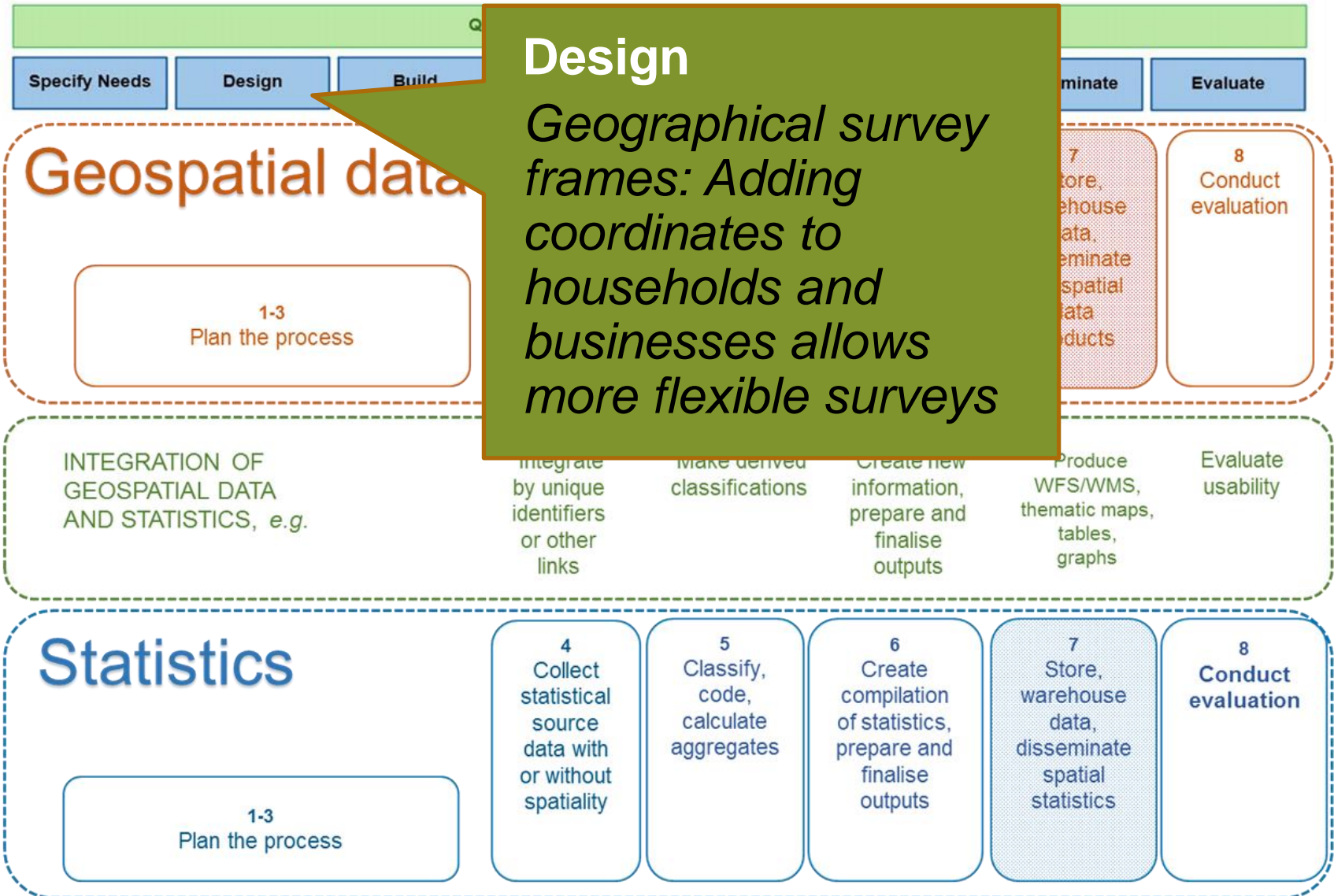
Production of Spatial Statistics: An applied sketch of GSBPM

Terms used:

Geospatial data: Data with direct reference to a specific location on the surface of the Earth (points, areas, lines)

Spatial statistics: Geospatial data with statistics or table data with location information.

General Statistical Business Process Model: <http://www1.unece.org/stat/platform/display/GSBPM/GSBPM+v5.0>





Production of Spatial Statistics: An applied sketch of GSBPM

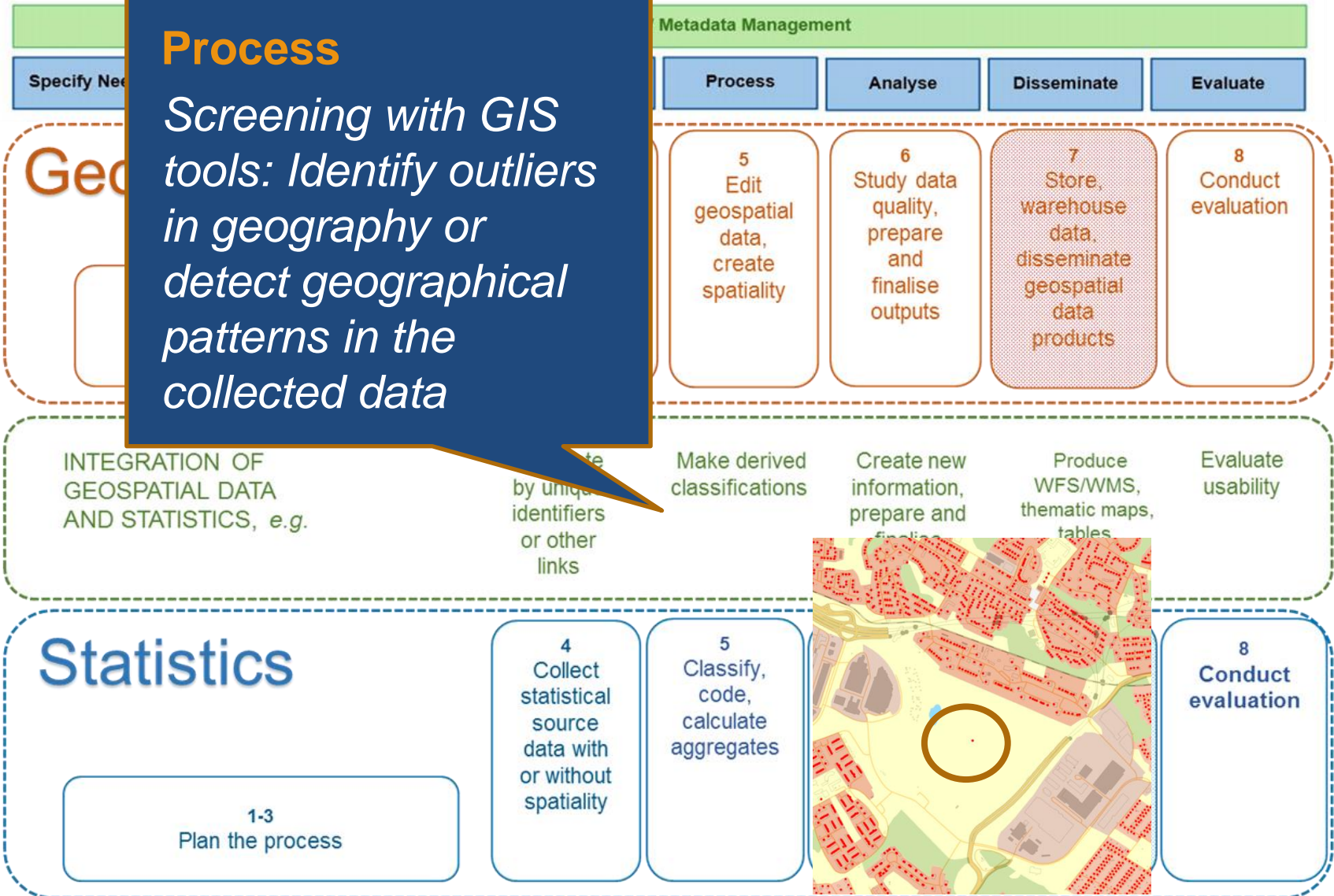
Terms used:

Geospatial data: Data with direct reference to a specific location on the surface of the Earth (points, areas, lines)

Spatial statistics: Geospatial data with statistics or table data with location information.

General Statistical Business Process Model: <http://www1.unece.org/stat/platform/display/GSBPM/GSBPM+v5.0>

Process
Screening with GIS tools: Identify outliers in geography or detect geographical patterns in the collected data





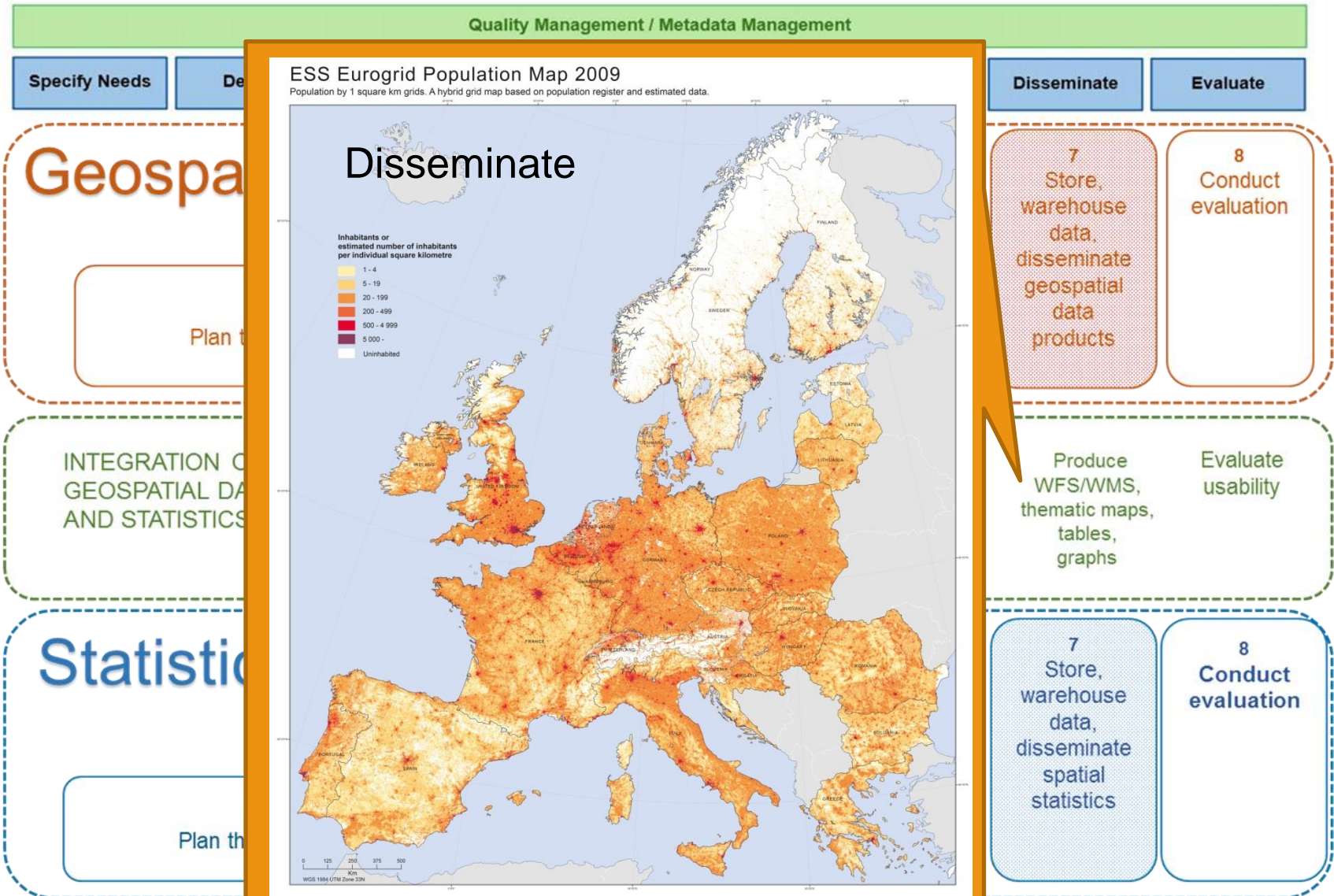
Production of Spatial Statistics: An applied sketch of GSBPM

Terms used:

Geospatial data: Data with direct reference to a specific location on the surface of the Earth (points, areas, lines)

Spatial statistics: Geospatial data with statistics or table data with location information.

General Statistical Business Process Model: <http://www1.unece.org/stat/platform/display/GSBPM/GSBPM+v5.0>





Story mapping

- The GEOSTAT 2 team identifying tasks when producing grid statistics!





Lessons learned so far (SE)

- Process modeling show that GSBPM is useful for processes involving geospatial data.
- GEOSTAT 2 has enabled increased collaboration between process owners and geospatial experts at Statistics Sweden.
- The GSBPM should include more concepts and a terminology that links to geospatial activities.
- The GSBPM could also benefit from including examples of "Geospatial statistical output"!





Lessons learned so far (FR)

- The GSBPM is useful.
- The GSBPM should include specific processes or sub-processes dedicated to the integration of geospatial data in statistics.
- Process needed to maintain, update, ensure consistency of authoritative geospatial data and statistics over time?
- Managing confidentiality is one of the big issues to manage geospatial statistics, it might need a specific process?
- Specific attention should be paid on terminology!





Need for more work on standards!

- Include descriptions and terminology for **integration** of statistical and geospatial data in the GSBPM!
- Describe geospatial processes?
- Principle 4 in the Statistical Geospatial Framework: Initiatives that can advance interoperability?





facebook.com/statistiskacentralbyranscb



[@SCB_nyheter](https://twitter.com/SCB_nyheter)



[statistiska_centralbyran_scb](https://instagram.com/statistiska_centralbyran_scb)



www.linkedin.com/company/scb



There is a distinction between..

- Geospatially enabled data or statistics - statistical or administrative data linked to a geospatial object
- Geospatial infrastructure data used to geospatially enable statistics
- Geospatial datasets used to create statistical content

*Suggested terminology currently up for discussion
(Australian Bureau of Statistics)*



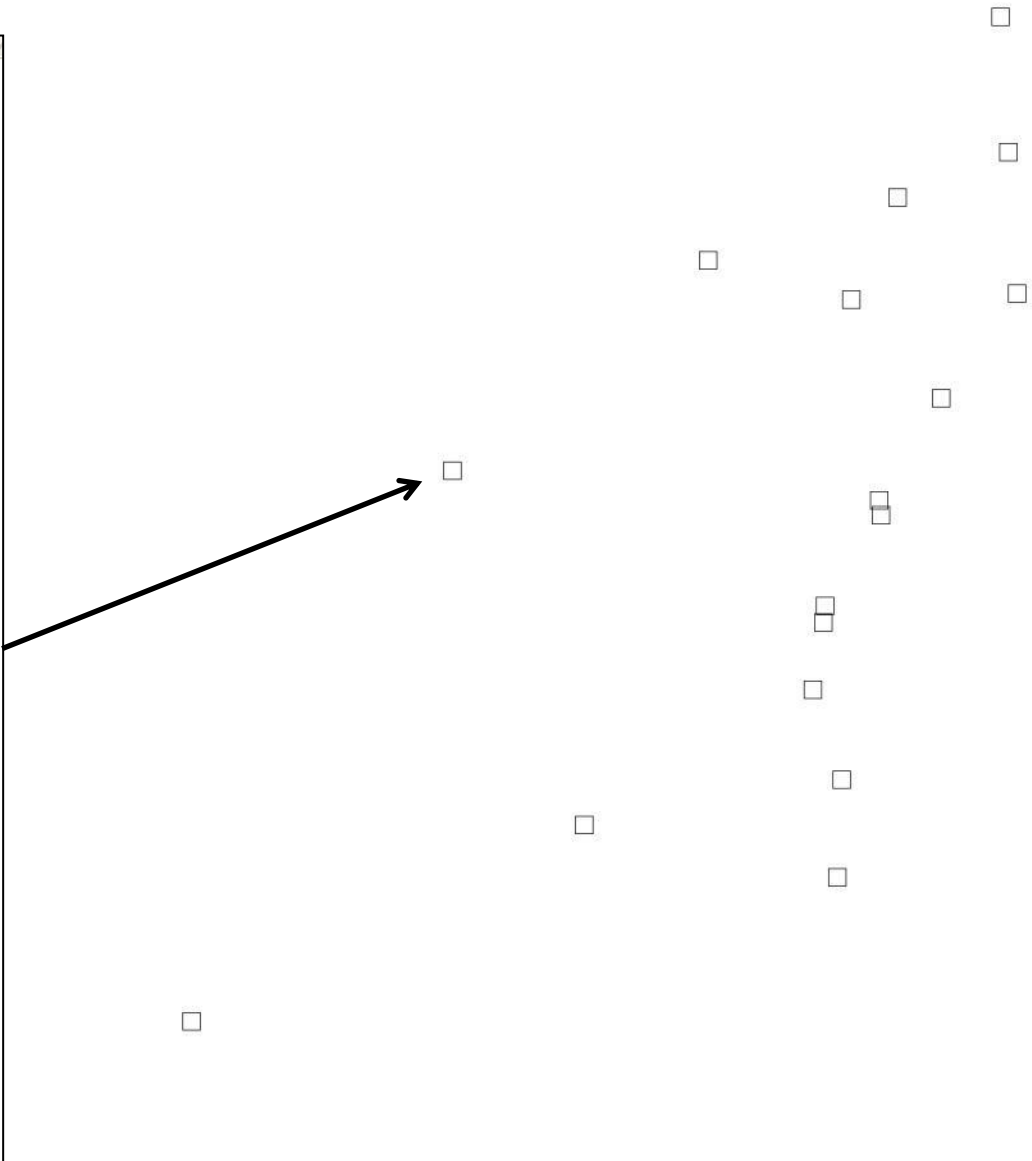


Geospatially enabled data

- **Fine level** - unit record data linked to a coordinate, small linear object or small area geography building block
- **Mid level** - unit record data linked to a large geographic unit or aggregate data linked to a small area geography building block
- **Course level** - aggregate data linked to any medium or large geographic unit



| | |
|---------------|---------|
| Lan: | 01 |
| Kommun: | 0192 |
| Forsamling: | |
| idtaxenhet: | |
| FastBet: | |
| Nyko: | |
| PostNr: | |
| Idegendom: | |
| NrSortSamf: | 0 |
| JurForm: | |
| JurFormGrp: | 6 |
| TypEgendom: | F |
| NrEgendomCFD: | |
| KodFastsamf: | 1 |
| Typkod: | 432 |
| Typkod1: | 4 |
| ArTaxFrom: | 2007 |
| ArealFast: | 191 785 |
| ArealTot: | 191 785 |
| ArealOmark: | 0 |
| nordkordRT90: | 1 614 |
| ostkordRT90: | 6 537 |
| SAMS: | |
| Tatort: | 0000 |
| Smaort: | 0000 |
| Befolkning: | 0 |
| Bebyggd: | 1 |
| SamfVal: | 1 |
| IGM: | 1 |
| VardeMark: | |
| VardeBygg: | |
| Varde: | |
| Nyckelid: | |



Geospatially enabled data



Geospatial infrastructure data

- Address or Building registers with coordinate references
- Parcel or property databases
- Topographic datasets
- Administrative, statistical and grid geographies





Geospatial infrastructure



Geospatial datasets

- Datasets used to create statistical content (geospatial statistics)
- To enhance (i.e. add variables to) existing statistical and administrative datasets (e.g. distance to green space: road network, parklands, etc.)
- More elaborate production of new statistical content (e.g. land accounts: cadastral information - land use and value, gridded land cover from Earth Observation, etc.)





Geospatial datasets