

INF.2  
8 September 2011

ENGLISH ONLY

**UNITED NATIONS  
ECONOMIC COMMISSION FOR EUROPE  
CONFERENCE OF EUROPEAN STATISTICIANS**

**EUROPEAN COMMISSION  
STATISTICAL OFFICE OF THE  
EUROPEAN UNION(EUROSTAT)**

**ORGANISATION FOR ECONOMIC COOPERATION  
AND DEVELOPMENT (OECD)  
STATISTICS DIRECTORATE**

**Workshop on Statistical Metadata (METIS)**

(Geneva, Switzerland, 05-07 October 2011)

**INFORMATION NOTICE No. 2**

The Workshop will be held in **Room XI**, Palais des Nations, Avenue de la Paix, Geneva, Switzerland, from 05-07 October 2011.

**I. MEETING DOCUMENTS**

1. Presentations and papers received for the METIS 2011 Workshop will be loaded on the meeting web site at: [www.unecce.org/stats/documents/2011.10.metis.html](http://www.unecce.org/stats/documents/2011.10.metis.html). Papers and presentations will be added to the website once they have been received and formatted for publication.

**II. THE AGENDA AND FORMAT**

2. Each session will consist of 3 to 3.5 hours with translation services available from 9:30 am to 12:30 p.m. and 2:30 p.m. to 5:30 p.m.

3. The workshop will consider the following substantive topics:

- (i) Overview of DDI
- (ii) Implementing DDI in statistical organisations;
- (iii) National implementations of the GSBPM and related models;
- (iv) The GSBPM and process quality management;
- (v) Metadata flows within the GSBPM;
- (vi) International projects and initiatives using the GSBPM as a framework for their activities.

4. The workshop is proposed to be a participative event with a focus on dialogue between the attendees and the session leaders. In this spirit, we request that attendees consider any questions that they may have in relation to the GSBPM, for example in relation to implementation, future directions of the model or any other questions you would like to raise. Questions forwarded to the organisers by the 19<sup>th</sup> of September can be included in a proposed Questions and Answers panel discussion

### III. ACCESS TO THE PALAIS DES NATIONS

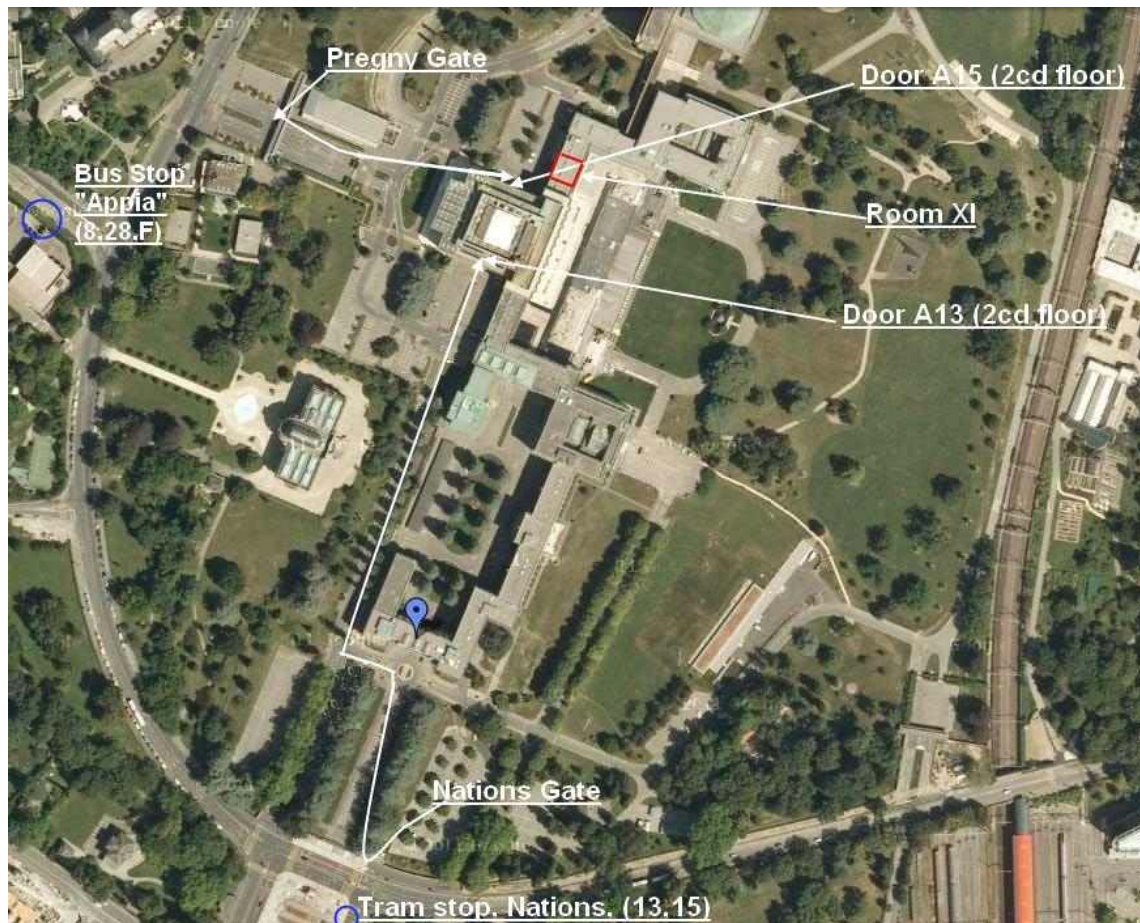
5. On your first day, you should go to the security building at the “Pregny Gate” (following the white arrows on the map). You will need to show your passport. You may also be asked for a copy of your registration form, so please bring this with you. You will be given a security badge which will be valid for the entire conference. Please allow plenty of time for the security control (at least 1 hour is recommended), as there can be long queues at busy times.

6. You may only bring into the Palais the type of bags that are normally considered as hand luggage by airline companies, e.g. computer bags, rucksacks and hand bags. There is limited storage space for larger bags at the Pregny Gate security building, but this is often full.

7. Delegates arriving on Wednesday 05 October for the METIS 2011 Workshop should note that this workshop is scheduled to start at 9:30. Access to the meeting room will be possible from 08:00.

8. When you have your security badge, you are free to enter and leave the grounds of the Palais des Nations by any of the gates. You may find it more convenient to use the “Nations Gate”, following the white arrows on the map.

9. Map of United Nations Offices in Geneva with directions to the conference room



17. Inside the Palais there is a bank with cash machine, a travel agency, a kiosk and a United Nations book and souvenirshop, all located on the second floor near door E40. There are also several bars and restaurants, a post office, and a duty-free supermarket.

#### **IV. PUBLIC TRANSPORT IN GENEVA**

##### *Free travel from the airport*

18. Free tickets for public transport are available from a machine in the baggage collection area (just before passing through customs). This ticket allows you free use of public transport (train, tram, bus, boat) within Geneva for up to 80 minutes. In the event of a ticket inspection, anyone holding this type of ticket may be asked to show their airline ticket.

19. Geneva Airport is approximately four kilometres from the city centre. The train is the most efficient way to get into the city centre. Follow the signs to the airport railway station from the arrivals area. Trains leave approximately every 15-20 minutes, and all stop at the central Geneva-Cornavin station. The journey takes six minutes.

20. It is also possible to get from the airport directly to the Palais des Nations by bus. Line 28 (direction “Jardin Botanique”) is the most convenient for the Pregny Gate, and stops at “Appia” then “Nations”. Line 5 also runs from the airport to the city centre via “Nations”.

##### *Free travel during your stay in Geneva*

21. Your hotel should give you a “Geneva Transport Card”, which allows you to use public transport in Geneva free of charge during the period of your stay.

##### *From the city centre / Geneva-Cornavin station to the Palais des Nations*

22. On your first day, when you have to collect your security pass, bus 8 from Cornavin station to “Appia” is probably the easiest. Buses run every 7-8 minutes on this line at peak times. On other days, trams 13 and 15 to “Nations” may be more convenient. To walk from Cornavin station to the Place des Nations takes around 30 minutes (plus another 5 minutes to the Pregny Gate). For a more pleasant, but longer walking route, follow path along the side of the lake until you get to the offices of the World Trade Organization, then up the hill to the Place des Nations.

##### *More information*

23. For more information about public transport in Geneva, including time-tables, please see [www.tpg.ch](http://www.tpg.ch). A plan of the whole public transport network is available at: <http://www.tpg.ch/fr/horaires-et-reseau/plans-du-reseau/plan-general-reseau-tpg.php>

#### **V. SOCIAL PROGRAMME**

24. There will be a subscription dinner for METIS Workshop participants on Thursday 06 October with details to follow.

#### **VI. TOURIST INFORMATION**

25. General information about Geneva: [www.geneva-tourism.ch](http://www.geneva-tourism.ch)

**VII. FURTHER INFORMATION****UNECE**

Mr. Steven Vale  
Statistical Division, United Nations Economic Commission for Europe  
Palais des Nations  
1211-GENEVA 10  
Switzerland  
Tel: +41-22 917 32 85  
Fax: +41-22 917 00 40  
e-mail: [steven.vale@unece.org](mailto:steven.vale@unece.org)

**Eurostat:**

Mr. August Götzfried  
EUROSTAT  
L-2920 LUXEMBOURG  
Luxembourg  
Tel: +352 4301 34432  
Fax: +352 4301 31098  
e-mail: [august.goetzfried@ec.europa.eu](mailto:august.goetzfried@ec.europa.eu)

**OECD:**

Mr Trevor Fletcher  
Statistics Directorate, OECD  
2, rue André Pascal  
75775 PARIS Cedex 16  
France  
Tel: +33 01 45 24 16 44  
Fax: +33 01 44 30 62 99  
e-mail: [trevor.fletcher@oecd.org](mailto:trevor.fletcher@oecd.org)