



HUNGARIAN
CENTRAL
STATISTICAL
OFFICE 

The Hungarian experience in implementing European Regulation about seasonal products

26 May 2014, Geneva
Workshop: Treatment of seasonal products

Borbála Mináry
National account Department
Consumer prices Section

Definitions – Estimation of out-of-season prices

Counter-seasonal estimation means the estimation of a price for a product-offer of a product that is out-of-season so that:

- in the first month of the out-of-season period, the estimated price is equal to a **typical price** observed in the previous in-season period, and,
- from the second month, the estimated price is equal to the estimated price for the preceding month, adjusted by the change in observed prices on average over **all seasonal products that are in-season** in the same subdivision of COICOP/HICP.

All-seasonal estimation means the estimation of a price for a product-offer of a product that is out-of-season so that:

- in the first month of the out-of-season period, the estimated price is equal to a **typical price** observed in the previous in-season period, and,
- from the second month, the estimated price is equal to the estimated price for the preceding month, adjusted by the change in observed prices on average over **all available products** in the same subdivision of COICOP/HICP.

Definitions – Weights

Strict annual weights index means a price index using weightings that do not differ between months within the same year at all levels of index calculation.

Class-confined seasonal weights index means a price index using weightings that within the same year:

- do not differ between months for any COICOP/HICP subdivision taken as a whole,
- do not differ between months for products within any COICOP/HICP subdivision that does not contain any seasonal product,
- within the in-season period do not differ between months for products within any COICOP/HICP subdivision that contains seasonal products, except to the extent that it is necessary to allow for month-on-month changes in the composition of the basket.



Fruits

Hungarian practise before 2011

Variable weights index means a price index using weightings that within the same year:

- do not differ between months for any COICOP/HICP subdivision taken as a whole,
- but inside the subdivision differ between months for any product which has seasonal pattern.

Estimation of a price for a product that is out-of-season:

- from the **first month**, the estimated price is equal to the last observed or estimated price for the last month, adjusted by the change in observed prices on average over **all available products** in the same subdivision of COICOP/HICP.

Different methods

- **Method A**

Variable weights, all seasonal estimation (the estimation differs between the first and the remaining months of the out-of-season period)

- **Method B**

Fixed weights, all seasonal estimation

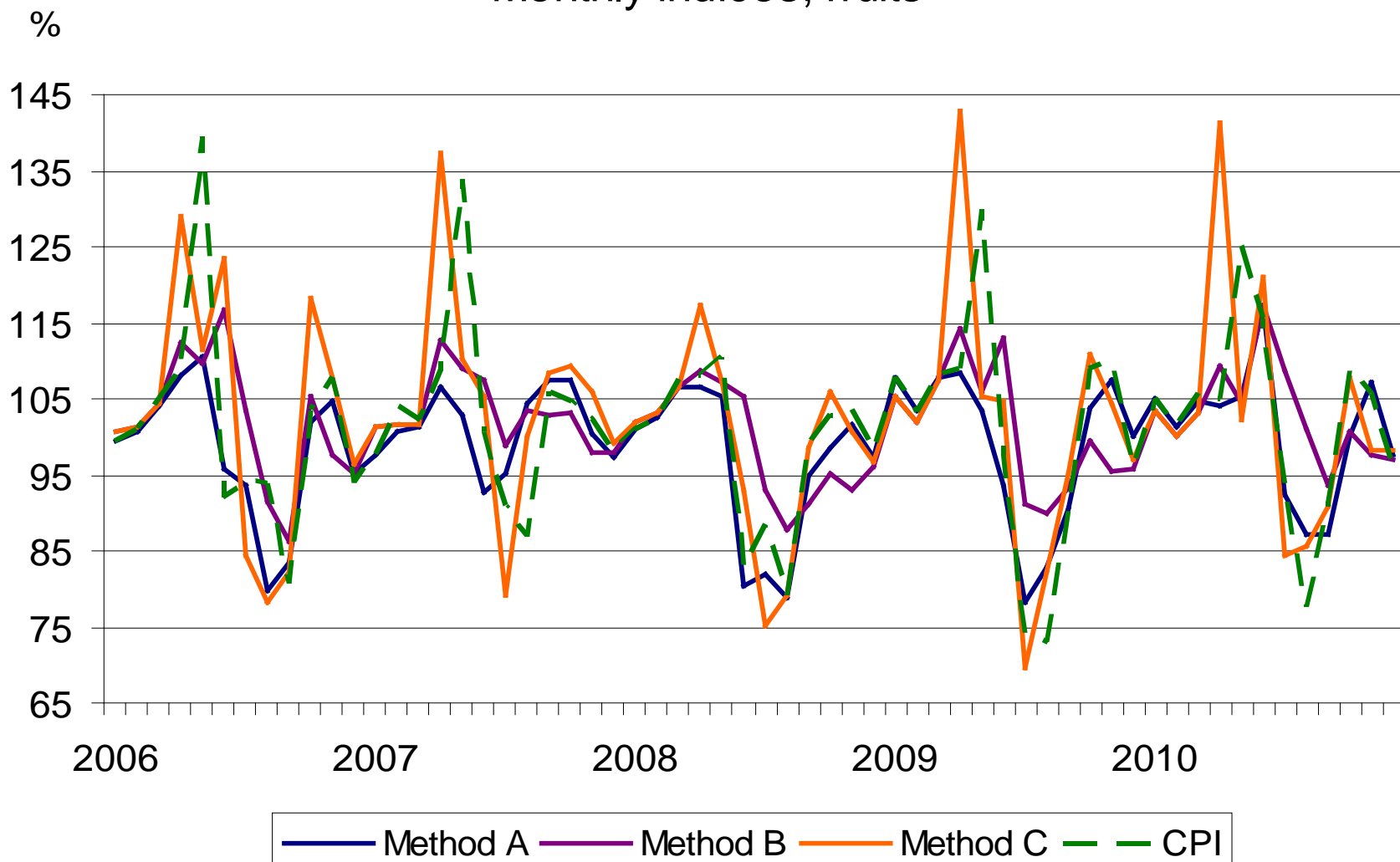
- **Method C**

Class-confined seasonal weights, all seasonal estimation

- **CPI (Hungarian practise before 2011)**

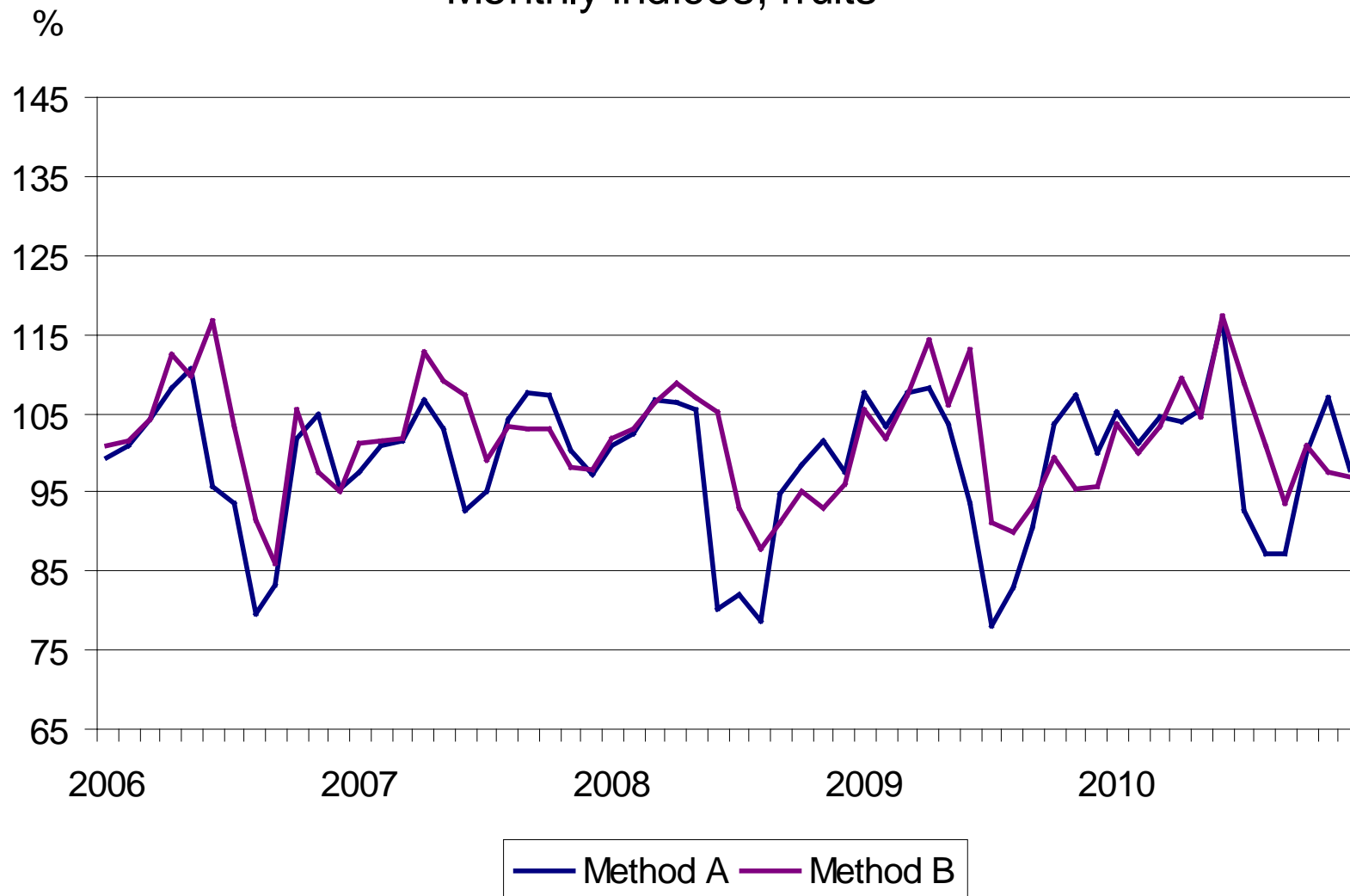
Variable weights, seasonal estimation (same from the first month of the out-of-season period)

Monthly indices, fruits

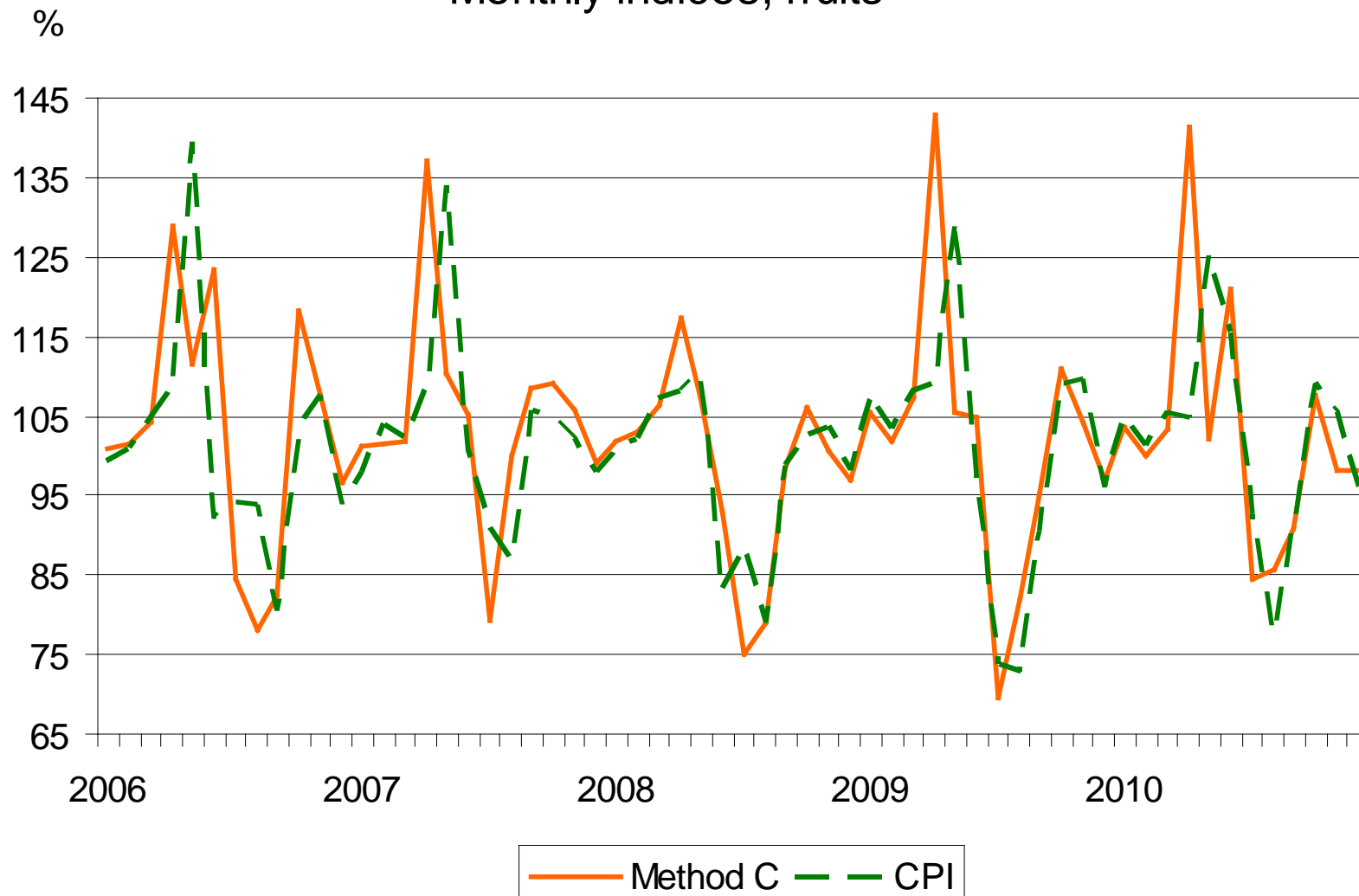




Monthly indices, fruits

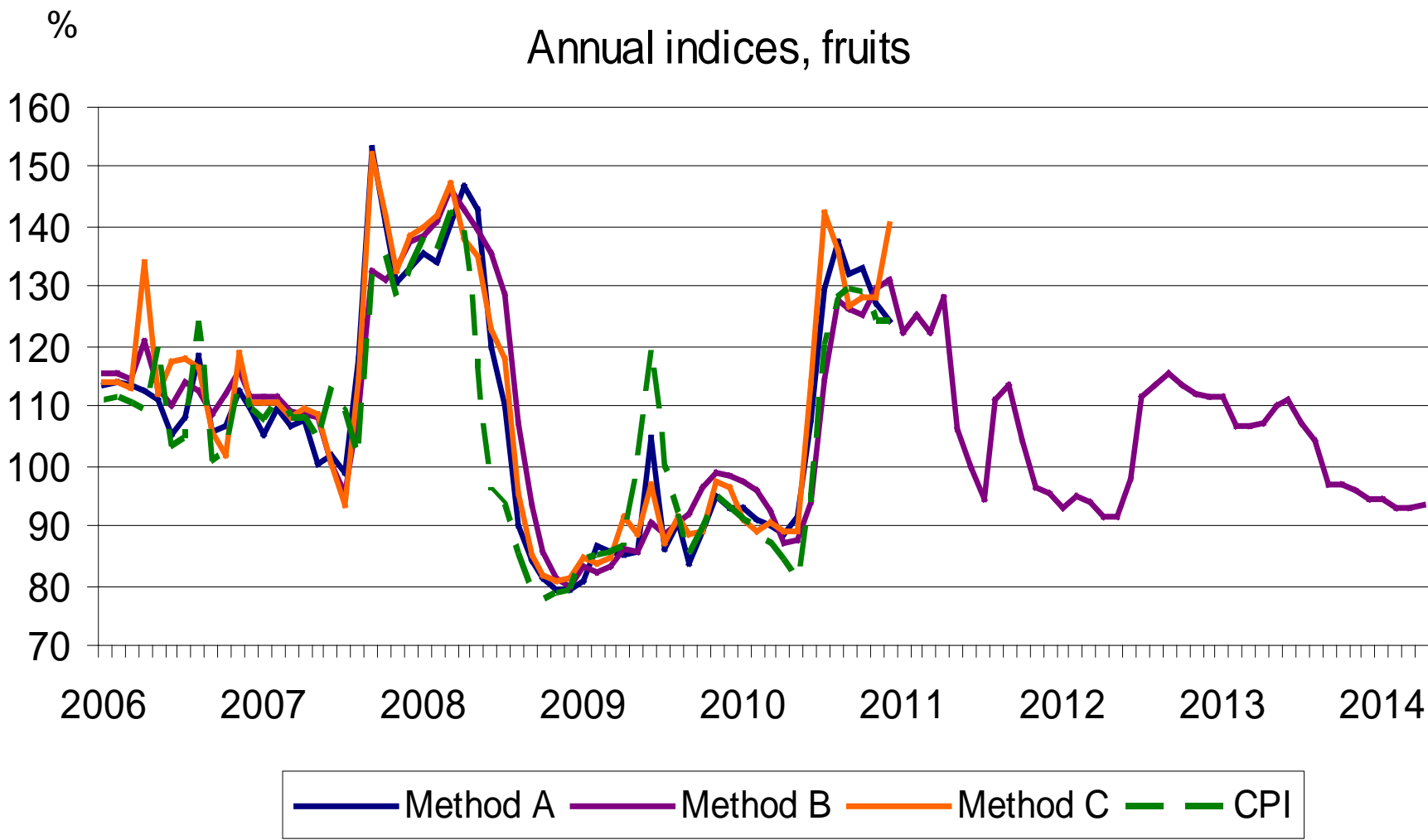


Monthly indices, fruits





Annual indices, fruits



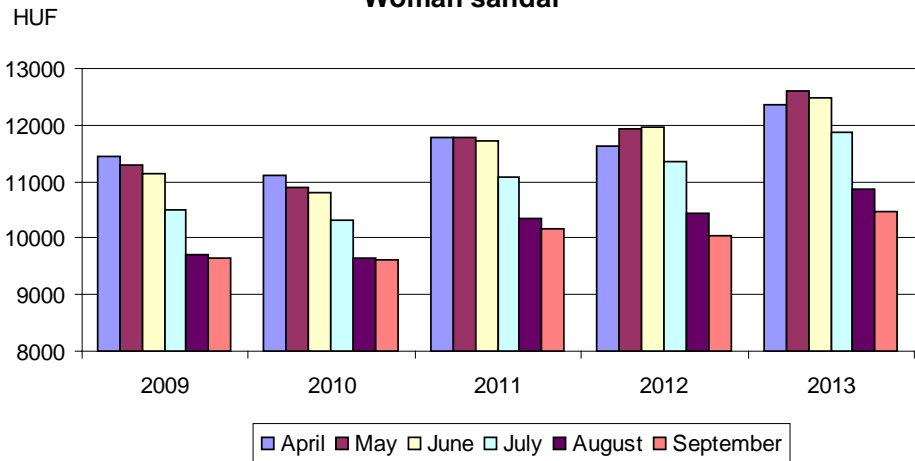
Typical (normal) price – typical month(s)

Largest volume of sale

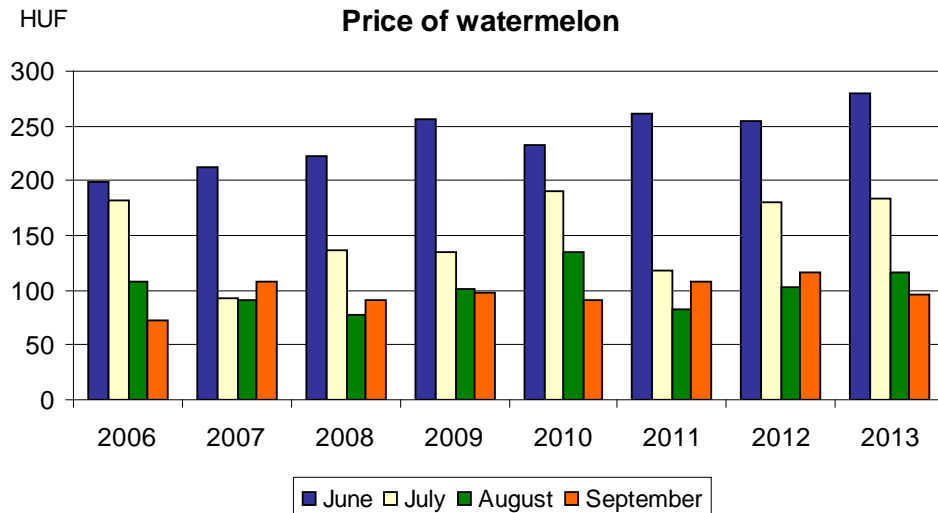
- Clothing – no information about monthly sale at all

- Fruits and vegetables – sales data only for domestic products from the agricultural statistics, markets

Woman sandal



Price of watermelon





Possible way forward

Annual update regarding to typical price and month(s)
(it is affected significantly by the weather for example)

Different seasonal pattern for domestic and imported
products (more data collection – costly)