

Declining labor force participation rates in the U.S.

Michael W. Horrigan, Ph.D.

Associate Commissioner

Office of Employment and Unemployment Statistics

October 5, 2017

Session 6: Experiences from Countries

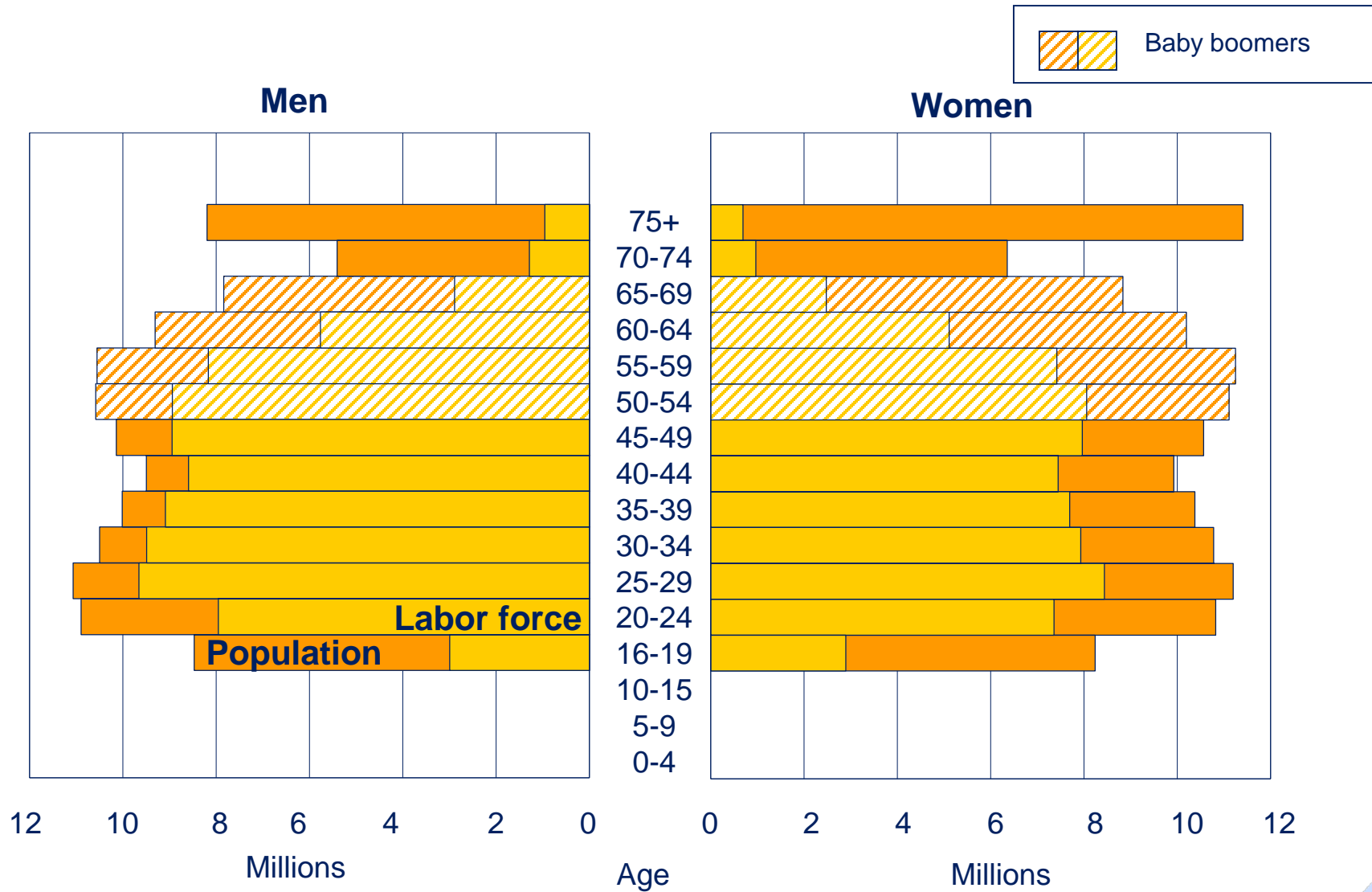
14:00 – 15:00 CET

Expert Group Meeting

Measuring the Quality of Employment

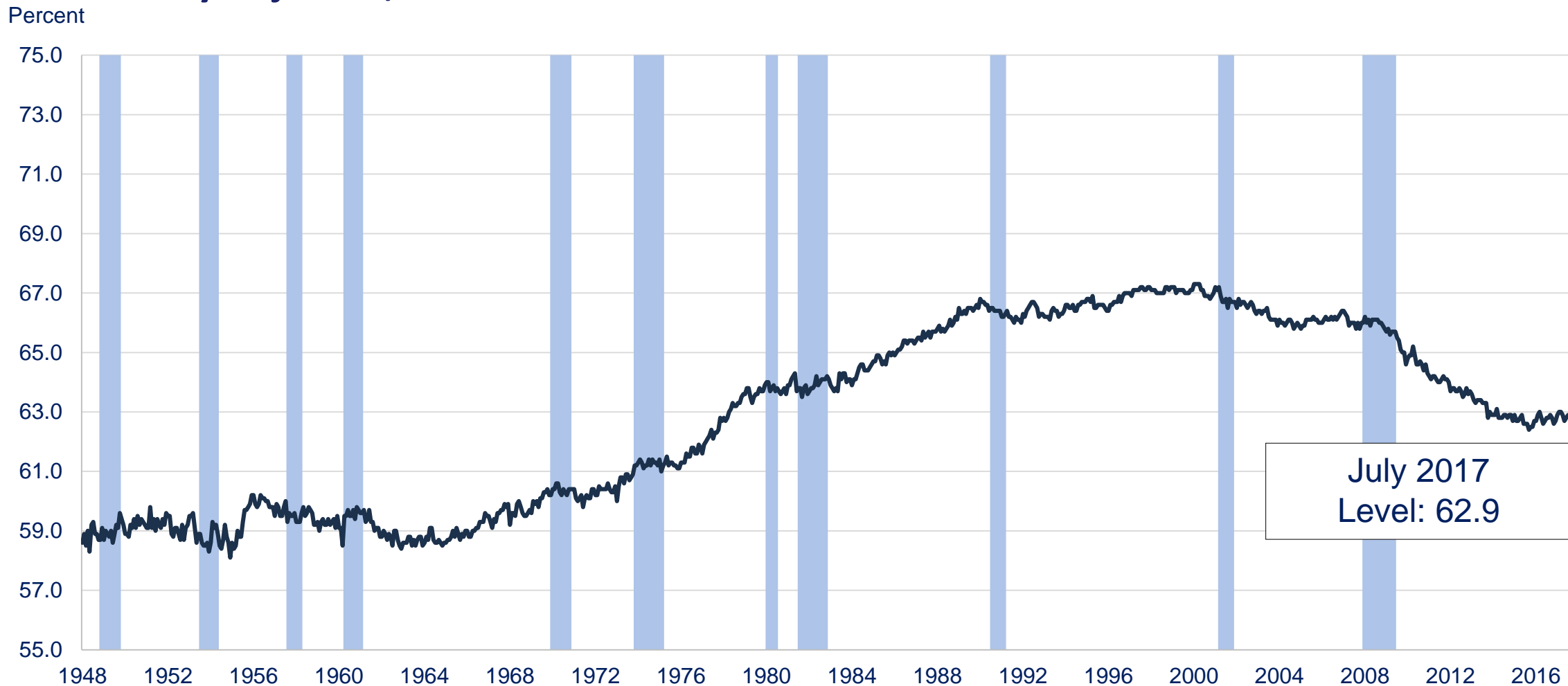


Population and Labor force, 2016



Labor force participation rate

Seasonally adjusted, 1948-2017



Note: Shaded area represents recession as determined by the National Bureau of Economic Research (NBER).

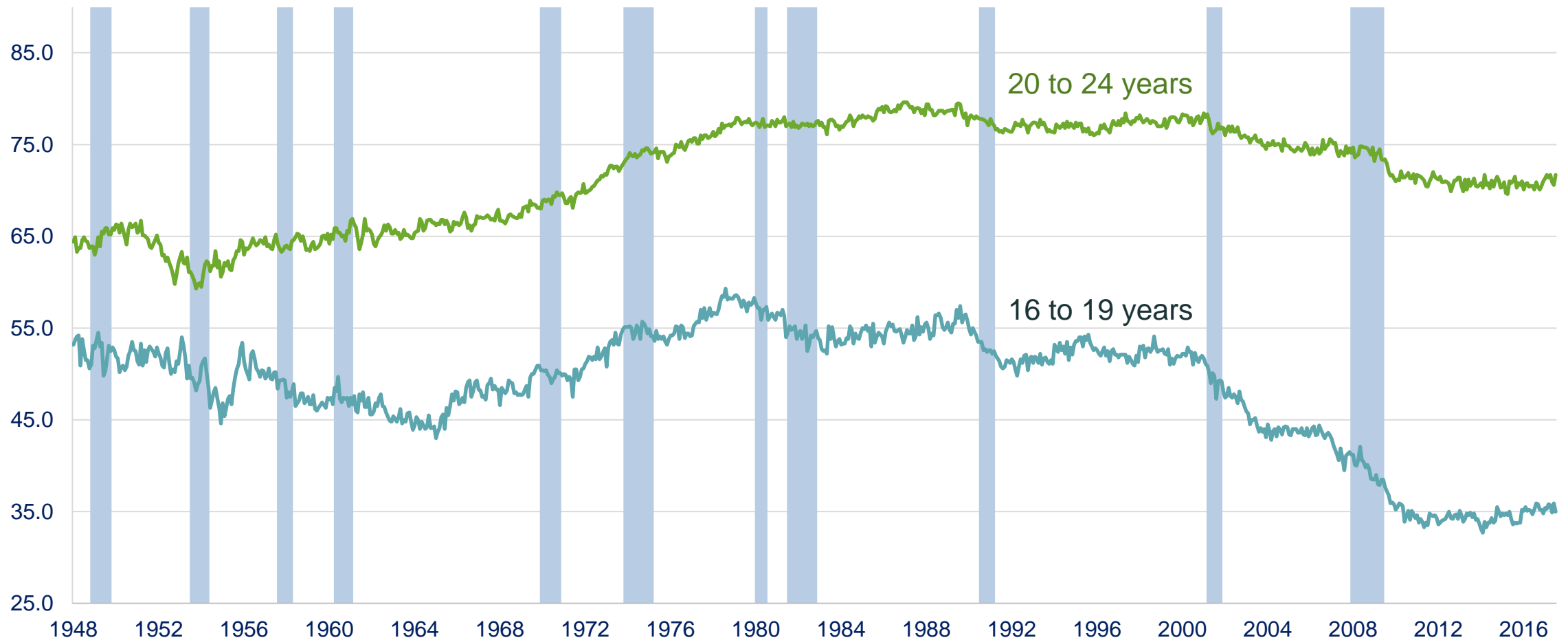
Source: Bureau of Labor Statistics, Current Population Survey.



Labor force participation rate of youth

Seasonally adjusted, 1999-2017

Percent



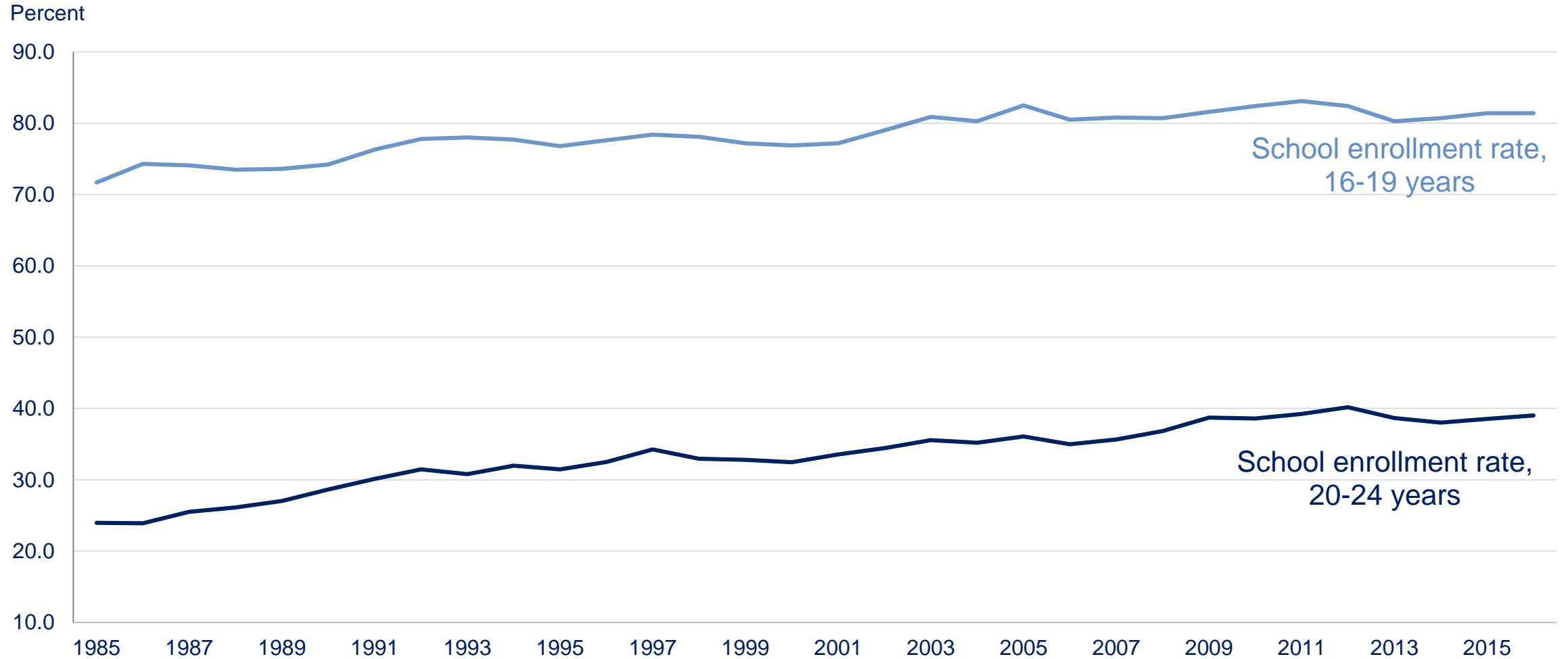
Note: Shaded area represents recession as determined by the National Bureau of Economic Research (NBER).

Source: Bureau of Labor Statistics, Current Population Survey.



School enrollment of youth

October 1985-2016

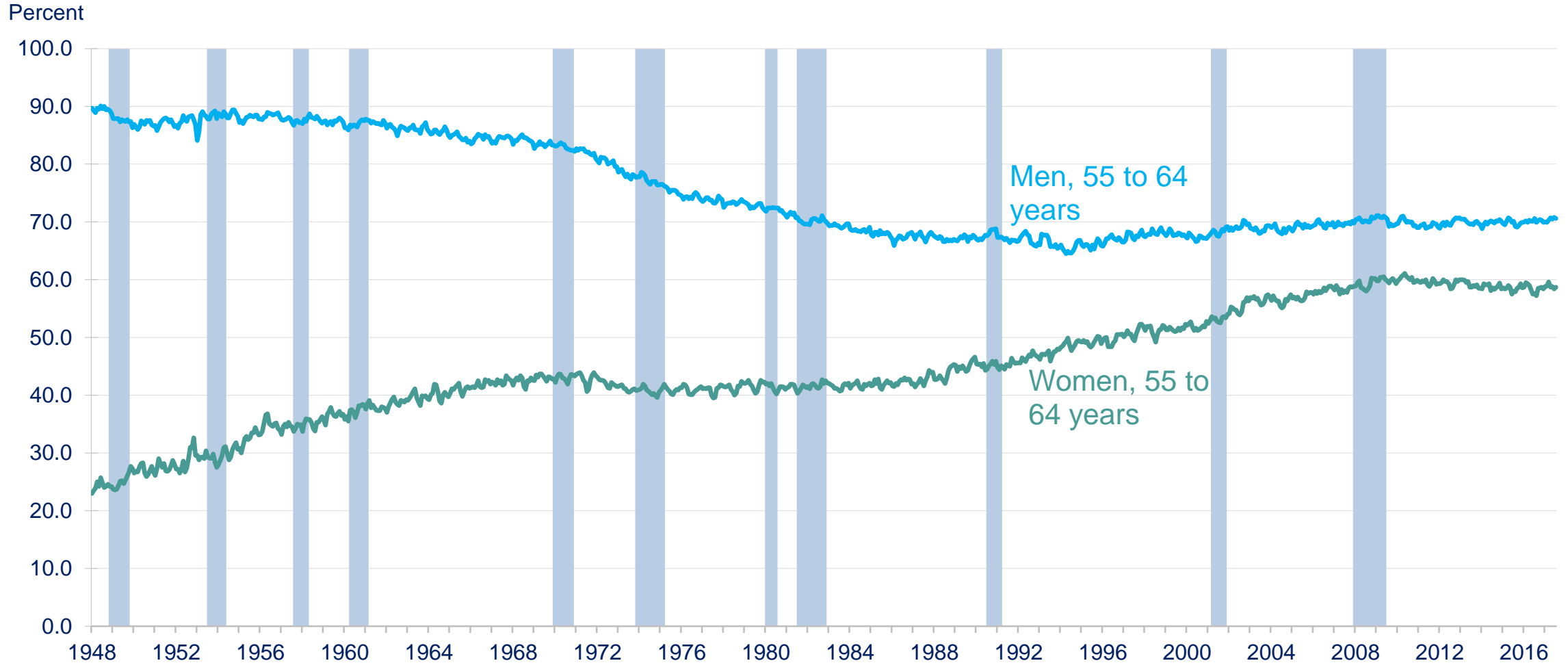


Note: October Supplement.
Source: Bureau of Labor Statistics, Current Population Survey.



Labor force participation rates by sex, 55 to 64 years old

Not seasonally adjusted, 1948-2017



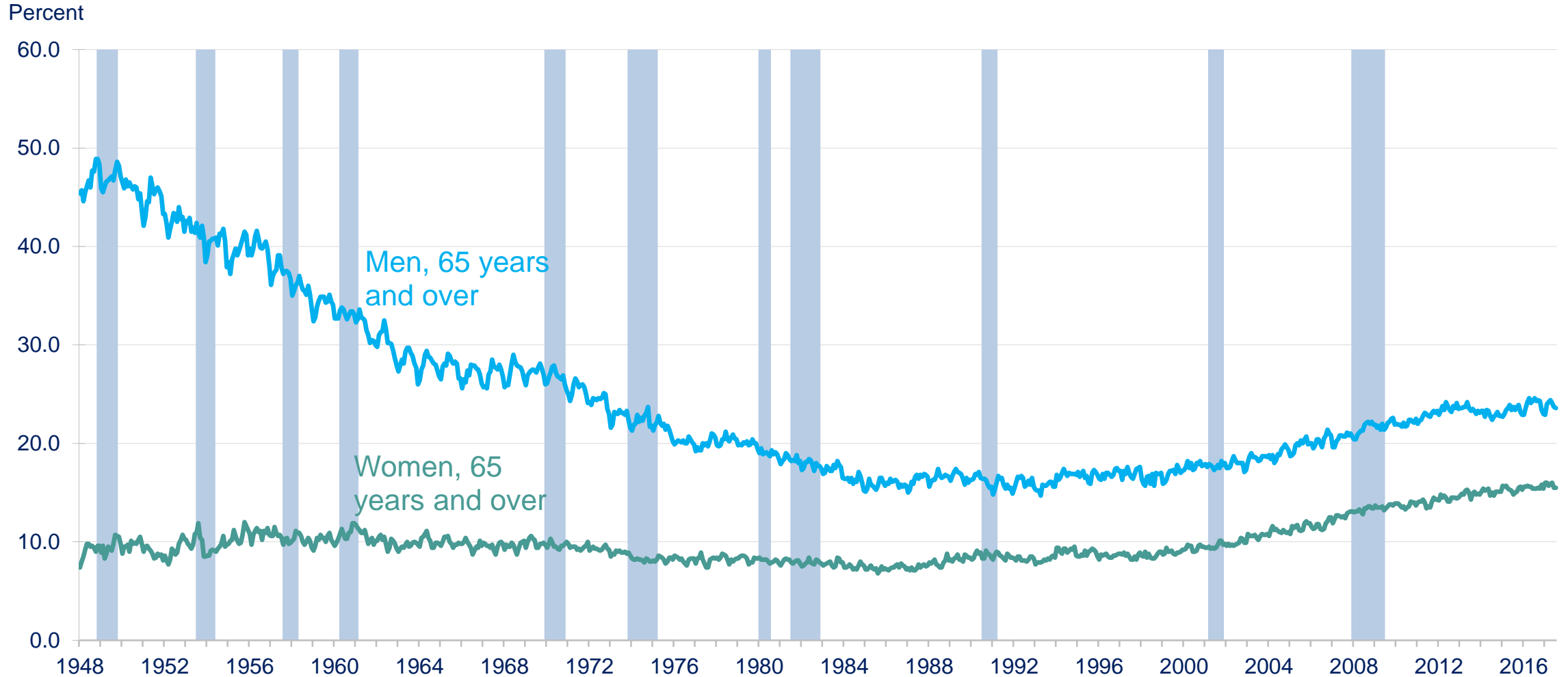
Note: Shaded area represents recession as determined by the National Bureau of Economic Research (NBER).

Source: Bureau of Labor Statistics, Current Population Survey.



Labor force participation rates by sex, 65 years and over

Not seasonally adjusted, 1948-2017



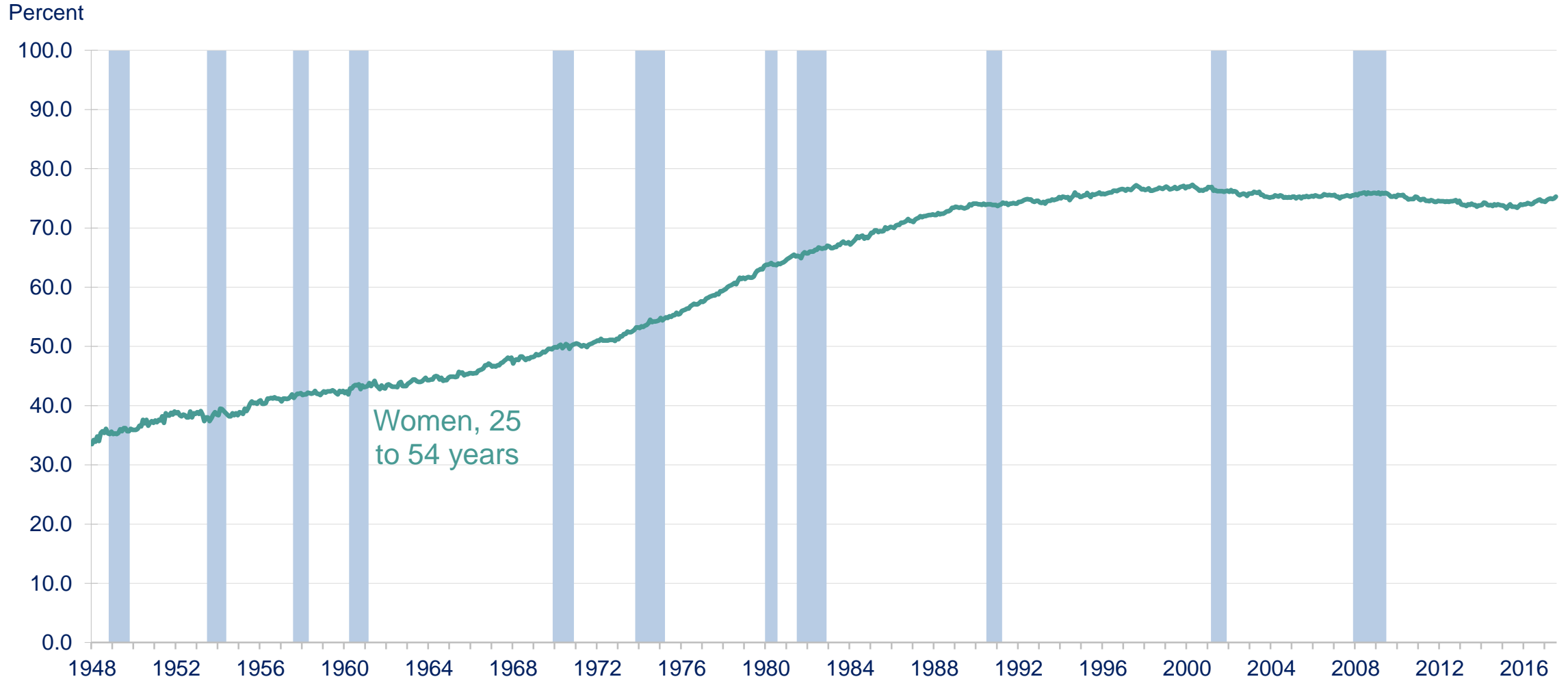
Note: Shaded area represents recession as determined by the National Bureau of Economic Research (NBER).

Source: Bureau of Labor Statistics, Current Population Survey.



Female labor force participation rates, 25 to 54 years old

Seasonally adjusted, 1948-2017



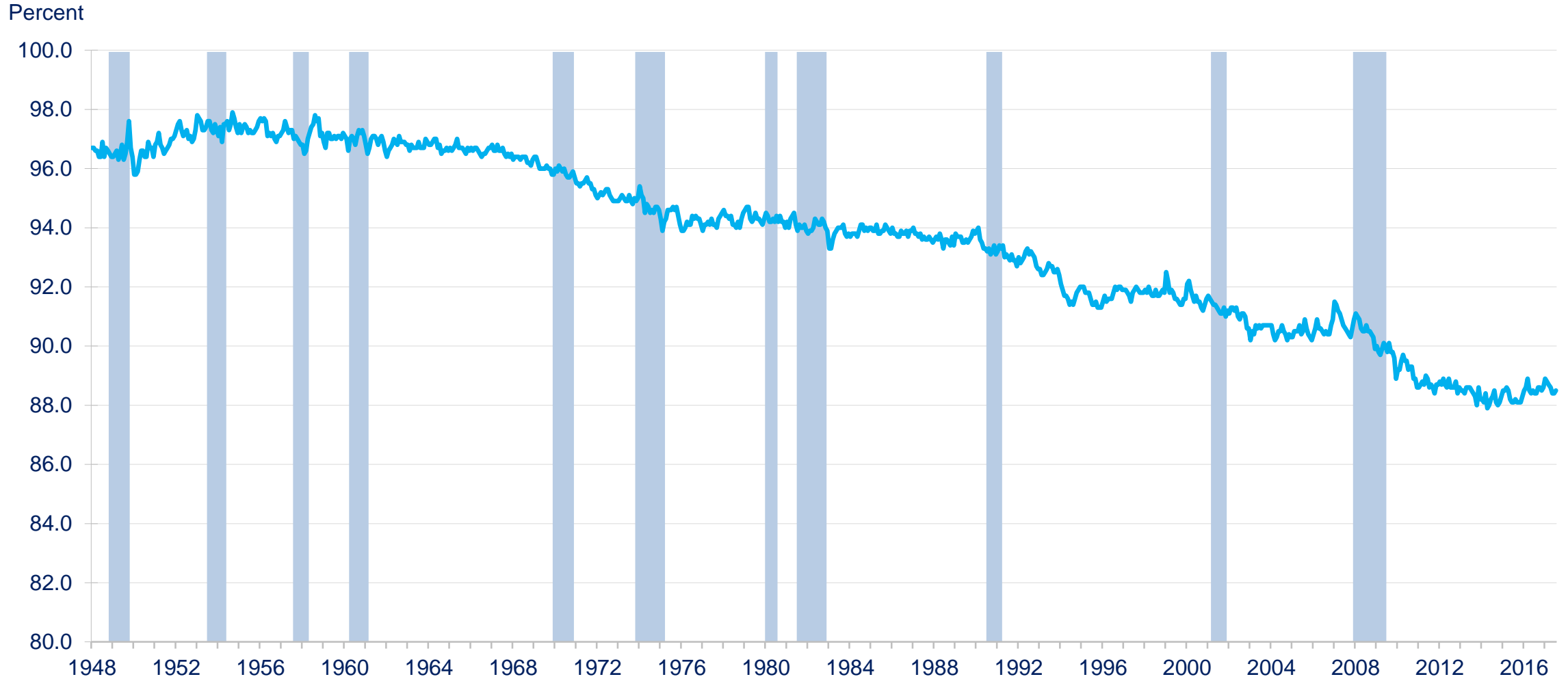
Note: Shaded area represents recession as determined by the National Bureau of Economic Research (NBER).

Source: Bureau of Labor Statistics, Current Population Survey.



Male labor force participation rates, 25 to 54 years old

Seasonally adjusted, 1948-2017



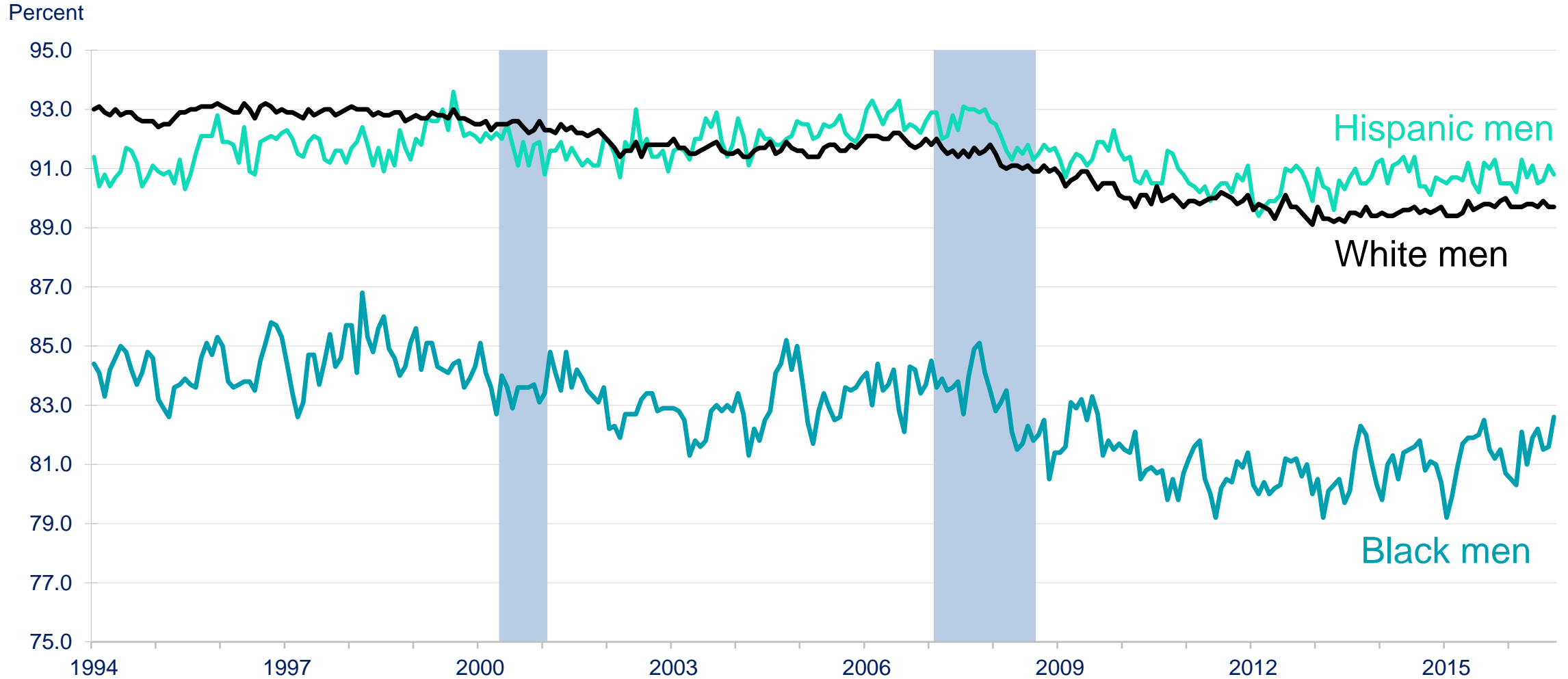
Note: Shaded area represents recession as determined by the National Bureau of Economic Research (NBER).

Source: Bureau of Labor Statistics, Current Population Survey.



Labor force participation rates of men 25 to 54 years old

Not seasonally adjusted, Nov 1994-2017



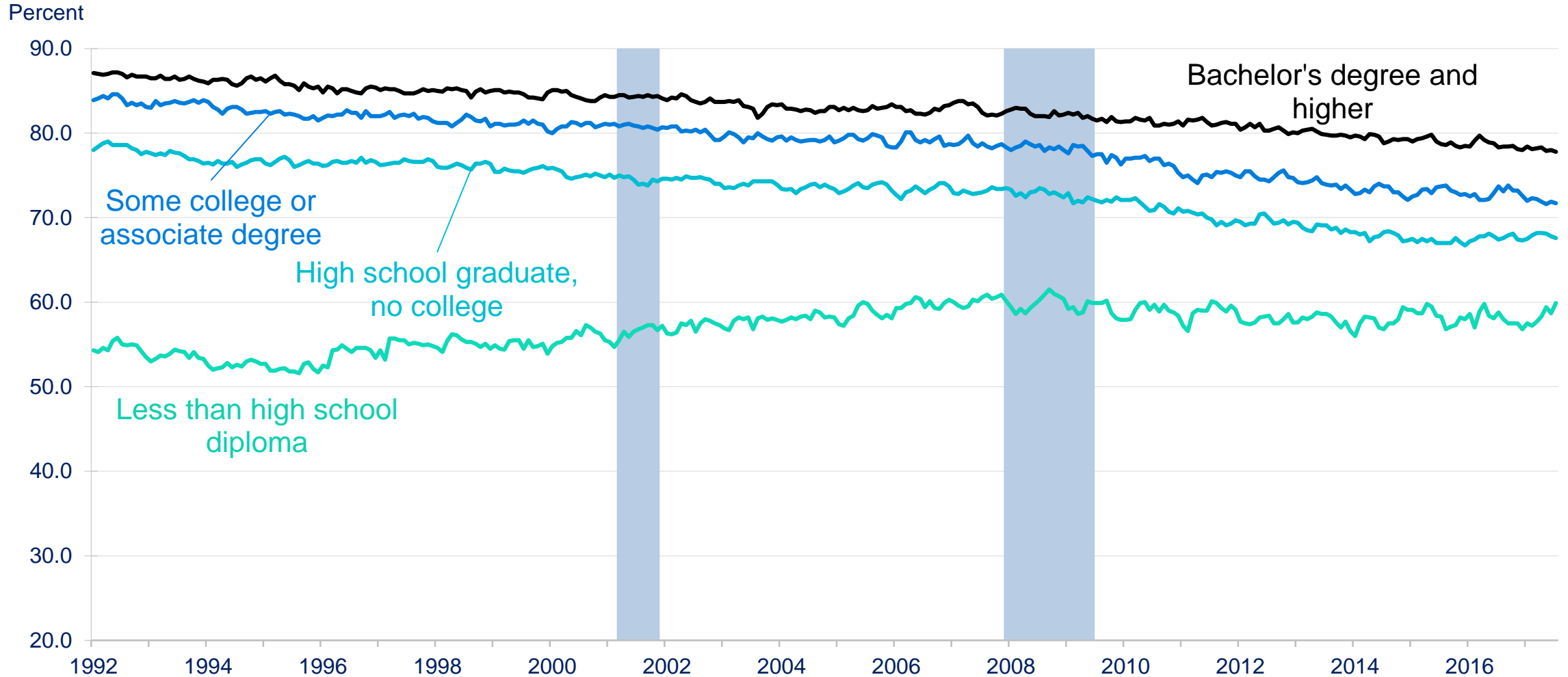
Note: Shaded area represents recession as determined by the National Bureau of Economic Research (NBER).

Source: Bureau of Labor Statistics, Current Population Survey.



Labor force participation rates for men 25 years and over

Not seasonally adjusted, 1992-2017

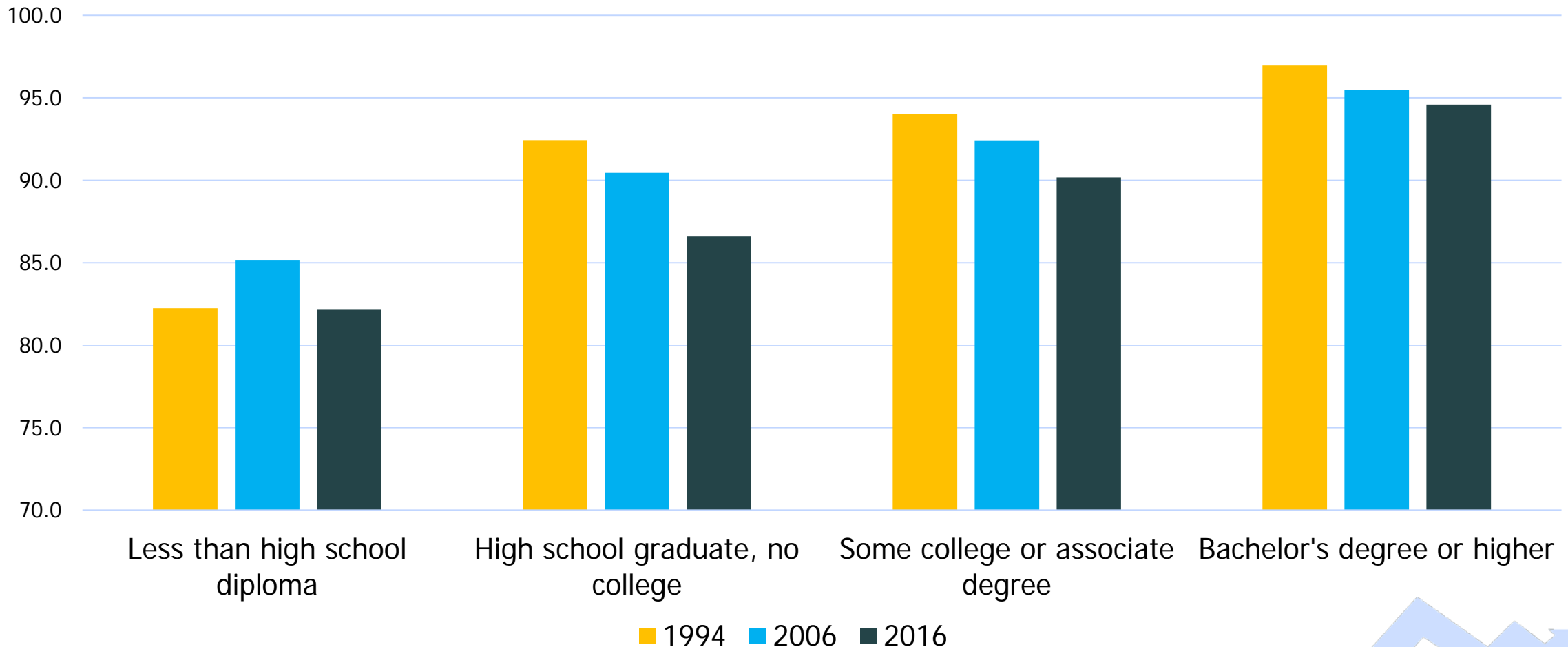


Note: Shaded area represents recession as determined by the National Bureau of Economic Research (NBER).

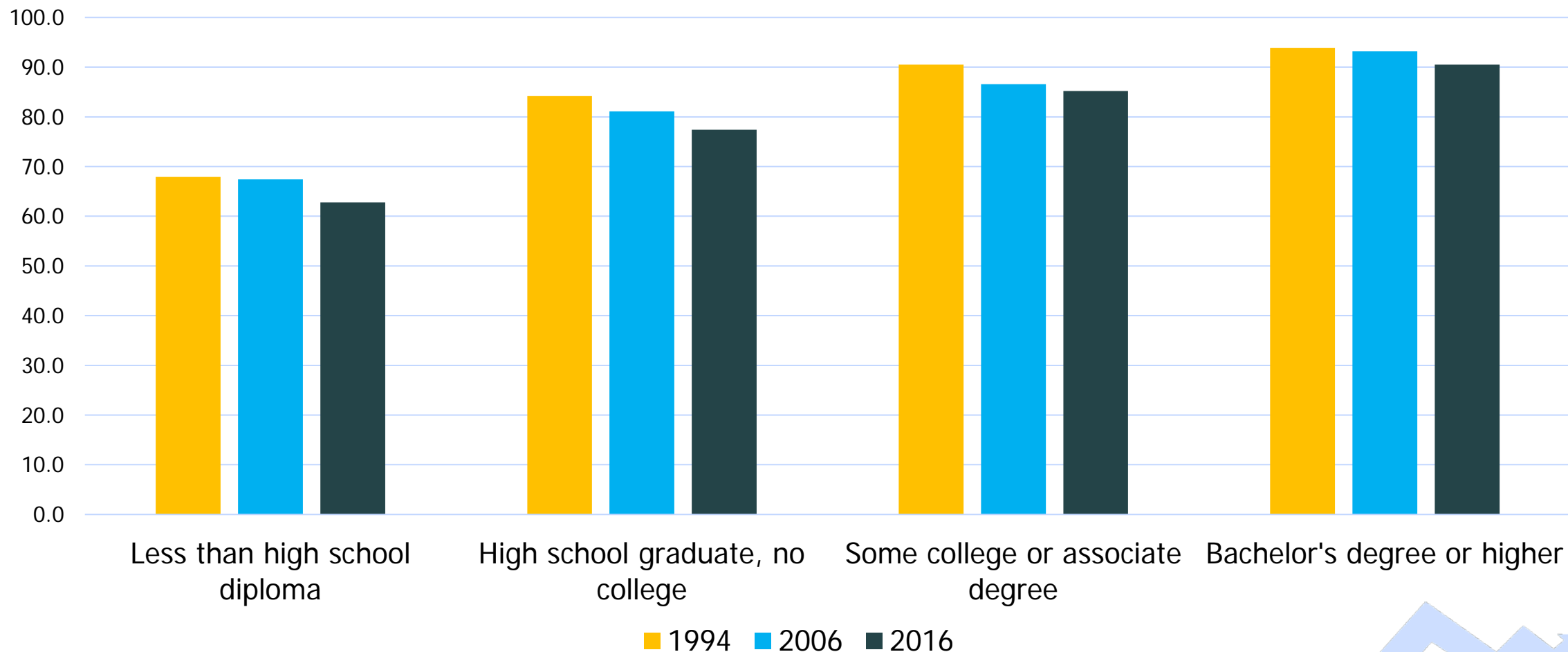
Source: Bureau of Labor Statistics, Current Population Survey.



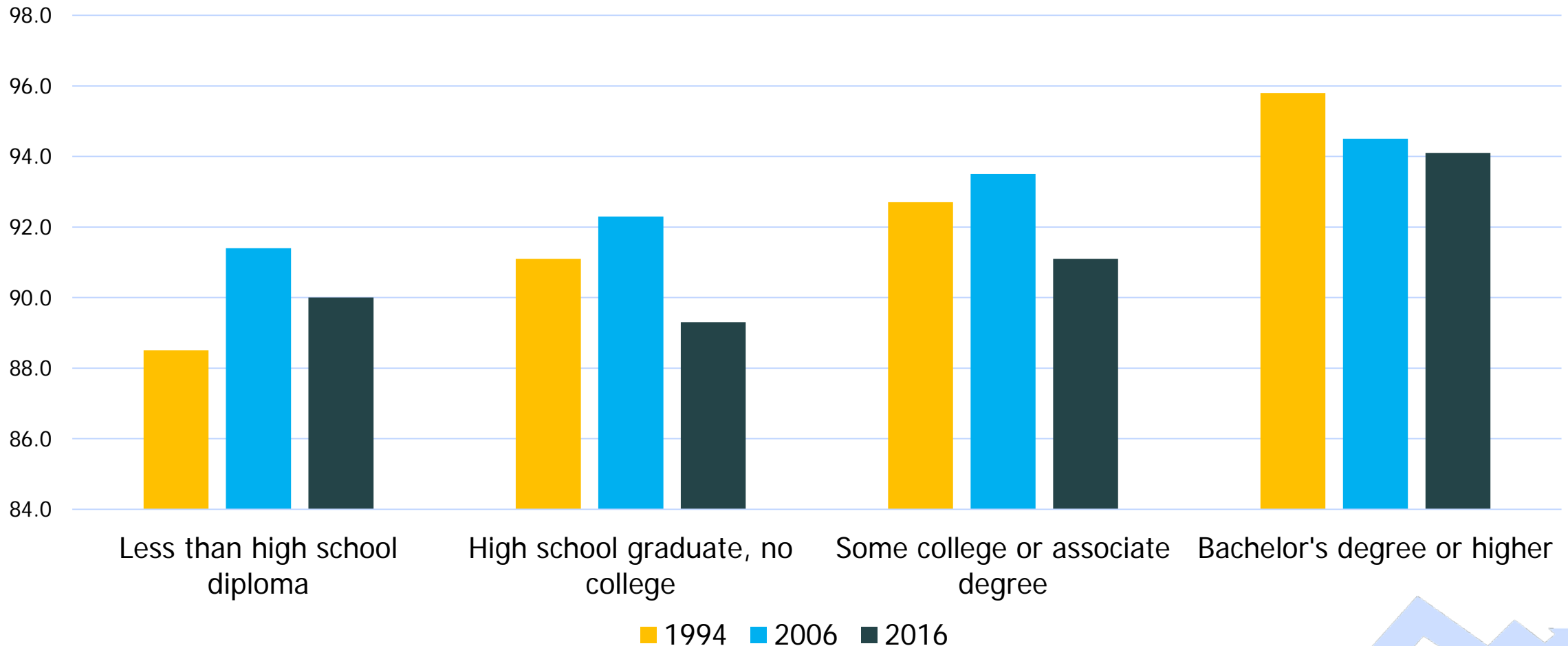
Labor force participation rates of White men 25 to 54 years old by education, annual averages



Labor force participation rates of Black men 25 to 54 years old by education, annual averages



Labor force participation rates of Hispanic men 25 to 54 years old by education, annual averages

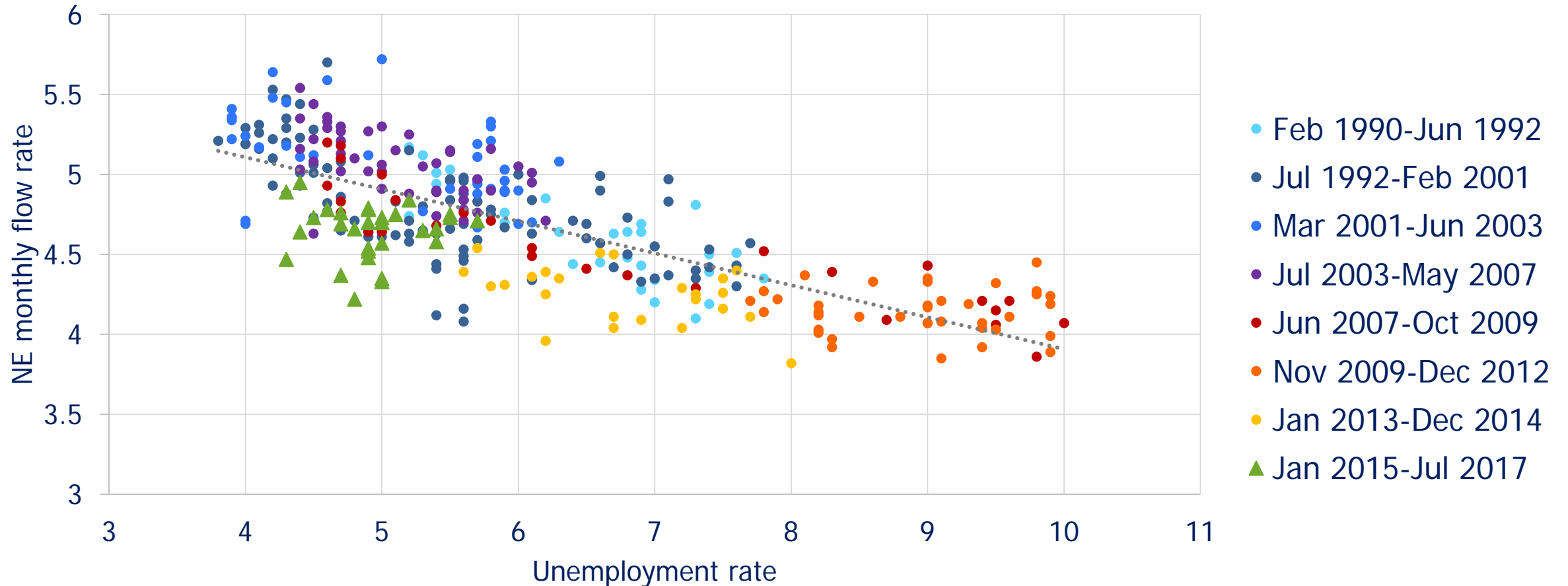


Labor force status flows perspective

- The Current Population Survey (CPS), which is used to determine monthly employment status of the population, has a 4-8-4 rotation group pattern
- That is, a household selected for the survey is in the survey for 4 consecutive months, out for 8, and back in for 4



Flows from not in the labor force to employment by unemployment rate



Note: Data are seasonally adjusted.
Source: Bureau of Labor Statistics, Current Population Survey.



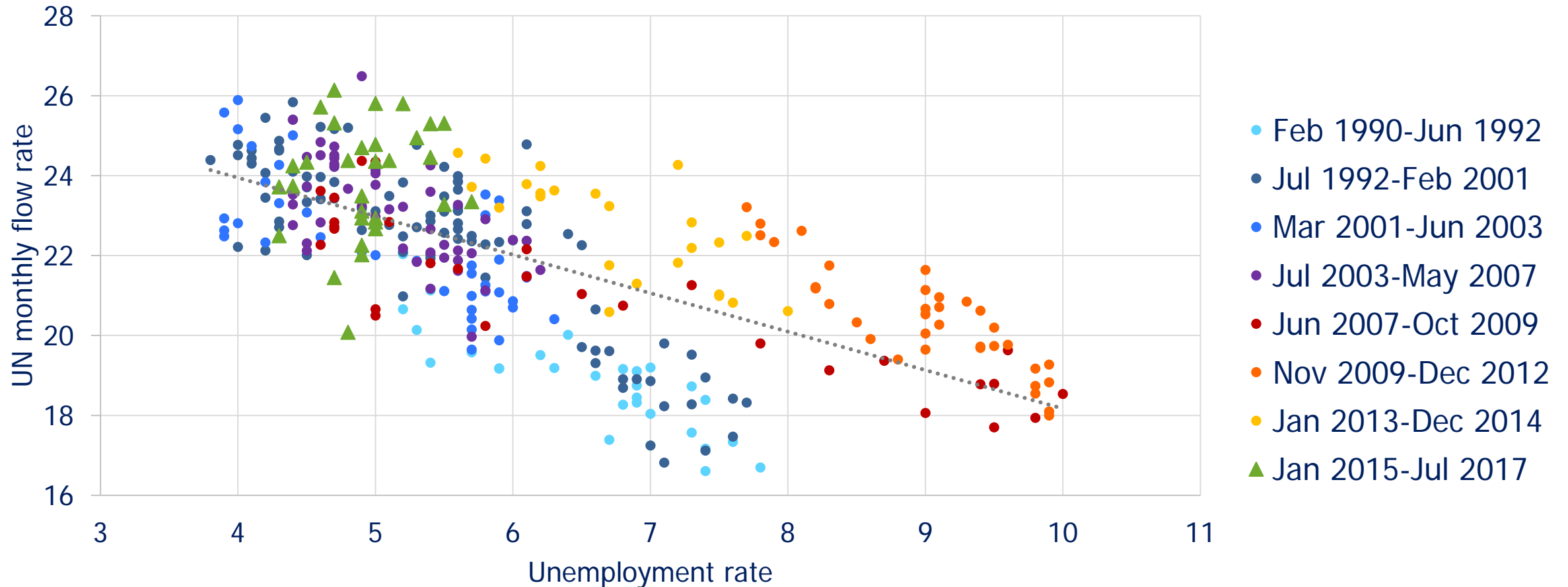
Flows from not in the labor force to unemployment by unemployment rate



Note: Data are seasonally adjusted.
Source: Bureau of Labor Statistics, Current Population Survey.



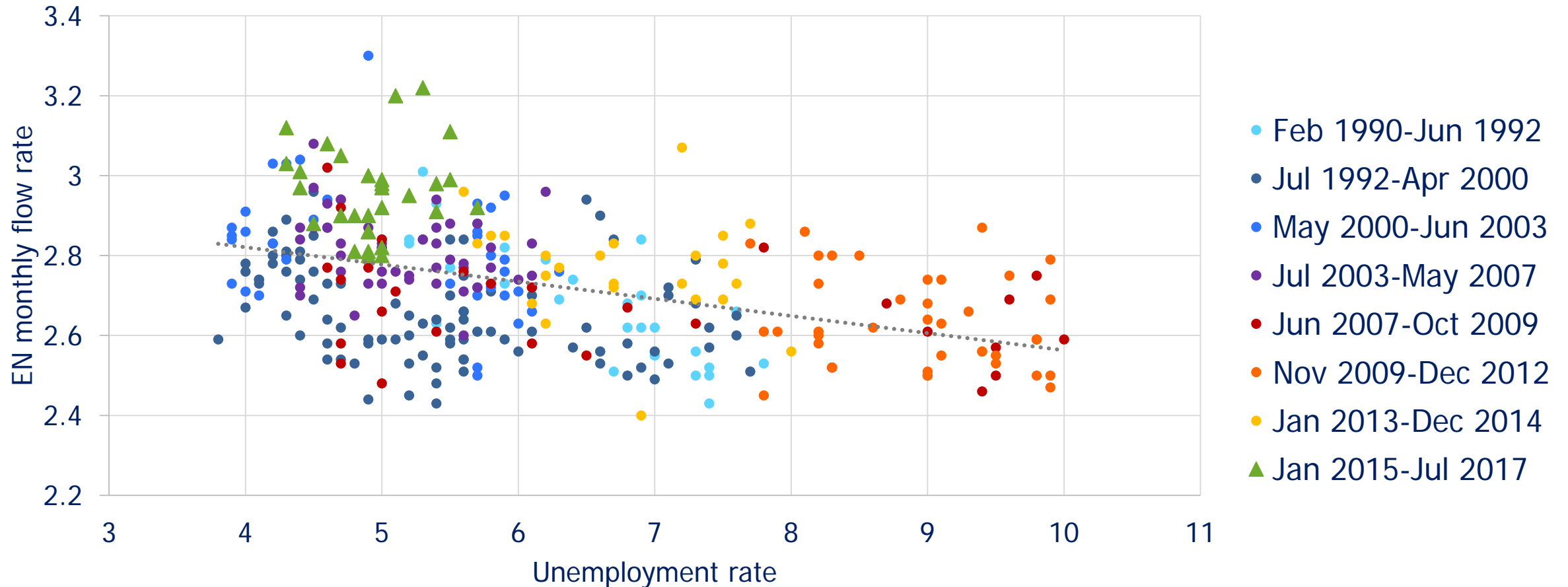
Flows from unemployment to not in the labor force by unemployment rate



Note: Data are seasonally adjusted.
Source: Bureau of Labor Statistics, Current Population Survey.



Flows from employment to not in the labor force by unemployment rate



Note: Data are seasonally adjusted.
Source: Bureau of Labor Statistics, Current Population Survey.



Longitudinal data perspective

- The NLS program has been following two cohorts of youth since early ages – one starting in 1979 and the other in 1997.
- The cohort that began in 1979 (NLSY79) was ages 14-21 on December 31, 1978 and the cohort that began in 1997 (NLSY97) was ages 12-16 on December 31, 1996.
- These cohorts are interviewed every year or every two years and a complete event history of their labor force participation (employed, unemployed, out of the labor force) is recorded for every week of their lives.

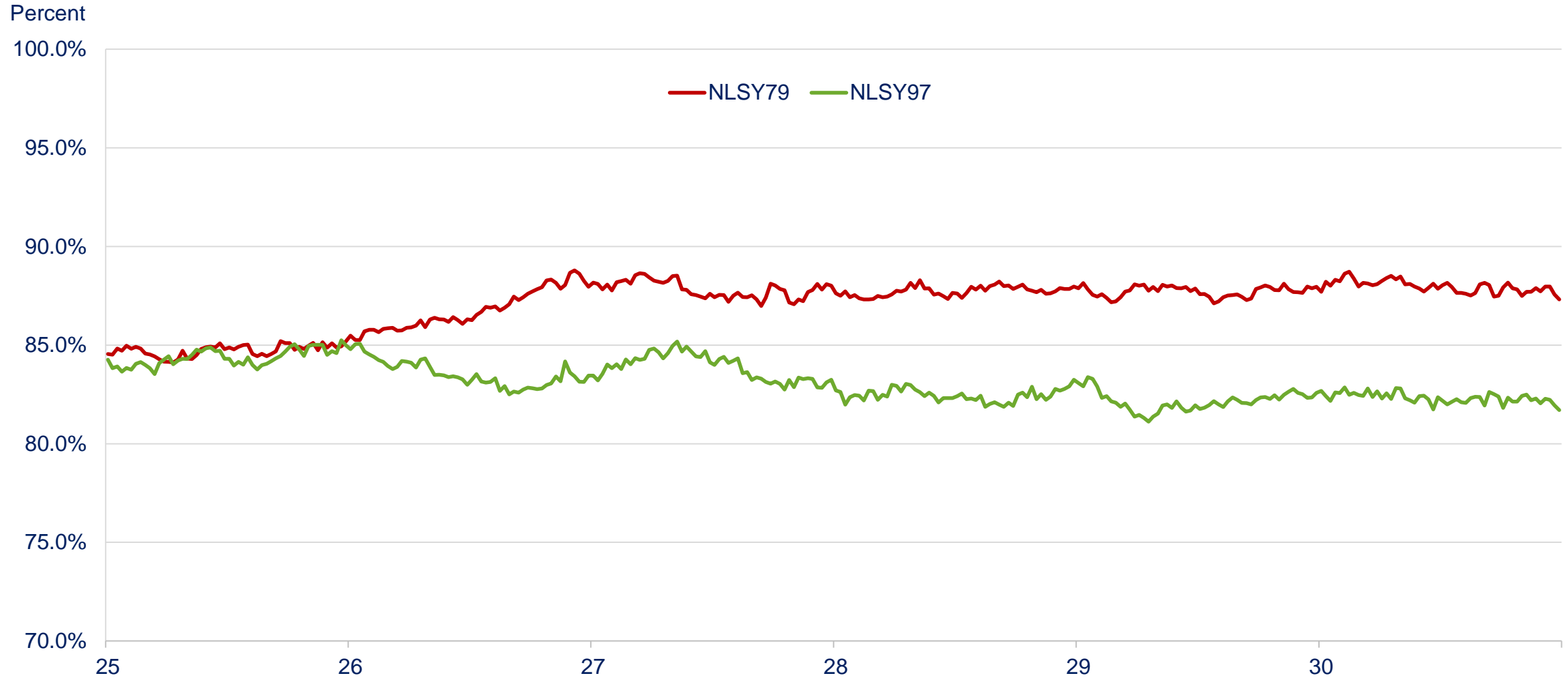


Longitudinal data perspective

- These very unique data sets allow us to examine the labor force participation of these two cohorts at the same exact ages – in this case, the maximum sample overlap is for ages 25-30
- The following slides will examine the proportion of each cohort that is employed, unemployed and out of the labor force for each single week between and including the ages 25-30
- The NLSY79 cohort were ages 25-30 between 1983 and 1996
- The NLSY97 cohort were ages 25-30 between 2006 and 2016



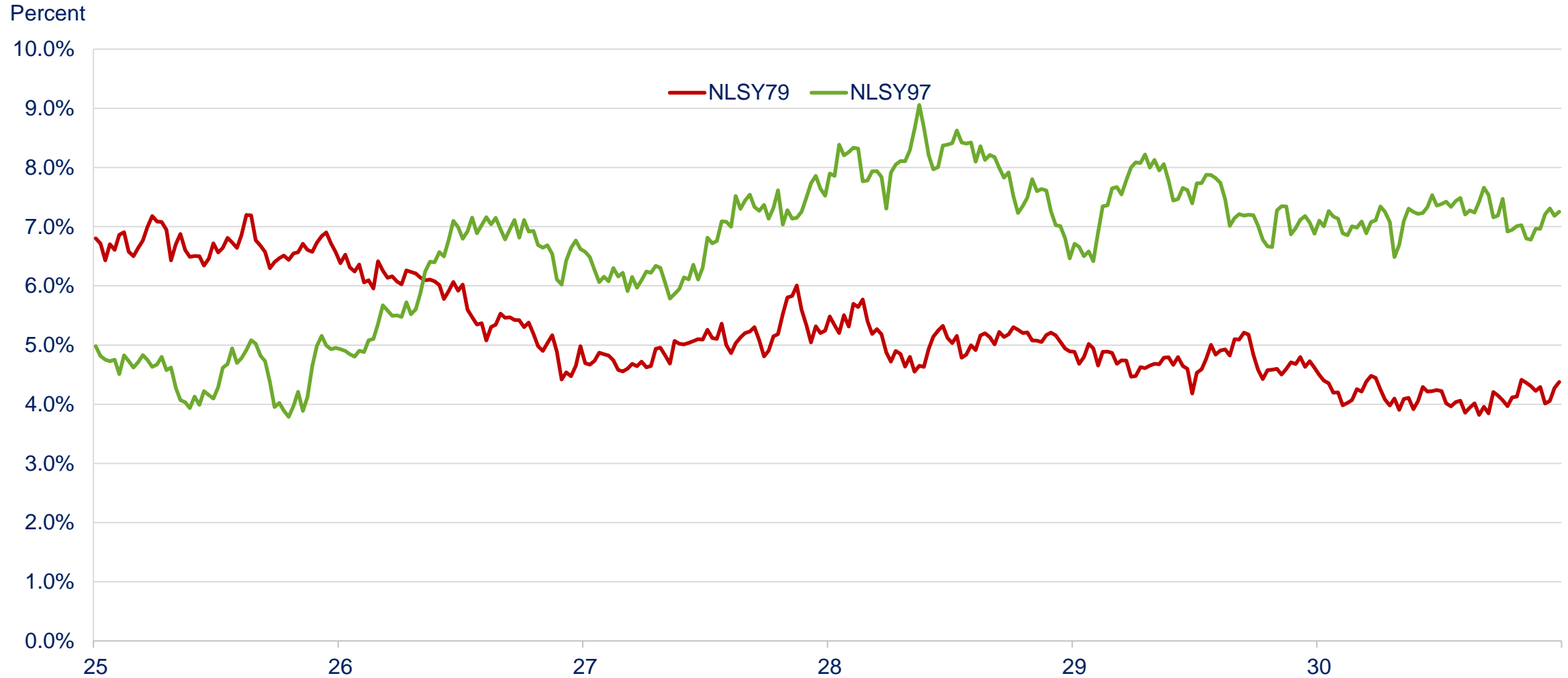
Proportion of the men employed each week, ages 25-30, for the NLSY79 and the NLSY97 cohorts



Note: NLSY79 cohort were ages 25-30 in 1983-1996
NLSY97 cohort were ages 25-30 in 2006-2016



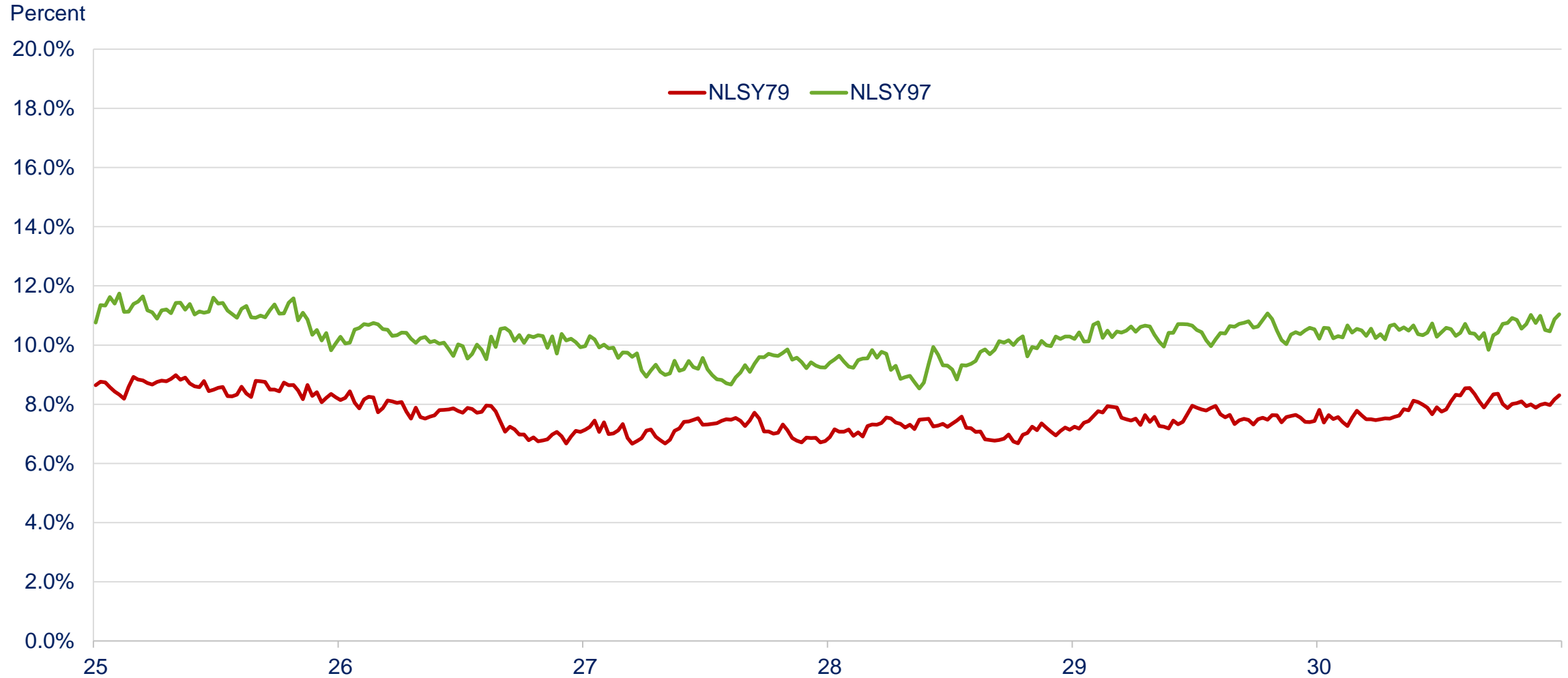
Proportion of the men unemployed each week, ages 25-30, for the NLSY79 and the NLSY97 cohorts



Note: NLSY79 cohort were ages 25-30 in 1983-1996
NLSY97 cohort were ages 25-30 in 2006-2016



Proportion of the men out of the labor force each week, ages 25-30, for the NLSY79 and the NLSY97 cohorts



Note: NLSY79 cohort were ages 25-30 in 1983-1996
NLSY97 cohort were ages 25-30 in 2006-2016

