



UNITED NATIONS
ECONOMIC COMMISSION
FOR EUROPE

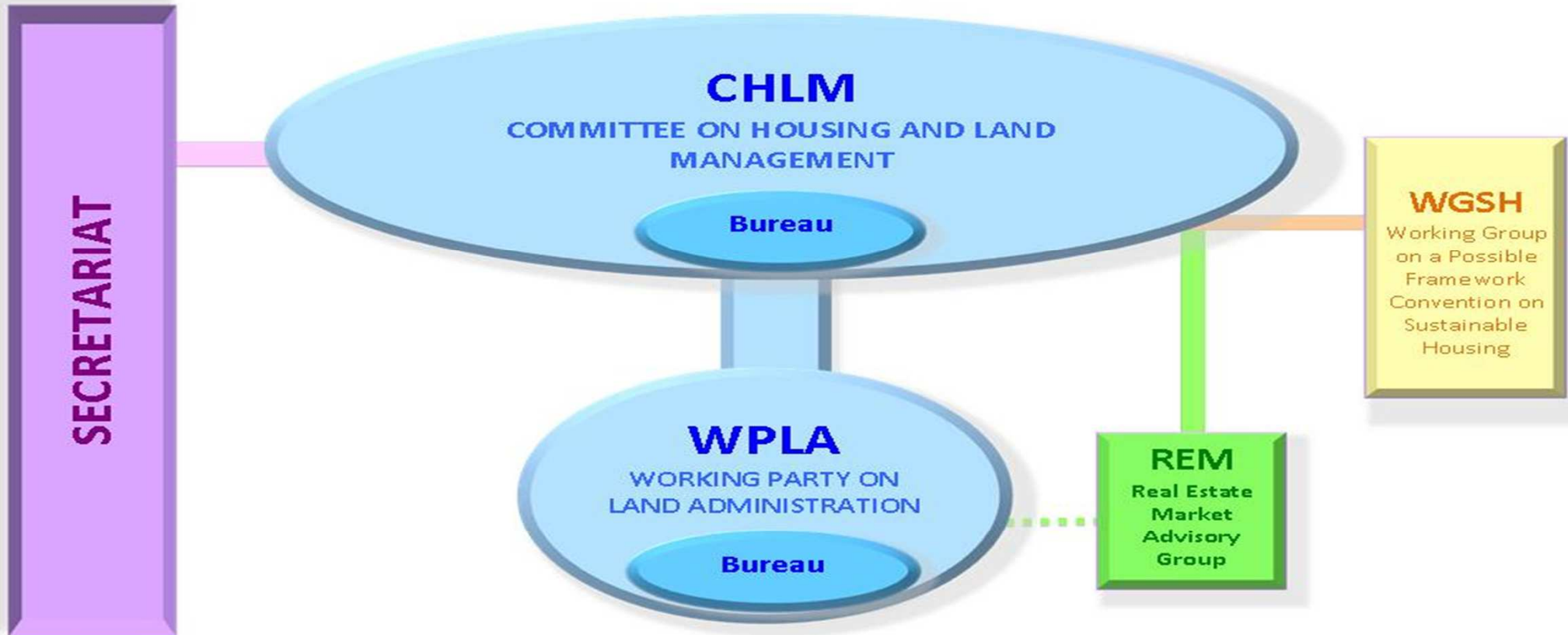


Item 7. Review of Programme of Work





Structure of UNECE Committee on Housing and Land Management



Intergovernmental Body



Advisory Body : reports to CHLM, advises both CHLM and WPLA



Working Group (ad hoc)



CHLM Secretariat



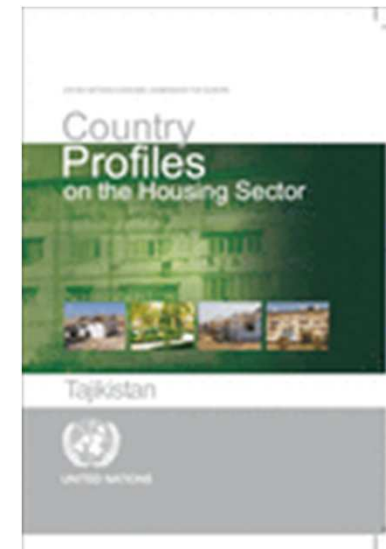
Country Profiles



Objective:

To improve housing and land management systems of the countries under review

- **Kyrgyzstan – launch event organized, possible follow-up in discussion: a training, establishment of a High-Level Steering Committee to coordinate implementation, model projects**
- **Tajikistan – published, a launch event 26.10.12., discuss preparation of implementation**
- **Ukraine – in work, launch in summer 2013**
- **Moldova – a pre-mission December 2012**
- **Russia – a pre-mission November 2012**



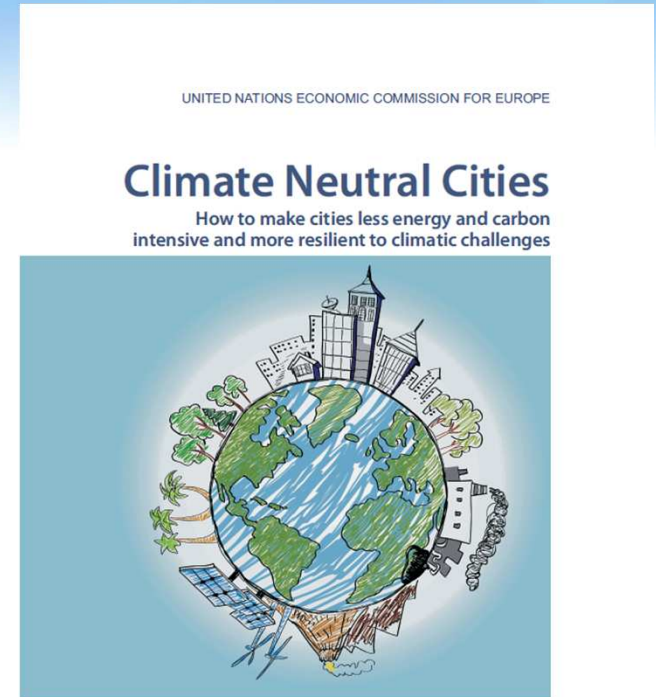


Urban Environmental Performance - Climate neutral urban development



Objective:
to improve urban development policies as a key tool in tackling climate change and realization of green economy

Study on Climate Neutral Cities





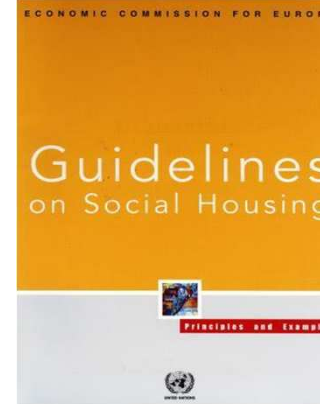
Urban Environmental Performance



Following Rio+20, interdivisional activities planned

Organization of:

- **Workshop on sustainable urban development, 27 November 2012**
- **Eastern Europe and Central Asia Housing Forum, 22 – 24 April**





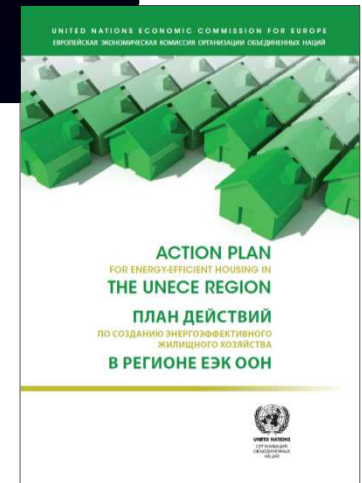
Housing modernization and management

Green Homes

- Presents key benefits, challenges and prospects
- Outlines necessary institutional changes
- Provides set of recommendations for governments

Action Plan for Energy Efficiency

- 12 Policy goals to accelerate transition
- Broad application of existing technical solutions
- Remove barriers of implementation
- Policy reforms in the areas of governance, financial infrastructure and technological upgrades





Land administration and registration – WPLA

ACTIVITIES of WPLA

- Seminars and workshops organized in member States
- Participation in the development of country profiles on the housing sector
- Benchmarking and preparation of inventories of land administration systems in the UNECE region



WPLA session, April 2013





Land administration and registration - REM

REM is advisory body to the Committee on Housing and Land Management and the Working Party on Land Administration: round tables, guidelines, advice to the Committee





Communication and outreach

- **Updated website:**
<http://www.unece.org/hlm/welcome.html>
- **Committee brochure and CD;**
- **Vital Spaces newsletter – send contributions by 10 October 2012!**
- **Green Economy seminars newsletters;**
- **Expert opinions' campaign;**
- **Events: organization of seminars with invitation of stakeholders and partners**

