

IUCN Centre Extension

Project Presentation

agps Zurich

architect

Amstein+Walthert Geneva

mechanical engineer

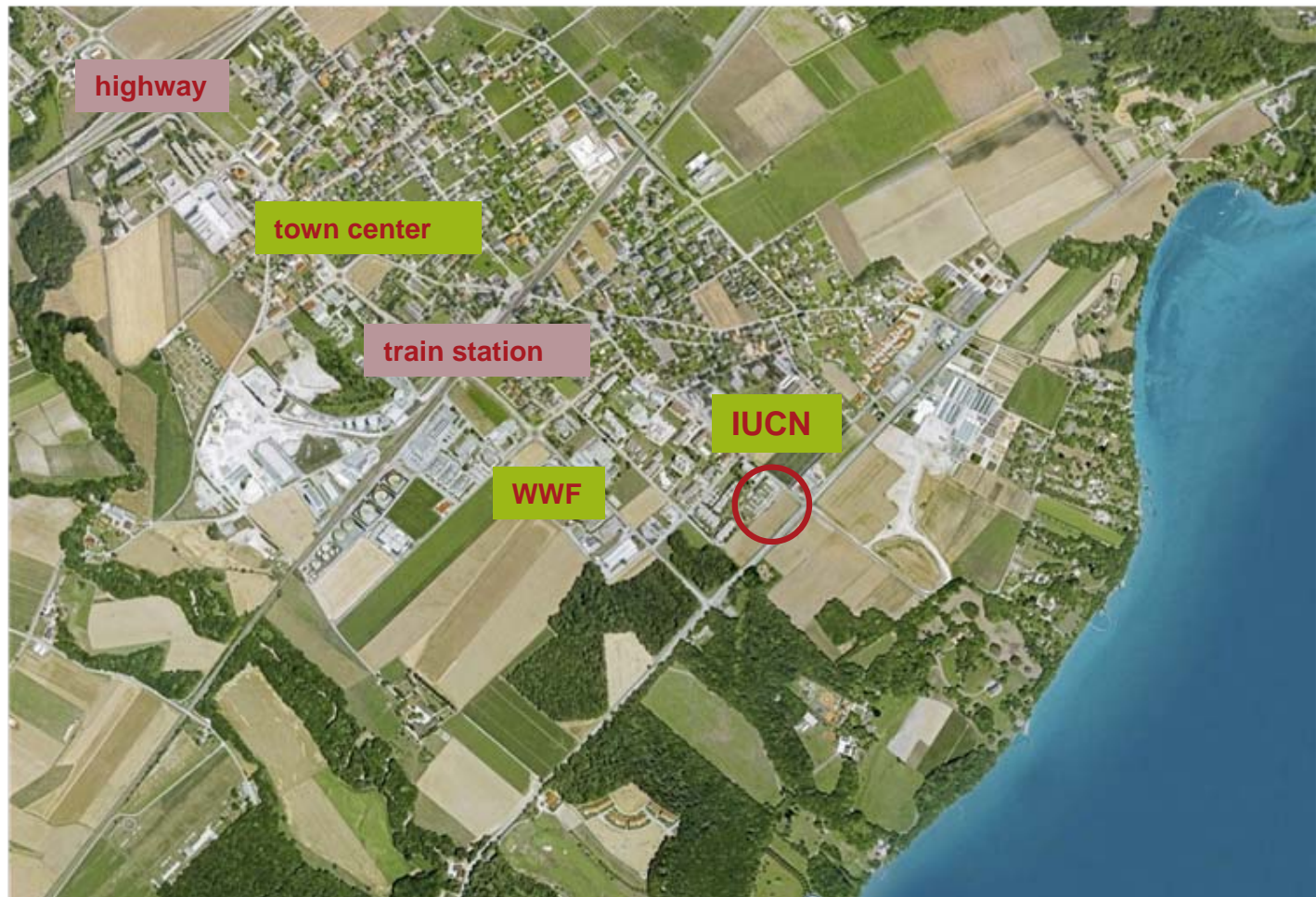
INGENI Carouge

structural engineer

Karl Steiner Geneva

total contractor

site



the big picture

IUCN
CENTRE EXTENSION

high profile

low budget

MINERGIE-P

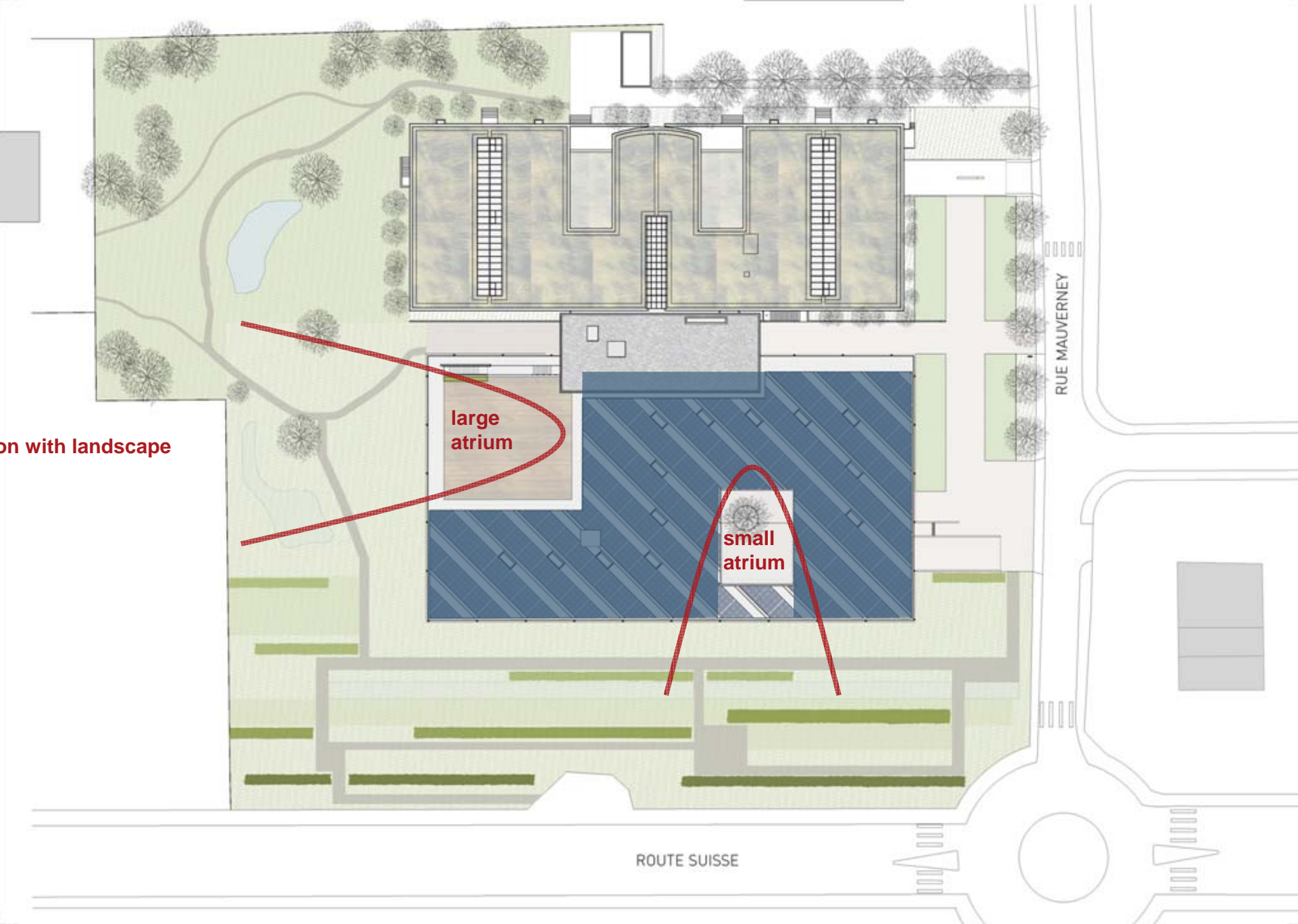
LEED® LEADERSHIP IN ENERGY



IE-ECO®

site integration

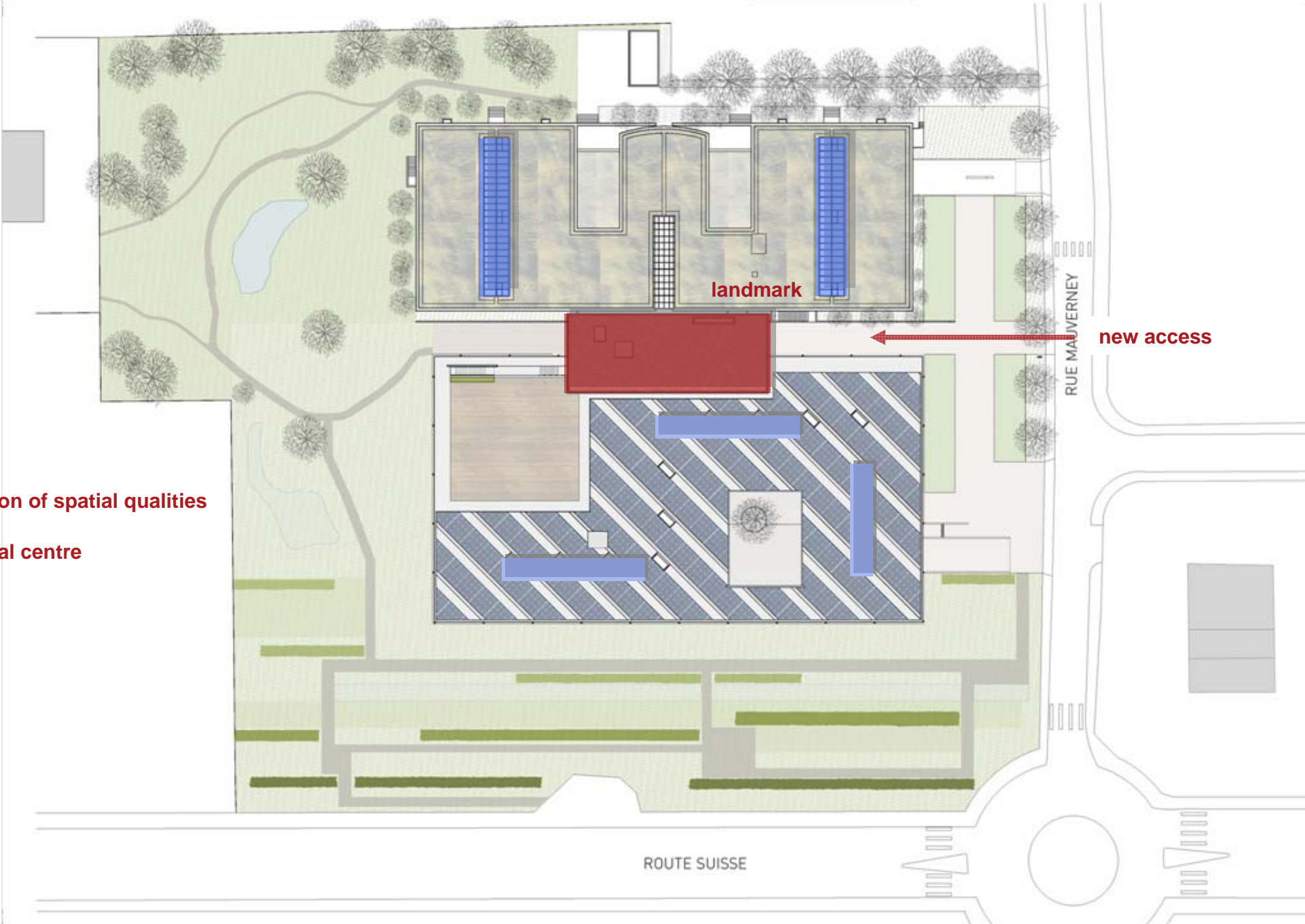
interaction with landscape







site integration



adaptation of spatial qualities

ideational centre

landmark

new access

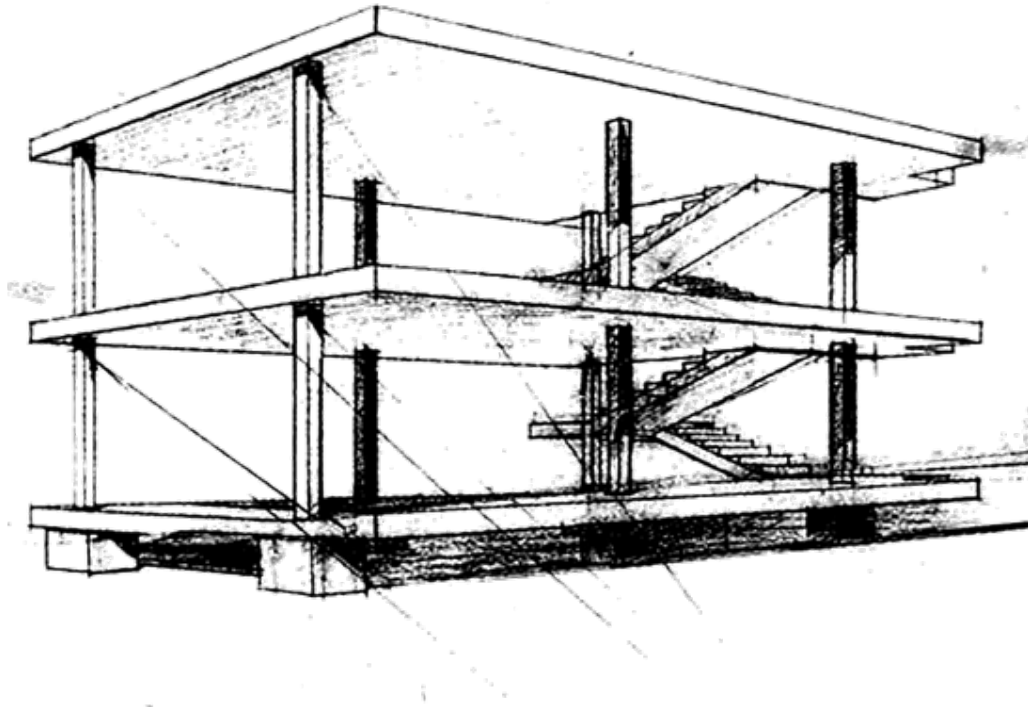
RUE MAUVERNEY

ROUTE SUISSE

ideational centre



structure



Maison Domino, Le Corbusier, 1914



Les **cinq points** de l'architecture moderne, Le Corbusier 1927

pilotis

toit-terrasse

plan libre

fenêtre en longueur

façade libre

naturally lighted parking

solar power plant and skylights

flexible social space

spatial continuity inside - outside

multifunctional skin

recources

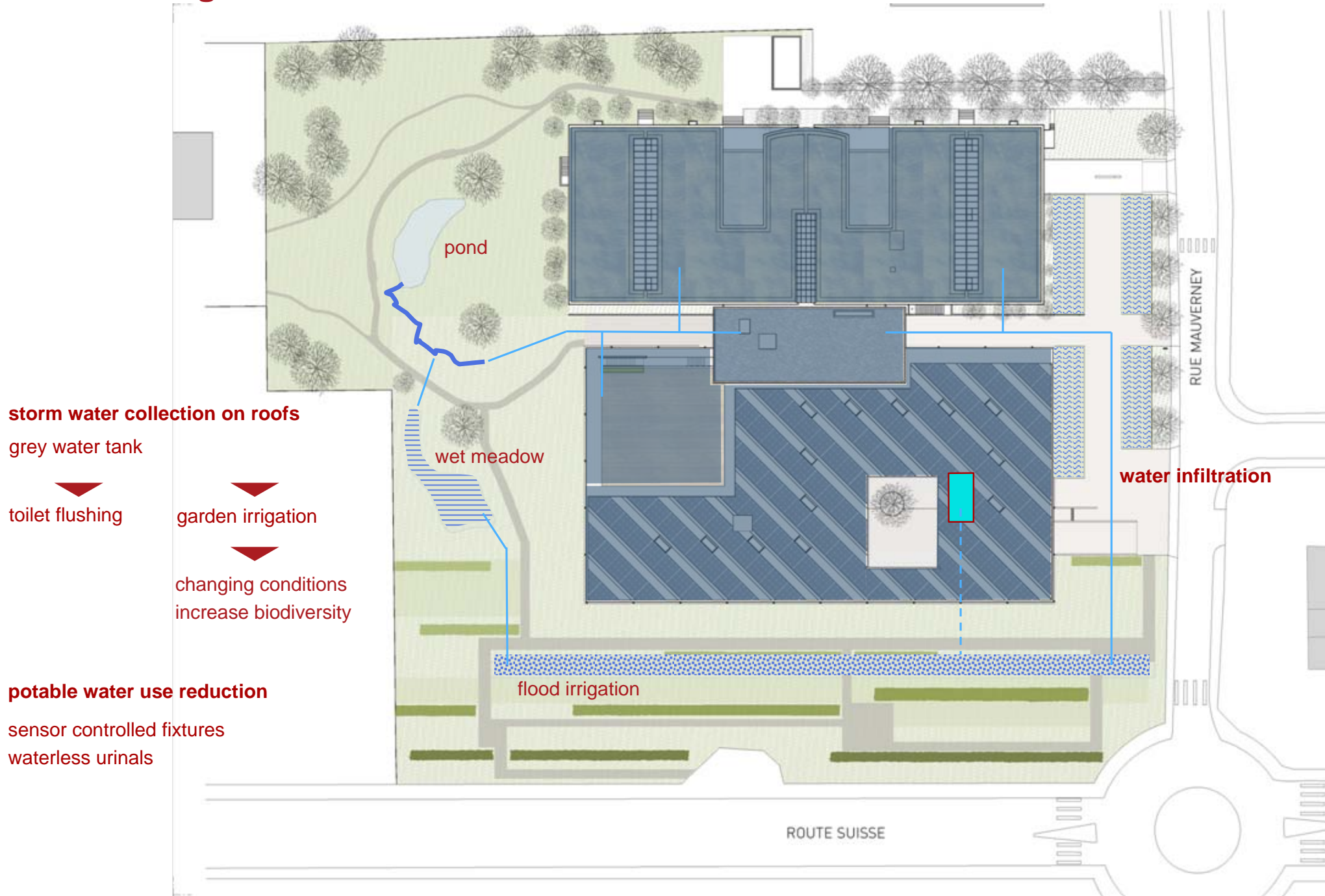


natural resources on site



recycling, reuse

water management

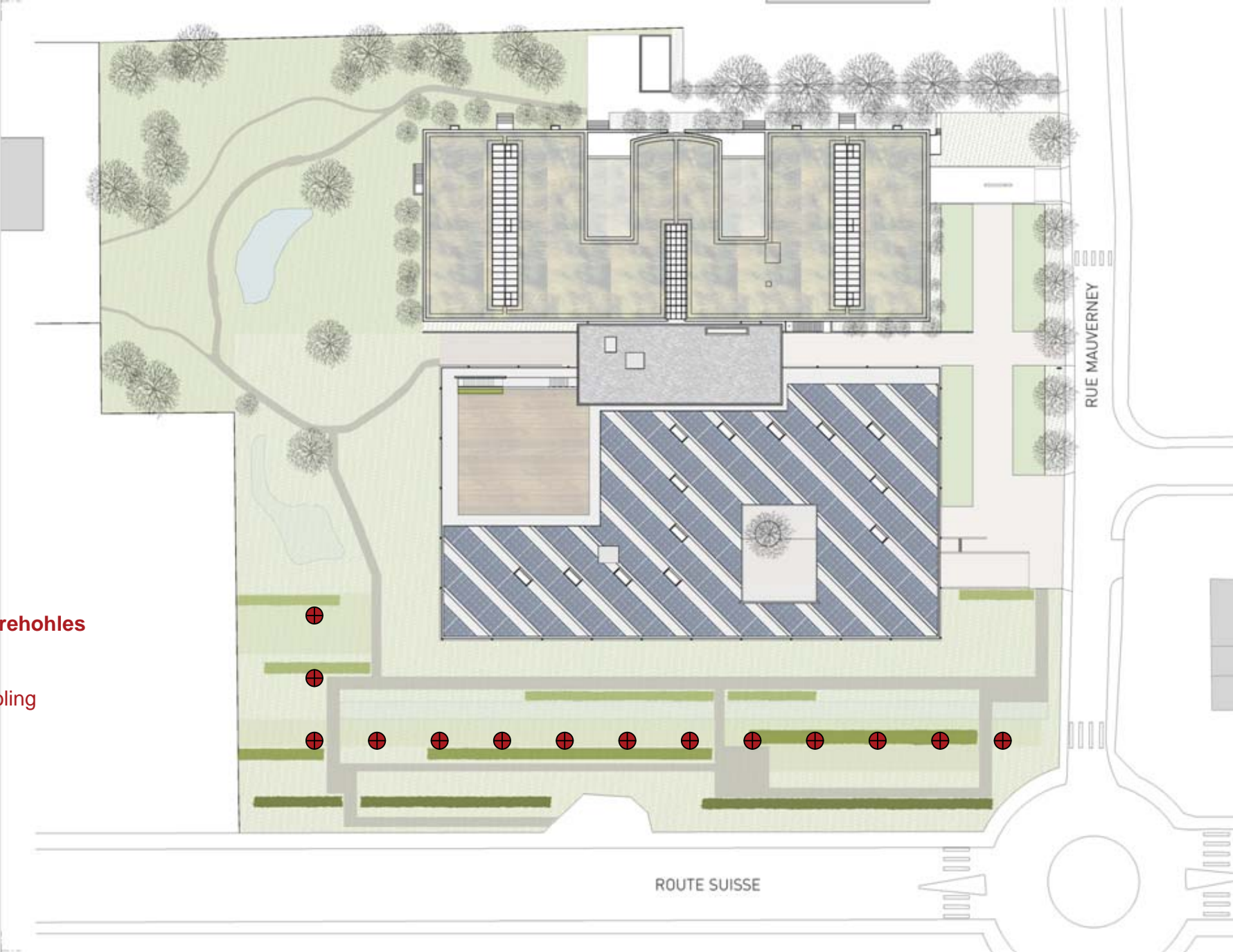




geothermal energy

15 geothermal boreholes

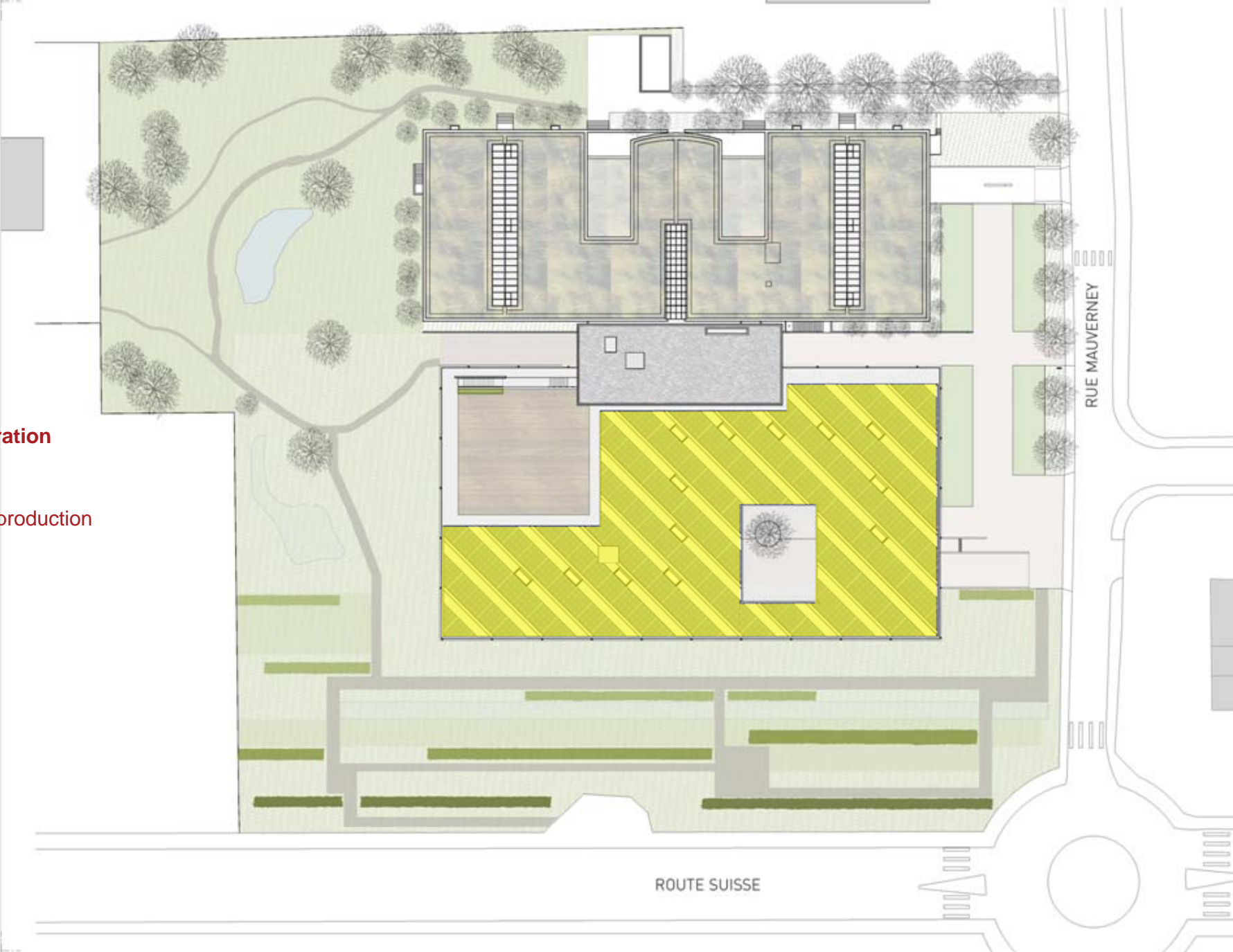
180 m deep
for heating and cooling



solar power

zero emission operation

150 kilowatts
CO2-free electricity production



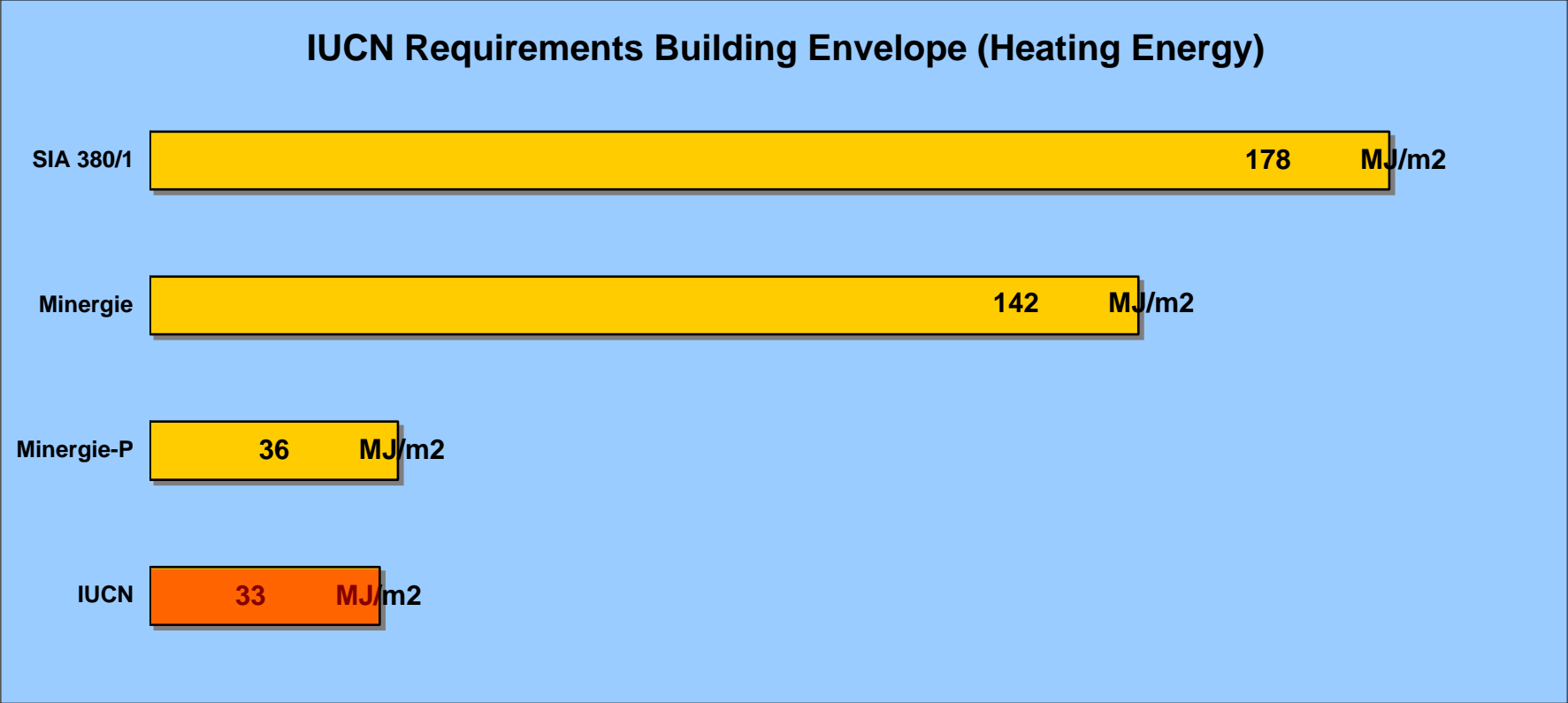
solar power

covering 70% of the total energy consumption

including heating, cooling, ventilation, lighting, computers...



energy requirements



grey energy – economy of means

primary structure

exposed concrete remains visible
as **space defining** element

interior fittings

minimized to the essential

multiple use of the components

such as the **ceiling panels** for

- heating and cooling
- exhaust air/ CO2-sensors
- lighting/ light sensors
- sprinklers
- sound absorption



grey energy – local and sustainable sources/ recycling

primary structure

- recycled, carbon-reduced concrete slabs
- thermal mass controls the climate

facade

- structure: local, FSC certified wood
- organic oil coating
- mineral insulation

wood fittings

- FSC-certified
- organic oil coating

floor finish

anhydrite, limestone, quartz sand
as only floor layer

painting

mineral, solvent-free

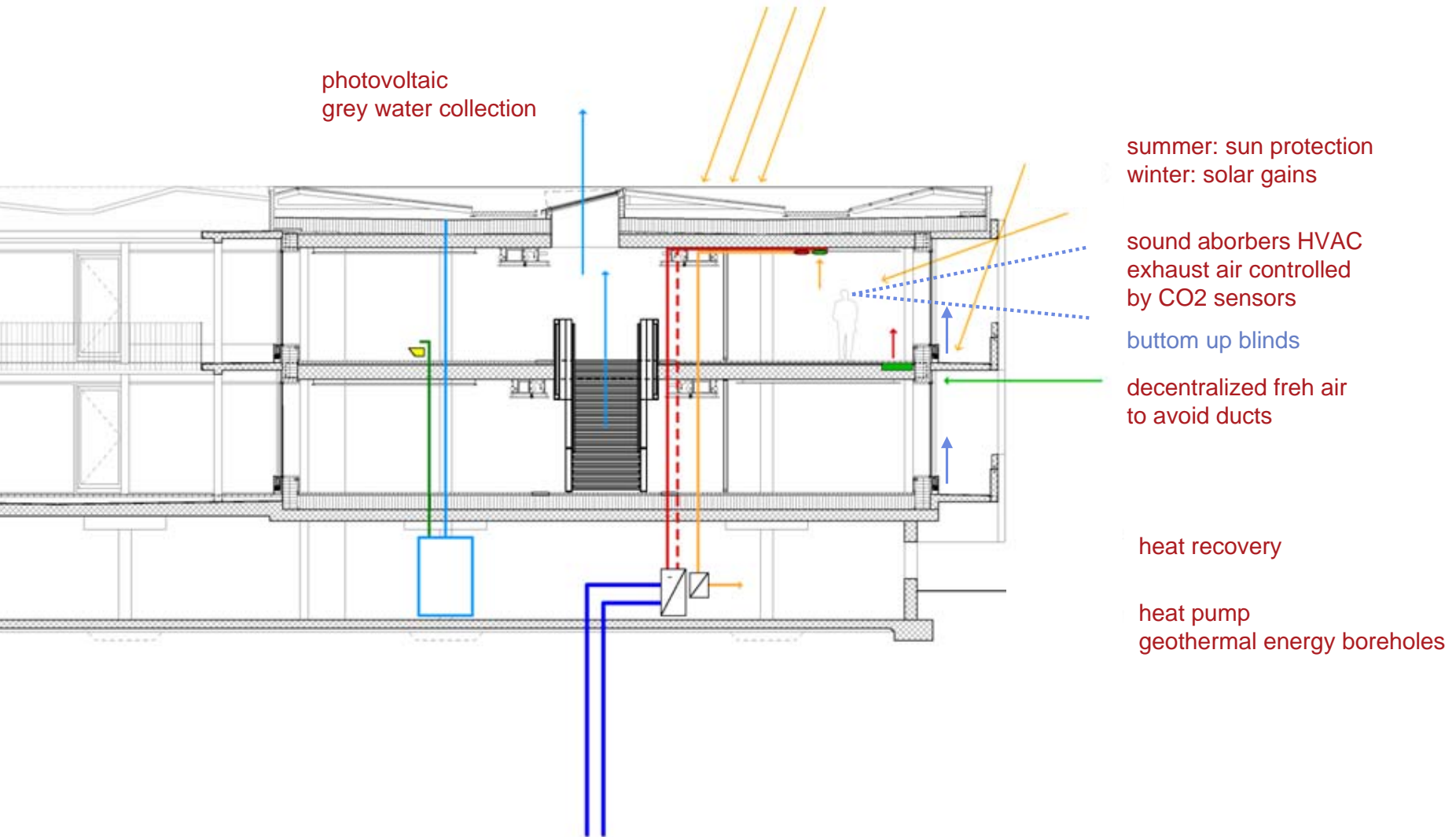
furniture

LEED certified supplier



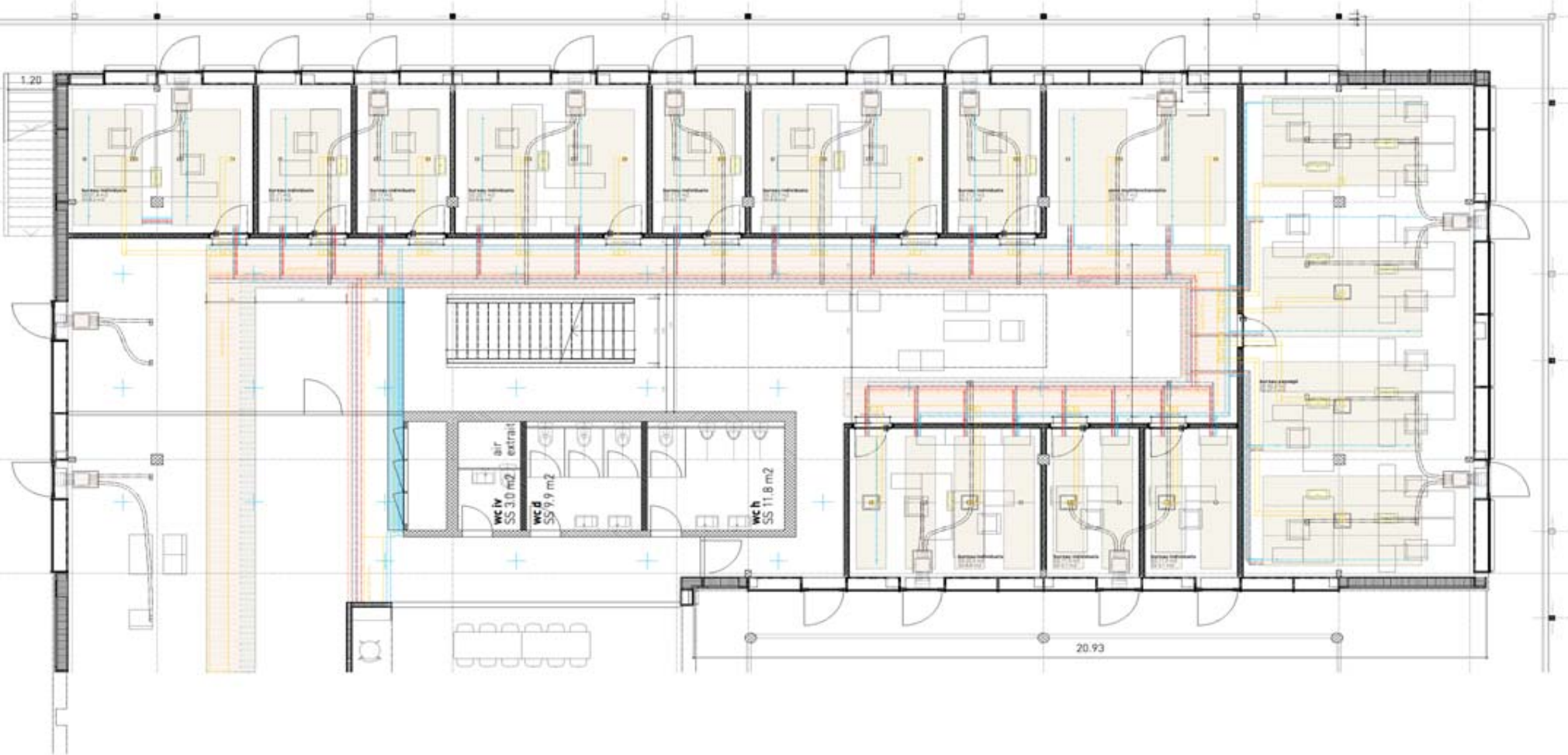
energy concept

building section

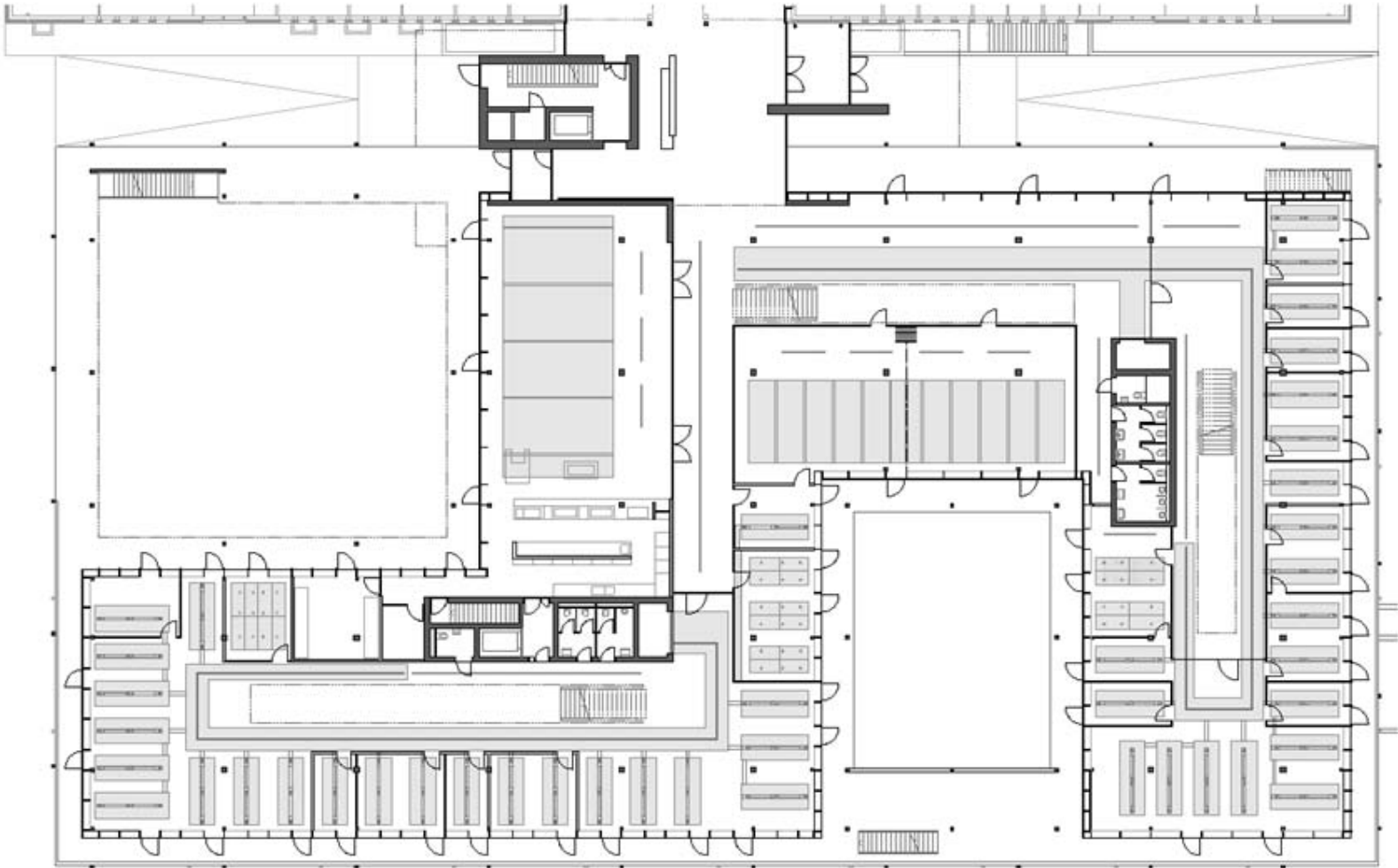




energy concept
floor plan

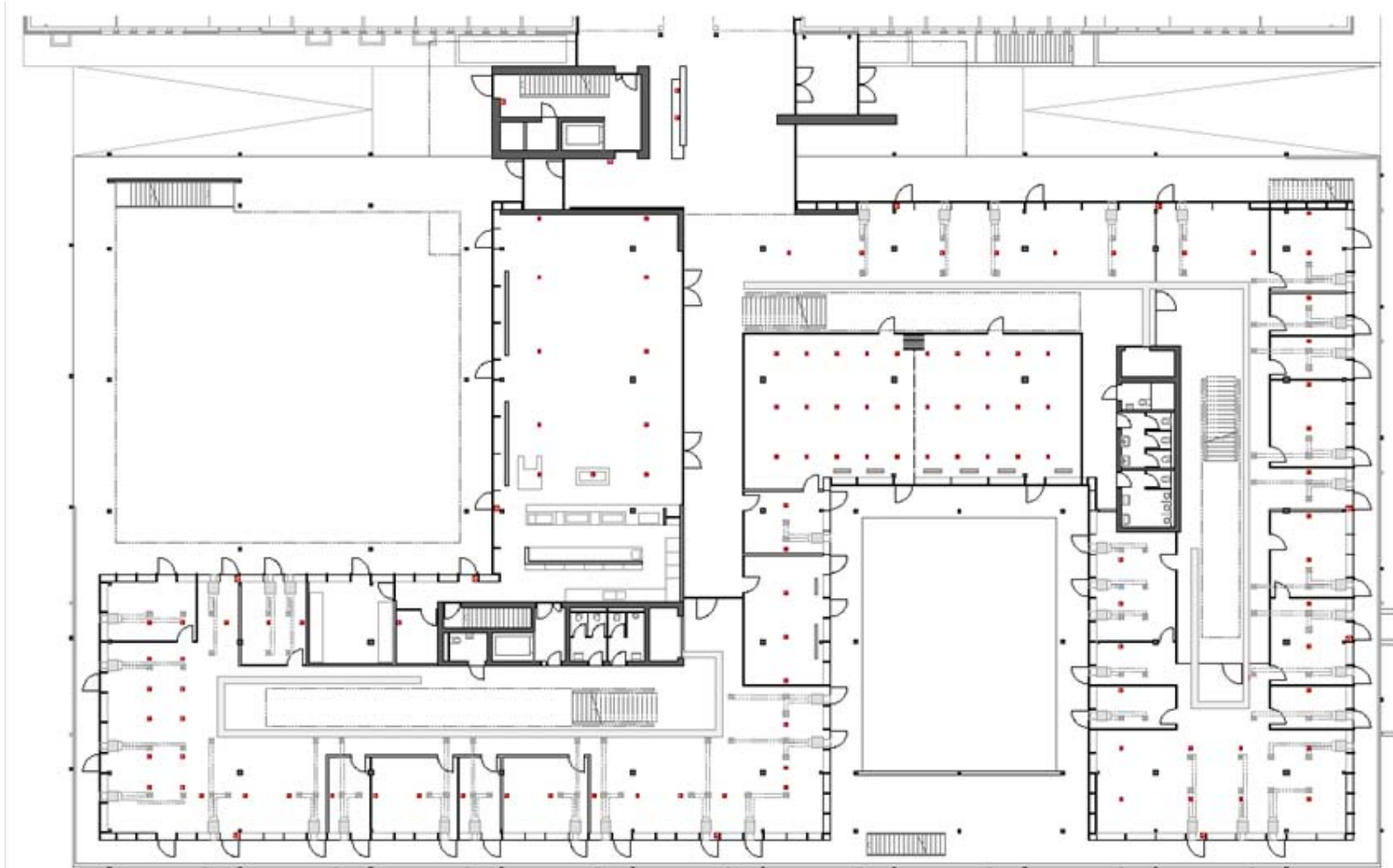


energy concept – flexibility



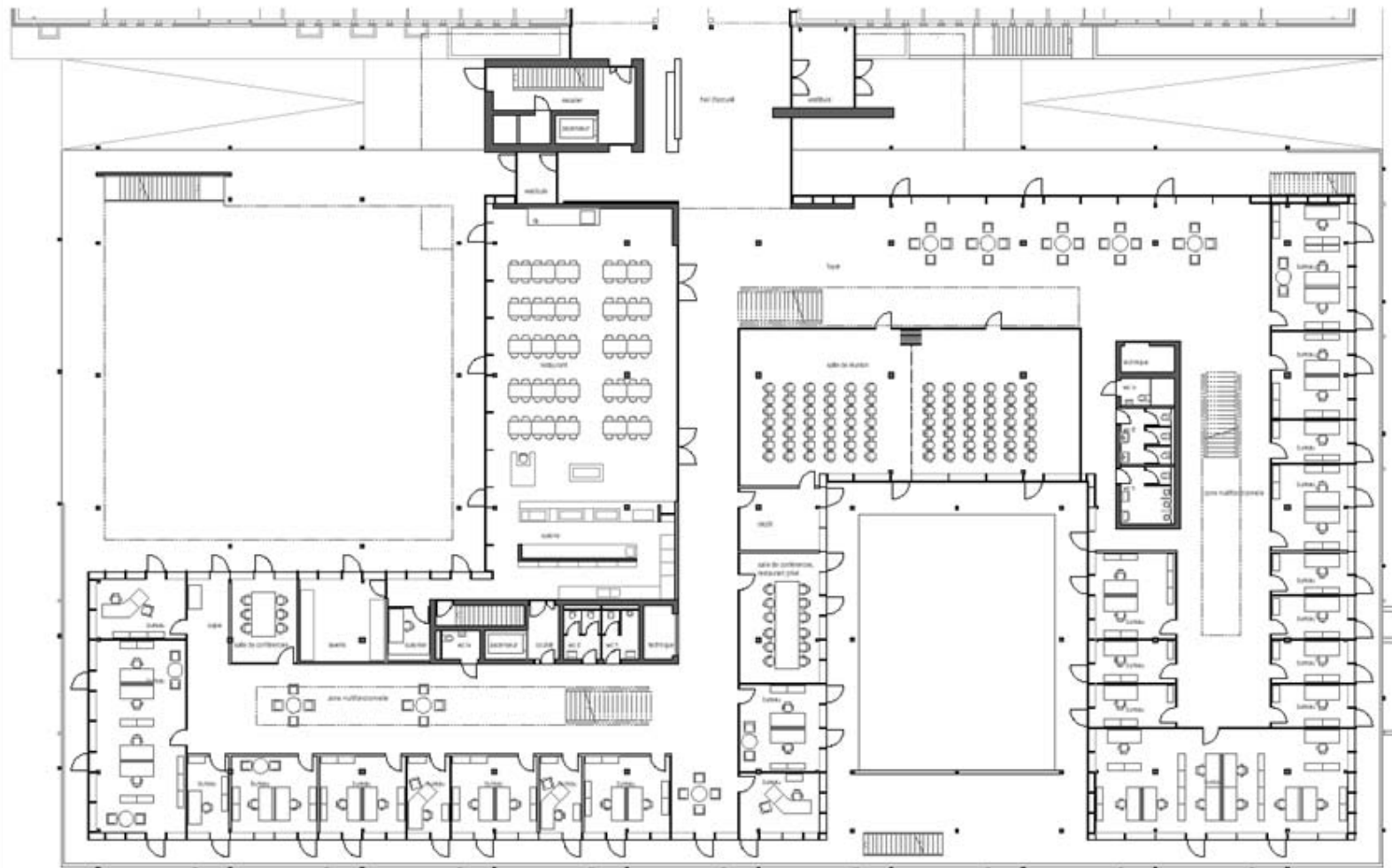
modular ceiling panels in line with ...

RICH CENTER EXTENSION - ISLAND
GROUND FLOOR
REFLECTING CEILING PLAN
SCALE 1:500
SEP 2010



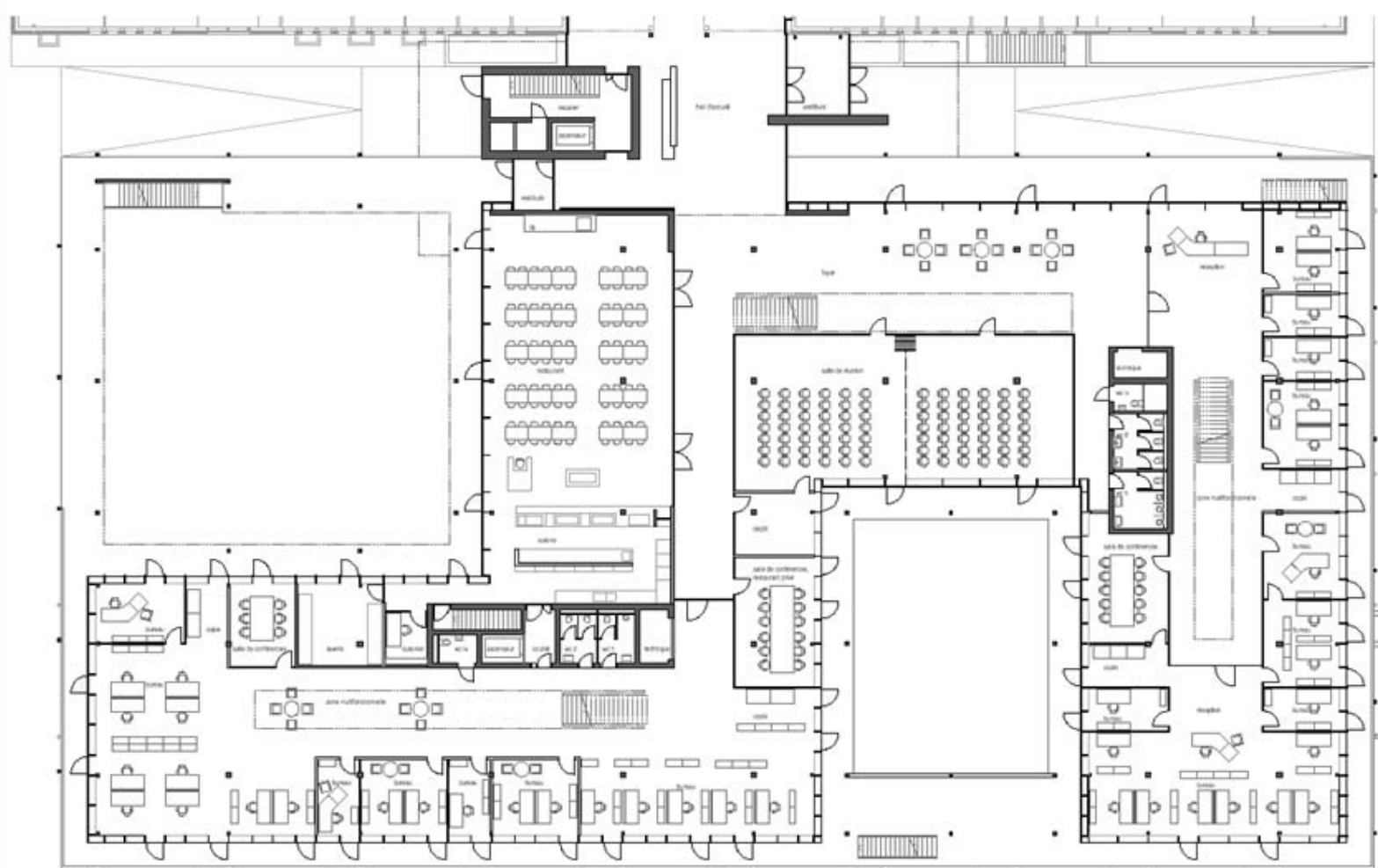
... modular air and electricity outlets and the modular facade grid ...

RICH CENTER EXTENSION - ISLAND
GROUND FLOOR
AIR HANDLING UNITS / POWER OUTLETS
TOTAL 1/20
10/11/2010



... allow a flexible mix of open space and traditional offices ...

SICK CENTER EXTENSION - ISLAND
 GROUND FLOOR
 OFFICE ARRANGEMENT OPTION
 SCALE 1:50
 DATE 1/2000



... allow a flexible mix of open space and traditional offices ...

RICH CENTER EXTENSION - GRAND
GROUND FLOOR

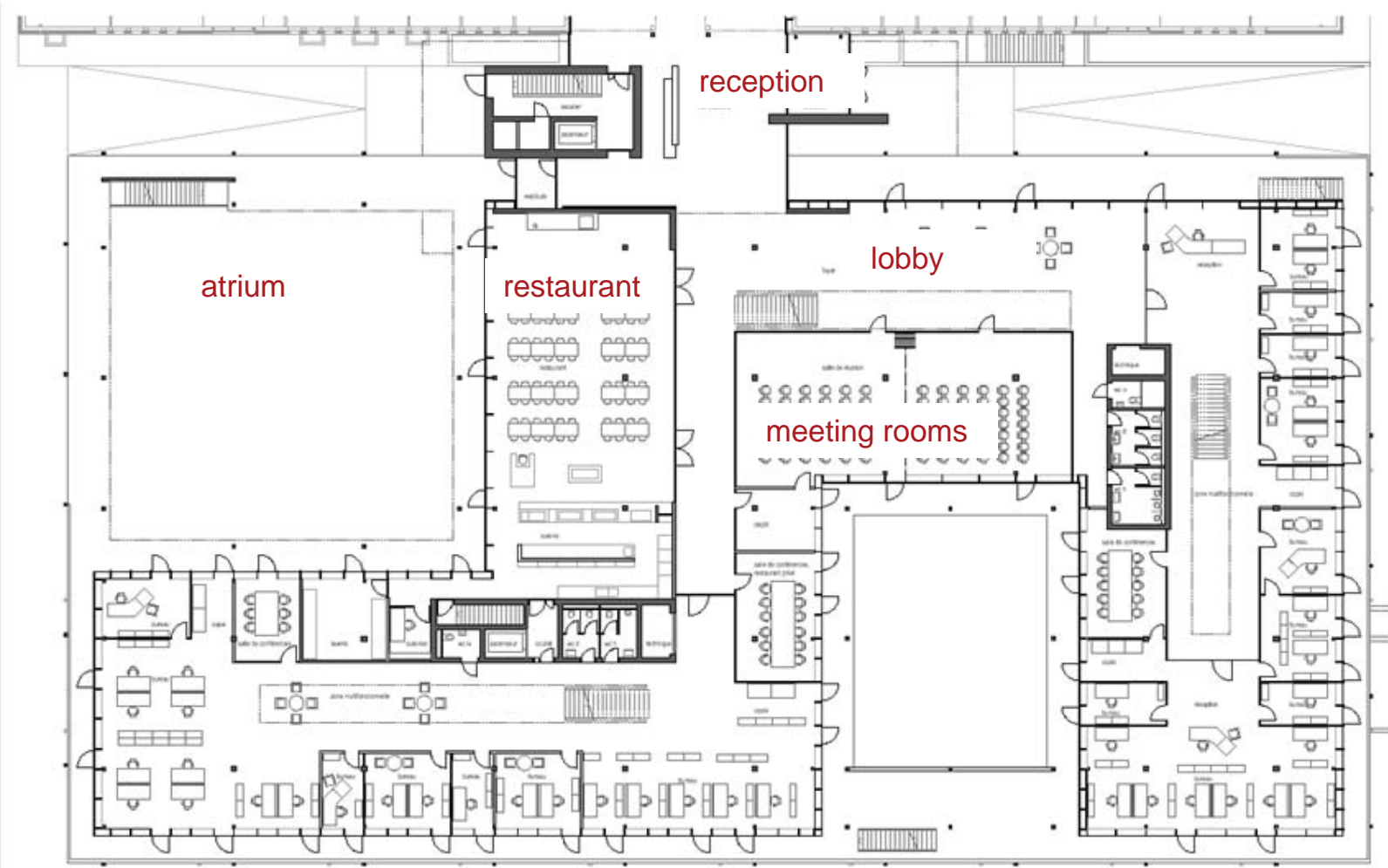
TOTAL 130K
SHEET 1 OF 1



... of individual and privat space...

... adaptable over time with flexible wall systems ...

ground floor



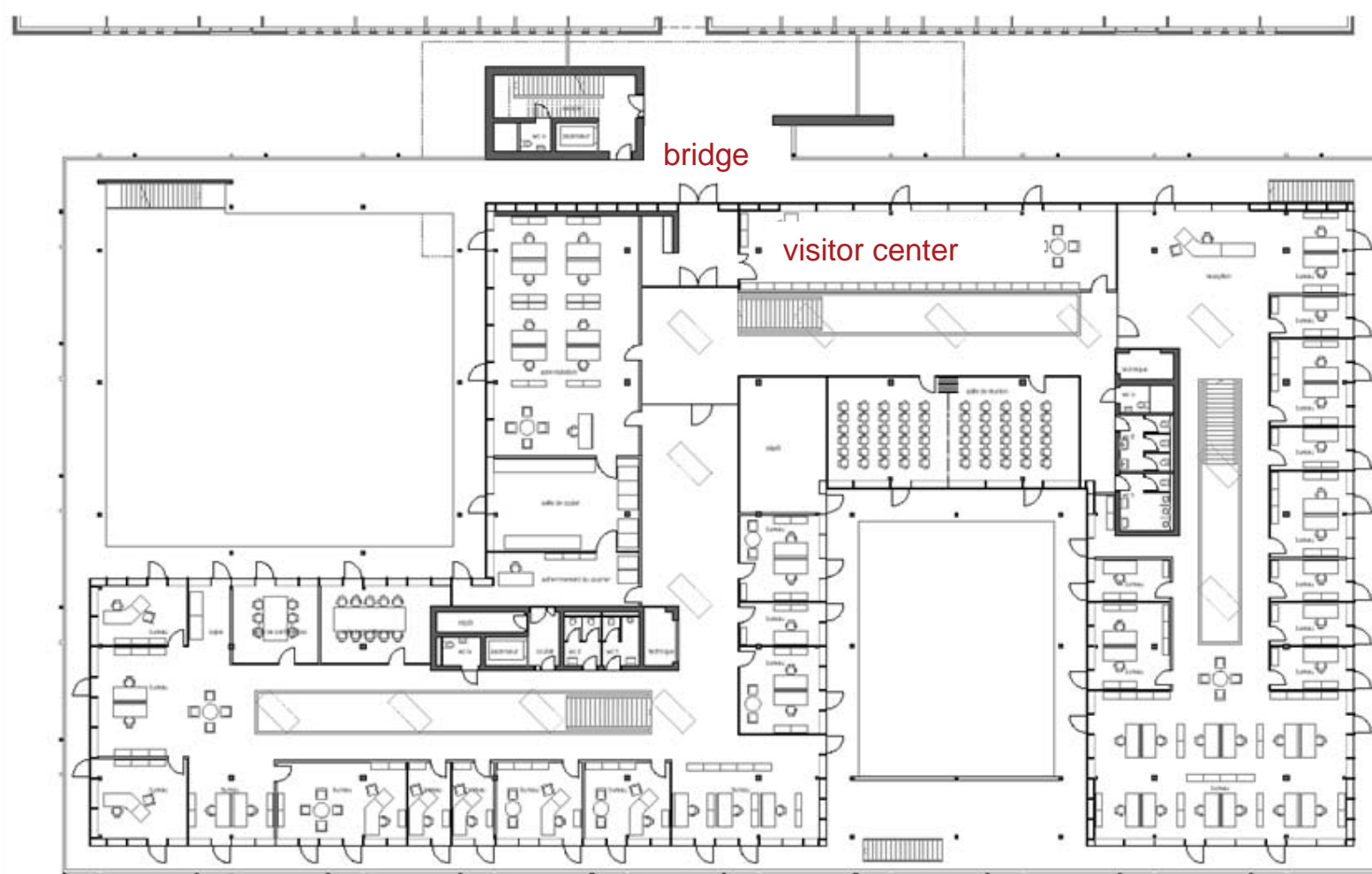
... enabled by the circular balconies that serve as escape routes – liberating the interior from fire restrictions

SKIN CENTER EXTENSION - ISLAND
GROUND FLOOR
TOTAL 1,100
sqm ± (30,000 sqft)





first floor



VISITOR CENTER EXTENSION - GRAND
FIRST FLOOR

TOTAL 1,100
sq. ft. (approx.)



attic

