



The Austrian smart cities and their indicators – results and expectations in Austria

Smart City PROFILES

United Smart Cities Workshop, February 10th 2015, Goris, Armenia

Alexander Storch – Environment Agency Austria

Total of 2102 communities and 8 499 759 inhabitants (2013-10-31)




Largest city and capital of Austria: **Vienna** (Wien) with 1 761 738 inhabitants

Second largest city and capital of Styria: **Graz** with 269 211 inhabitants

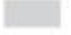
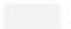
86 cities larger than 10 000 inhabitants, with 47.0 % share of total population

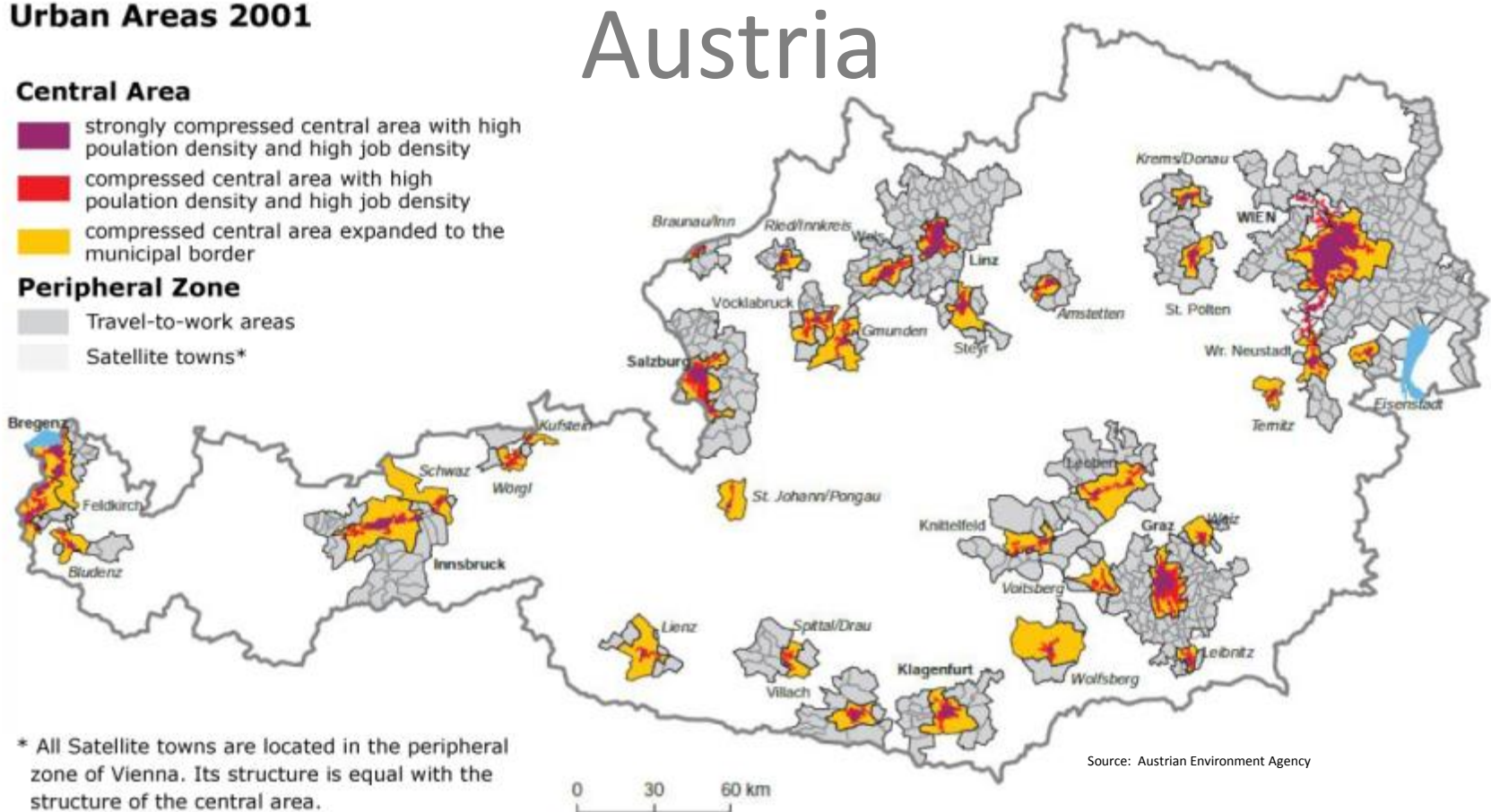
Urban Areas 2001

Central Area

-  strongly compressed central area with high population density and high job density
-  compressed central area with high population density and high job density
-  compressed central area expanded to the municipal border

Peripheral Zone

-  Travel-to-work areas
-  Satellite towns*



What are Smart Cities ?

- Cities, which are ready to meet their economic, social and environmental challenges with implementation of **continuous learning** and **co-ordinated steering** the urban development at all relevant municipal activities.
- Cities, which strive to increase energy efficiency and renewable resources, to reduce environmental pollution or which plan and implement climate change mitigation measures applying multi-disciplinary **system thinking** and **participative approaches**.
- Cities, which starting transformation to an **attractive** and **intelligent** community regarding long-term policy targets improving **quality of live** for citizens and increasing **power to compete** for the economy.

Promoted Smart Cities and Regions in Austria

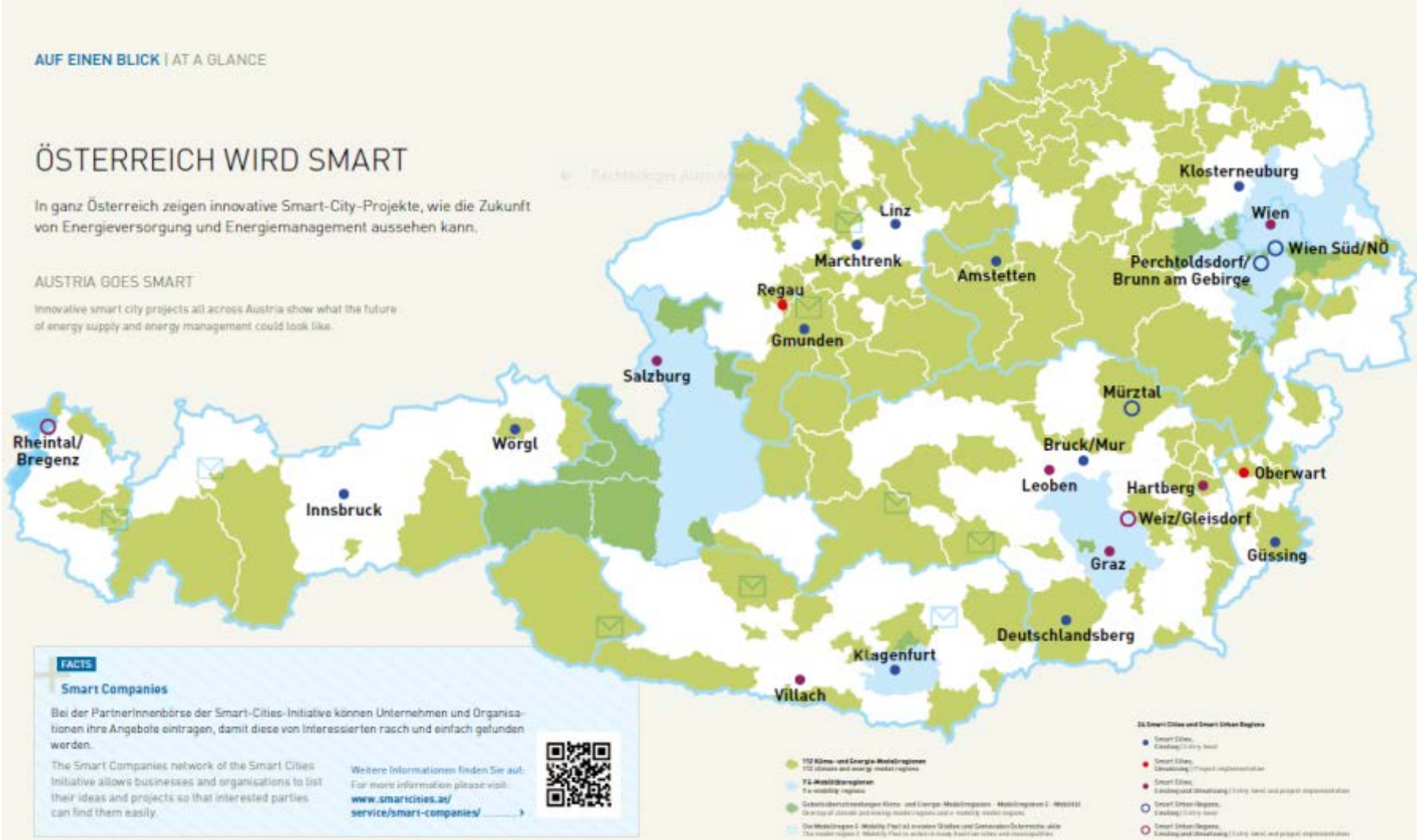
AUF EINEN BLICK | AT A GLANCE

ÖSTERREICH WIRD SMART

In ganz Österreich zeigen innovative Smart-City-Projekte, wie die Zukunft von Energieversorgung und Energiemanagement aussehen kann.

AUSTRIA GOES SMART

Innovative smart city projects all across Austria show what the future of energy supply and energy management could look like.



FACTS

Smart Companies

Bei der PartnerInnenbörse der Smart-Cities-Initiative können Unternehmen und Organisationen ihre Angebote eintragen, damit diese von Interessierten rasch und einfach gefunden werden.

The Smart Companies network of the Smart Cities Initiative allows businesses and organisations to list their ideas and projects so that interested parties can find them easily.

Weitere Informationen finden Sie auf:
For more information please visit:
www.smartcities.at/service/smart-companies/



Source: Smart Cities Initiative #2 2014, The Climate and Energy Fund, Austria



umweltbundesamt

SMART CITY
PROFILES

Smart City PROFILES

Dedicated areas of activity
in urban development

**Buildings and
settlement
structure**

**Transport
and mobility**

**Technical
infra-
structure**

**Economy and
citizens**

**Policy,
administration
& governance**

Smart City PROFILES

Benefits using indicators for city planning

- Identification of **strengths** and **weaknesses** with regard to areas of activity in urban development
 - Facts about the structure and performance of areas
 - Information about their change and reasons up to the present
 - Identification of city characteristics and up-coming trends
- Supporting **objectified communication**: Targeted discussions and support in deciding which action is needed
 - regarding certain topics within these areas of development setting priorities
 - in defined areas of development or as an integrated overview
- Basis for **monitoring**

Components of the areas of urban development

Buildings and settlement structure	Transport and mobility	Technical infrastructure	Economy and citizens	Policy, administration & governance
Infil development versus urban expansion	Modal Split	Electricity consumption	Innovation (patents)	Environmental information
Changes in population density	Basic infrastructure	Recycling rate	Research (EU projects)	Vision, strategy, activities
Compact residential clusters	Sustainable mobility	Waste generation	Creative industries	Municipal subsidies to mitigate climate change
Energy efficient buildings	Parking management		Education network	Involvement of city administrations
			EMAS-certified businesses	Cooperation between cities and their surrounding areas



Smart City PROFILES

Presentation of results

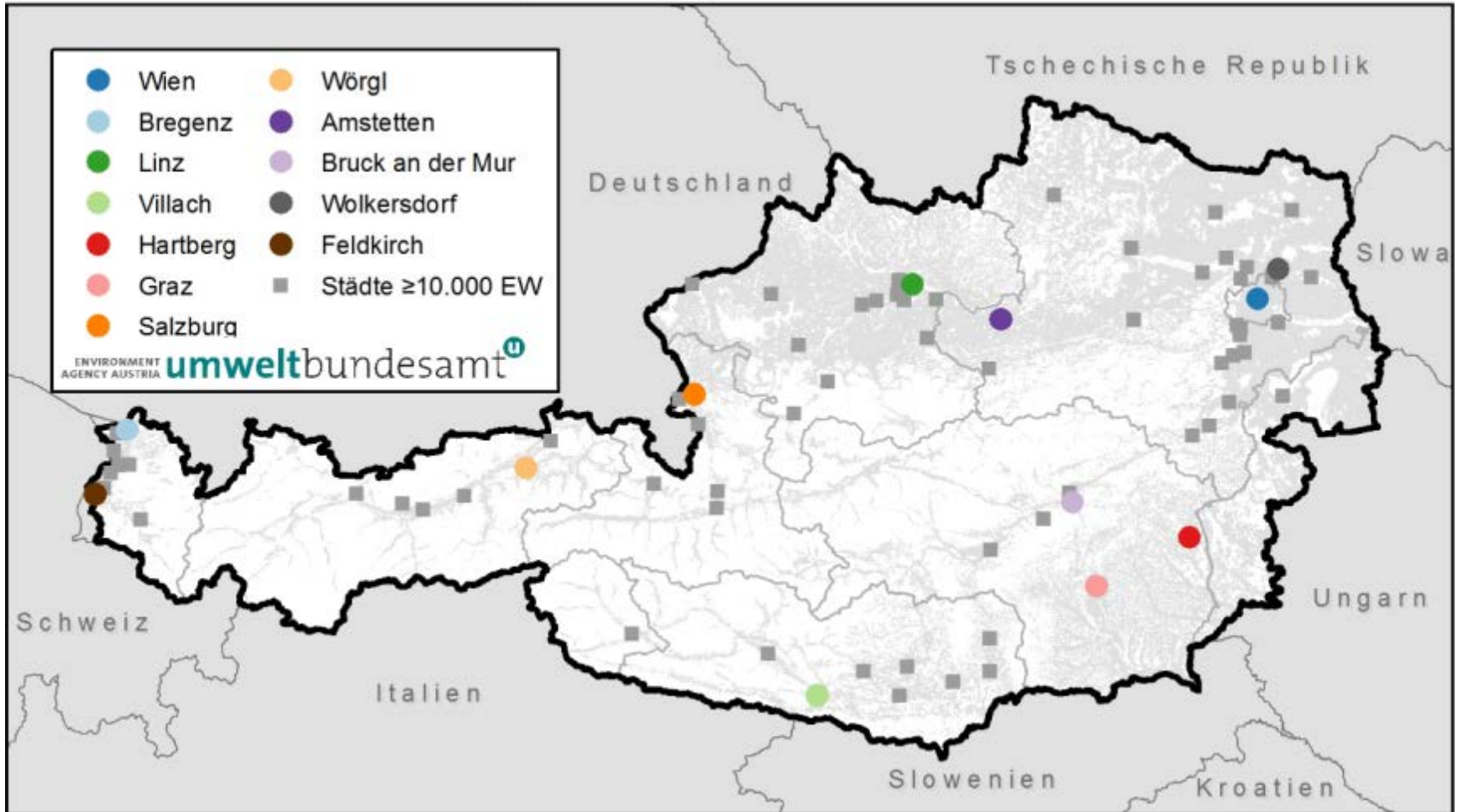


A Smart City Profile consists of

- **Basic data** of a city
- **Spider diagram** showing all areas of development including most relevant evaluation summaries
- **Five spider diagrams for each area of development** including some explanations and interpretation
- **Individual components (optional)** as a starting point for targeted, in-depth analysis

Smart Cities PROFILES municipals

Teilnehmende Städte Smart City PROFILE, sowie Städte und Gemeinden ab 10.000 EW

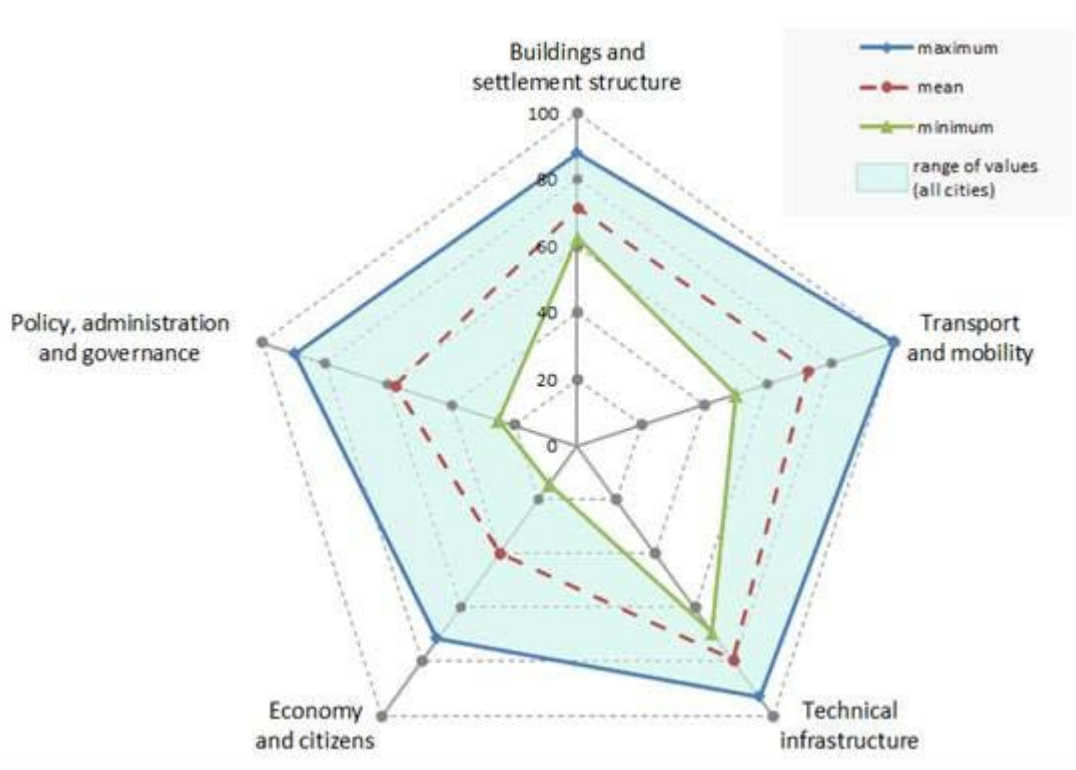


Quelle: Statistik Austria: Bevölkerungsstand 1.1.2012

Source: Environment Agency Austria

Smart City PROFILES

result presentation – spider diagram



City Profile for the 12 cities, which participated in the development of smart cities indicators and city profiles.

The diagram shows the range of results for the 12 participating cities across the 5 core areas of activity in urban development.

It allows cities to make better evaluations of their current status and their development in relation to defined indicators.

The maximum of all core areas/indicators (100) gives the fictitious smartest city.

Smart City PROFILES

measuring cities change
from a policy perspective



Source: Alexander Storch



Source: Alexander Storch



Source: Fotolia



umweltbundesamt[®]

SMART CITY
PROFILES



Smart City PROFILES

supporting integrated urban development

- Makes urban development and results **measurable** and **transparent**
- Encourages the **involvement** of relevant stakeholders
- **Fosters exchange** of experience and knowledge gain through an analysis of strengths and weaknesses
- Focuses on potential **needs for action** in urban development areas
- **Supports** strategic goals, implementation-oriented concepts and the resulting activities
- Reliable **Decisions** are based on facts
- Professional and visible **communication** of activities and results

Smart City PROFILES

expectations for Austria

- Building up an **internet platform** on Smart City indicators and profiles hosted by *'The Austrian Association of Cities and Towns'* for continuation of monitoring, automatisisation and to address new cities for participation
- Looking to corresponding indicators for planning of Smart City **districts** and **quartiers**
- Accompanying national standardisation committees with Smart City PROFILES know-how and experience to assist on-going ISO committees on smart city **standardisation** of terms, processes and indicators

Smart City PROFILES

interaction with other integrated approaches

Examples of related policy issues and methodologies using integrated assessment based on indicators are

- **Quality of live** in cities
- Multifunctional **eco-service** optimisation of urban regions
- Urban **Scenarios**, analysis of **Driving Forces** and **Horizon Scanning**
- **Resource efficiency** over life-cycle and **ecological footprint**
- **Climate Change** mitigation and adaptation
- Vulnerability, Adaptability and **Resilience**

Smart City PROFILES



Source: Alexander Storch

Alexander Storch

T: +43-(0)1-31304-5965

E: alexander.storch@umweltbundesamt.at

Contact



umweltbundesamt[®]

SMART CITY
PROFILES

