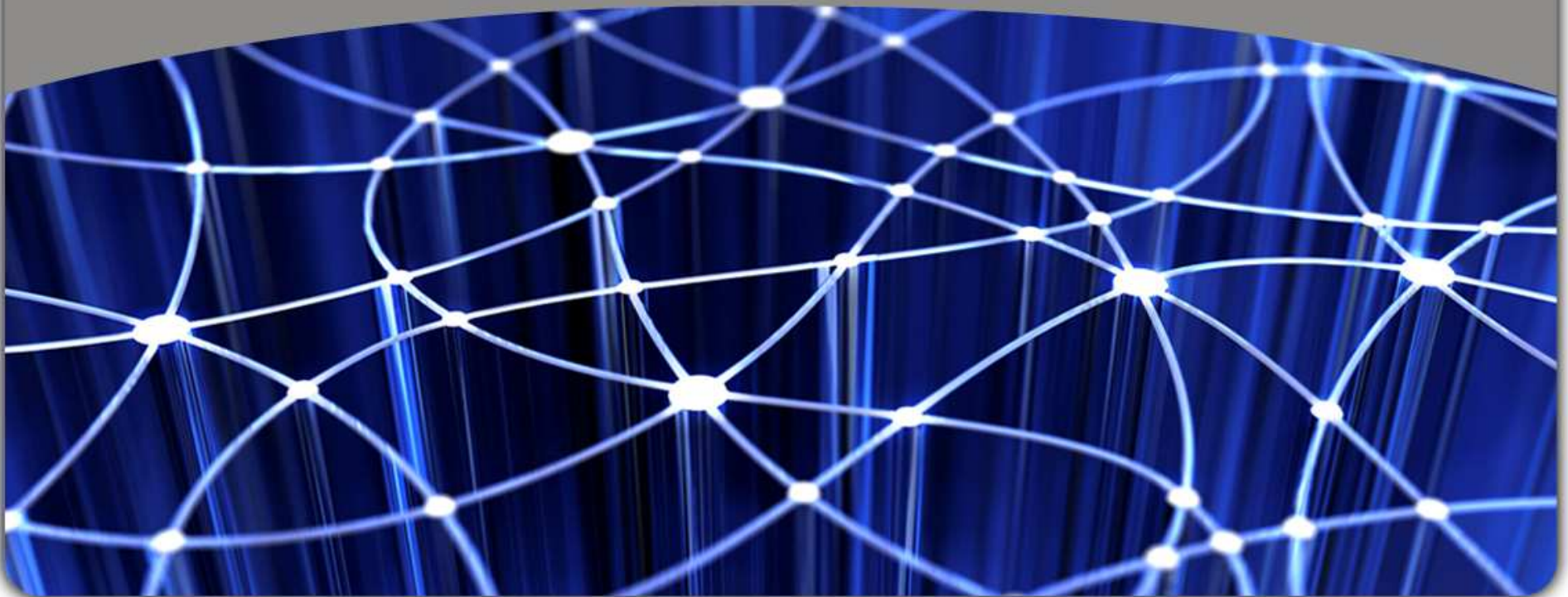


A white five-pointed star icon with a white line extending from its top-left point towards the top-left corner of the slide.

7th Session of the WPLA

Cooperation with other International Organisations

Dave Lovell EuroGeographics Secretary General and Executive Director
June 2011



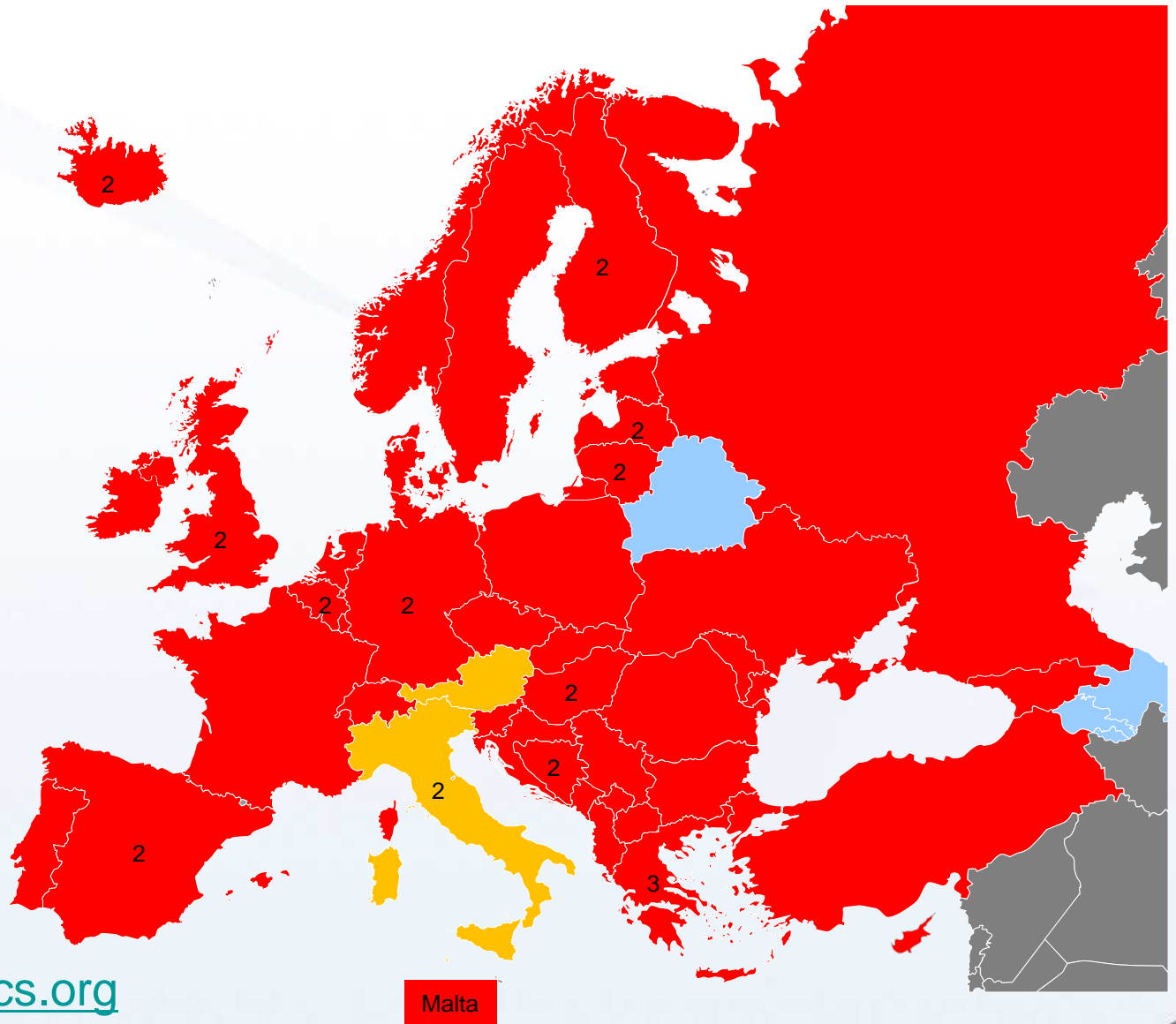
- Supporting Land administration
 - Knowledge Exchange and information sharing;
 - A new vision for Cadastre;
 - Policy Engagement;
 - Projects – ESDIN & the European Cadastral index;
- Encouraging Cooperation
 - MOUs;
 - Projects;
 - Actively Cooperating

EuroGeographics – who?



- Active
- Associate
- Non member
- Out of scope

56 members
44 countries



EuroGeographics – what and why?



The European Voice
for Geographic Information



The European
Location
Framework
(the E.L.F.)

The E.L.F
services

EuroGeoCloud
(services
infrastructure)

ESDIN

Medium Term
Business Plan

EU Affairs and
Representation

Effective
knowledge
exchange

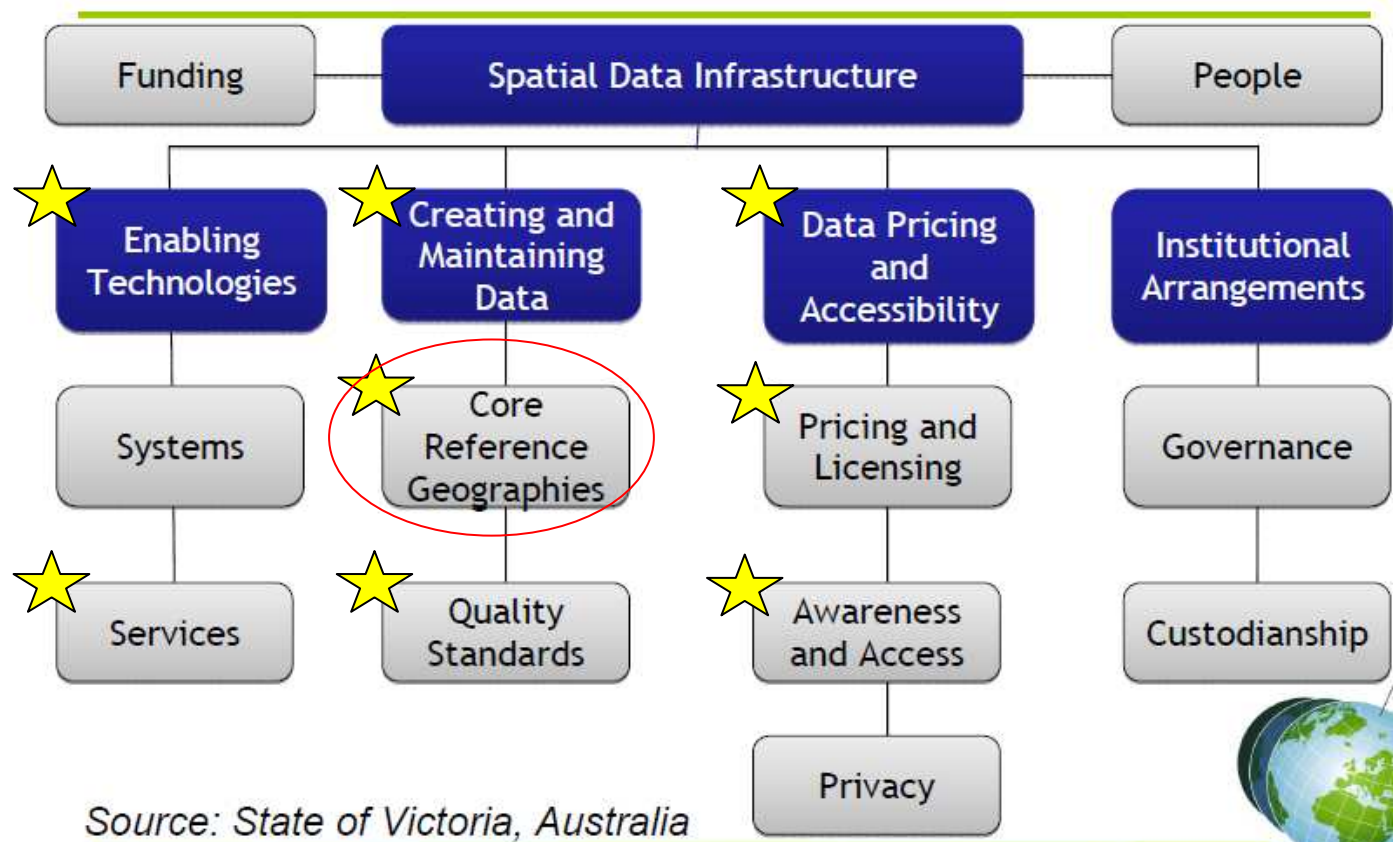
Pan-European
products

Constitutional
Change

Strategy



Components of an SDI



Source: State of Victoria, Australia



Annex I

- ★ Coordinate reference systems
- 2. Geographical grid systems
- ★ Geographical names
- ★ Administrative units
- 5. Addresses
- ★ Cadastral parcels
- ★ Transport networks
- ★ Hydrography
- 9. Protected sites

Annex II

- 1. Elevation
- 2. Land cover
- 3. Orthoimagery
- 4. Geology

Annex III

- 1. Statistical units
- 2. Buildings
- 3. Soil
- 4. Land use
- 5. Human health and safety
- 6. Utility and governmental services
- 7. Environmental monitoring facilities
- 8. Production and industrial facilities
- 9. Agricultural and aquaculture facilities
- 10. Population distribution – demography
- 11. Area management/regulation zones & reporting units
- 12. Natural risk zones
- 13. Atmospheric conditions
- 14. Meteorological geographical features
- 15. Oceanographic geographical features
- 16. Sea regions
- 17. Bio-geographical regions
- 18. Habitats and biotopes
- 19. Species distribution
- 20. Energy resources
- 21. Mineral resources



INSPIRE

Many Strengths

- Legal framework – mandatory compliance by MSs;
- Created cooperation

.....

Some Weaknesses

- ★ It creates 27 NSDI but does little to create a European SDI;
- ★ Edge-matching at national borders is left to 27 MSs to resolve;
- ★ It says little about data quality
- ★ No funding



- ★ A better understanding of user requirements
- ★ Harmonised specifications for data
- ★ Transformation rules and services
- ★ A comprehensive quality assurance approach, including automation of quality evaluation services
- ★ Generalisation rules and services
- ★ A modular approach to pricing and licensing and a Geo Product Finder

- ★ A more efficient way of gaining access to the data
– Federations authenticated by Shibboleth
- ★ Tools for testing the infrastructure
- ★ Proposals and tools to manage maintenance and updates
- ★ A solution to technical architecture
- ★ On-line demonstrator of [Download and View services](#)

Testing the Infrastructure

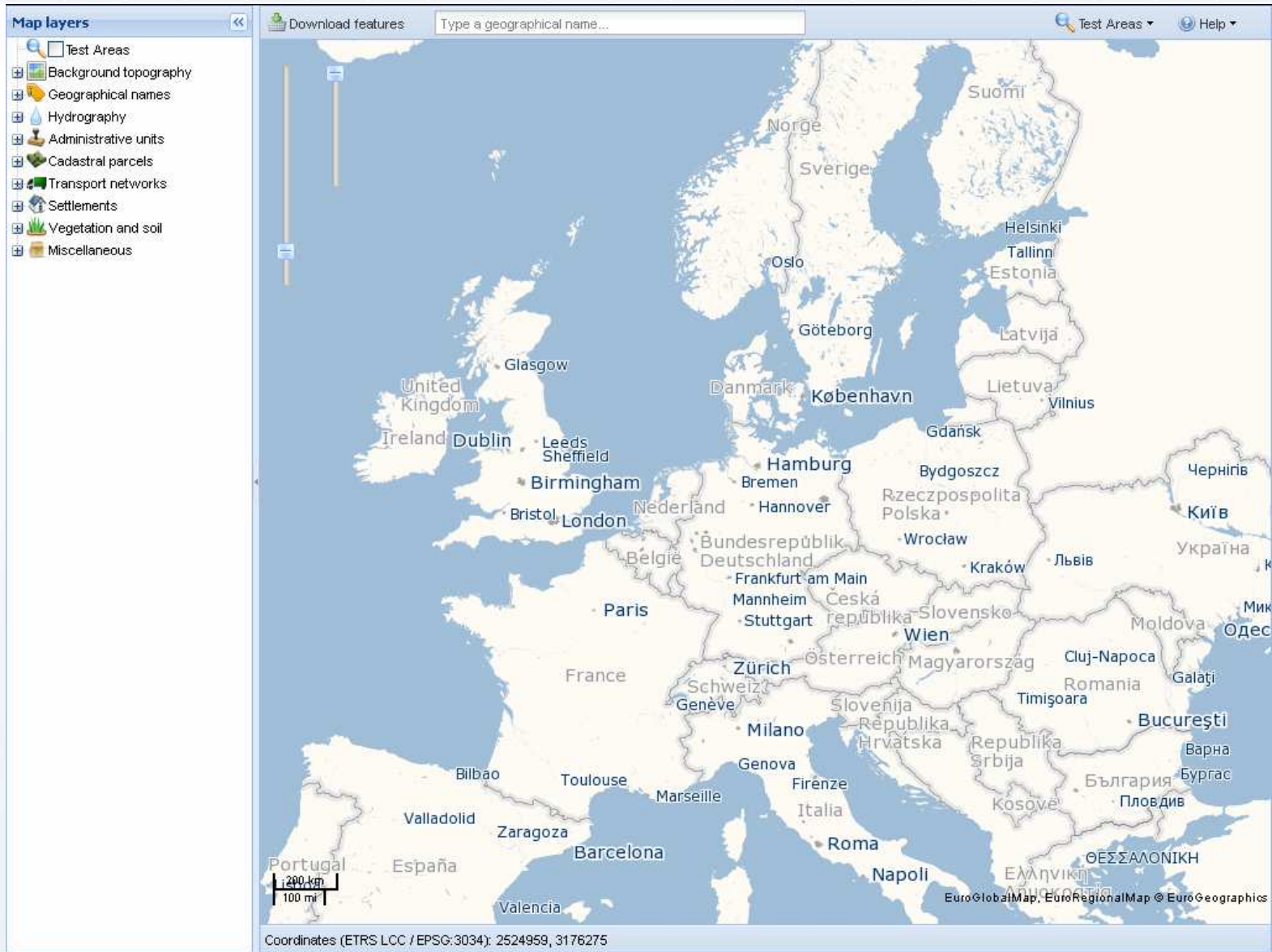
Reusable automated test components for:

- spatial data
- network services
- data production processes

ID	Description	Failure rate (%)
CR.D-1	GetCapabilities mandatory request parameters test	7%
CR.D-5	Get Spatial Objects Mandatory Request Parameters test	13%
CR.D-6	Get Spatial Objects Optional Request Parameter test.	53% (8/15)
CR.D-11	Describe Spatial Object Types Mandatory Request Parameters test	0%
CR.D-12	Describe Spatial Object Types Optional Request Parameters test.	0%

Tools are available under the BSD Open Source Licence

ESDIN - one step closer to a European Location Framework



ESDIN - one step closer to a European Location Framework



Map layers

- Test Areas
- Background topography
- Geographical names
- Hydrography
- Administrative units
- Cadastral parcels
- Transport networks
- Settlements
- Vegetation and soil
- Miscellaneous

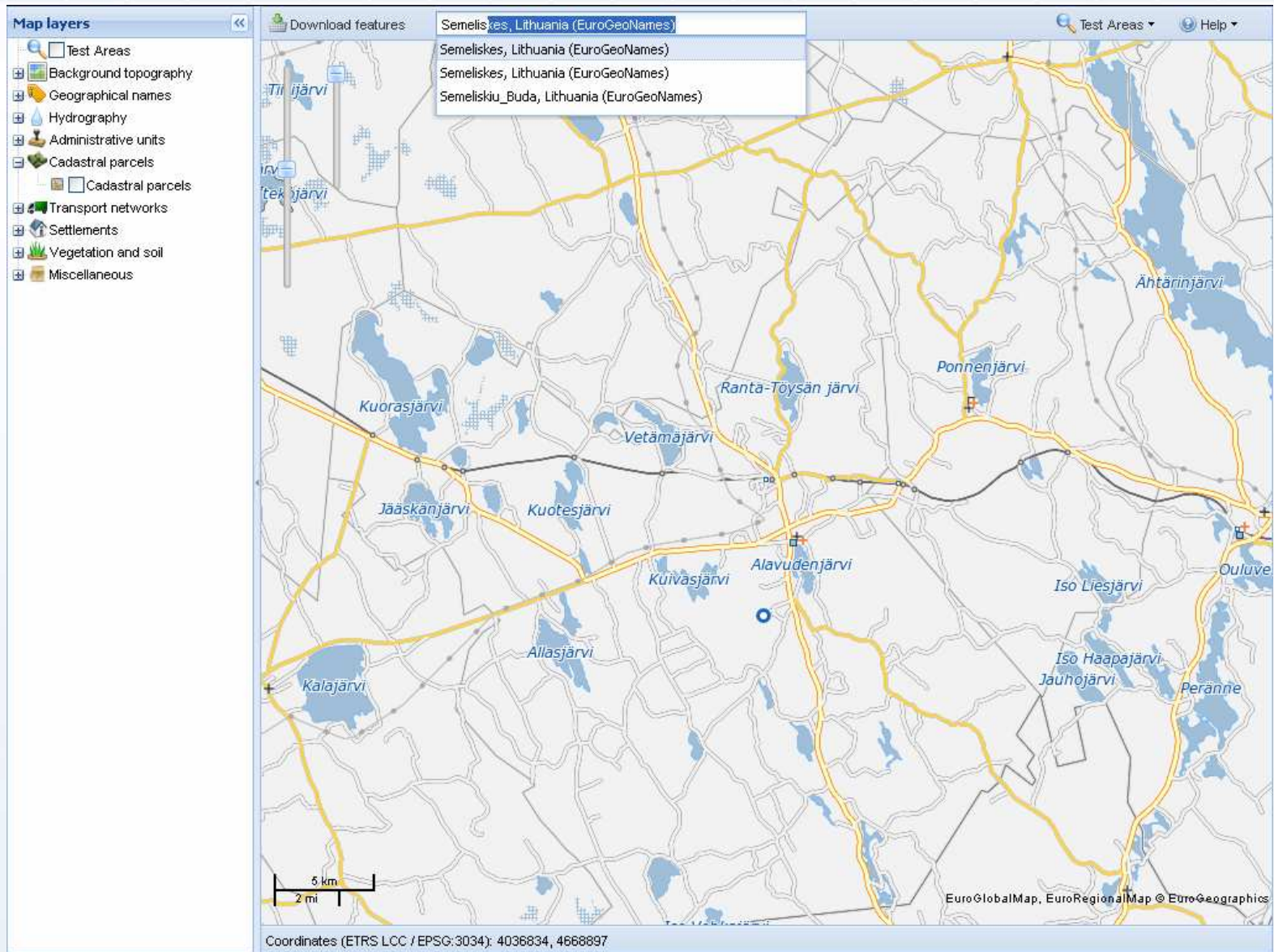
Download features: Type a geographical name...

Test Areas

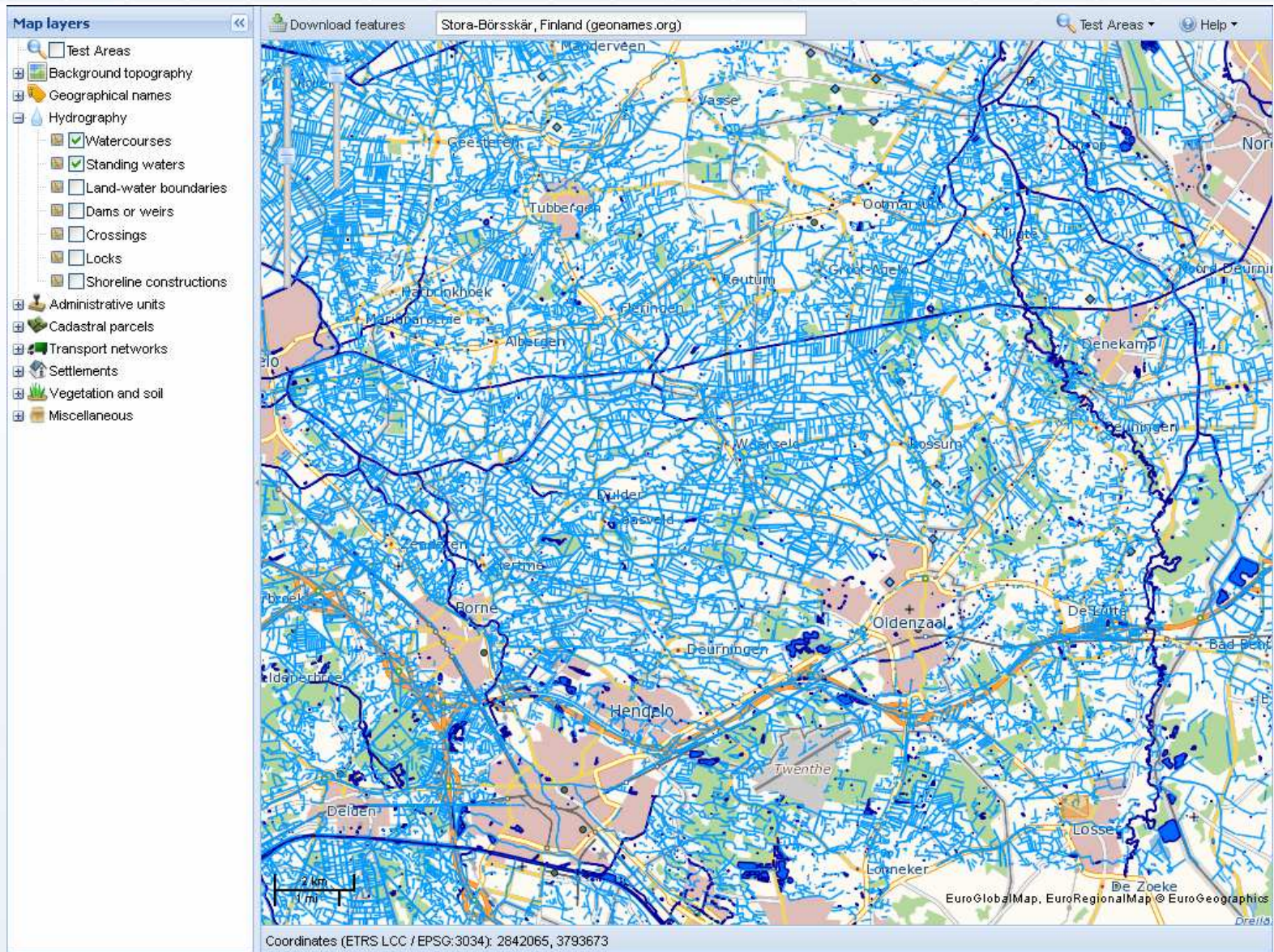
- The Netherlands and Germany: Middle border
- Norway and Sweden: Southern border
- Belgium and The Netherlands: Middle border
- Finland, Norway and Sweden: Northern border
- Baltic Sea: Southwest
- France and Belgium: Western border
- Austria and Hungary: Middle border
- Romania: Part of border with Hungary and Serbia
- ERM sample area 2: Finland, Estonia
- ERM sample area 4: Poland, Slovakia, Czech Republic
- ERM sample area 5: Luxembourg, Germany, France
- ERM sample area 6: Switzerland, Austria, Germany, Italy
- ERM sample area 7: France, Italy

EuroGlobalMap, EuroRegionalMap © EuroGeographics

ESDIN - one step closer to a European Location Framework



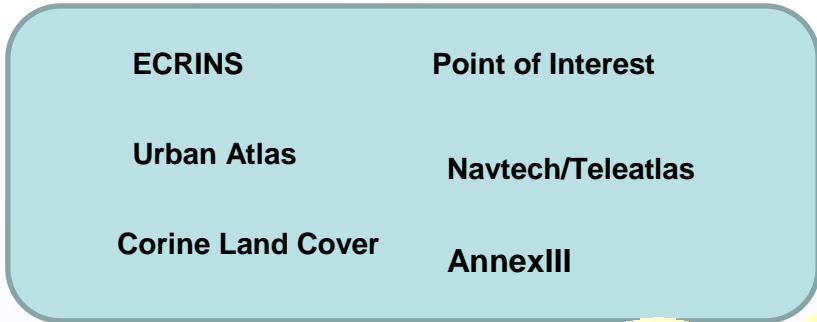
ESDIN - one step closer to a European Location Framework



ESDIN - one step closer to a European Location Framework

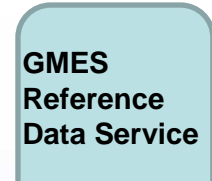


Additional and Thematic data



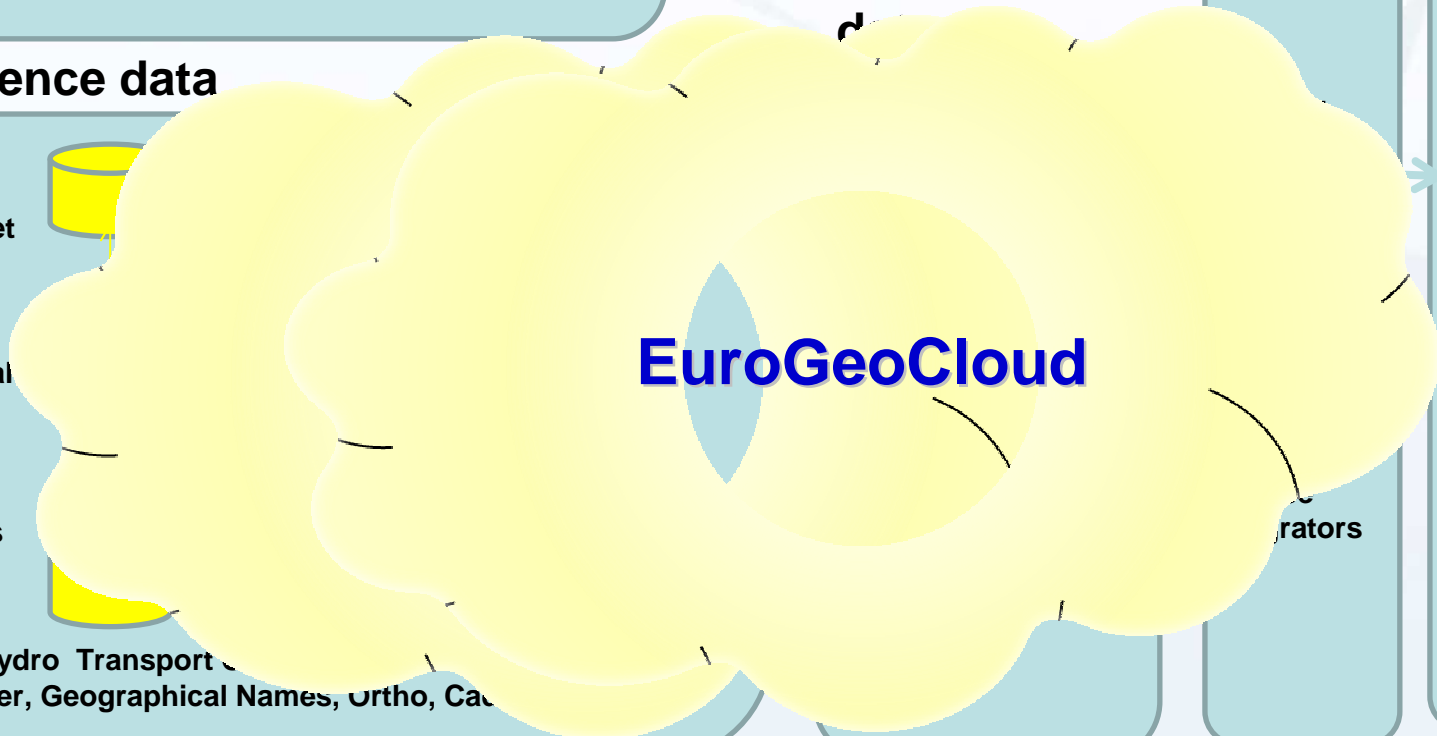
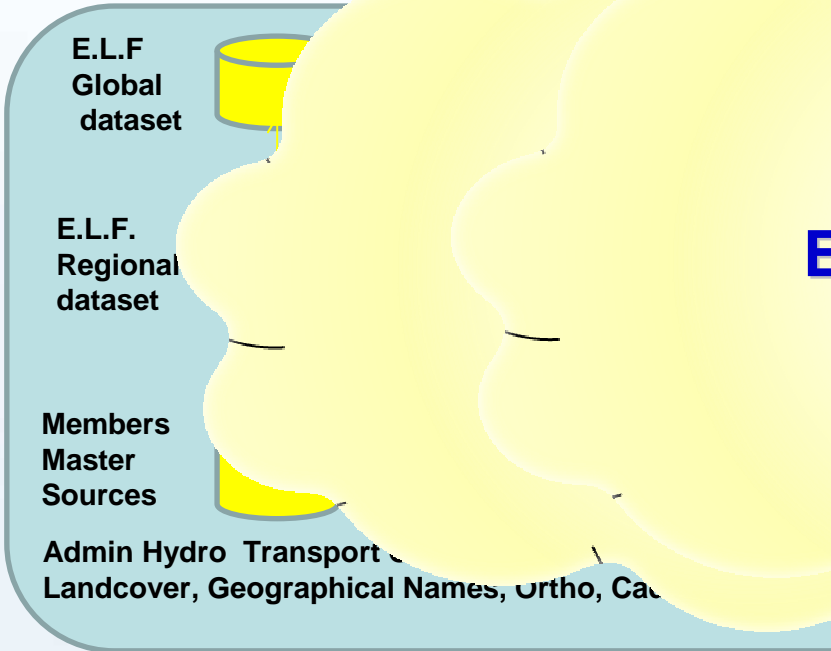
Service Integration

Applications



Reference

Reference data



Operators



National spatial data infrastructures

National products and services

Pan-European products and services

Contact

Welcome to EuroGeoInfo

Your source of official European mapping information

From roads to rivers, property ownership to land use, Europe's National Mapping and Cadastral Agencies collect and maintain a wealth of geographical information.

EuroGeoInfo is here to inform you about and help you obtain both pan-European geographic reference data and detailed geographic information from across Europe.

This map viewer demonstrates the content and coverage of the products of EuroGeographics, the Association of National Mapping and Cadastral Agencies of Europe. The current service contains data from EuroGlobalMap (v4.0), EuroRegionalMap (v3.2) and EuroBoundaryMap (v5.0). Details of the data used in this service can be found in [this document](#). Terms and conditions of use are available [here](#).



National Spatial Data Infrastructures



National products and services



Pan-European products and services





National spatial data infrastructures

National products and services

Pan-European products and services

Contact

Welcome to EuroGeoInfo

Your source of official European mapping information

From roads to rivers, property ownership to land use, Europe's National Mapping and Cadastral Agencies collect and maintain a wealth of geographical information.

EuroGeoInfo is here to inform you about and help you obtain both pan-European geographic reference data and detailed geographic information from across Europe.

This map viewer demonstrates the content and coverage of the products of EuroGeographics, the Association of National Mapping and Cadastral Agencies of Europe. The current service contains data from EuroGlobalMap (v4.0), EuroRegionalMap (v3.2) and EuroBoundaryMap (v5.0). Details of the data used in this service can be found in [this document](#). Terms and conditions of use are available [here](#).



National Spatial Data Infrastructures



National products and services



Pan-European products and services



ESDIN - one step closer to a European Location Framework



National spatial data infrastructures

National products and services

Pan-European products and services

Contact

National spatial data infrastructures

Roll over the map to reveal the countries and click to see more details in this panel.

Lithuania

NSDI



ESDIN - one step closer to a European Location Framework



National spatial data infrastructures

National products and services

National products and services

Roll over the map to reveal the countries and click to see more details in this panel.

Switzerland

[Addresses](#)

[Aerial photographs](#)

[Cadastr](#)

[Distributors](#)

[Geodesy & GPS](#)

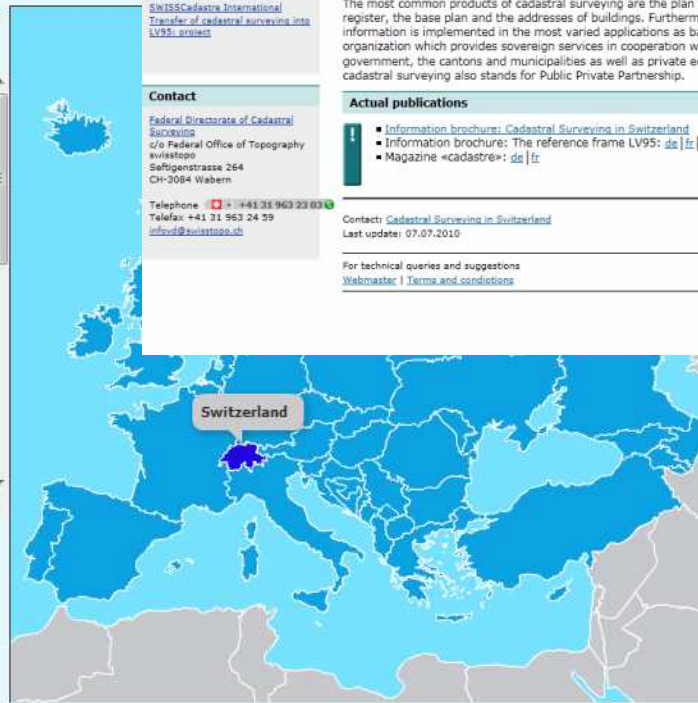
[Geoportal](#)

[Historical Maps](#)

[Land Cover](#)

[Land Information](#)

[Land Registration](#)



av.cadastre.ch
The Portal for Cadastral Surveying
Cadastral Surveying in Switzerland

www.cadastre.ch | Homepage CS | Sitemap | Deutsch | Français | Italiano

News | Addresses and links | Topics | Products | Cadastral surveyors | Documentation

Access to ...
Associations
Cadastral surveyors
Cadastral surveying basis plan
Cadastral survey subscription service
Cadastral Data Modeling and Data Exchange
Diagnosis of cadastral surveying
GABNO: addresses of buildings
project
Topographic names
History
INTERLIS 2
Legal Basis
Magazine «cadastre»
Publications
Third dimension 3D
Standards
SWISSCadastr International
Transfer of cadastral surveying into LV95: project

Contact
Federal Directorate of Cadastral Surveying
c/o Federal Office of Topography
swisstopo
Seltigenstrasse 264
CH-3084 Wabern
Telephone: +41 26 969 23 00
Telefax: +41 21 963 24 59
info@swisstopo.ch

Homepage
Print this page

The Cadastral Surveying in Switzerland

The most common products of cadastral surveying are the plan for the land register, the base plan and the addresses of buildings. Furthermore, cadastral information is implemented in the most varied applications as basis data. As an organization which provides sovereign services in cooperation with the federal government, the cantons and municipalities as well as private economy, cadastral surveying also stands for Public Private Partnership.

Actual publications
Information brochure: Cadastral Surveying in Switzerland
Information brochure: The reference frame LV95: de | fr | it
Magazine «cadastre»: de | fr

Contact: Cadastral Surveying in Switzerland
Last update: 07.07.2010

For technical queries and suggestions
Webmaster | Terms and conditions

Search in cadastre.ch
Advanced search

Information for citizens
Cadastral surveying a brief guide
Purpose
Multi-purpose data
Organization
History
Information brochure

GeoMeta: Cadastral Surveying in your community

Register of Licensed Land Surveyors
Persons registered: de | fr | it

Homepage ...
Portal for Public-law Resolutions

Strategic Partnerships



Established MOUs



WPLA

Working towards MOUs



Memberships



European Committee for Standardization
Comité Européen de Normalisation
Europäisches Komitee für Normung



ISO/TC 211
Geographic information/Geomatics

Other relationships

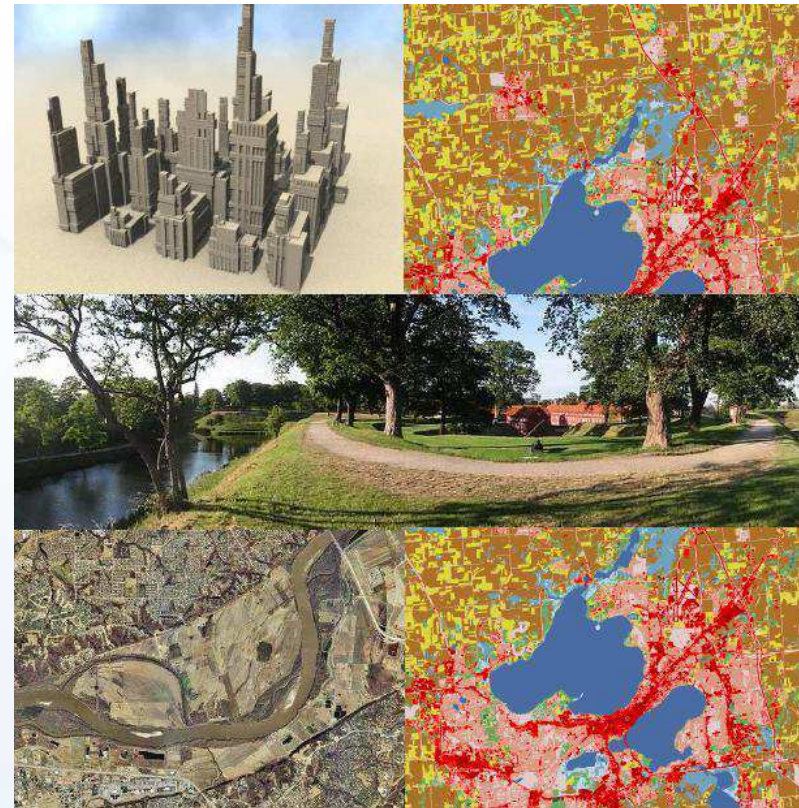


Active cooperation with partners and projects

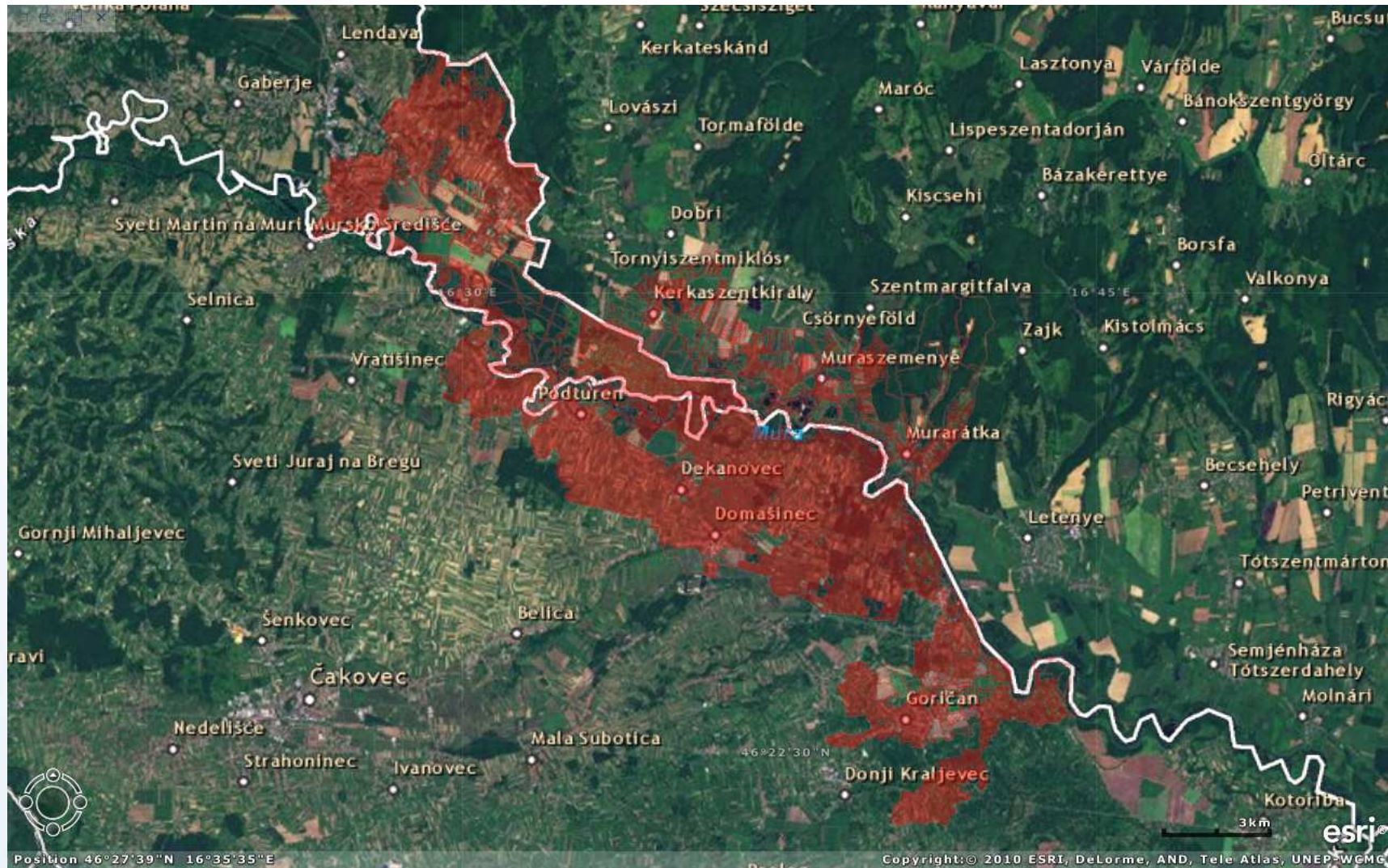
- European Requirements for Cadastral Surveyor activities – with CLGE
- Impact of EU legislation on the cadastral surveyors – with CLGE
- The role of the Cadastral Parcel in INSPIRE – with the PCC
- Cadastre INSPIREd! - with the PCC
- Cadastral Parcel project - with PSMA Australia
- Survey on Cadastral services - with JRC
- Survey on using reference systems - with EUREF
- Cadastre and Land Registries – Information Report v1 & v2
- A new Vision for Cadastre – with PCC, Eulis, ELRA

Cadastral iNSPIREd!

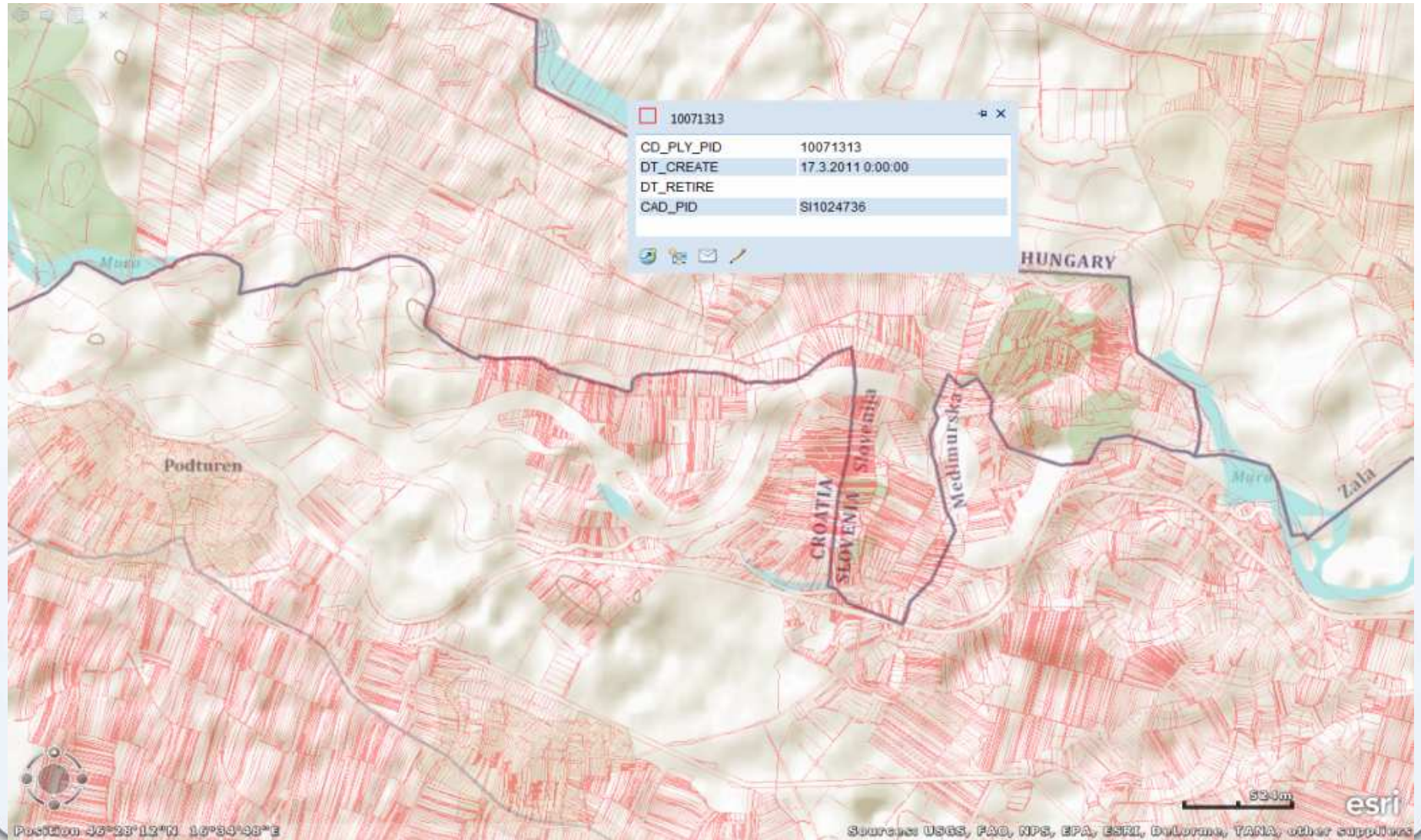
The benefits of
Cadastral Information
for themes in INSPIRE
Annexes II and III Joint
PCC &
EuroGeographics KEN.
Report published in May
2011 available on our
web site.



Pilot Cadastral Parcel Index Project



Pilot Cadastral Parcel Index Project



Proposal for EuroGeographics & PCC working together as one

- A physical presence in Brussels;
- Enhanced profile for cadastral issues;
- A stronger voice for cadastre in Europe;
- Strong and active representation in EU policy circles (Council, Commission and Parliament);;
- Clearer representation of cadastral issues;
- Sharing of cadastre related information and experience;
- Common studies (e.g. Cadastre Inspired);
- Project proposals, project deliverables;
- Pan-European products – a cadastral index for Europe

Together we are stronger



Thank you!