



The Second Assessment of Transboundary Rivers, Lakes and Groundwaters : Maps and graphics

Annukka Lipponen

Environmental Affairs Officer, UNECE
Coordinator of the Second Assessment



About the approach

- More content presented in the form of maps and graphs (expressive, adds to the effect of communication)
- Figures provided by the countries used; if gaps remain in information necessary graphs > filled from selected datasets (LandScan, GlobCover, GRDC database)

Types of maps and graphics

1. Overview maps showing the transboundary waters (European & Asia part)
2. Maps of transboundary aquifers/GWBs
3. Summary graphics by recipient sea (flow, monthly discharges etc)
4. Basin maps and accompanying graphics
5. Individual figures
6. Executive summary maps

Overview maps: European & Asian



Transboundary Aquifers of Central Asia A

- Update September 2010 -



Legend

Transboundary Aquifers

- aquifer extent
- confirmed boundary
- approximate boundary

Geographical elements

- political border
- lakes
- rivers
- cities

Base maps

Geographic features: ESRI data and maps (2006)
Elevation: SRTM and GTOPO30 provided by ESRI (2006)

Map projection

Robinson projection, geographic coordinates,
spheroid WGS84, longitude of central meridian 0°

Cartographic editing GIS

C.M. van Kempen

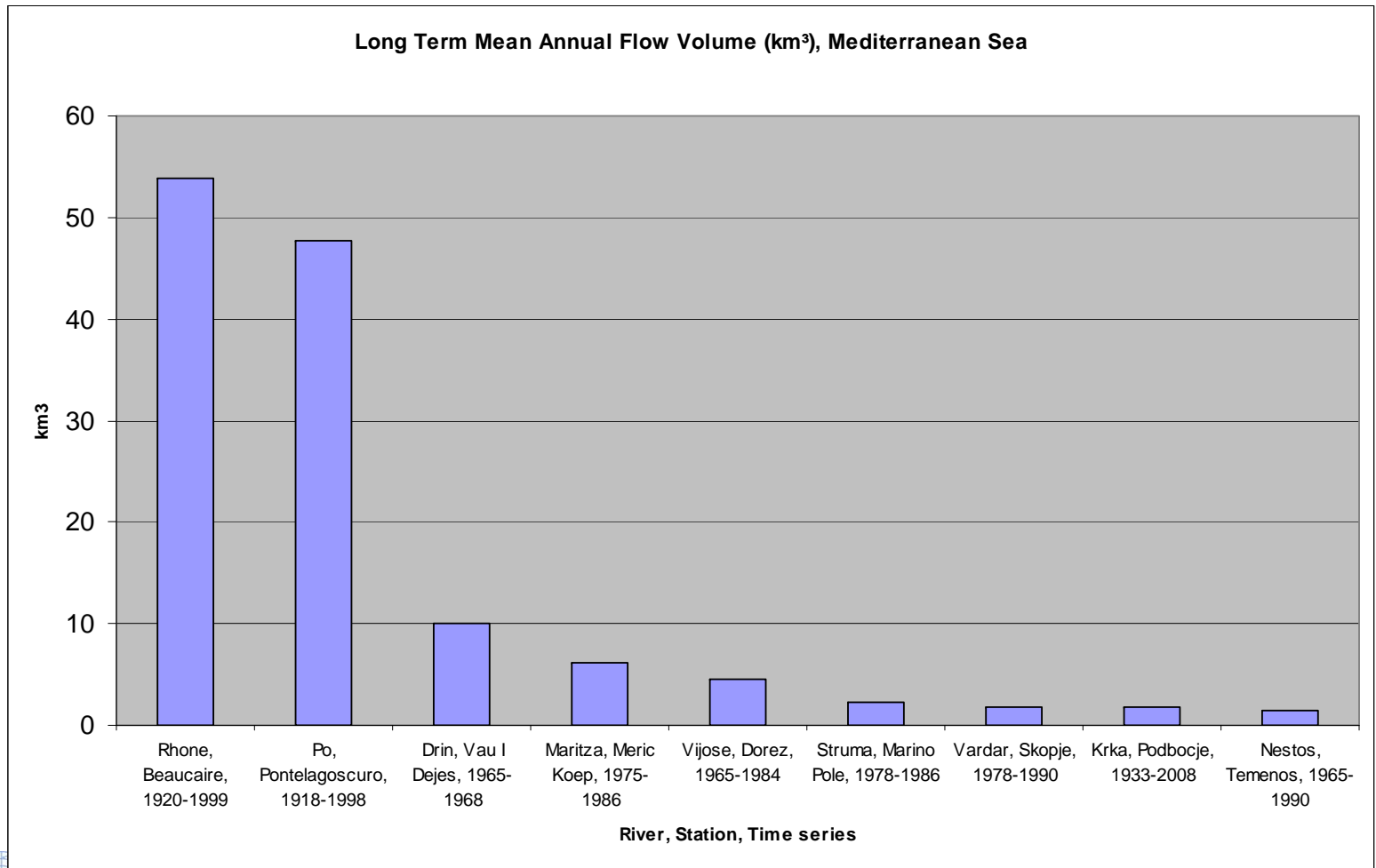
© IGRAC, 2010

IGRAC works under auspices of UNESCO and WMO,
is hosted by DELTARES and funded by the government
of the Netherlands through Partners for Water.

www.igrac.net
info@igrac.net

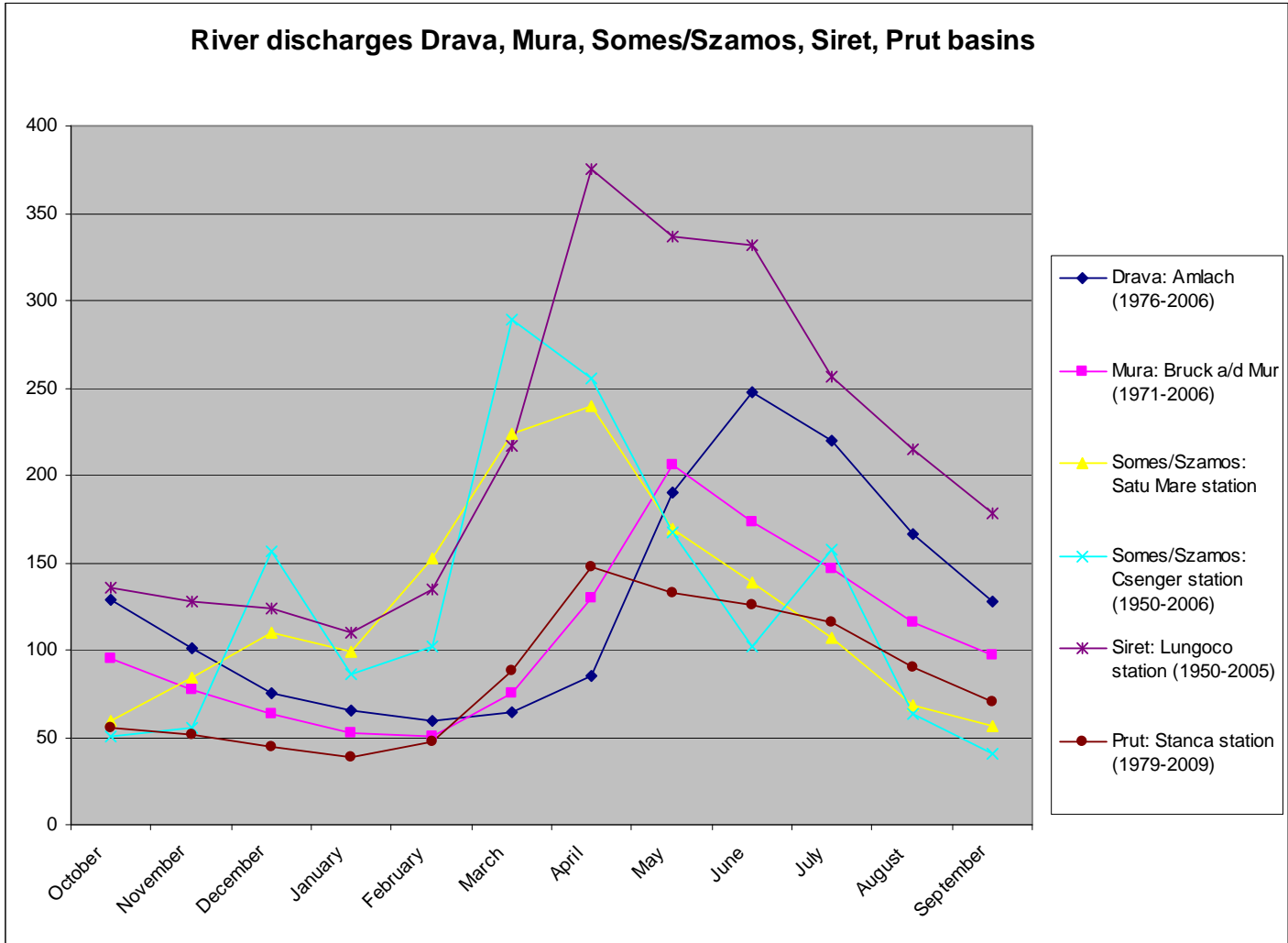
P.O. Box 85467
3500 AL Utrecht
the Netherlands

Long-term mean annual flow





River discharges Drava, Mura, Somes/Szamos, Siret, Prut basins



Graphics accompanying basin maps

- Percentage shares of landuse/land cover classes (based on figures reported by countries when possible, otherwise GlobCover)
- Population by country in each basin: in the case of gaps, output from the LandScan model to be used
- Discharges: maximum, average and minimum

Prototype basin map: featuring the Sava as example



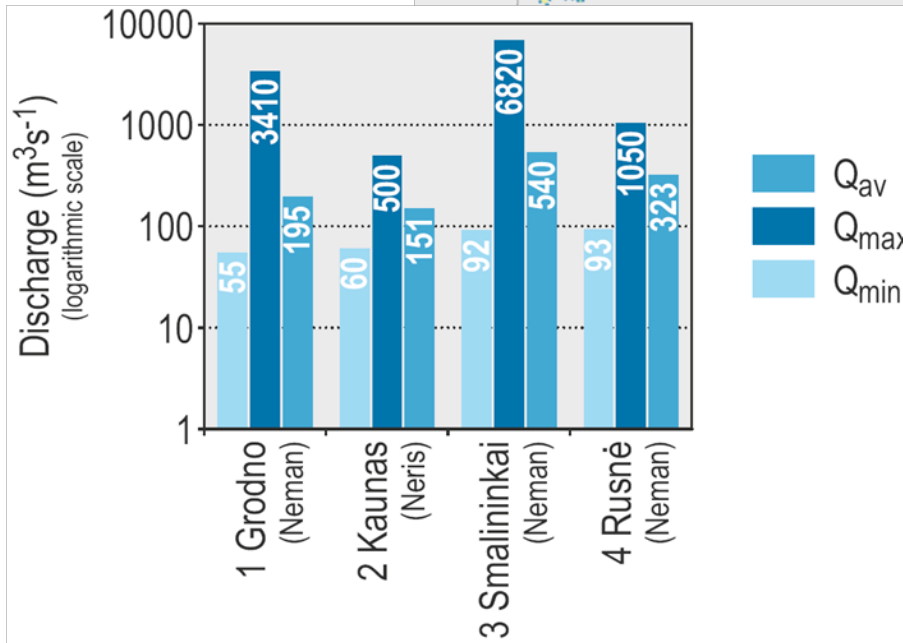
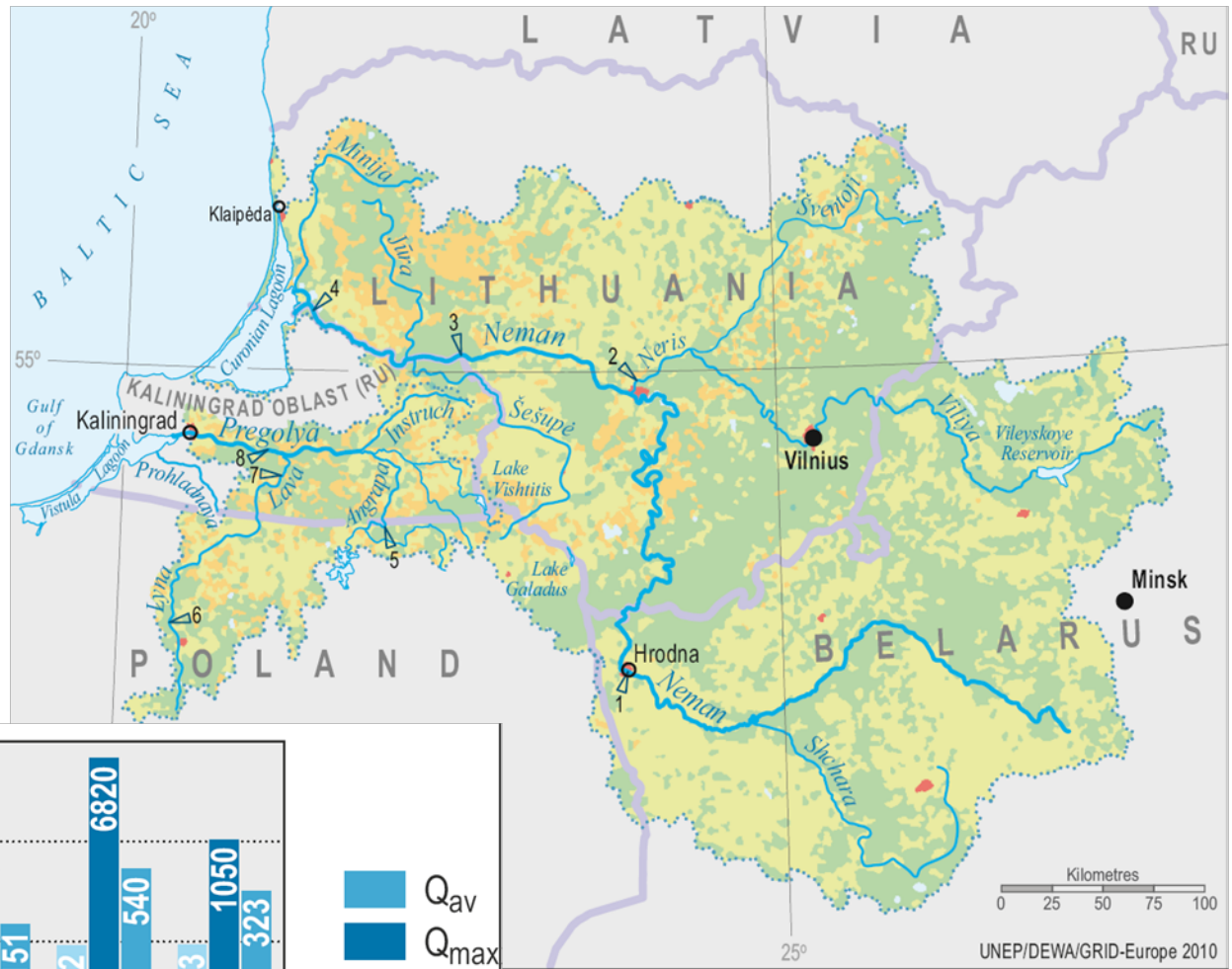
Gauging stations to link to discharges

Background map as in the 1st Assessment



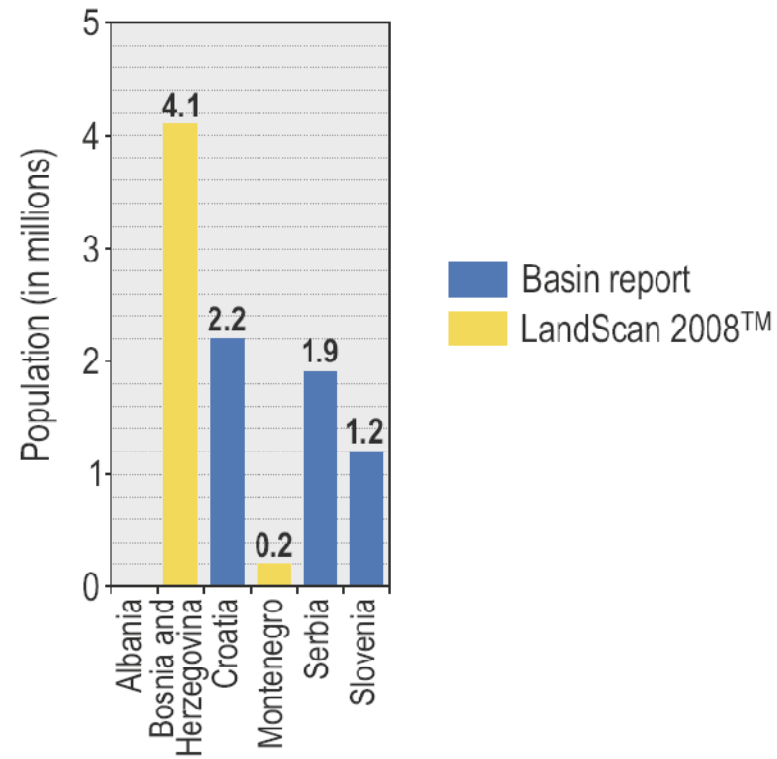
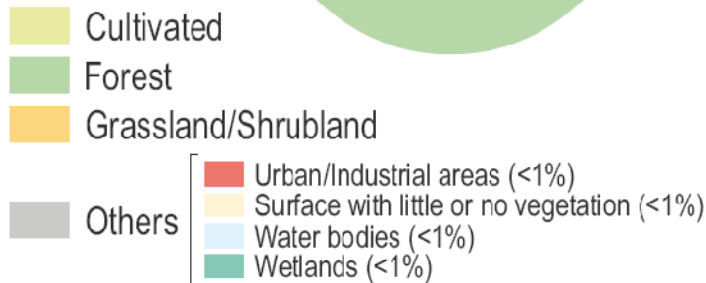
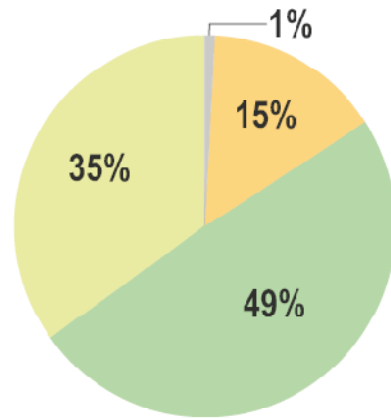
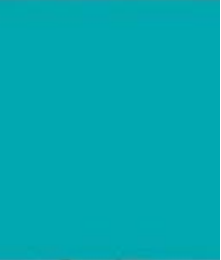


Neman



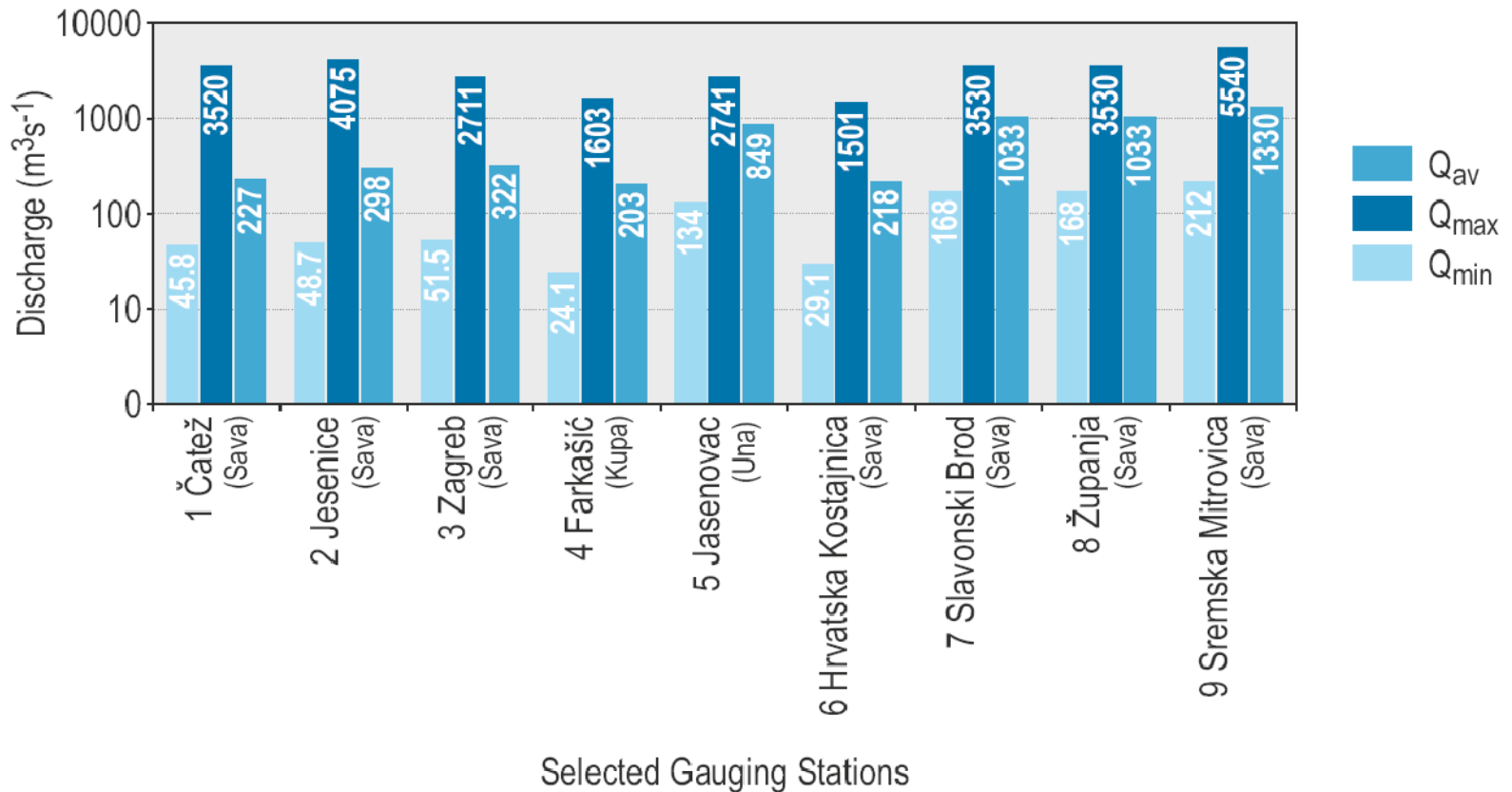
Graphs accompanying the basin maps

Landuse/land cover and population

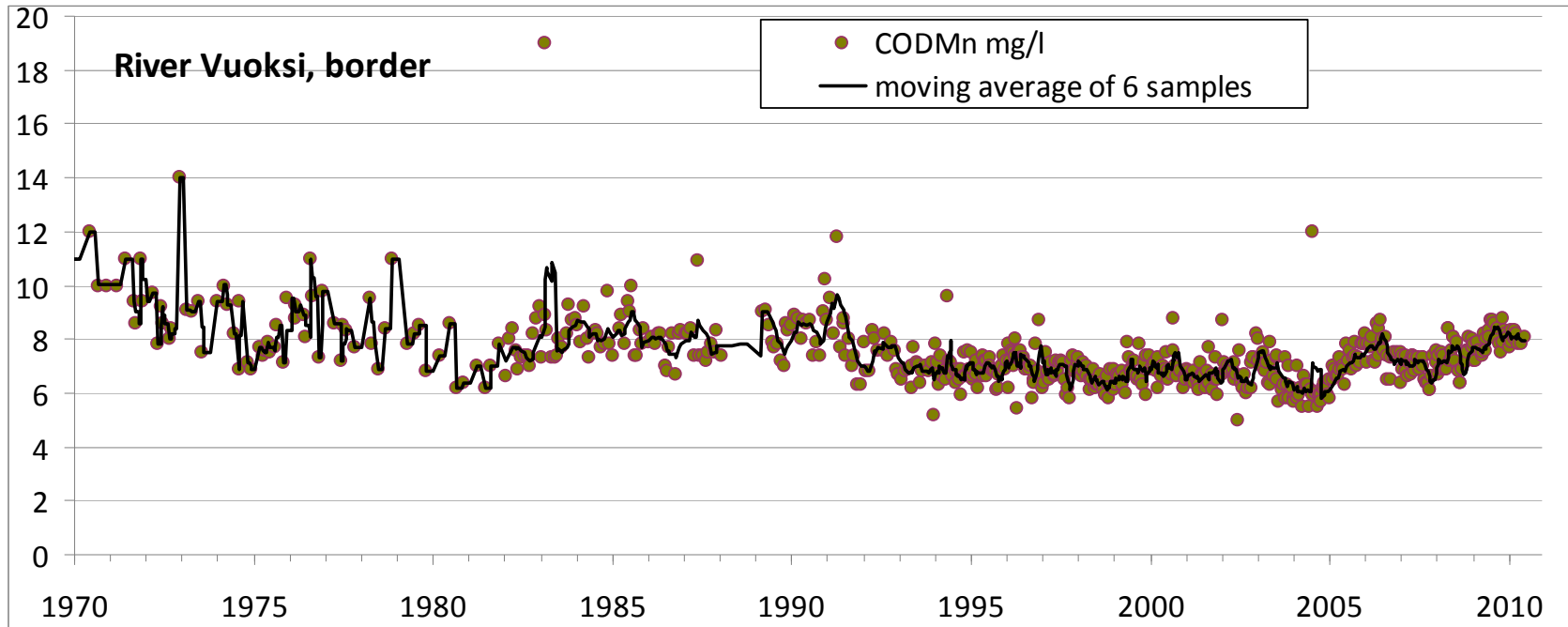
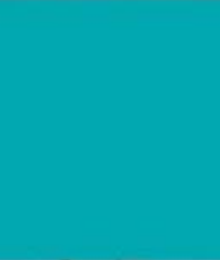


Graphs accompanying the basin maps (2)

Discharges: average, minimum and maximum



Individual graphics: Water quality in Vuoksi



Transboundary cooperation in the Caucasus and Central Asia

