



# FFEM-EECCA project

## Capacity building in data administration for assessing transboundary water resources in the EECCA

### Project presentation

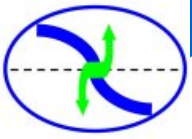
April./2011



**Boris MINARIK**  
International Water Assessment Center  
SLOVAKIA

**Paul HAENER**  
International Office for Water  
FRANCE

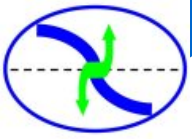




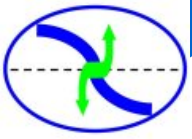
# Table of content

---

- Characteristics of the project
- Focus on the diagnostic phase
- Example of final expected outputs



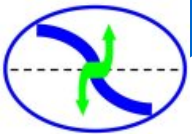
# Characteristics of the FFEM-EECCA project



# General context

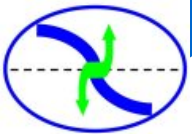
- Efficient IWRM requires to have access to the information necessary to better guide water resource management decision making
- In each transboundary basin and in each country, the data necessary to elaborate the requested information is produced/managed by various organisations
- Information generally in a fragmented, incomplete dispersed and heterogeneous way, either at international or national level
- Each level of decision in water management (national, local, regional) and each actor need different kind of information for decision making

**=> need efforts to rationalize and make this information readable, easily accessible and available in order to produce useful information**

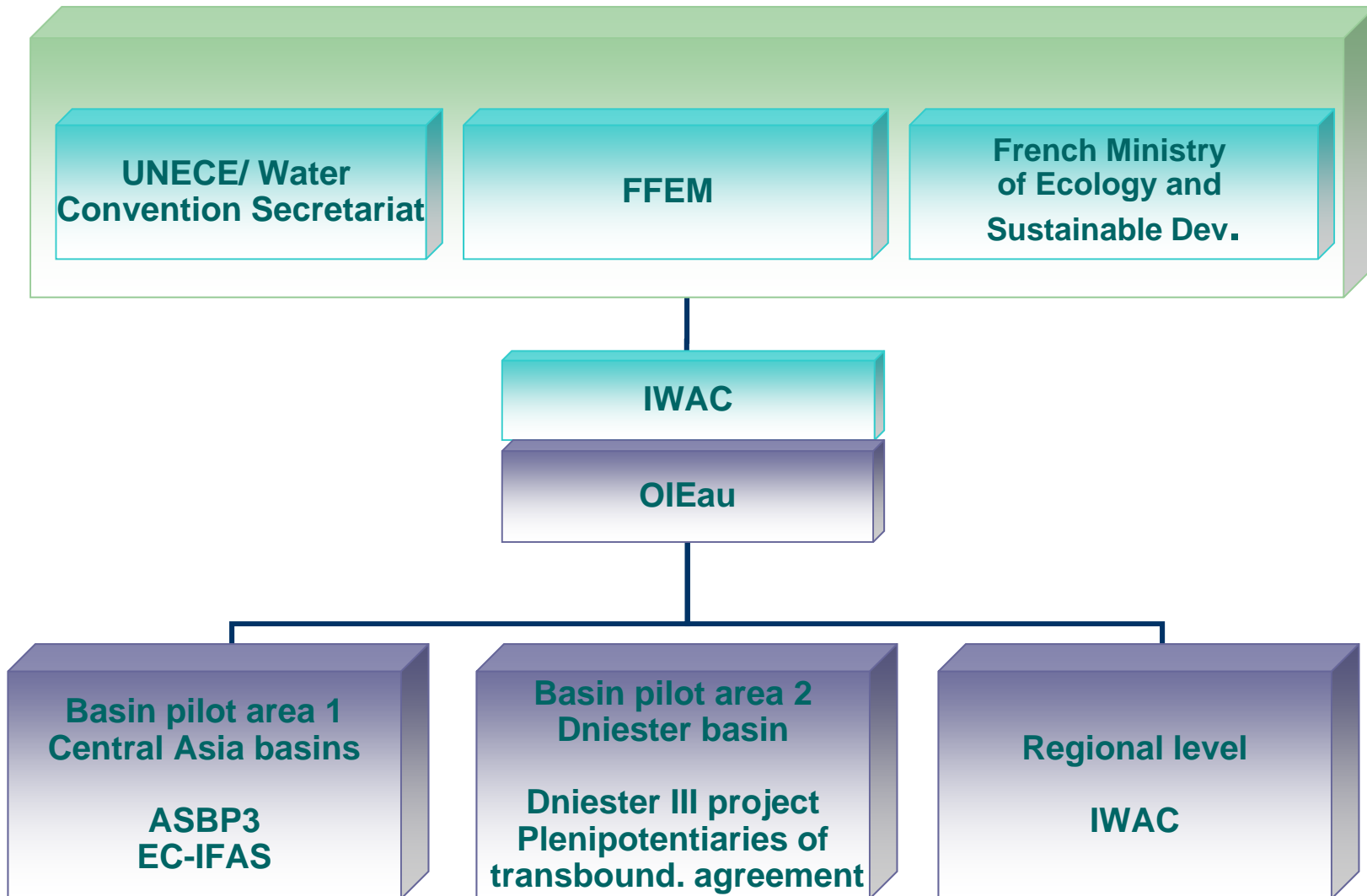


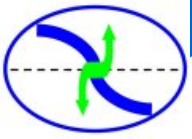
# UNECE-FFEM project characteristics

- **Title:** “Capacity building in data administration for assessing transboundary water resources in the countries of Eastern Europe, the Caucasus and Central Asia (EECCA)”
- Developed in collaboration with the secretariat of the “*Convention on the Protection and Use of Transboundary Watercourses and International Lakes*”/ UNECE
- **Location: 2 levels of implementation**
  - Transboundary basins
    - Dniester basin
    - Aral sea basins
  - Regional (EECCA countries)
- **Global project management**
  - **Steering :** FFEM/ French Ministry of Ecology/ Secretariat of the water convention/ IWAC
  - **Mandated beneficiary:** HIS/IWAC
  - **Prime contractor:** IOWater
- **Planned duration: 18 months** (Nov. 2010 to April 2012)
  - Nov 2010 = signature of contracts



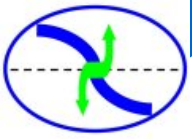
# FFEM Project governance





# FFEM project global objective

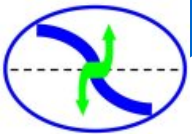
- **On the 2 transboundary pilot areas:**
  - to support development of capacities in data administration and data exchanges within the main national and regional concerned authorities to develop the production of information necessary to better guide water resource management decision making
  
- **At regional level**
  - to develop **regional tools** aiming to facilitate identification of the available information
  - to **disseminate the results** and experience feedbacks obtained in the 2 pilot areas, to the other transboundary river basin area and to the other EECCA countries in order to help them develop their own information systems.



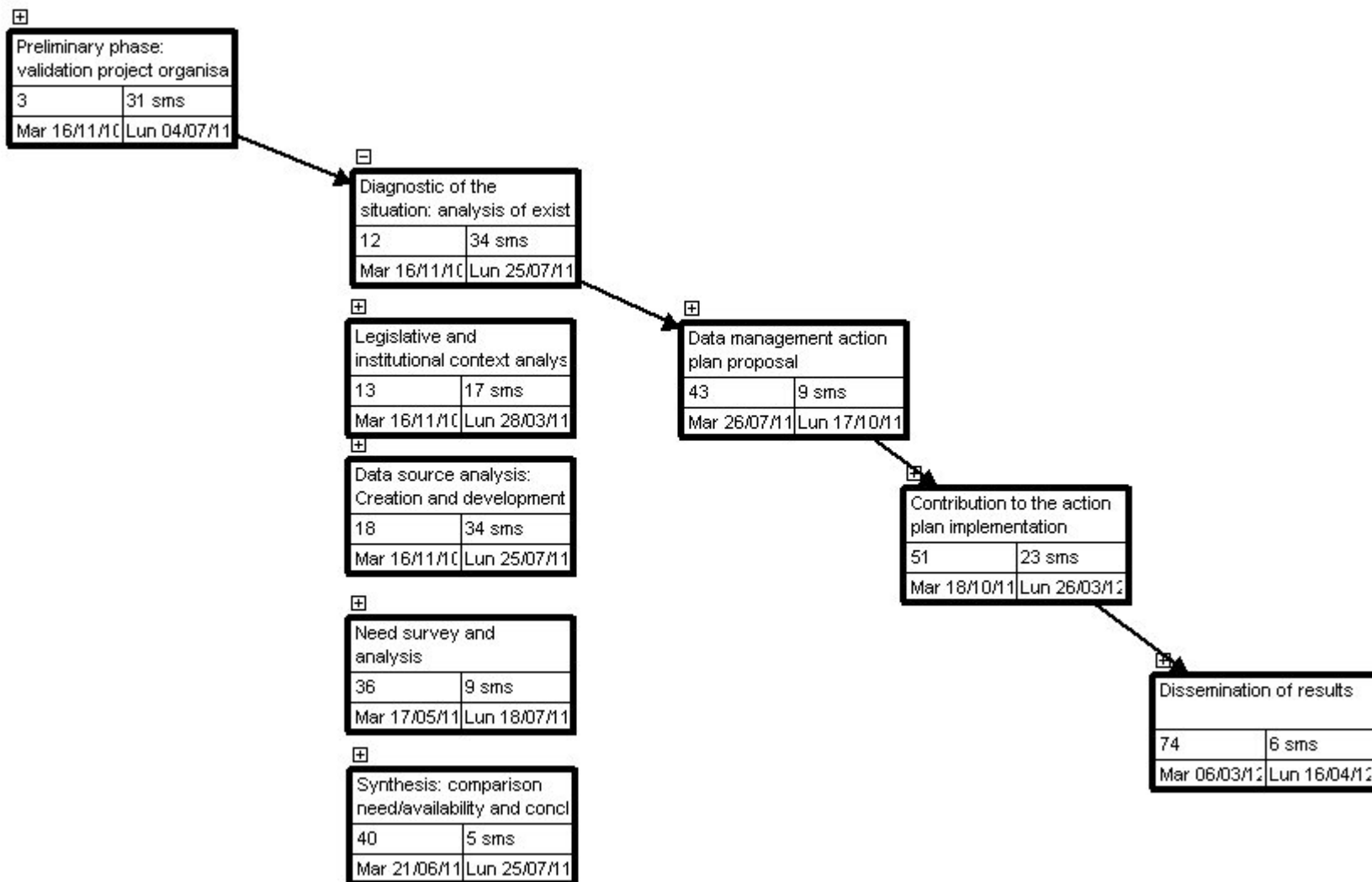
# Main activities of the project

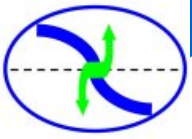
- **Component 1: Simultaneous actions on the 2 transboundary areas**
  - Preliminary phase: validation of project global organisation
  - **Diagnostic of the situation:** picture and analysis of existing situation
    - Potential stakeholders inventory
    - On line catalogue of data sources
    - Data flow diagrams per topics
    - Analysis of data/information needs
  - **Transboundary basin data management action plan proposal**
  - **Contribution to the action plan implementation**
  - Dissemination of results
  
- **Component 2: Actions undertaken at regional level**
  - Creation of a regional catalogue of data sources hosted by IWAC
  - Production/management of communication tools (leaflet, website, news letters..)
  - Production of guidance to support transboundary data management
  - Participation to regional meetings





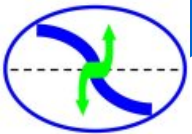
# Project action plan at basin level





# Focus on the diagnostic phase (starting activities)





# On line database of actors and project partners

## ■ Example of list of actors in Ukraine

About FFEM-EECCA project

English (United Kingdom) Russian (CIS)

Home

**Main project components**

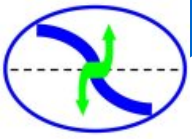
- Aral sea basins
- Dniester Basin
- EECCA regional level

**Information per country**

- Moldova
- Ukraine
  - [UA actors & project partners](#)
  - [UA data sources](#)
- Afghanistan
- Kazakhstan
- Kyrgyzstan
- Tajikistan
- Turkmenistan
- Uzbekistan

**Actors and project partners in Ukraine**

Country code	Name of Organisation	Acronym	Tel.	Website	tt_orgaacti Code Activity
UA	Ministry of Agriculture and Food of Ukraine	MoAF		<a href="http://www.minagro.kiev.ua/?lng=E">http://www.minagro.kiev.ua/?lng=E</a>	2000
UA	Ministry of emergencies of Ukraine	MoE	00 380442473211	<a href="http://www.mns.gov.ua">www.mns.gov.ua</a>	2000
UA	Ministry of Energy and Coal Industry of Ukraine	MECI	(044) 234-93-89	<a href="http://mpe.kmu.gov.ua/fuel/control/uk/index">http://mpe.kmu.gov.ua/fuel/control/uk/index</a>	2000
UA	Ministry of Environment and Natural Resources of Ukraine	MENR	00 380 44 206 33 02	<a href="http://www.menr.gov.ua">www.menr.gov.ua</a>	2000
UA	Ministry of Health of Ukraine	MoH	(044)226-22-05,	<a href="http://www.moz.gov.ua">www.moz.gov.ua</a>	2000
UA	OSCE Organization for Security and Co-operation in Europe	OSCE	+38 44 492 0382	<a href="http://www.osce.org/ukraine">http://www.osce.org/ukraine</a>	2000
UA	State Agency of Ukraine Fisheries	SAoF			2000
UA	State Agency of Ukraine Water Resources	SAUWR	(044) 226-26-07	<a href="http://www.scwm.gov.ua/">http://www.scwm.gov.ua/</a>	2000
UA	State Environmental Inspectorate of Ukraine	SEI	(0512) 47-36-05; 53-58-42	<a href="http://www.dei.mk.ua/index.php">http://www.dei.mk.ua/index.php</a>	2000



# Catalogue of data sources – web link

- Example of output when looking for GIS Layer on the Dniester basin

Abstract

Keywords

Map type

Search accuracy

Category

Geo-dataset (vector/raster)

WHERE?

lat (max) 50.00

lat (min) 46.00

Region

Dniestr basin

Search

Show map

WELCOME TO THE FFEM-UNECE PROJECT CATALOGUE OF DATA SOURCES

Aggregate Results matching search criteria : 1-2/2 (page 1/1), 0 selected

Select : all, none

actions on selection

Sort by Relevance

GIS LAYER OF THE HYDROLOGICAL NETWORK OF THE DNIESTER BASIN

Abstract: GIS layer of the hydrological network of the Dniester basin created by Phd Sirodoev from topo maps 1/100000

Keywords: HYE, Dniestr basin, Moldova, Ukraine

Metadata

GIS LAYER OF MOLDOVA DNIESTER SMALL RIVER BASINS

Abstract: GIS layer of Moldova Dniester small river basins more 10 km length. Created by Gh. Sirodoev. From topomap at scale 1:50 000

Keywords: HYE, Moldova

- Metadata indicates who manages what !

Тип карты

Точность поиска

Категория

Geo-dataset (vector/raster) in russian

ГДЕ?

Широта (max) 50.00

Долгота (min) 22.000

Широта (min) 46.00

Тип

перекрывается с

Область

Dniestr basin

КОГДА?

Поиск

Сбросить Простой поиск

В пределах Настройки

Show map

Идентификация информации

Название: ГИС слоя гидрологической сети в бассейне Днестра

Аннотация: ГИС слоя гидрологической сети в бассейне Днестра. Создано Phd Sirodoev от Топо карты 1 /

Точка контакта

Персональное имя: Phd Sirodoev Ghennadi

Адрес электронной почты: sirodoev\_g@rambler.ru

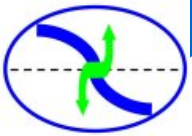
Название организации: Institute of Ecology and Geography

Описательные ключевые слова: HYE (theme).

Описательные ключевые слова: Dniestr basin , Moldova , Ukraine (place).

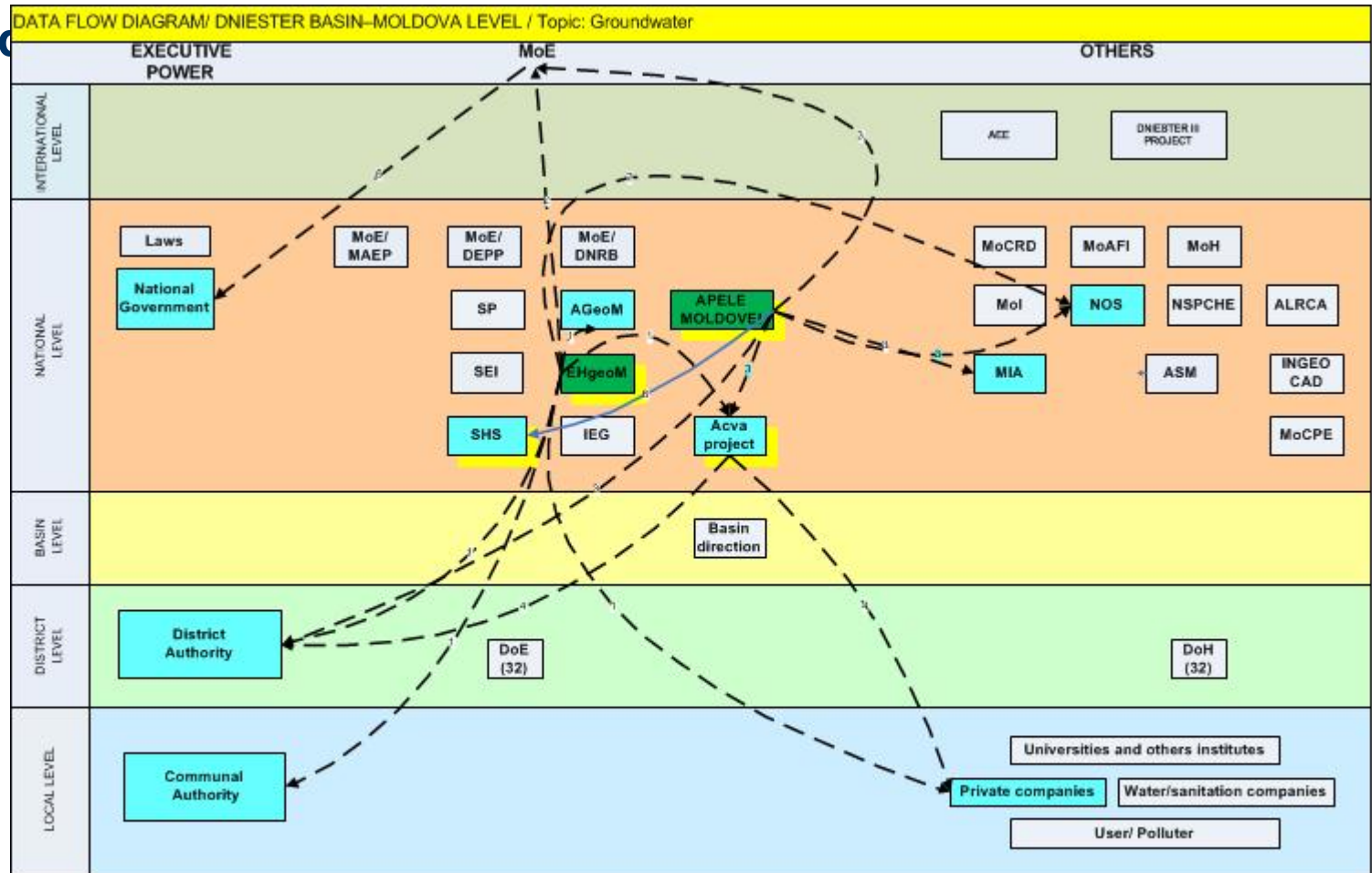
Ограничения доступа: права на интеллектуальную собственность: rights to financial benefit from and control of non-tangible property that is a result of creativity

Другие ограничения: Free access



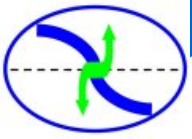
# Data flow diagram/ example

- Draft diagram presenting the main exchanges of **ground water**



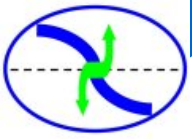
LEGEND: Digital data exchange (solid blue arrow) Paper data exchange (dashed black arrow)

Green box: Data producer Yellow box: Data management and data producer Cyan box: Final data user



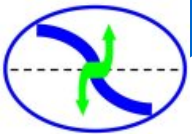
# Analysis of needs (to be launched in June 2011)

- **Identification of needs to facilitate the production of information necessary for activities and decision making**
  - **Target: the main regional, national and local water related authorities**
    - With first priority to the one participating to the analyse of existing situation
  - **Identification/analysis of needs in:**
    - **Data** (what complementary data?)
    - **Service** (what service? Ex map production, indicator production ...)
    - **Tools** (which software?)
    - **Equipment** (which hardware?)
    - **Training** (which training related to data processing? Ex database, GIS, web services development , modelling ....)
- **Methodology**
  - Survey (on line survey + targeted survey)
  - Expert analysis



# Examples of expected final outputs of the project





# Organising data exchanges (example)

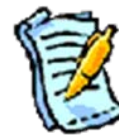
Initial data provider



Prod 1



Prod 2



Prod n

Metadata catalogue

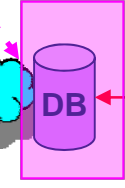
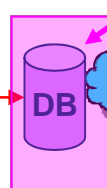


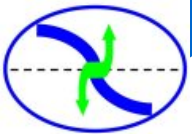
National Reference framework

Aggregation /exploitation  
e.g. national,  
basin,  
administrative  
unit level

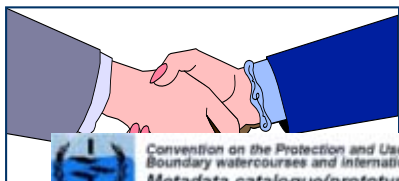
Manager 1

Manager n

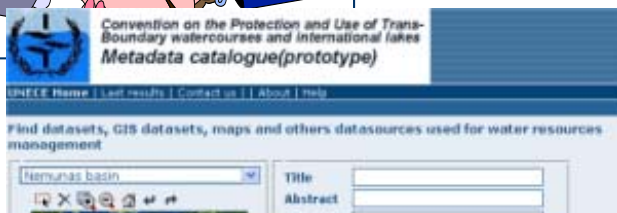




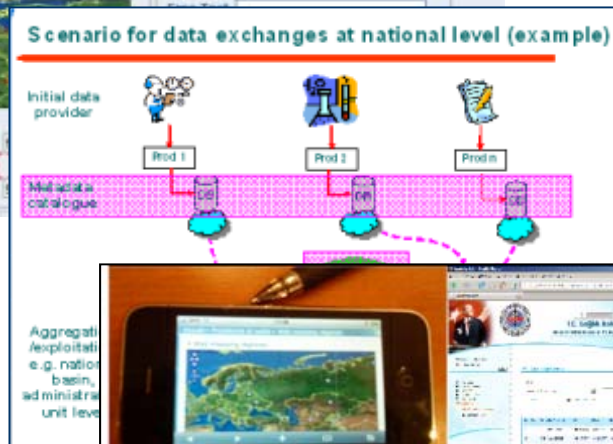
# Examples of final outputs at national and basin level



- Partner need analysis and agreements on action plan related to data management



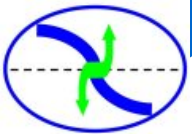
- On line catalogue of data sources (national and basin level)



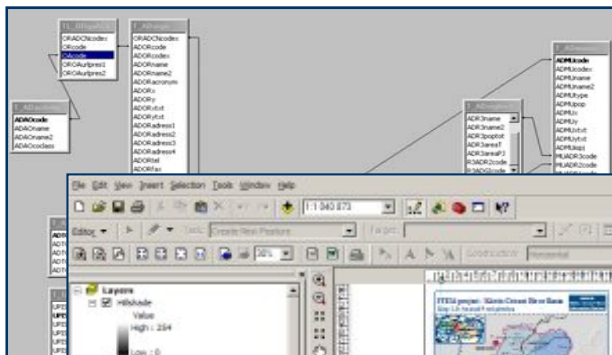
- Partners information system reinforced to develop new data exchange scenarios



- New tools to facilitate access to information for decision making

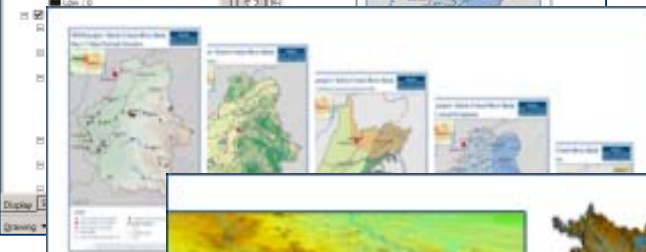


# Examples of potential services to reinforce the partner information systems and their interoperability

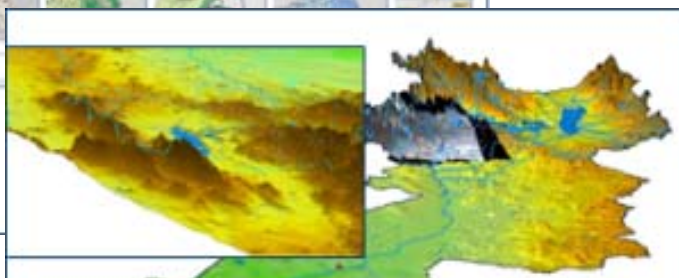


-Coherent database development  
(data models data dictionaries)

- Harmonized transboundary GIS



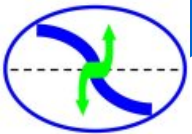
-Maps series production  
answering to the needs



-Specific processing  
such as satellite images  
and digital elevation  
model processing (3D)

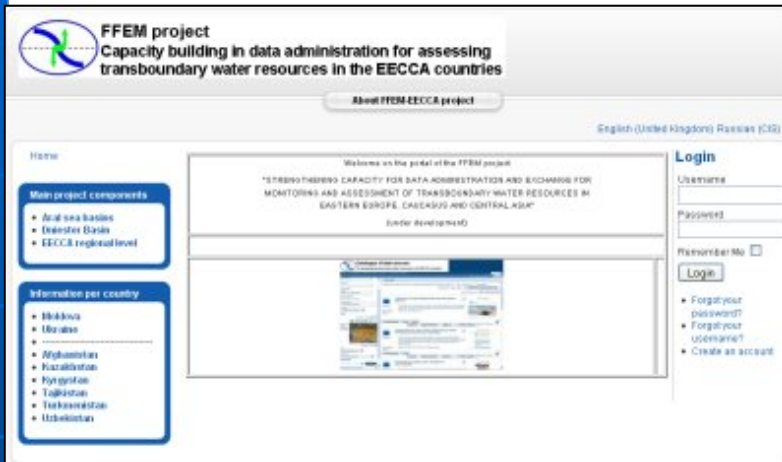


-On line mapping tools  
and Web services



# Example of expected outputs at regional level

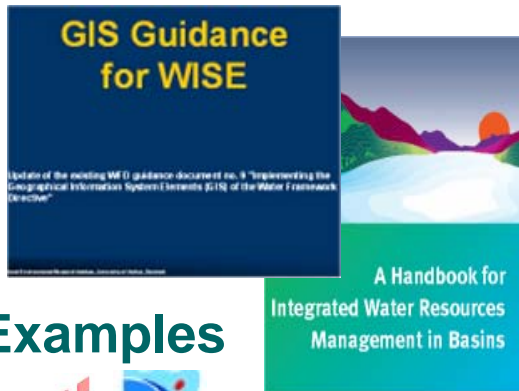
## Regional Web portal



## Regional catalogue of data sources



## Handbooks/guidances

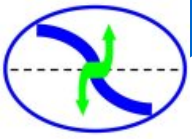


Examples

A Handbook for Integrated Water Resources Management in Basins

## Events for experience exchange

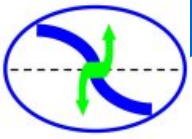




# Conclusions

---

- A starting project to reinforce cooperation between institutions in water data management
- Working first at national level, considering the important role of the data producers
- Supporting the development of collaborative tools and methods of national and regional interest
  - Catalogue of data sources and data flow analysis
  - Analysis of needs
  - Actions plans definition
- Supporting the development of priority actions



**Thank you  
for your attention**

**For more information**

**[http://www.aquacoope.org/ffem\\_ecca](http://www.aquacoope.org/ffem_ecca)**

