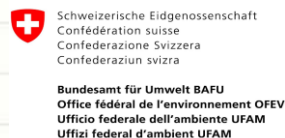


ADAPTATION OF THE MEUSE TO THE RISKS OF CLIMATE EVOLUTIONS) MARTIN (COMMUNICATION OFFICER)

Climate Changing ? Meuse Adapting !

Core group on pilot projects, the
Global Network of basins working on
adaptation, first meeting

Geneva, 20-21 February 2013



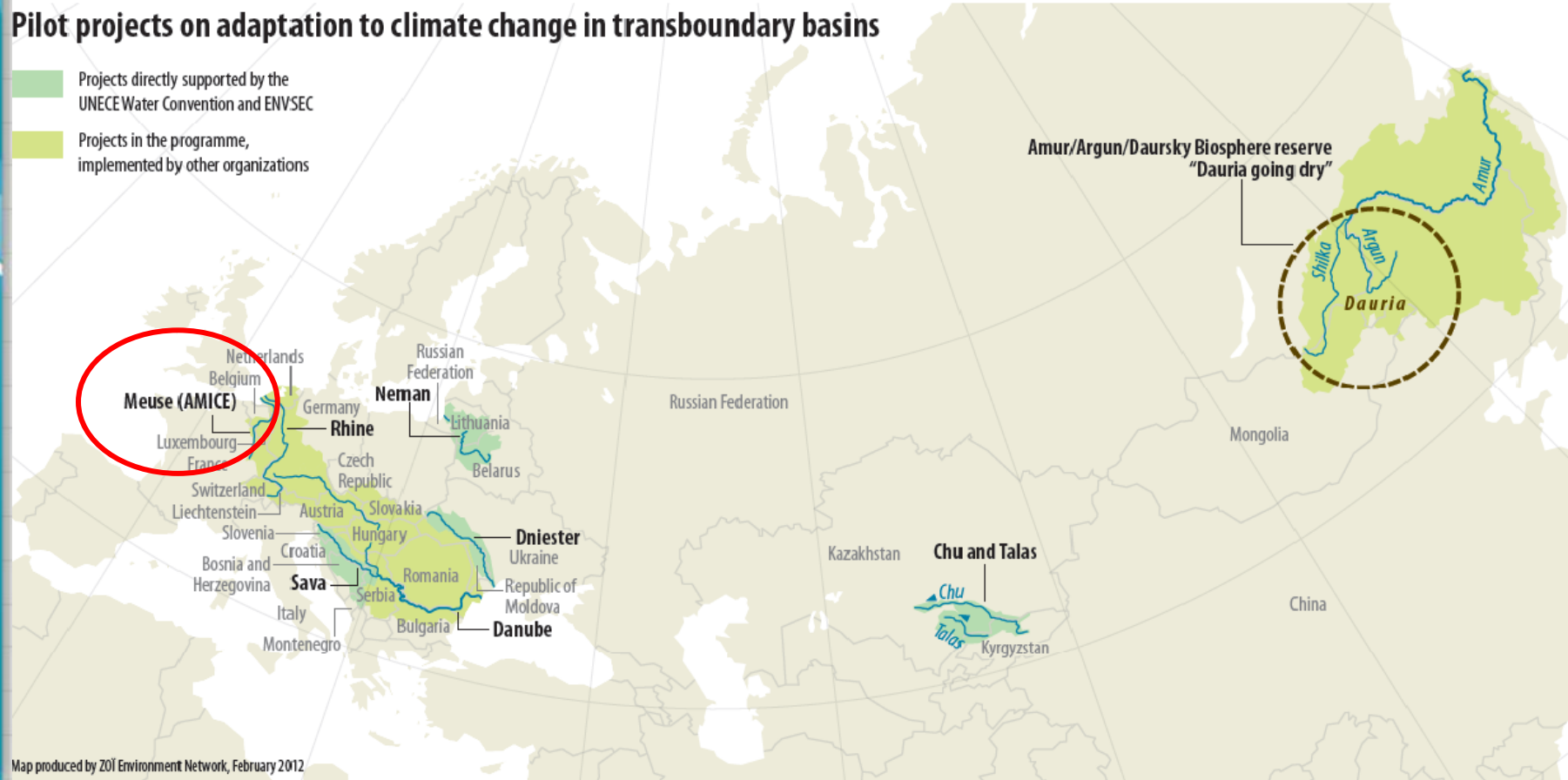
NAME OF THE PROJECT

GEOGRAPHICAL LOCATION

Show geographical location of the basin on the map

Pilot projects on adaptation to climate change in transboundary basins

- Projects directly supported by the UNECE Water Convention and ENVSEC
- Projects in the programme, implemented by other organizations

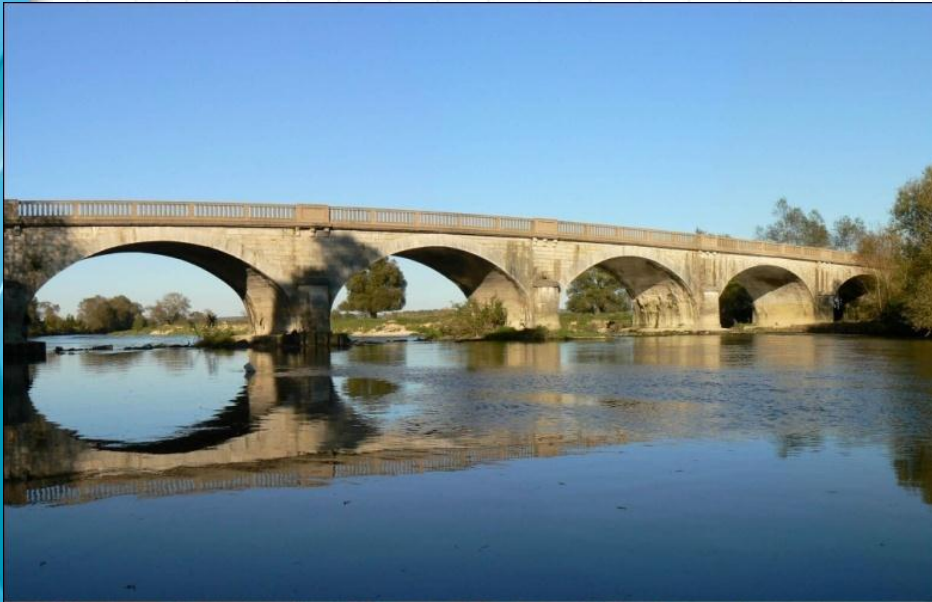




AMICE

**Is a dream
because**

**the Meuse is a
dream of a stream**



**When preparing AMICE
our 17 partners dreamt
of ...**



One climate scenario, one hydraulic model; one crisis management software, one common view on the management of the basin; better exchanges for a better management; getting to know each other, ...

NETHERLANDS

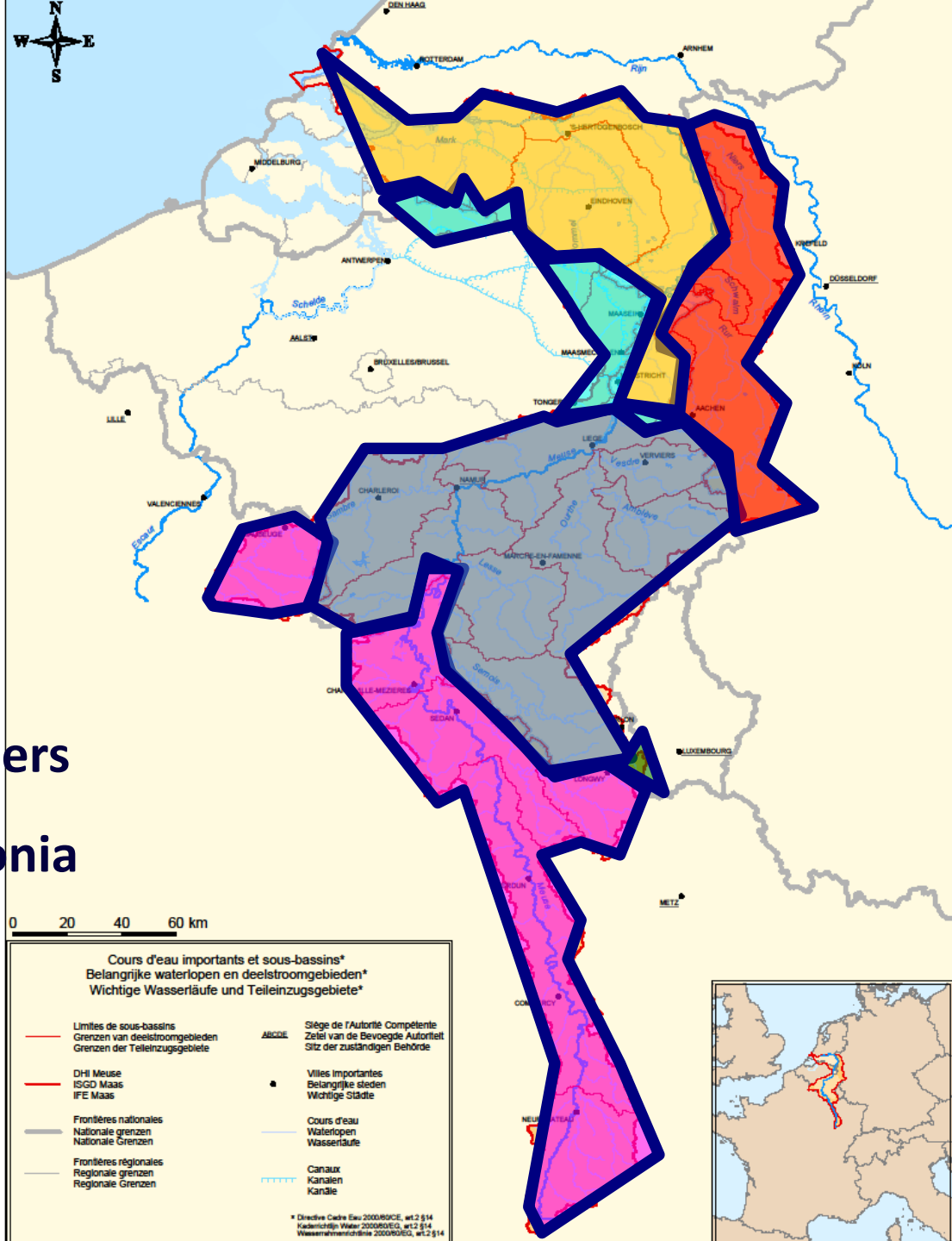
GERMANY

LUXEMBOURG

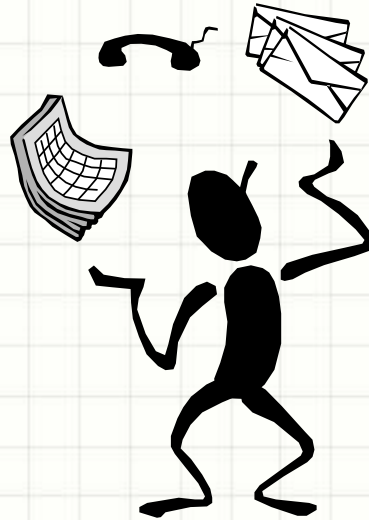
BELGIUM - Flanders

BELGIUM - Wallonia

FRANCE



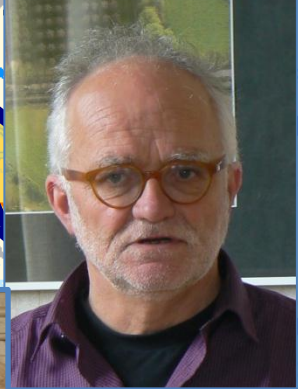
We had a nice challenge to meet

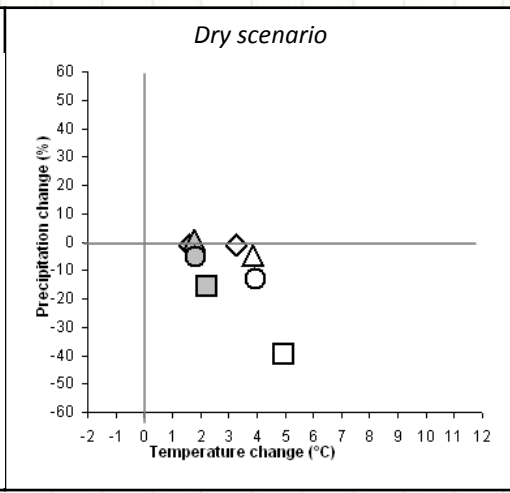
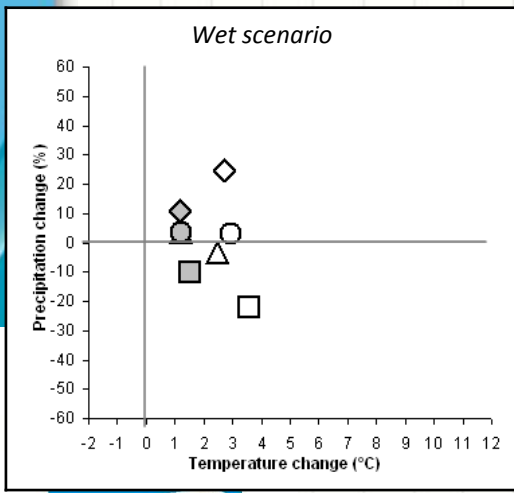


And lots of gaps to bridge



Ik begrijp het niet
Ich verstehe das nicht
Je ne comprends pas









And, yes, we did it! Last year already partners agreed that:

There was:

- ✦ an improved collaboration and cooperation;
- ✦ more interactivity;
- ✦ a better sharing of knowledge and responsibilities;
- ✦ a better understanding of the river and climate change

And that

- ✦ we knew each other and had fun together;
- ✦ results were obtained and goals met with;



And for now and forever, AMICE will
maintain
And our cooperation will always remain



AMICE FINAL CONFERENCE

Bridging Gaps!

March 13th-15th 2013



Sedan, FRANCE

LESSONS LEARNT

We learnt lots of lessons, far too many to sum up here! I just chose these 4:

- 1. Global threats ? Solidarity is the key !**
- 2. Problem with Uncertainties ? Flexible and win-win solutions !**
- 3. Worried by social acceptance ? Creativity and fun!**
- 4. No-regret action ? Work with nature !**

AMICE: Adaptation of the Meuse to the impacts of climate evolutions
Adapting by using nature's capacities

In the future, the Steenberge Dammer will be used for water storage during high flows. As a result the discharge of the Steenberge Vliet will be obstructed and this can lead to high water levels along the Steen and Beek. Within AMICE, two new areas are created as wetlands and for water storage. Visitors and local people can get accustomed with the project through an organized EP-visit.

Steenberge Vliet: more space for the river, recreation

A beautiful village, a river and its floodplain: Motton

Ambève: restoring natural 'sponges'

In the community of Motton, need is made of its own features: natural features near the beautiful village of Motton. The natural water storage capacity is enhanced through a series of small interventions. The French had a being rehabilitated lot, villages take an active part in this project.

The basic idea is that a healthy, natural vegetation is more resistant to the impacts of climate change than an artificial one. That's why the natural self-healing is being restored. The wetlands then created also function as "natural sponges": they retain some water in case of rain and release it gradually.

Two communities (France and the Netherlands) voluntarily called for "hard data": ecologists often lack

Climate Changing? Meuse Adapting!

Adaptation of the Meuse to the Impacts of Climate Evolutions

AMICE: Adaptation of the Meuse to the impacts of climate evolutions. AMICE is a project that aims to adapt the Meuse river basin to the impacts of climate change. The project focuses on three main areas: Steenberge Vliet, Motton, and Ambève. The project involves various stakeholders, including local communities, government agencies, and researchers. The project aims to improve the resilience of the Meuse river basin to climate change and to enhance the ecological and recreational value of the river.

AMICE: Adaptation of the Meuse to the impacts of climate evolutions
Adapting by improving existing infrastructures

Adapting sluices on the Zwan Canal: Saving water

's Hertogenbosch: feasible water storage

Run: Adaptation of a ecological sport system

AMICE: Adaptation of the Meuse to the impacts of climate evolutions

Topics on which you want to collaborate in the future



QUESTION TO THE OTHER PILOT PROJECTS?

The AMICE partnership consisted mostly (not only) of scientists and water managers. We set a first step towards an adaptation strategy. Which sectors would you invite to strengthen/broaden the partnership in order to develop a more complete strategy, for the whole of the basin? Please think about not self-evident sectors